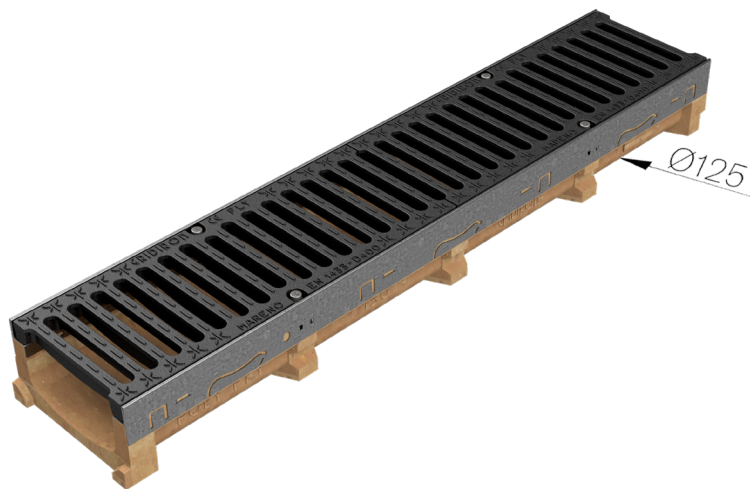
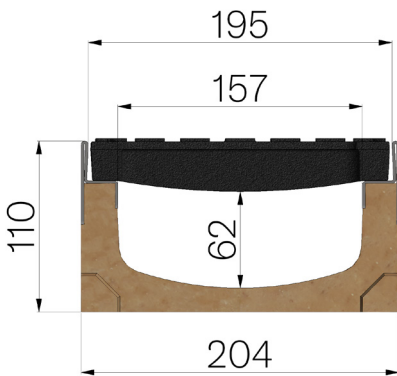


TECHNICAL SHEET



ASSEMBLED CODE	4G1CSGS
DESCRIPTION	Polymer concrete channel MOD. POLY FLY 150 LOW, with galvanized steel protective edge rails, c/w 2 x GJS500-7 ductile iron gratings, painted, installed and locked. Channel runoff section sqcm. 93. Load class D400 according to EN 1433:2008 Norm, if installed following manufacturer instructions.
PRODUCT LINE	Drainage channel type "M"
STANDARD	EN 1433:2008
LOADING CLASS	D400 - EN 1433:2008
INTENDED USE OR USES OF THE PRODUCT	Collection and channelling of surface water into areas subject to pedestrian and/or vehicle traffic according to the indicated flow rate.
DURABILITY	NPD
QUANTITY PER PACK	55
1) CHANNEL	4G1CS
MATERIAL	Polymer Concrete
SERIES TYPE	Polyfly series 150
SECTION TYPE	Low
PROFILE TYPE	Galvanized edge
VERSION TYPE	Normal without built-in slope
WATER FLOW LT / SEC	0,5%=7,3 - 1%=10,3 - 1,5%=12,6 - 2%=14,6 - 3%=17,9
2) GRID	4D12GS1
GRID TYPE	Ductile-iron Grid
MATERIAL	Ductile-Iron GJS500-7 : EN1563
SURFACE FINISH	Paint coating



Article dimensions mm	Inner width mm	Runoff section cmq	Bottom outlet mm	Weight Kg/each
1000 x 204 x H 110	157	93	Ø125	31,1