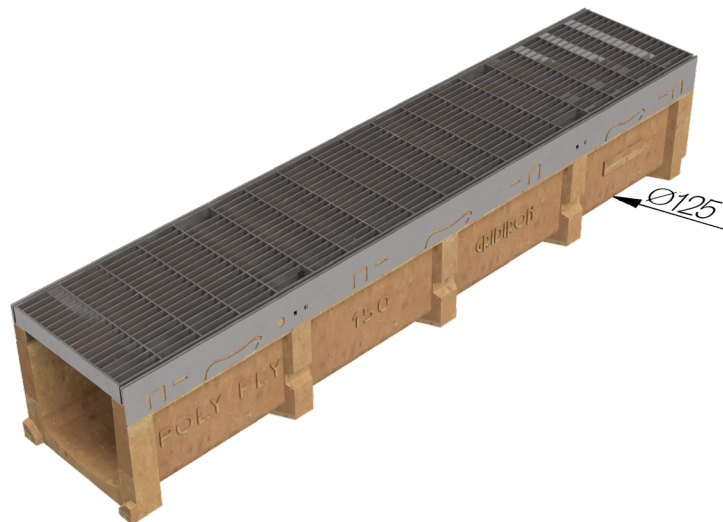
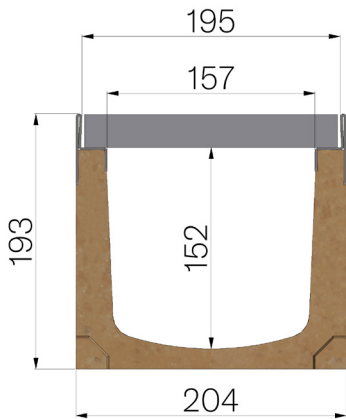


TECHNICAL SHEET



ASSEMBLED CODE	4G13SX2
DESCRIPTION	Polymer concrete channel MOD. POLY FLY 150, with AISI 304 stainless steel protective edge rails, c/w AISI 304 stainless steel pressure-locked grating, 25x2-10x2, 55x11 heelguard mesh, pickled, installed and locked. Channel runoff section cm ² 220. Load class C250 according to EN 1433:2008 Norm, if installed following manufacturer instructions.
PRODUCT LINE	Drainage channel type "M"
STANDARD	EN 1433:2008
LOADING CLASS	C250 - EN 1433:2008
INTENDED USE OR USES OF THE PRODUCT	Collection and channelling of surface water into areas subject to pedestrian and/or vehicle traffic according to the indicated flow rate.
DURABILITY	NPD
QUANTITY PER PACK	35
1) CHANNEL	4G13S
MATERIAL	Polymer Concrete
SERIES TYPE	Polyfly series 150
SECTION TYPE	Standard
PROFILE TYPE	Stainless Steel Profiles
VERSION TYPE	Normal without built-in slope
2) GRID	4D13X2
GRID TYPE	Press-locked
MATERIAL	Inox AISI 304 - X5 CrNi 18 10
SURFACE FINISH	Pickled



Article dimensions mm	Inner width mm	Runoff section cmq	Bottom outlet mm	Weight Kg/each
1000 x 204 x H 193	157	220	Ø125	26,86