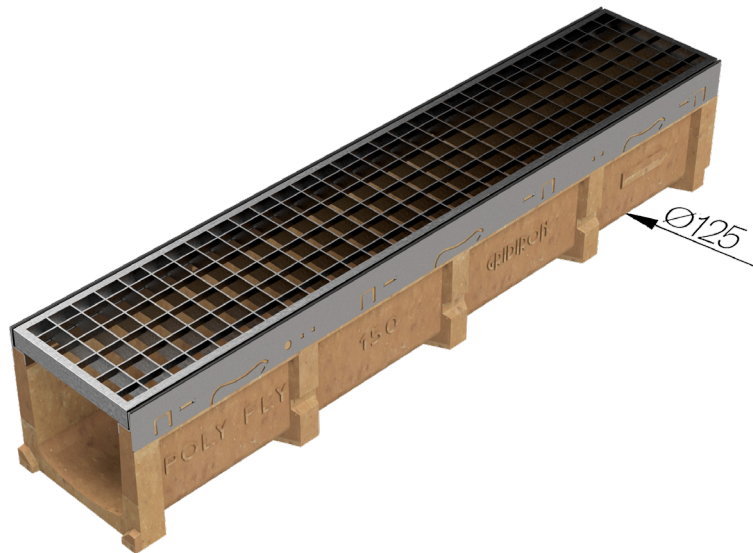
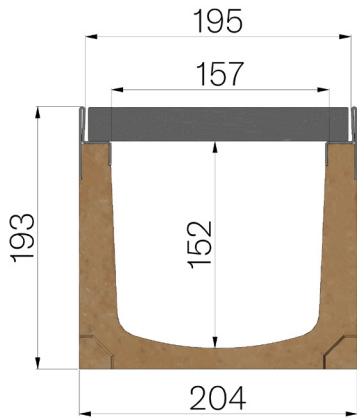


## TECHNICAL SHEET



<b>ASSEMBLED CODE</b>	4G12SG1
<b>DESCRIPTION</b>	Polymer concrete channel MOD. POLY FLY 150, with galvanized steel protective edge rails, c/w S235JR steel pressure-locked grating, 25x2-10x2, 33x33 mesh, hot-dip galvanised, installed and locked. Channel runoff section sqcm. 220. Load class C250 according to EN 1433:2008 Norm, if installed following manufacturer instructions.
<b>PRODUCT LINE</b>	Drainage channel type "M"
<b>STANDARD</b>	EN 1433:2008
<b>LOADING CLASS</b>	C250 - EN 1433:2008
<b>INTENDED USE OR USES OF THE PRODUCT</b>	Collection and channelling of surface water into areas subject to pedestrian and/or vehicle traffic according to the indicated flow rate.
<b>DURABILITY</b>	NPD
<b>QUANTITY PER PACK</b>	35
<b>1) CHANNEL</b>	4G12S
<b>MATERIAL</b>	Polymer Concrete
<b>SERIES TYPE</b>	Polyfly series 150
<b>SECTION TYPE</b>	Standard
<b>PROFILE TYPE</b>	Galvanized edge
<b>VERSION TYPE</b>	Normal without built-in slope
<b>2) GRID</b>	4D12G1
<b>GRID TYPE</b>	Press-locked
<b>MATERIAL</b>	Carbon Steel S235JR acc. to EN 10025-2:2019
<b>SURFACE FINISH</b>	Hot Dip Galvanizing - UNI 1461



Article dimensions mm	Inner width mm	Runoff section cmq	Bottom outlet mm	Weight Kg/each
1000 x 204 x H 193	157	220	Ø 125	25,59