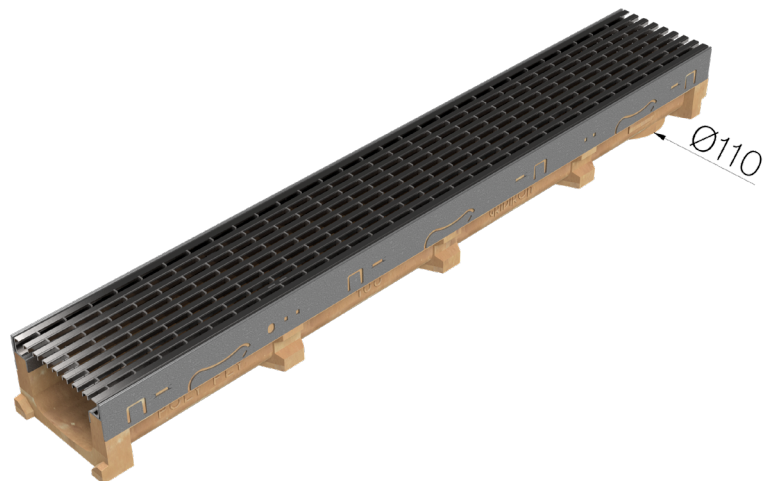
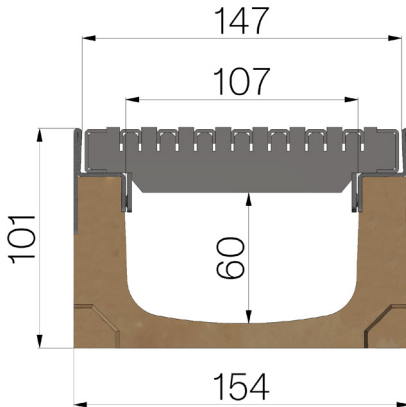


## TECHNICAL SHEET



<b>ASSEMBLED CODE</b>	4G0DSD1
<b>DESCRIPTION</b>	Polymer concrete channel MOD. POLY FLY 100 LOW, with AISI 304 stainless steel protective edge rails, c/w AISI 304 stainless steel grating "HORIZON" model, with U-shaped longitudinal edge rails, heelguard 6 mm slots, self-locking, pickled. Channel runoff section sqcm. 70. Load class B125 according to EN 1433:2008 Norm, if installed following manufacturer instructions.
<b>PRODUCT LINE</b>	Drainage channel type "M"
<b>STANDARD</b>	EN 1433:2008
<b>LOADING CLASS</b>	B125 - EN 1433:2008
<b>INTENDED USE OR USES OF THE PRODUCT</b>	Collection and channelling of surface water into areas subject to pedestrian and/or vehicle traffic according to the indicated flow rate.
<b>DURABILITY</b>	NPD
<b>QUANTITY PER PACK</b>	78
<b>1) CHANNEL</b>	4G0DS
<b>MATERIAL</b>	Polymer Concrete
<b>SERIES TYPE</b>	Polyfly series 100
<b>SECTION TYPE</b>	Low
<b>PROFILE TYPE</b>	Stainless Steel Profiles
<b>VERSION TYPE</b>	Normal without built-in slope
<b>WATER FLOW LT / SEC</b>	0,5%=5 - 1%=7 - 1,5%=8,6 - 2%=9,9 - 3%=12,2
<b>2) GRID</b>	4G03D1
<b>GRID TYPE</b>	Press-locked
<b>MATERIAL</b>	Inox AISI 304 - X5 CrNi 18 10
<b>SURFACE FINISH</b>	Pickled



Article dimensions mm	Inner width mm	Runoff section cmq	Bottom outlet mm	Weight Kg/each
1000 x 154 x H 101	107	70	110	15,42