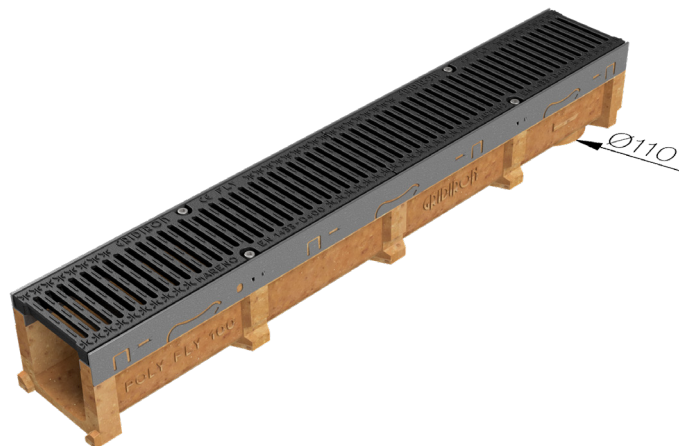
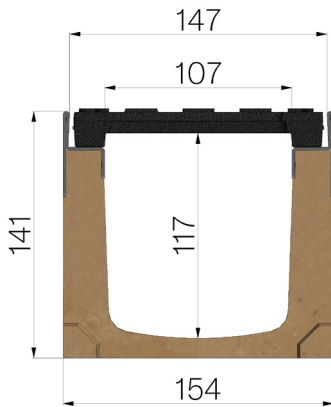


TECHNICAL SHEET



ASSEMBLED CODE	4G02SGSA
DESCRIPTION	Polymer concrete channel MOD. POLY FLY 100, with galvanized steel protective edge rails, c/w 2 x GJS500-7 ductile iron 6 mm slot (heelguard) gratings, painted, installed and locked. Channel runoff section cm ² 108. Load class D400 according to EN 1433:2008 Norm, if installed following manufacturer instructions.
PRODUCT LINE	Drainage channel type "M"
STANDARD	EN 1433:2008
LOADING CLASS	D400 - EN 1433:2008
INTENDED USE OR USES OF THE PRODUCT	Structural carbon steel grating where vehicular and/or pedestrian transit is expected.
DURABILITY	Grades of weathering resistance: W +R (§6.3.3.3 EN 1433:2008)
QUANTITY PER PACK	42
1) CHANNEL	4G02S
MATERIAL	Polymer Concrete
SERIES TYPE	Polyfly series 100
SECTION TYPE	Standard
PROFILE TYPE	Galvanized edge
VERSION TYPE	Normal without built-in slope
2) GRID	4D02GSA1
GRID TYPE	Ductile-iron Grid
MATERIAL	Ductile-Iron GJS500-7 : EN1563
SURFACE FINISH	Paint coating



Article dimensions mm	Inner width mm	Runoff section cmq	Bottom outlet mm	Weight Kg/each
1000 x 154 x H 141	107	108	Ø110	23