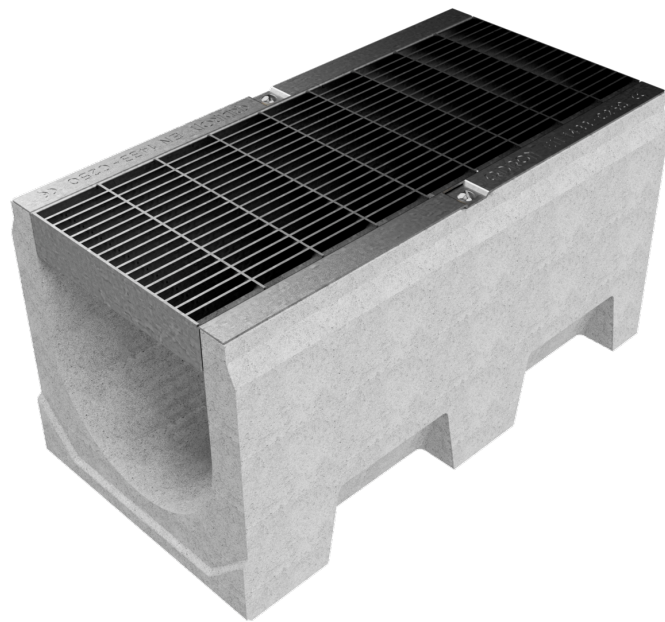
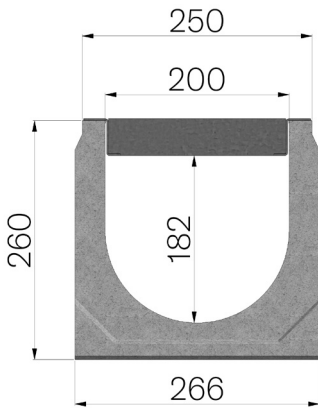


TECHNICAL SHEET



ASSEMBLED CODE	4F25SBA
DESCRIPTION	Vibro-compressed concrete channel MOD. VIBRO-BASE 200 (H1), H260 mm, L. 500 mm, c/w S235JR steel inlay pressure-locked grating, 40x2-10x2, 55x11 heelguard mesh, installed and locked, hot-dip galvanised. Channel average runoff section sqcm. 397. Load class B125 according to EN 1433:2008 Norm, if installed following manufacturer instructions.
PRODUCT LINE	Drainage channel type "M"
LOADING CLASS	B125 - EN 1433:2008
1) CHANNEL	4F25S
MATERIAL	Vibro-compressed Concrete
SERIES TYPE	Vibrobase series 200
SECTION TYPE	H1
PROFILE TYPE	Without profiles
VERSION TYPE	Normal without built-in slope
2) GRID	4521BA
GRID TYPE	Press-locked
MATERIAL	Carbon Steel S235JR acc. to EN 10025-2:2019
SURFACE FINISH	Hot Dip Galvanizing - UNI 1461



Inner width mm	Runoff section cmq	Weight Kg/each
200	397	34,08