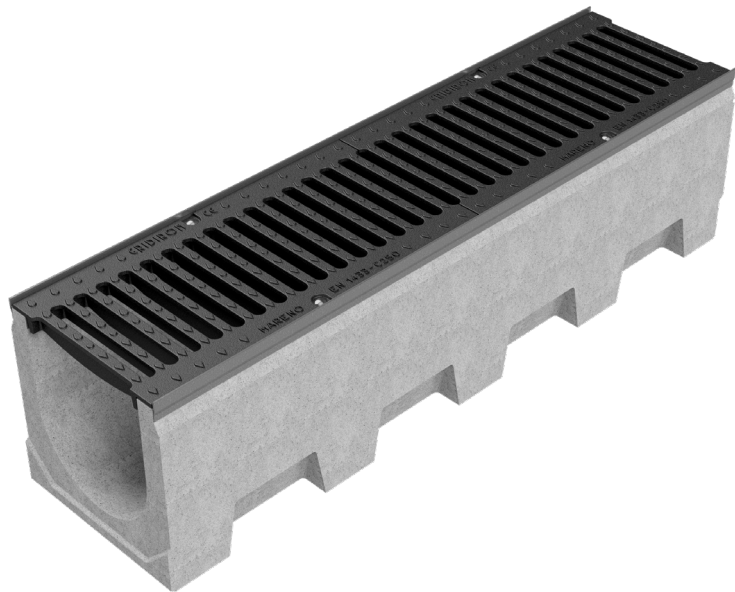
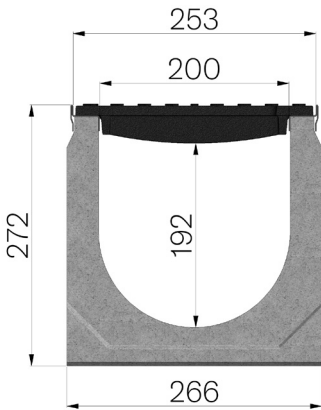


TECHNICAL SHEET



ASSEMBLED CODE	4F20SPS
DESCRIPTION	Vibro-compressed concrete channel MOD. VIBRO-BASE 200 EVO (H1), H272 mm, with galvanised protective edge rails, c/w 2 x GJS500-7 ductile iron inlay gratings, painted, installed and locked. Channel average runoff section cm ² 397. Load class C250 according to EN 1433:2008 Norm, if installed following manufacturer instructions.
PRODUCT LINE	Drainage channel type "M"
STANDARD	EN 1433:2008
LOADING CLASS	C250 - EN 1433:2008
INTENDED USE OR USES OF THE PRODUCT	Collection and channelling of surface water into areas subject to pedestrian and/or vehicle traffic according to the indicated flow rate.
DURABILITY	Grades of weathering resistance: W +R (§6.3.3.3 EN 1433:2008)
1) CHANNEL	4F20S
MATERIAL	Vibro-compressed Concrete
SERIES TYPE	Vibrobase series 200
SECTION TYPE	H1
PROFILE TYPE	Without profiles
VERSION TYPE	Normal without built-in slope
WATER FLOW LT / SEC	0,5%=45,3 -1%=64,1 -1,5%=78,4 -2%=90,6 -3%=110,9
2) GRID	4520GS1
GRID TYPE	Ductile-iron Grid
MATERIAL	Ductile-Iron GJS500-7 : EN1563
SURFACE FINISH	Paint coating



Article dimensions mm	Inner width mm	Runoff section cmq	Weight Kg/each
1000 x 266 x H 272	200	397	83,86