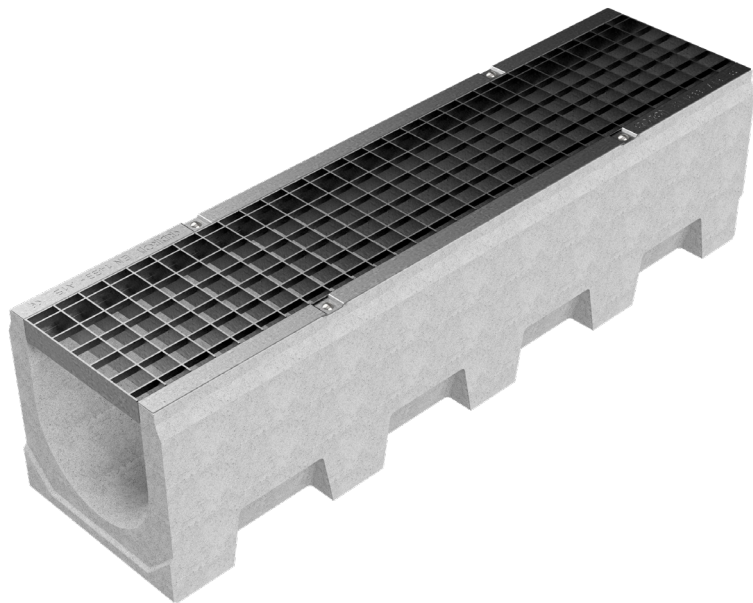
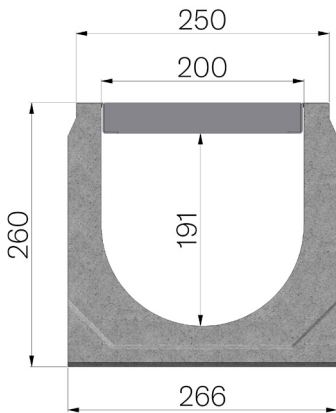


TECHNICAL SHEET



ASSEMBLED CODE	4F20SA
DESCRIPTION	Vibro-compressed concrete channel MOD. VIBRO-BASE 200 (H1), H260 mm, c/w S235JR steel inlay pressure-locked grating, 30x2-10x2, 33x33 mesh, installed and locked, hot-dip galvanised. Channel average runoff section sqcm. 397. Load class A15 according to EN 1433:2008 Norm, if installed following manufacturer instructions.
PRODUCT LINE	Drainage channel type "M"
STANDARD	EN 1433:2008
LOADING CLASS	A15 - EN 1433:2008
INTENDED USE OR USES OF THE PRODUCT	Collection and channelling of surface water into areas subject to pedestrian and/or vehicle traffic according to the indicated flow rate.
DURABILITY	Grades of weathering resistance: W +R (§6.3.3.3 EN 1433:2008)
1) CHANNEL	4F20S
MATERIAL	Vibro-compressed Concrete
SERIES TYPE	Vibrobase series 200
SECTION TYPE	H1
PROFILE TYPE	Without profiles
VERSION TYPE	Normal without built-in slope
WATER FLOW LT / SEC	0,5%=45,3 -1%=64,1 -1,5%=78,4 -2%=90,6 -3%=110,9
TYPE OF GRATING	Flat bar 30x2 Mesh 33x33



Article dimensions mm	Inner width mm	Runoff section cmq	Weight Kg/each
1000 x 266 x H 260	200	397	66,03