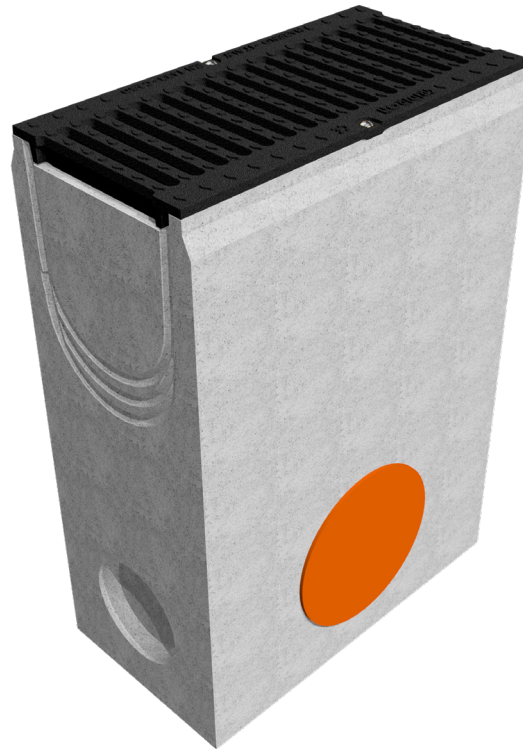
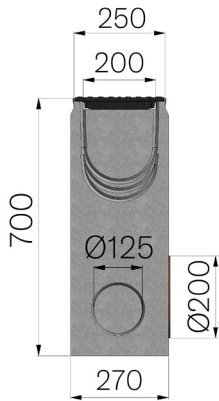


TECHNICAL SHEET



ASSEMBLED CODE	4F20PZGS
DESCRIPTION	Fiber reinforced concrete sump unit, L. 500 mm, for channel MOD. VIBRO-BASE 200, c/w 1 x GJS500-7 ductile iron inlay grating, painted, installed and locked. Load class C250 according to EN 1433:2008 Norm, if installed following manufacturer instructions.
PRODUCT LINE	Fiber reinforced concrete sump units
STANDARD	EN 1433:2008
LOADING CLASS	C250 - EN 1433:2008
INTENDED USE OR USES OF THE PRODUCT	Collection and channelling of surface water into areas subject to pedestrian and/or vehicle traffic according to the indicated flow rate.
DURABILITY	Grades of weathering resistance: W +R (§6.3.3.3 EN 1433:2008)
1) CHANNEL	4F20PZ
MATERIAL	Fiber reinforced concrete
SERIES TYPE	Vibrobase series 200
SECTION TYPE	H1
PROFILE TYPE	Without profiles
VERSION TYPE	Normal without built-in slope
2) GRID	4520GS1
GRID TYPE	Ductile-iron Grid
MATERIAL	Ductile-Iron GJS500-7 : EN1563
SURFACE FINISH	Paint coating



Article dimensions mm	Inner width mm	Runoff section cmq	Bottom outlet mm	Weight Kg/each
500 x 270 x H 700	200	397	Ø200	107,44