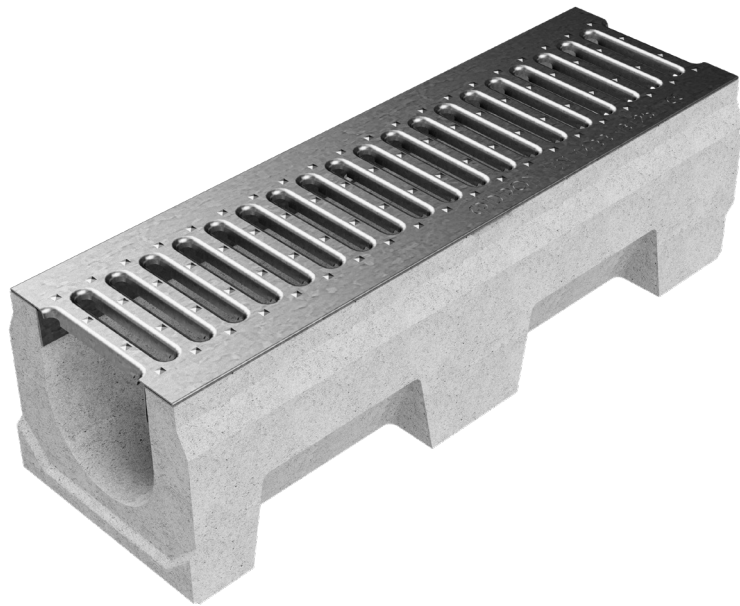
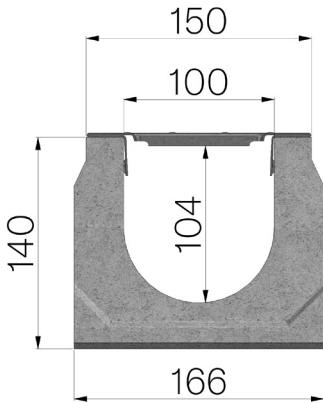


# TECHNICAL SHEET



<b>ASSEMBLED CODE</b>	4F05SGL1
<b>DESCRIPTION</b>	Vibro-compressed concrete channel MOD. VIBRO-BASE 100 (H1), h140 mm, L. 500 mm, c/w galvanised steel inlay press-formed metal sheet grating, 8 mm slots, Th. 12/10, installed, self-locking. Channel average runoff section sqcm. 99. Load class B125 according to EN 1433:2008 Norm, if installed following manufacturer instructions.
<b>PRODUCT LINE</b>	Drainage channel type "M"
<b>LOADING CLASS</b>	B125 - EN 1433:2008
<b>1) CHANNEL</b>	4F05SS
<b>MATERIAL</b>	Vibro-compressed Concrete
<b>SERIES TYPE</b>	Vibrobase series 100
<b>SECTION TYPE</b>	H1
<b>PROFILE TYPE</b>	Without profiles
<b>VERSION TYPE</b>	Normal without built-in slope
<b>2) GRID</b>	4F05GL1
<b>MATERIAL</b>	Metal sheet DX51D - EN 10346/EN 10143
<b>SURFACE FINISH</b>	Galvanized Z200 - EN 10346



Inner width mm	Runoff section cmq	Weight Kg/each
100	99	15,07