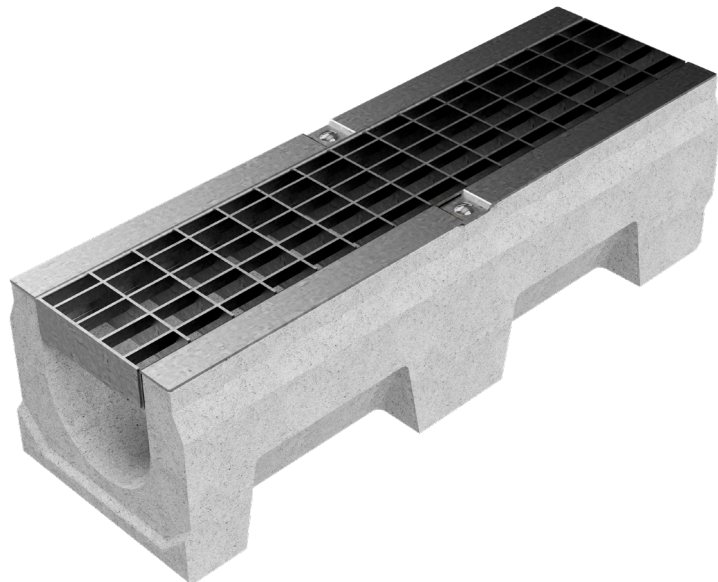
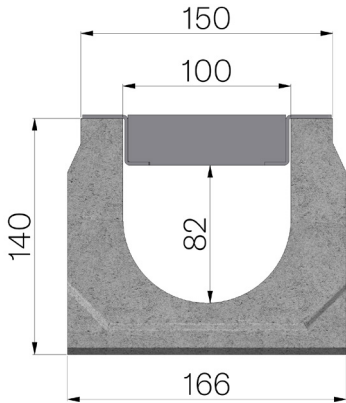


TECHNICAL SHEET



ASSEMBLED CODE	4F05SB
DESCRIPTION	Vibro-compressed concrete channel MOD. VIBRO-BASE 100 (H1), h140 mm, L. 500 mm, c/w S235JR steel inlay pressure-locked grating, 30x2-10x2, 33x22 mesh, installed and locked, hot-dip galvanised. Channel average runoff section sqcm. 99. Load class B125 according to EN 1433:2008 Norm, if installed following manufacturer instructions.
PRODUCT LINE	Drainage channel type "M"
LOADING CLASS	B125 - EN 1433:2008
1) CHANNEL	4F05S
MATERIAL	Vibro-compressed Concrete
SERIES TYPE	Vibrobase series 100
SECTION TYPE	H1
PROFILE TYPE	Without profiles
VERSION TYPE	Normal without built-in slope
2) GRID	4F05B
GRID TYPE	Press-locked
MATERIAL	Carbon Steel S235JR acc. to EN 10025-2:2019
SURFACE FINISH	Hot Dip Galvanizing - UNI 1461



Inner width mm	Runoff section cmq	Weight Kg/each
100	99	15,88