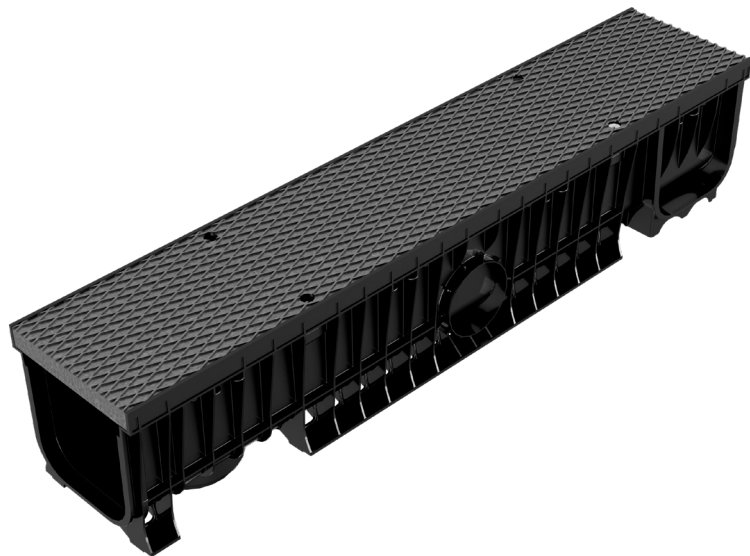
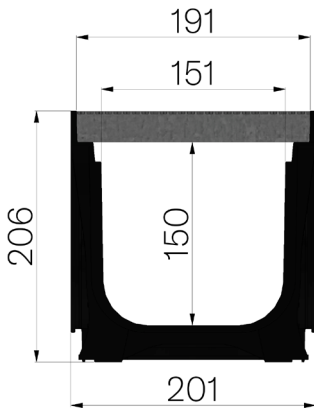


## TECHNICAL SHEET



<b>ASSEMBLED CODE</b>	4D11SP
<b>DESCRIPTION</b>	ABS channel MOD. PLASTIC FLY 150 , with ABS protective edge rails, c/w embossed metal sheet plate Th. 30/10, reinforced, installed and locked, hot-dip galvanised. Channel average runoff section cm <sup>2</sup> 216. Load class C250 according to EN 1433:2008 Norm, if installed following manufacturer instructions.
<b>PRODUCT LINE</b>	Drainage channel type "M"
<b>STANDARD</b>	EN 1433:2008
<b>LOADING CLASS</b>	C250 - EN 1433:2008
<b>INTENDED USE OR USES OF THE PRODUCT</b>	Collection and channelling of surface water into areas subject to pedestrian and/or vehicle traffic according to the indicated flow rate.
<b>DURABILITY</b>	NPD
<b>QUANTITY PER PACK</b>	35
<b>1) CHANNEL</b>	4D11S
<b>MATERIAL</b>	ABS
<b>SERIES TYPE</b>	Plasticfly series 150
<b>SECTION TYPE</b>	Standard
<b>PROFILE TYPE</b>	ABS Profiles
<b>VERSION TYPE</b>	Normal without built-in slope
<b>2) METAL SHEET PLATE</b>	4D12P
<b>TYPE OF METAL PLATE</b>	Metal sheet plates for channels
<b>MATERIAL</b>	Carbon Steel S235JR acc. to EN 10025-2:2019
<b>UPPER SHEET METAL</b>	Embossed metal sheet plate 30/10



Article dimensions mm	Inner width mm	Runoff section cmq	Weight Kg/each
1000 x 201 x H 206	151	216	19,39