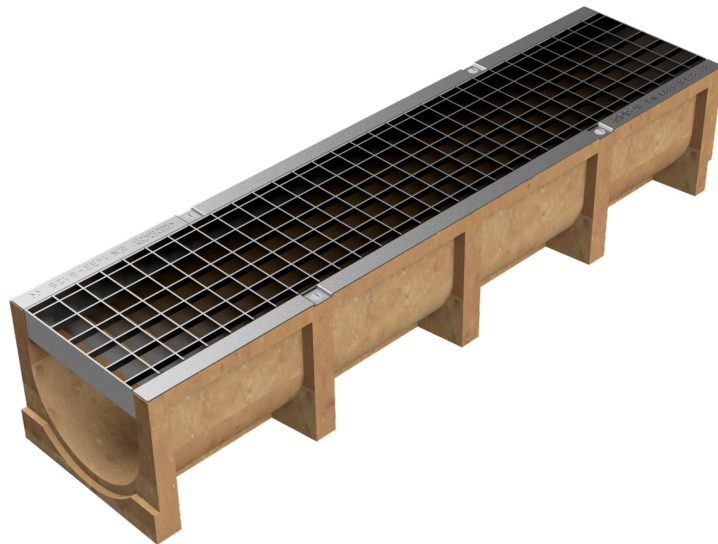
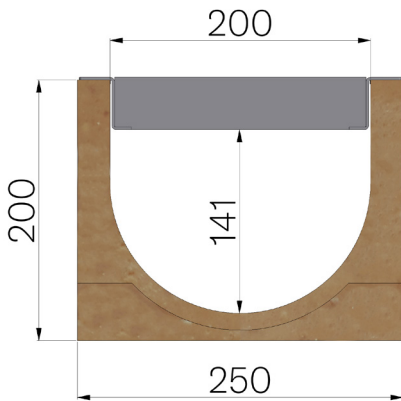


TECHNICAL SHEET



ASSEMBLED CODE	4520SB
DESCRIPTION	Polymer concrete channel MOD. BASE 200, c/w S235JR steel inlay pressure-locked grating, 40x2-10x2, 33x33 mesh, installed and locked, hot-dip galvanised. Channel average runoff section sqcm. 315. Load class B125 according to EN 1433:2008 Norm, if installed following manufacturer instructions.
PRODUCT LINE	Drainage channel type "M"
LOADING CLASS	B125 - EN 1433:2008
1) CHANNEL	4520S
MATERIAL	Polymer Concrete
SERIES TYPE	Base series 200
SECTION TYPE	Standard
PROFILE TYPE	Without profiles
VERSION TYPE	Normal without built-in slope
2) GRID	4520B
GRID TYPE	Press-locked
MATERIAL	Carbon Steel S235JR acc. to EN 10025-2:2019
SURFACE FINISH	Hot Dip Galvanizing - UNI 1461



Inner width mm	Runoff section cmq	Weight Kg/each
200	315	28,25