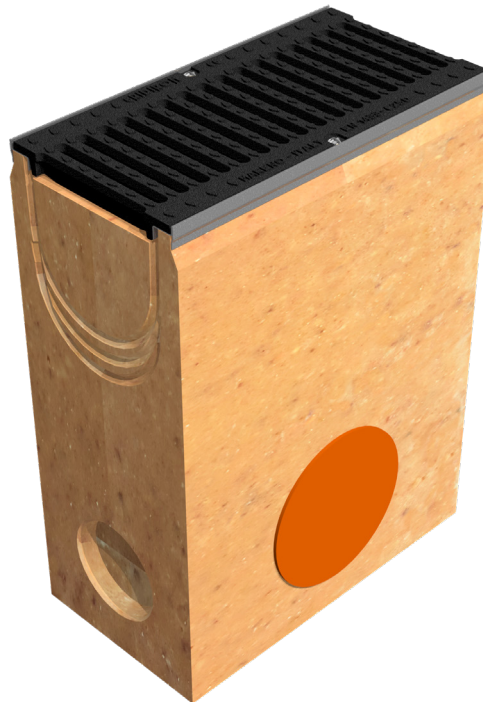


TECHNICAL SHEET



CODE	4520PPS
DESCRIPTION	Polymer concrete sump unit, L. 500 mm, for channel MOD. BASE 200 EVO, with galvanised protective edge rails, c/w 1 x GJS500-7 ductile iron inlay gratings, painted, installed and locked. Load class C250 according to EN 1433:2008 Norm, if installed following manufacturer instructions.
PRODUCT LINE	Drainage channel type "M"
MATERIAL	Polymer Concrete
SERIES TYPE	Base series 200
SECTION TYPE	Standard
PROFILE TYPE	Galvanized edge
VERSION TYPE	Normal without built-in slope
LOADING CLASS	C250 - EN 1433:2008



Inner width mm	Runoff section cmq	Weight Kg/each
200	200	108,27