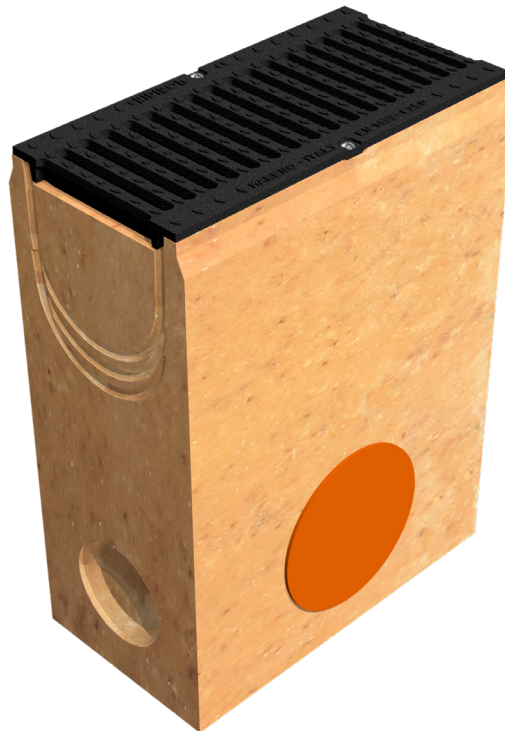
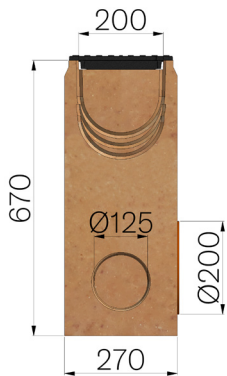


# TECHNICAL SHEET



<b>CODE</b>	4520PGS
<b>DESCRIPTION</b>	Polymer concrete sump unit, L. 500 mm, for channel MOD. BASE 200, c/w 1 x GJS500-7 ductile iron inlay gratings, painted, installed and locked and locked. Load class C250 according to EN 1433:2008 Norm, if installed following manufacturer instructions.
<b>PRODUCT LINE</b>	Drainage channel type "M"
<b>MATERIAL</b>	Polymer Concrete
<b>SERIES TYPE</b>	Base series 200
<b>SECTION TYPE</b>	Standard
<b>PROFILE TYPE</b>	Without profiles
<b>VERSION TYPE</b>	Normal without built-in slope
<b>LOADING CLASS</b>	C250 - EN 1433:2008



Inner width mm	Runoff section cmq	Weight Kg/each
200	200	107,44