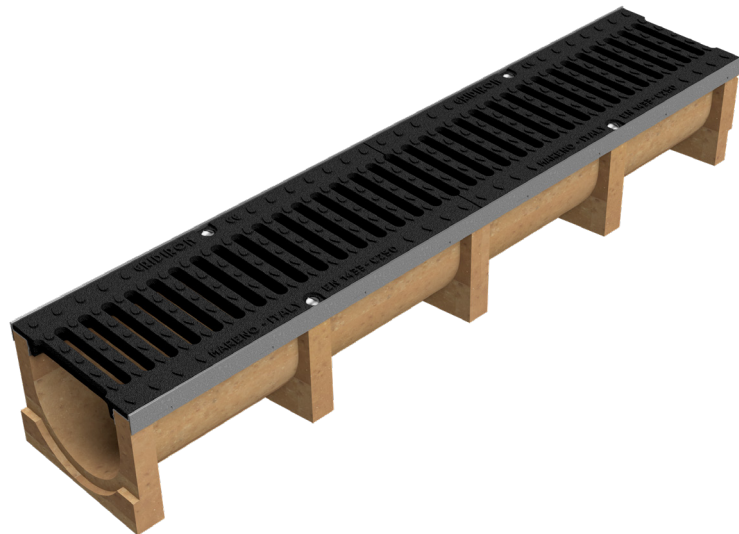
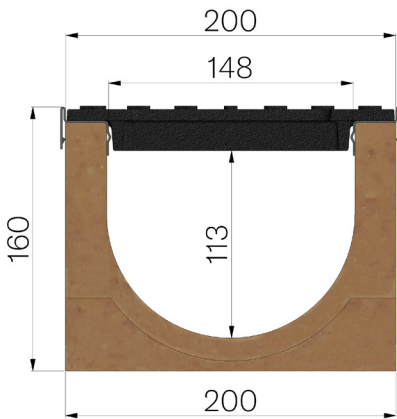


# TECHNICAL SHEET



<b>ASSEMBLED CODE</b>	4510SPS
<b>DESCRIPTION</b>	Polymer concrete channel MOD. BASE 150 EVO, with galvanised protective edge rails, c/w 2 x GJS500-7 ductile iron inlay gratings, painted, installed and locked. Channel average runoff section sqcm. 171. Load class C250 according to EN 1433:2008 Norm, if installed following manufacturer instructions.
<b>PRODUCT LINE</b>	Drainage channel type "M"
<b>STANDARD</b>	EN 1433:2008
<b>LOADING CLASS</b>	C250 - EN 1433:2008
<b>INTENDED USE OR USES OF THE PRODUCT</b>	Collection and channelling of surface water into areas subject to pedestrian and/or vehicle traffic according to the indicated flow rate.
<b>DURABILITY</b>	Grades of weathering resistance: W +R (§6.3.3.3 EN 1433:2008)
<b>1) CHANNEL</b>	4510S
<b>MATERIAL</b>	Polymer Concrete
<b>SERIES TYPE</b>	Base series 150
<b>SECTION TYPE</b>	Standard
<b>PROFILE TYPE</b>	Without profiles
<b>VERSION TYPE</b>	Normal without built-in slope



Article dimensions mm	Inner width mm	Runoff section cmq	Weight Kg/each
1000 x 200 x H160	150	171	27,12