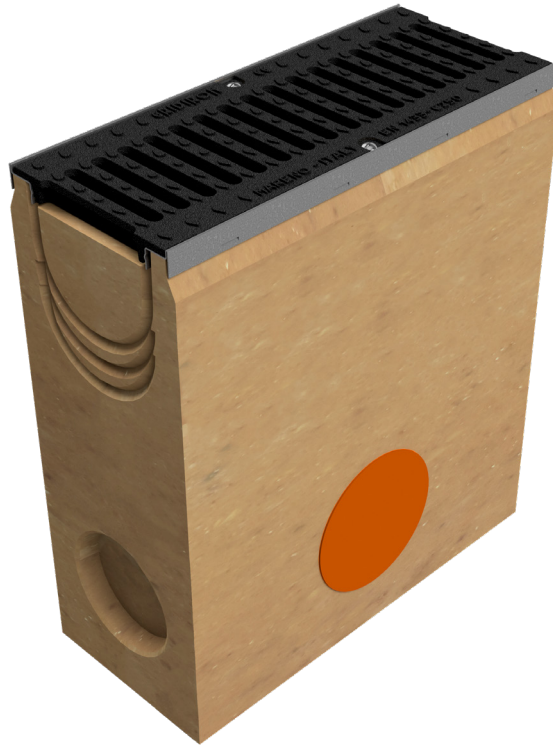


TECHNICAL SHEET



| | |
|----------------------|---|
| CODE | 4510PPS |
| DESCRIPTION | Polymer concrete sump unit, L. 500 mm, for channel MOD. BASE 150 EVO, with galvanised protective edge rails, c/w 1 x GJS500-7 ductile iron inlay gratings, painted, installed and locked. Load class C250 according to EN 1433:2008 Norm, if installed following manufacturer instructions. |
| PRODUCT LINE | Drainage channel type "M" |
| MATERIAL | Polymer Concrete |
| SERIES TYPE | Base series 150 |
| SECTION TYPE | Standard |
| PROFILE TYPE | Galvanized edge |
| VERSION TYPE | Normal without built-in slope |
| LOADING CLASS | C250 - EN 1433:2008 |



| Inner width mm | Runoff section cmq | Weight Kg/each |
|----------------|--------------------|----------------|
| 150 | 160 | 79,11 |