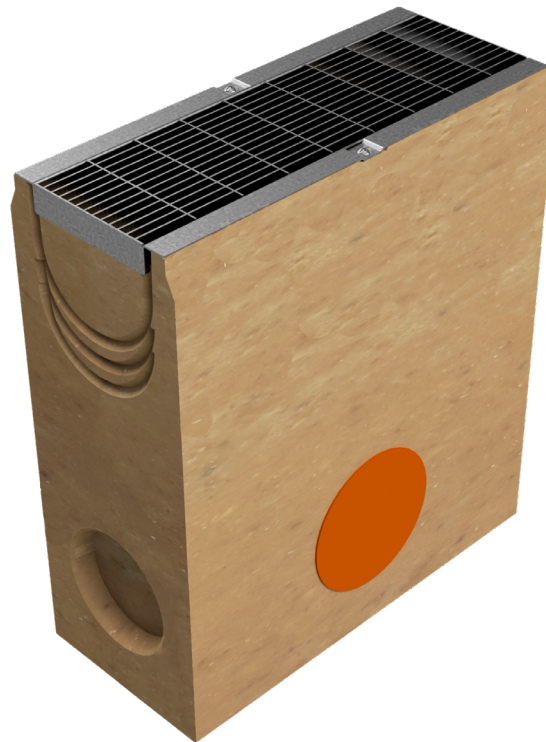
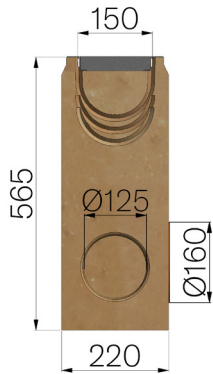


TECHNICAL SHEET



CODE	4510PBA
DESCRIPTION	Polymer concrete sump unit, L. 500 mm, for channel MOD. BASE 150, c/w S235JR steel inlay pressure-locked grating, 30x2-10x2, 55x11 heelguard mesh, installed and locked, hot-dip galvanised. Load class B125 according to EN 1433:2008 Norm, if installed following manufacturer instructions.
PRODUCT LINE	Drainage channel type "M"
MATERIAL	Polymer Concrete
SERIES TYPE	Base series 150
SECTION TYPE	Standard
PROFILE TYPE	Without profiles
VERSION TYPE	Normal without built-in slope
LOADING CLASS	B125 - EN 1433:2008



Inner width mm	Runoff section cmq	Weight Kg/each
100	160	75,07