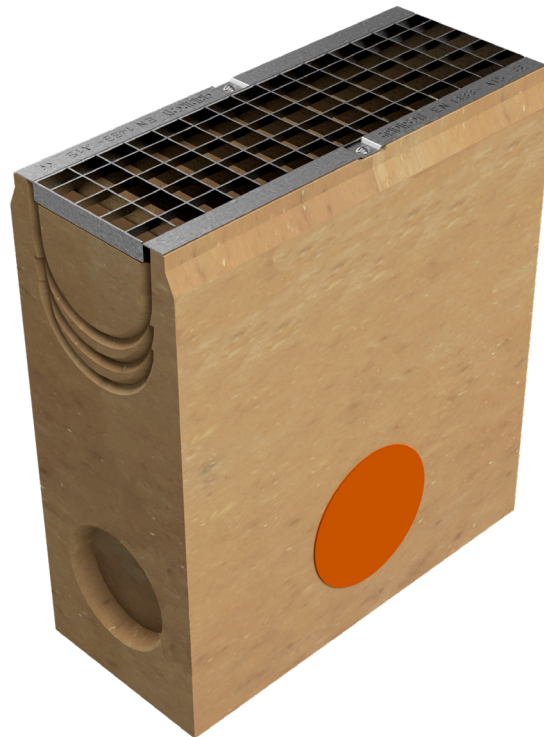


# TECHNICAL SHEET



<b>CODE</b>	4510PA
<b>DESCRIPTION</b>	Polymer concrete sump unit, L. 500 mm, for channel MOD. BASE 150, c/w S235JR steel inlay pressure-locked grating, 20x2-10x2, 33x33 mesh, installed and locked, hot-dip galvanised. Load class A15 according to EN 1433:2008 Norm, if installed following manufacturer instructions.
<b>PRODUCT LINE</b>	Drainage channel type "M"
<b>MATERIAL</b>	Polymer Concrete
<b>SERIES TYPE</b>	Base series 150
<b>SECTION TYPE</b>	Standard
<b>PROFILE TYPE</b>	Without profiles
<b>VERSION TYPE</b>	Normal without built-in slope
<b>LOADING CLASS</b>	A15 - EN 1433:2008



Inner width mm	Runoff section cmq	Weight Kg/each
100	160	73,87