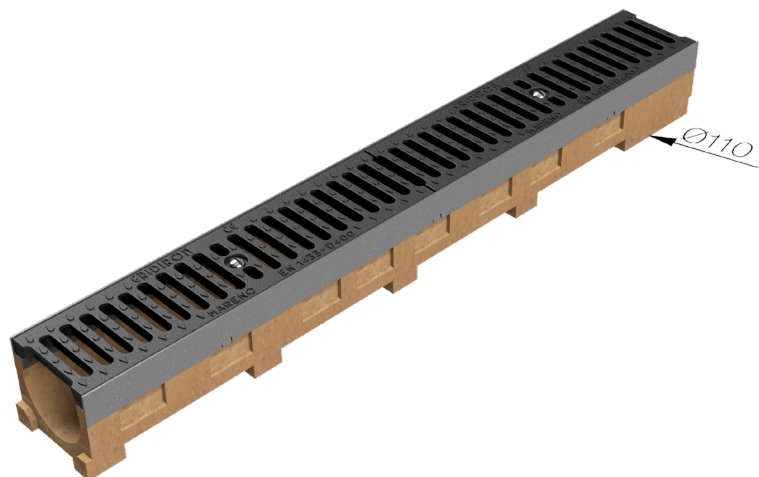
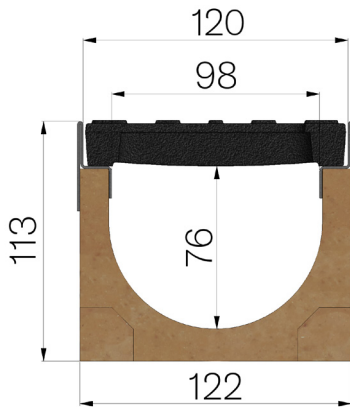


TECHNICAL SHEET



ASSEMBLED CODE	4505SPG
DESCRIPTION	Polymer concrete channel MOD. BASE 100 EVO, with galvanised protective edge rails, c/w 2 x GJS500-7 ductile iron inlay gratings, painted, installed and locked and locked. Channel average runoff section cm ² 62. Load class C250 according to EN 1433:2008 Norm, if installed following manufacturer instructions.
PRODUCT LINE	Drainage channel type "M"
STANDARD	EN 1433:2008
LOADING CLASS	C250 - EN 1433:2008
INTENDED USE OR USES OF THE PRODUCT	Collection and channelling of surface water into areas subject to pedestrian and/or vehicle traffic according to the indicated flow rate.
DURABILITY	Grades of weathering resistance: W +R (§6.3.3.3 EN 1433:2008)
1) CHANNEL	4505S
MATERIAL	Polymer Concrete
SERIES TYPE	Base series 100
SECTION TYPE	Standard
PROFILE TYPE	Without profiles
VERSION TYPE	Normal without built-in slope
WATER FLOW LT / SEC	0,5%=4,1 - 1%=5,8 - 1,5%=7,1 - 2%=8,3 - 3%=10,1
2) GRID	4079GJ1
GRID TYPE	Ductile-iron Grid
MATERIAL	Ductile-Iron GJS500-7 : EN1563
SURFACE FINISH	Paint coating



Article dimensions mm	Inner width mm	Runoff section cmq	Bottom outlet mm	Weight Kg/each
1000 x 122 x H 113	98	62	Ø110	16,02