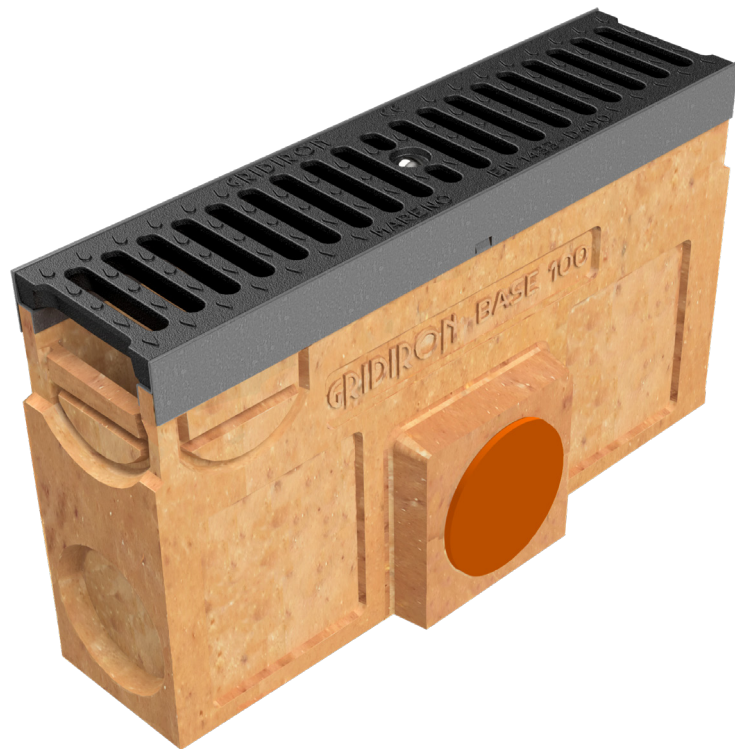
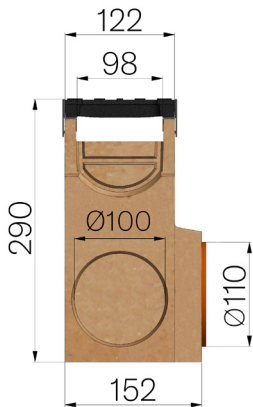


TECHNICAL SHEET



ASSEMBLED CODE	4505PPG
DESCRIPTION	Polymer concrete sump unit, L.500 mm, for polymer concrete channel MOD. BASE 100 EVO and BASE 100 LOW EVO, with galvanised protective edge rails, c/w 1 x GJS500-7 ductile iron inlay gratings, painted, installed and locked. Load class C250 according to EN 1433:2008 Norm, if installed following manufacturer instructions.
PRODUCT LINE	Drainage channel type "M"
STANDARD	EN 1433:2008
LOADING CLASS	C250 - EN 1433:2008
INTENDED USE OR USES OF THE PRODUCT	Collection and channelling of surface water into areas subject to pedestrian and/or vehicle traffic according to the indicated flow rate.
DURABILITY	NPD
1) CHANNEL	4505P
MATERIAL	Polymer Concrete
SERIES TYPE	Base series 100
SECTION TYPE	Standard
PROFILE TYPE	Without profiles
VERSION TYPE	Normal without built-in slope
2) GRID	4079GJ1
GRID TYPE	Ductile-iron Grid
MATERIAL	Ductile-Iron GJS500-7 : EN1563
SURFACE FINISH	Paint coating



Article dimensions mm	Inner width mm	Runoff section cmq	Bottom outlet mm	Weight Kg/each
500 x 152 x H 290	98	62	110	17