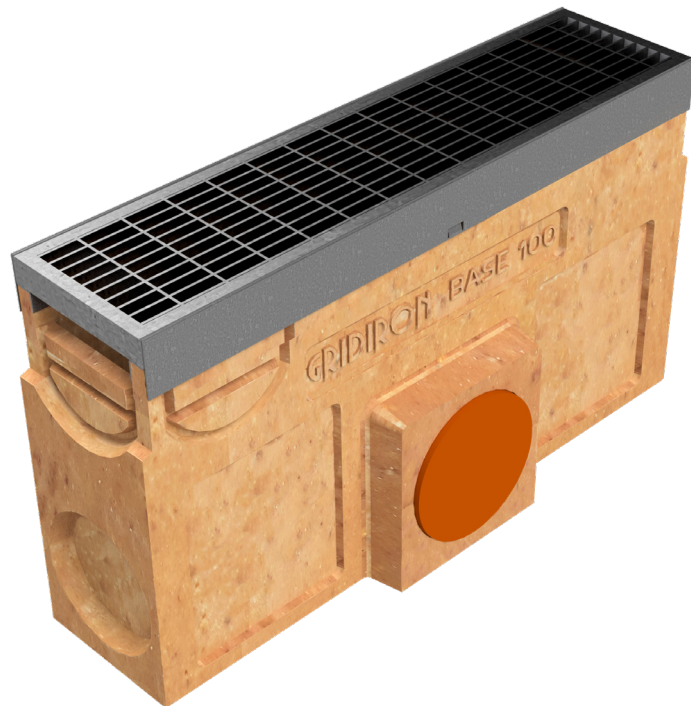
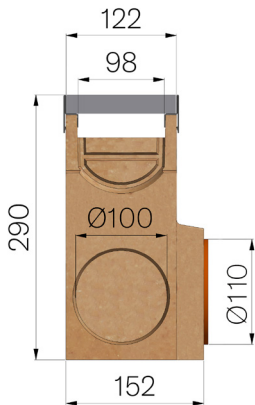


## TECHNICAL SHEET



<b>ASSEMBLED CODE</b>	4505PPGA
<b>DESCRIPTION</b>	Polymer concrete sump unit, L.500 mm, for polymer concrete channel MOD. BASE 100 EVO and BASE 100 LOW EVO, with galvanised protective edge rails, c/w S235JR steel inlay pressure-locked grating, 20x2-10x2, 33x11 heelguard mesh, installed and locked, hot dip galvanised. Load class B125 according to EN 1433:2008 Norm, if installed following manufacturer instructions.
<b>PRODUCT LINE</b>	Drainage channel type "M"
<b>STANDARD</b>	EN 1433:2008
<b>LOADING CLASS</b>	B125 - EN 1433:2008
<b>INTENDED USE OR USES OF THE PRODUCT</b>	Collection and channelling of surface water into areas subject to pedestrian and/or vehicle traffic according to the indicated flow rate.
<b>DURABILITY</b>	NPD
<b>1) CHANNEL</b>	4505P
<b>MATERIAL</b>	Polymer Concrete
<b>SERIES TYPE</b>	Base series 100
<b>SECTION TYPE</b>	Standard
<b>PROFILE TYPE</b>	Without profiles
<b>VERSION TYPE</b>	Normal without built-in slope
<b>2) GRID</b>	4506GPAB
<b>GRID TYPE</b>	Press-locked
<b>MATERIAL</b>	Carbon Steel S235JR acc. to EN 10025-2:2019
<b>SURFACE FINISH</b>	Hot Dip Galvanizing - UNI 1461



Article dimensions mm	Inner width mm	Runoff section cmq	Bottom outlet mm	Weight Kg/each
500 x 152 x H 290	98	62	Ø110	36,57