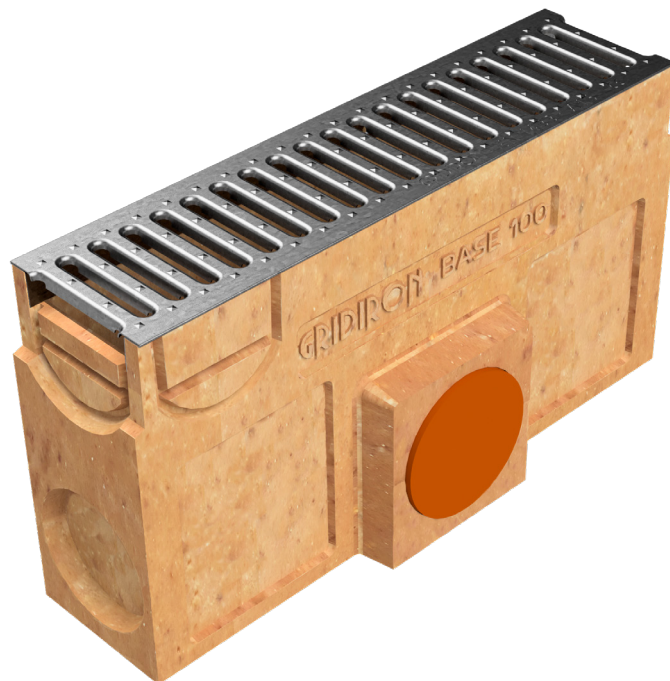
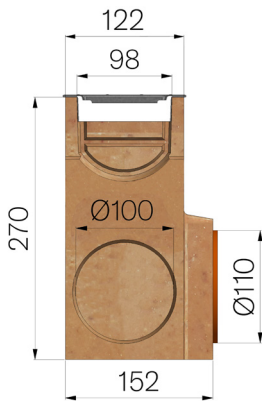


## TECHNICAL SHEET



<b>ASSEMBLED CODE</b>	4505PLA
<b>DESCRIPTION</b>	Polymer concrete sump unit, L. 500 mm, for channel MOD. BASE 100 and BASE 100 LOW, c/w galvanised steel inlay press-formed metal sheet grating, 8 mm slots, Th. 10/10, installed, self-locking. Load class A15 according to EN 1433:2008 Norm, if installed following manufacturer instructions.
<b>PRODUCT LINE</b>	Drainage channel type "M"
<b>STANDARD</b>	EN 1433:2008
<b>LOADING CLASS</b>	A15 - EN 1433:2008
<b>INTENDED USE OR USES OF THE PRODUCT</b>	Collection and channelling of surface water into areas subject to pedestrian and/or vehicle traffic according to the indicated flow rate.
<b>DURABILITY</b>	NPD
<b>1) CHANNEL</b>	4505P
<b>MATERIAL</b>	Polymer Concrete
<b>SERIES TYPE</b>	Base series 100
<b>SECTION TYPE</b>	Standard
<b>PROFILE TYPE</b>	Without profiles
<b>VERSION TYPE</b>	Normal without built-in slope
<b>2) GRID</b>	4506GLA
<b>MATERIAL</b>	Metal sheet DX51D - EN 10346/EN 10143
<b>SURFACE FINISH</b>	None



Article dimensions mm	Inner width mm	Runoff section cmq	Weight Kg/each
500 x 152 x H 270	98	62	35,26