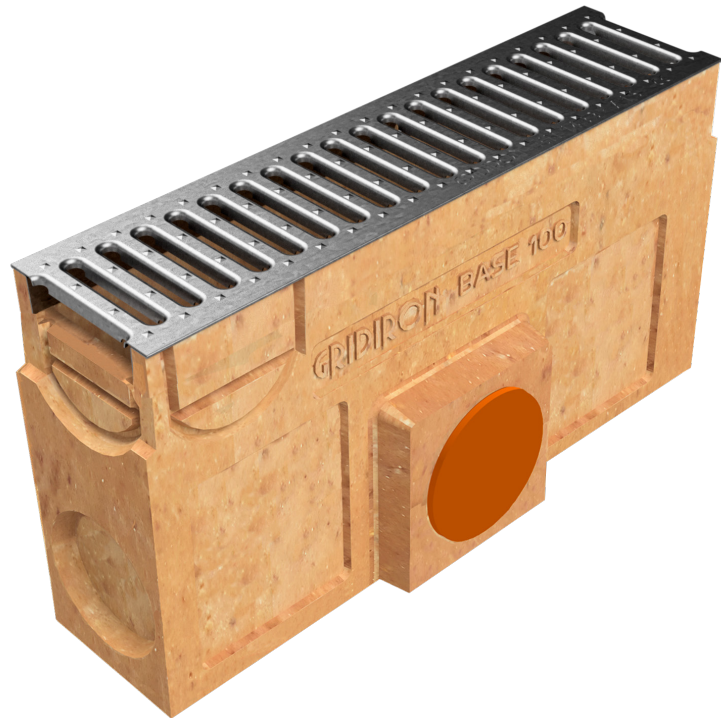
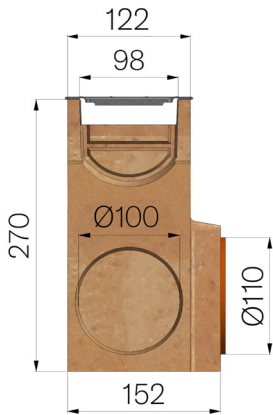


TECHNICAL SHEET



ASSEMBLED CODE	4505PL8
DESCRIPTION	Polymer concrete sump unit, L. 500 mm, for channel MOD. BASE 100 and BASE 100 LOW, c/w galvanised steel inlay press-formed metal sheet grating, 6 mm (heelguard) slots, Th. 10/10, installed, self-locking. Load class A15 according to EN 1433:2008 Norm, if installed following manufacturer instructions.
PRODUCT LINE	Drainage channel type "M"
STANDARD	EN 1433:2008
LOADING CLASS	A15 - EN 1433:2008
INTENDED USE OR USES OF THE PRODUCT	Collection and channelling of surface water into areas subject to pedestrian and/or vehicle traffic according to the indicated flow rate.
DURABILITY	NPD
1) CHANNEL	4505P
MATERIAL	Polymer Concrete
SERIES TYPE	Base series 100
SECTION TYPE	Standard
PROFILE TYPE	Without profiles
VERSION TYPE	Normal without built-in slope
2) GRID	4506GL8
MATERIAL	Metal sheet DX51D - EN 10346/EN 10143
SURFACE FINISH	None



Article dimensions mm	Inner width mm	Runoff section cmq	Bottom outlet mm	Weight Kg/each
500 x 152 x H 270	100	62	Ø110	35,22