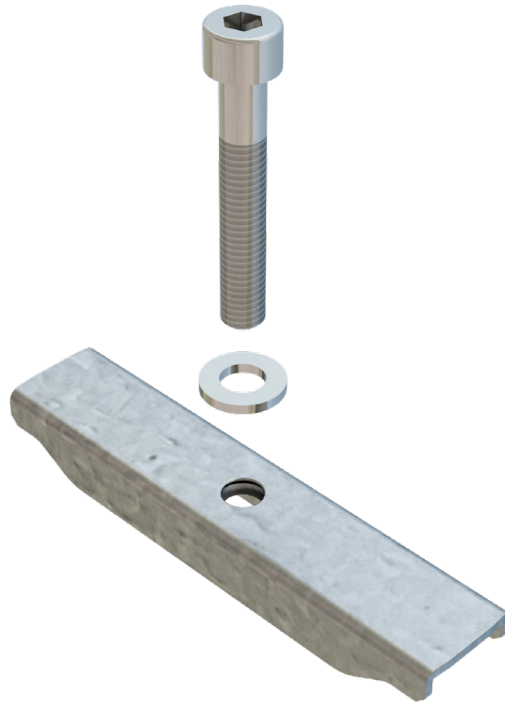
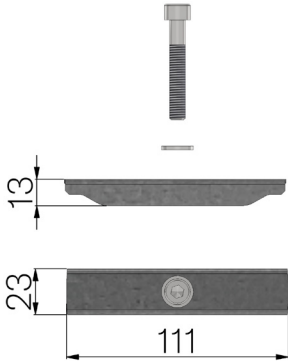


TECHNICAL SHEET

CODE	4351B
DESCRIPTION	Anchor for hot-dip galvanised 20x2-10x2 33x33 pressure-locked grating for channels mod. STREAM, STILL, SMART e BASE.
MATERIAL	S235JR steel - EN 10025-2:2019



Article dimensions mm	Weight Kg/each
111 x 23	0,09