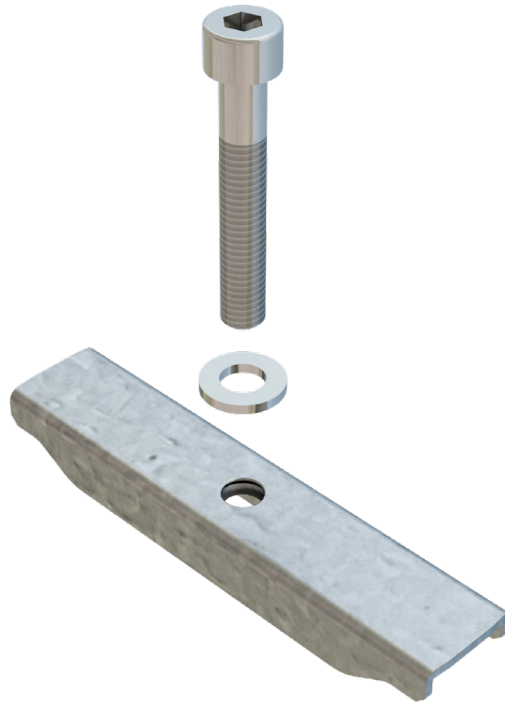
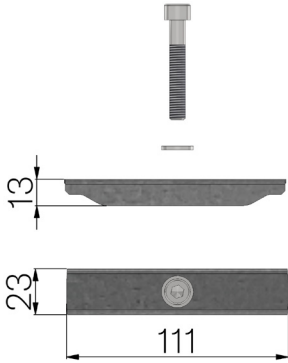


TECHNICAL SHEET

CODE	4351BA
DESCRIPTION	Anchor for hot-dip galvanised 20x2-10x2 55x11 and 33x11 heelguard pressure-locked grating for STREAM/STILL/SMART/BASE drain channels.
MATERIAL	S235JR steel - EN 10025-2:2019



Article dimensions mm	Weight Kg/each
111 x 23	0,09