

Prêles Chasseral



Switzerland | **Sotheby's**
INTERNATIONAL REALTY

The Commune	4
The Project	5
Situation	6
Construction	8
Gallery	9
Technical data	14
Contact	15

The Commune

The village of Prêles, perched on the Diesse plateau, is part of the Chasseral regional nature park, and stands out for its peaceful, unspoiled atmosphere.

Surrounded by forests and mountains, it offers an ideal setting for lovers of nature and the great outdoors.

The Chasseral is a veritable playground for hikers and outdoor enthusiasts, while the lakes of Biel and Neuchâtel offer summertime relaxation.

The commune boasts a vibrant local life and local amenities, offering the perfect balance between tranquillity and essential services.

Living in Prêles means enjoying an exceptional natural environment and a rare quality of life, in a village on a human scale where nature is omnipresent.



Nearby shops and amenities



Surrounded by forests and mountains



Idyllic setting close to nature



The Project

Located on the Plateau de Diesse, in the heart of a calm, green environment, the Chasseral 10 residence is an exceptional residential project comprising two adjoining 5.5-room villas.

Built on 4 levels, these homes offer around 190 m² of floor space, with a layout designed for optimum living comfort. They benefit from unobstructed views of the lakes and the Alps, providing a unique and privileged living environment.

The project's architecture blends harmoniously into the surrounding landscape, with facades entirely in wood. This choice gives the complex an elegant, natural identity, while reinforcing the link with its surroundings and creating a warm, contemporary atmosphere.

Each villa has a private garden of over 400 m², ideal for enjoying the sunny days, as well as terraces for outdoor relaxation. Two parking spaces complete each property for everyday convenience.

This development represents a rare opportunity to live in an environment combining modern comfort, tranquility and nature, for a sustainable and privileged quality of life.



Quiet, green surroundings



Unobstructed view of the lakes and the Alps



A wooden structure and sustainable materials







Situation

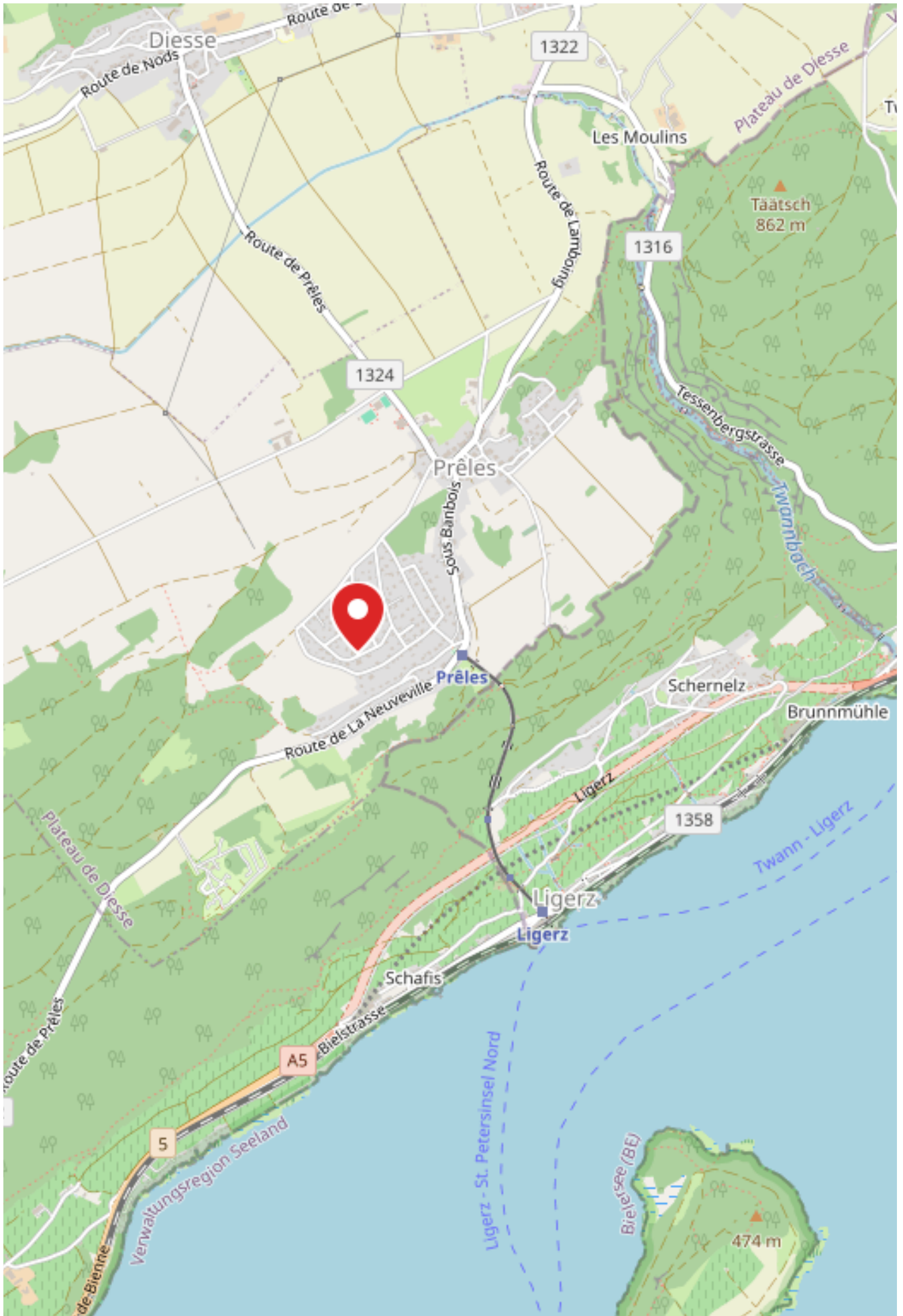
Situated on the Plateau de Diesse, Prêles is strategically located just a few minutes from La Neuveville, providing quick access to shops and services.

The towns of Biel and Neuchâtel can also be reached in around 20 minutes, offering all the conveniences of a city while retaining the calm of a rural village.

The location on the heights of the Chasseral offers not only an exceptional panorama of the three-lake region and the Alps, but also a luminous setting above the winter gloom.

This privileged location combines tranquility, proximity to nature and easy access to urban centers.

				
Bank	1.1 km	15 min	15 min	2 min
Hospital	15.9 km	182 min	53 min	21 min
Nursery school	3.3 km	44 min	15 min	5 min
Post	3.3 km	44 min	15 min	5 min
Primary school	6.7 km	87 min	22 min	10 min
Public transport	599 m	8 min	8 min	2 min
Restaurants	666 m	9 min	9 min	2 min
Secondary school	15.2 km	172 min	51 min	19 min
Shops	1.1 km	14 min	14 min	2 min



Construction

The Chasseral 10 residence is a futuristic project combining contemporary architecture, modern comfort and energy efficiency. The two adjoining villas will be designed to offer a sustainable and harmonious living environment, in perfect symbiosis with the surrounding nature.

The energy system is based on an air-to-water heat pump and photovoltaic panels integrated into the roof, guaranteeing efficient heating, economical hot water and partial production of renewable electricity.

The construction combines solidity and modernity, with underground concrete and masonry sections, timber-framed above-ground levels and all-wood facades. The gable roof, with its traditional framework and terracotta tiles, incorporates solar panels. High-performance thermal insulation and firewalls ensure comfort and safety.

Interior and exterior finishes will be meticulous, with the possibility for purchasers to customize materials and equipment. Depending on feasibility and progress on site, modifications to the plans may also be considered.

Chasseral 10 offers the opportunity to live in elegant, comfortable and sustainable villas in the heart of an exceptional natural setting.



Environmentally-friendly sustainable construction



Unobstructed views of nature and surrounding landscapes



Each home has its own private garden



Galerie











Technical data

State

- New

Equipment

- Connections Washing Column
- Shower
- Kitchen

Proximity

- Post
- Bus stop
- Play area
- School secondary
- Shops
- Bank
- Restaurant
- School Primary
- Hospital

Exterior

- Peace
- Covered Parking
- Garden
- Greenery

Interior

- Open Kitchen
- Bath
- Guest Lavatory
- Cellar
- Bright

Ground

- Parquet Floor
- Tiles

Sunshine

- Optimal

Sight

- Alps
- Lake
- Forest

Style

- Modern

Contact



Raphael Bonjour

+41 79 885 19 26

raphael.bonjour@swsir.ch

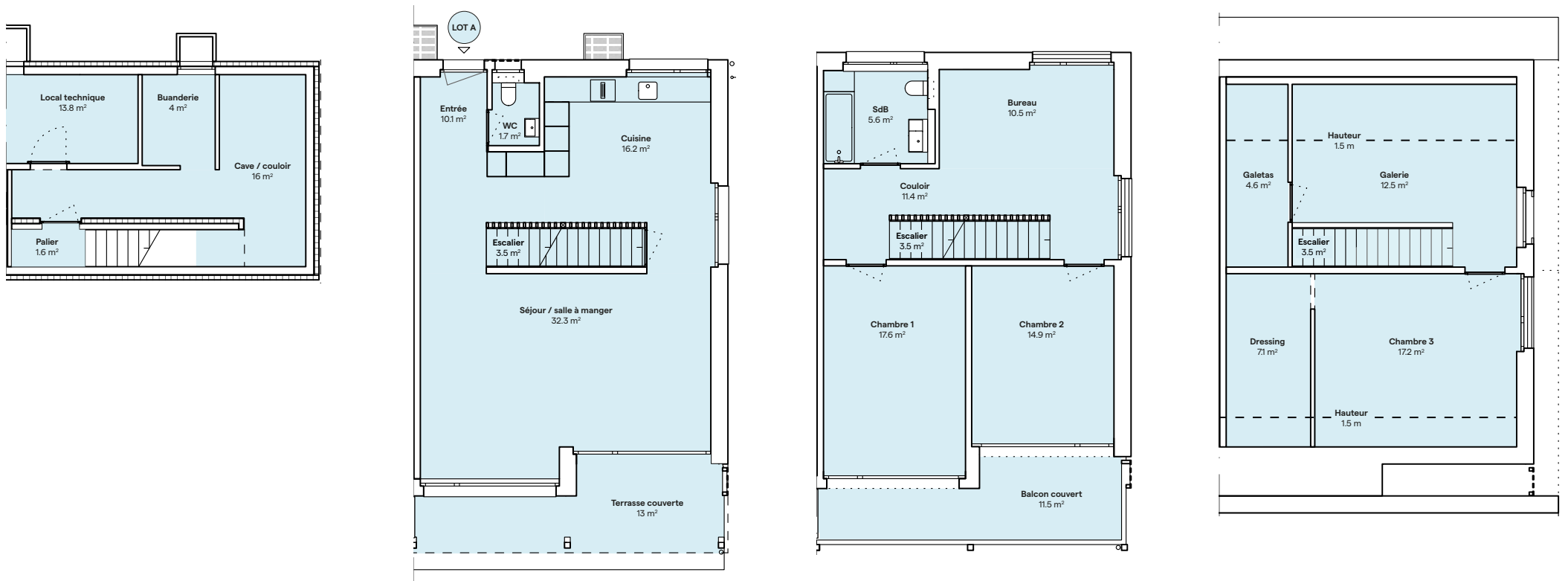
**Switzerland Sotheby's International Realty
(agence de Neuchâtel)**

Rue des Chavannes 3
2000 Neuchâtel

Tél. +41 32 722 62 80
www.switzerland-sothebysrealty.ch

www.switzerland-sothebysrealty.ch

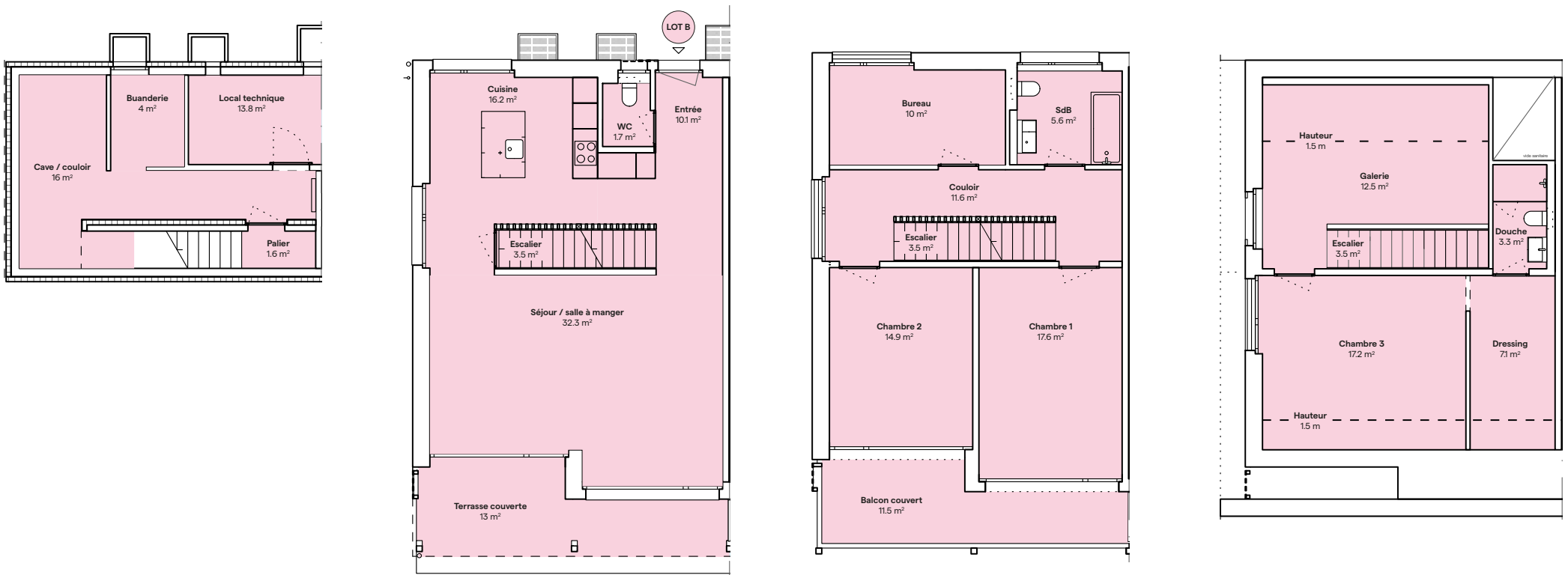
Prêles Chasseral



Lot	Nombre de pièces	Orientation	Surface habitable	Surface utile	Surface balcon	Surface terrasse	Surface parcelle	Surface cave
A	5.5	S-E	173 m ²	190 m ²	11.5 m ²	13 m ²	591 m ²	20 m ²

* Les surfaces de vente sont calculées ainsi :
 - Les m² habitables sont calculés à l'intérieur des murs extérieurs
 - Les balcons pour 1/2
 - Les terrasses pour 1/3
 - Les surfaces des jardins ne sont pas comptées dans la surface de vente des lots

Prêles Chasseral



Lot	Nombre de pièces	Orientation	Surface habitable	Surface utile	Surface balcon	Surface terrasse	Surface parcelle	Surface cave
B	5.5	S-O	173 m ²	190 m ²	11.5 m ²	13 m ²	603 m ²	20 m ²

* Les surfaces de vente sont calculées ainsi :
 - Les m² habitables sont calculés à l'intérieur des murs extérieurs
 - Les balcons pour 1/2
 - Les terrasses pour 1/3
 - Les surfaces des jardins ne sont pas comptées dans la surface de vente des lots