



RESIDENCE DU LEVANT
DORÉNAZ



Switzerland

Sotheby's
INTERNATIONAL REALTY

Switzerland | **Sotheby's**
INTERNATIONAL REALTY

The Commune	4
The Project	5
Situation	6
Construction	8
Gallery	9
Technical data	13
Contact	14

The Commune

Nested between the Rhone River and the cliffs of the Valais, Dorénaz offers a pace of life that's both authentic and serene. Here, time seems to flow gently, to the rhythm of the seasons, in the alpine light and intimacy of a place true to itself.

The essence of Dorénaz lies in this sense of belonging: a life where family, community and nature unite in a discreet and precious serenity.

The village draws its strength from its community spirit. Children get to school safely, residents greet each other naturally, and the village square becomes a meeting point where life simply flourishes.

Families find a real sense of belonging here, not through the grandeur of the place, but through the warmth of shared moments and the continuity of traditions.

Every detail - the sound of bells, the movement of vineyards, the stillness of winter mornings - contributes to a rare harmony, where modernity and nature coexist in balance.



Bus stop nearby



School in the heart of the village



Various restaurants within walking distance



The Project

The Résidence du Levant is more than just a collection of villas: it's a neighborhood conceived as a coherent whole, where each house is part of a common architectural language - contemporary, elegant, discreet. Uncluttered volumes respond to each other, creating a refined, harmonious whole.

The project offers 14 spacious villas, ranging in size from 130 m² to 152 m², each with a terrace of around 20 m². Conceived to sublimate its alpine setting, the design combines balanced proportions and noble materials.

White facades contrast with dark roofs, giving the neighborhood a modern, timeless rhythm. Private gardens, panoramic terraces and unobstructed views ensure individual privacy while preserving the unity of the site.

Here, architecture dialogues with the landscape. Quiet, safe streets invite you to walk or cycle, to slow down and savour

every moment. The alignment of the houses creates a natural, harmonious order, far from monotony.

The Résidence du Levant offers more than a home: it's an art of living. Private spaces mingle with the spirit of community, and each day unfolds with fluidity, carried by a design thought out for comfort and serenity.

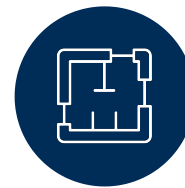
A place where you feel at home, while belonging to a contemporary, elegant and refined Alpine community.



Modern and contemporary architecture



Quiet, green surroundings



Generous space and volume



Situation

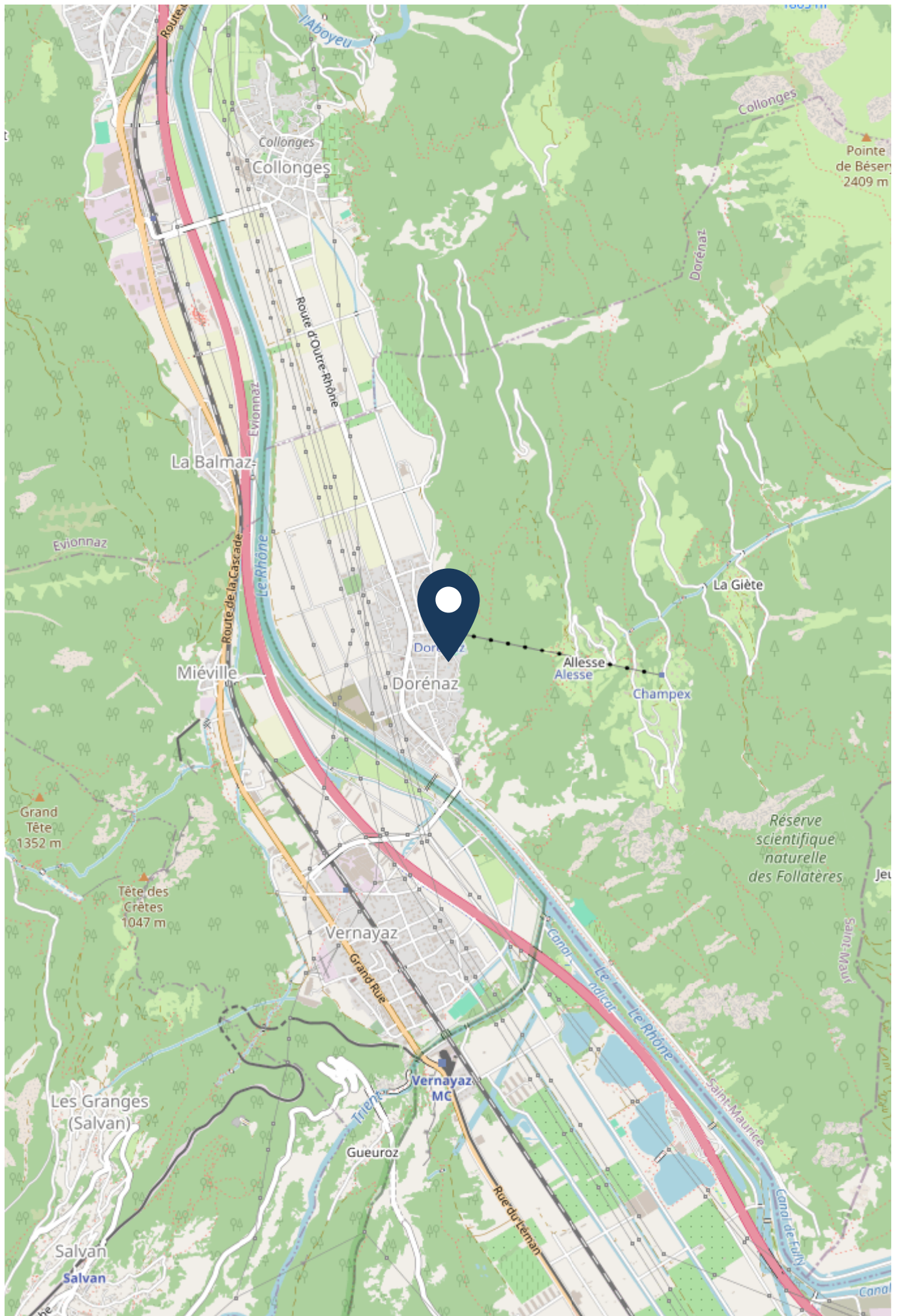
Nested in the heart of Dorénaz, between valleys and forests, Résidence du Levant reinvents alpine living. Each villa combines modernity and nature, light and noble materials, offering spaces designed to relax, gather and enjoy every moment.

Here, architecture is not limited to the facades: it dialogues with the landscape, reflects the spirit of the village and celebrates the elegant simplicity of Alpine traditions.

Stone and wood create warmth and permanence, bright interiors invite serenity, and every detail - from refined finishes to discreet technologies - puts comfort at the service of everyday life.

More than a neighborhood, Résidence du Levant is an experience: a place where intimacy and community meet, where nature and design meet, and where living becomes

an art. Dorénaz, reinvented for those who wish to enjoy contemporary alpine living in all its beauty and serenity.



Construction

Every detail of the Résidence du Levant reflects a perfect balance between modernity and nature. Mineral-toned facades, contrasting with dark roofs, punctuate the neighborhood like the shadows and cliffs of the Valais, in a subtle yet assertive language. Here, architecture doesn't impose itself: it dialogues with the landscape, as if shaped by the same forces that sculpt the valley.

In the interior, noble materials create a unique sensory experience. Natural wood flooring warms rooms and recalls the presence of Alpine forests, while smooth, tactile surfaces invite the touch as much as the gaze.

Refined finishes and soft hues catch the light with elegance, transforming every moment into one of serenity.

Each choice of material tells a story: the grain of oak, the softness of a textile, the clarity of stone - everything contributes to an environment where essence takes precedence over decoration.

Light becomes an actor in its own right, sculpting spaces, softening shadows and instilling calm and balance.

The result? A place where modernity and Alpine tradition meet, where each home is intimate yet part of an overall harmony.

La Résidence du Levant is not just a neighborhood: it's a living experience, where elegance, comfort and Alpine spirit coexist in discreet but unforgettable perfection.



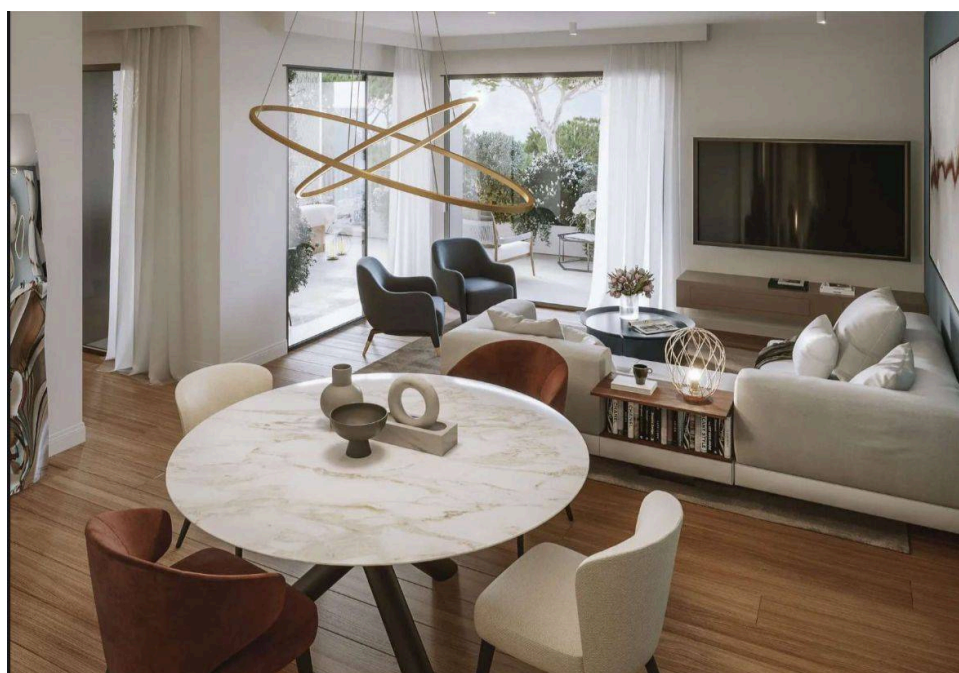
Choice of finishes at purchaser's discretion



Air-to-water heat pump



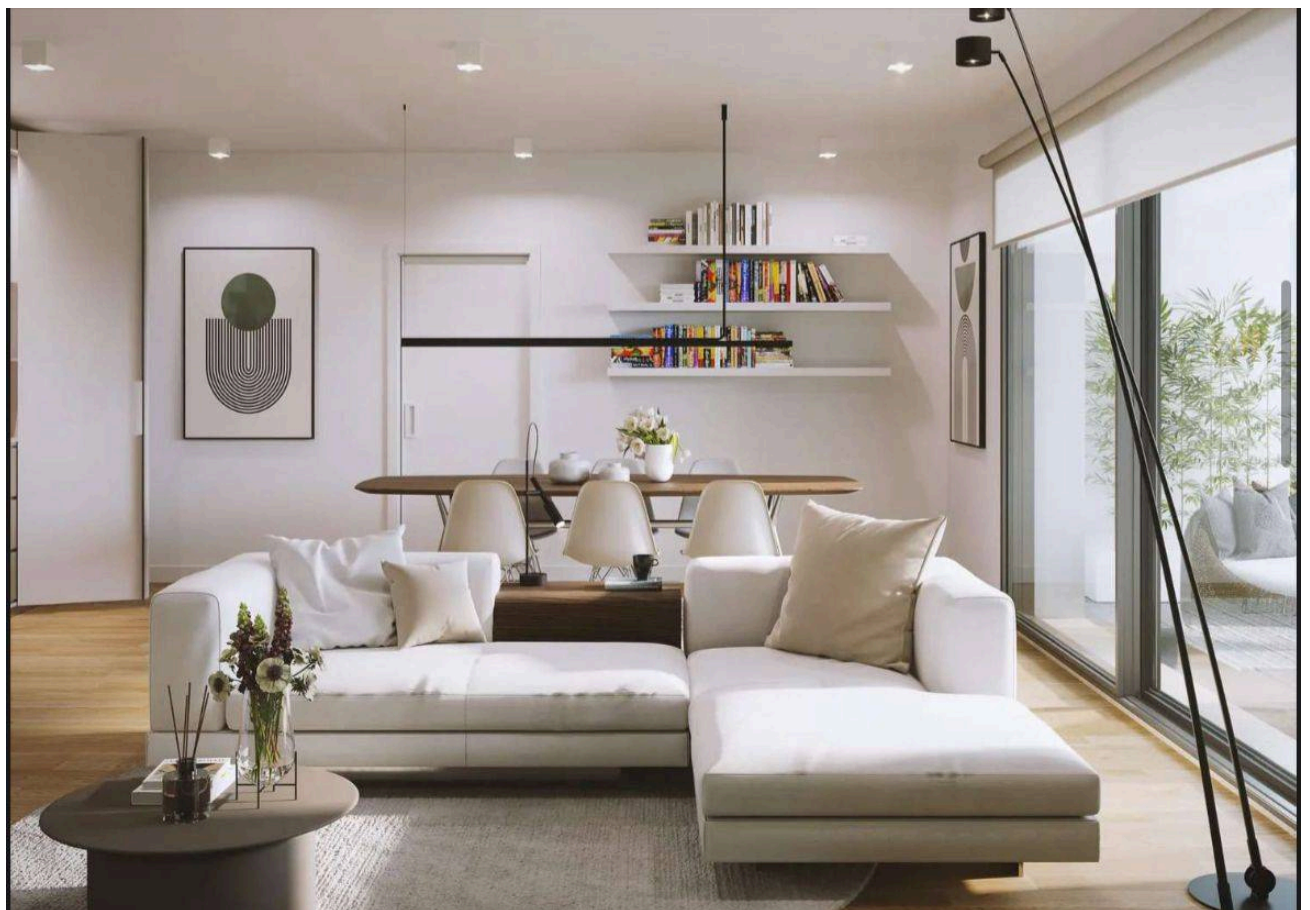
Photovoltaic solar panels



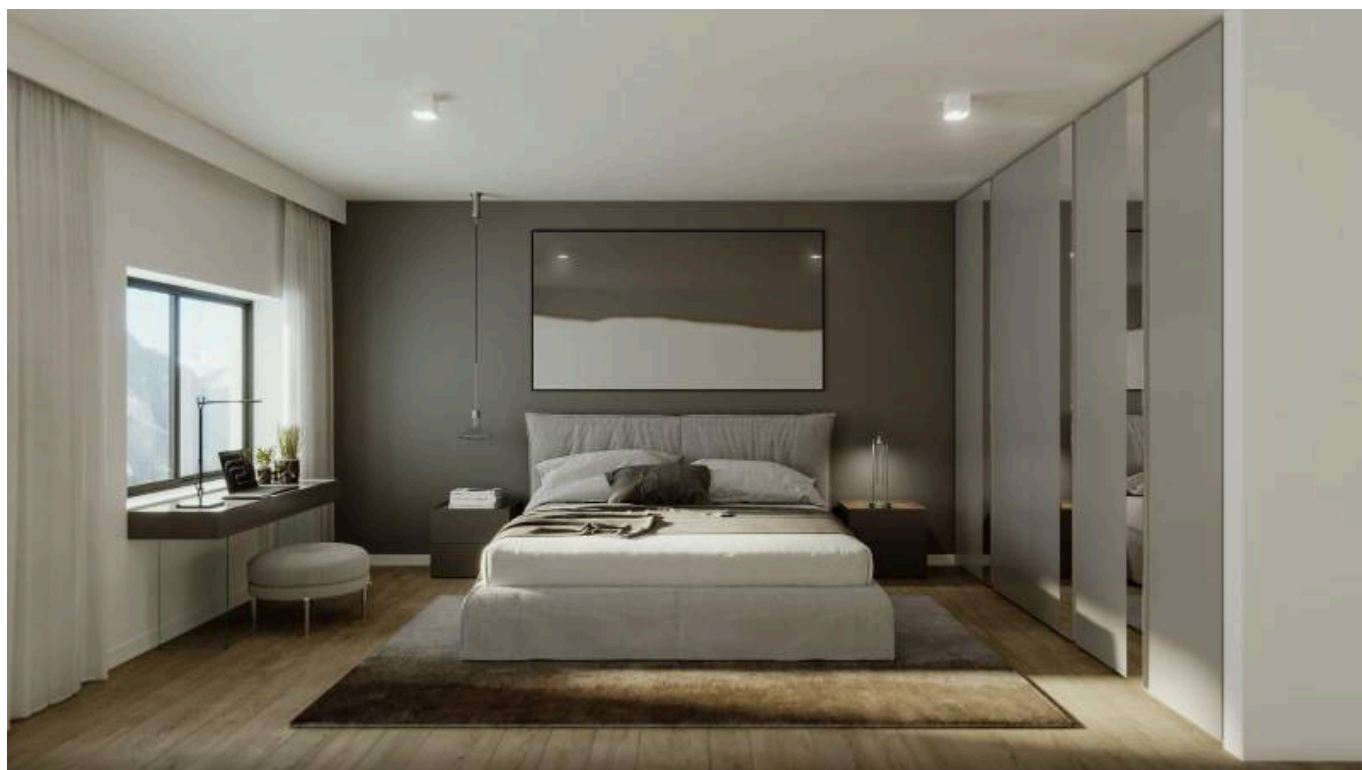
Galerie



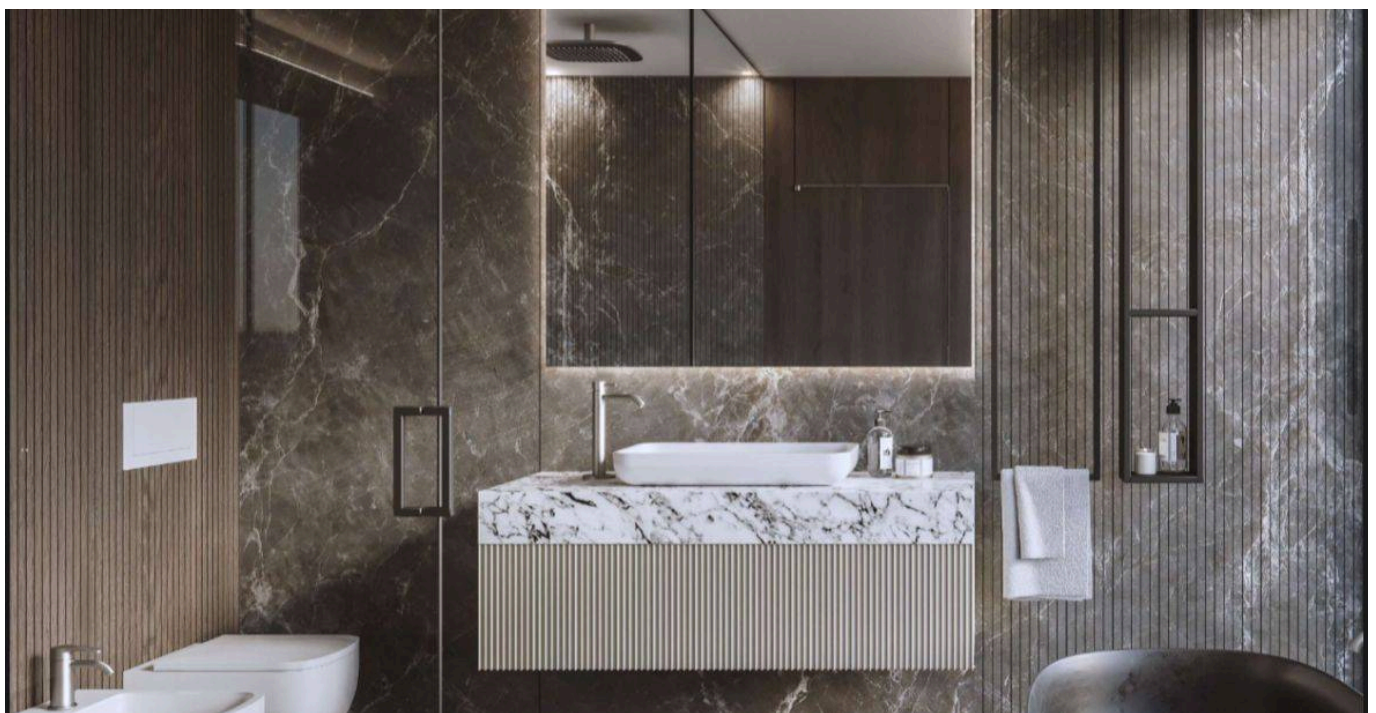
Galerie



Galerie



Galerie



Contact



Pedro Domingues
+41 79 542 80 51
pedro.domingues@swsir.ch

**Switzerland Sotheby's International Realty (agence
du Chablais)**

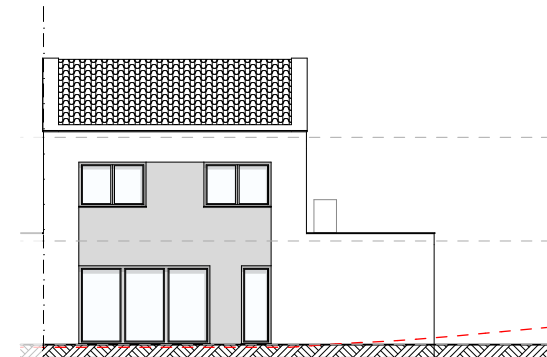
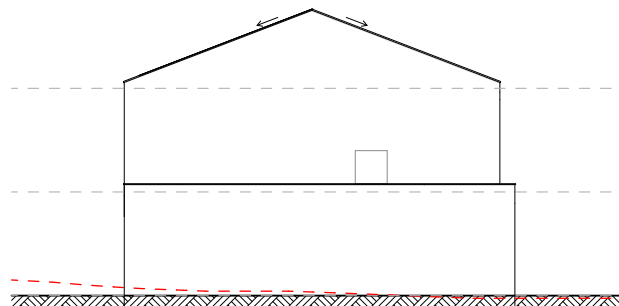
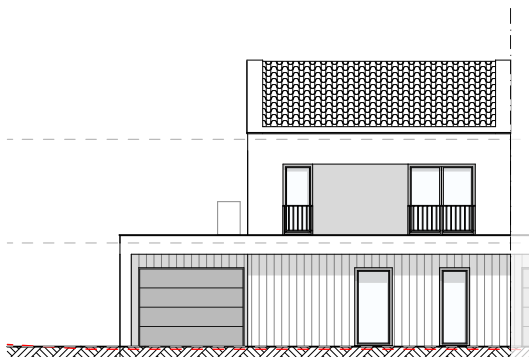
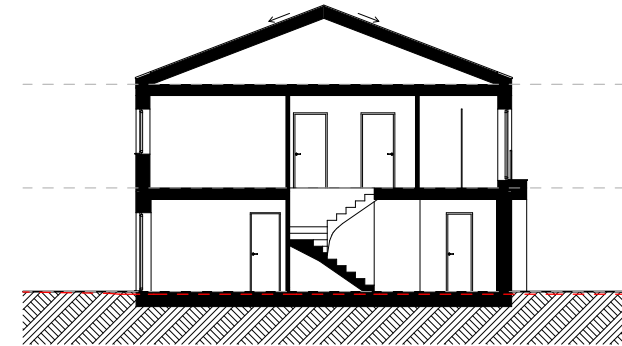
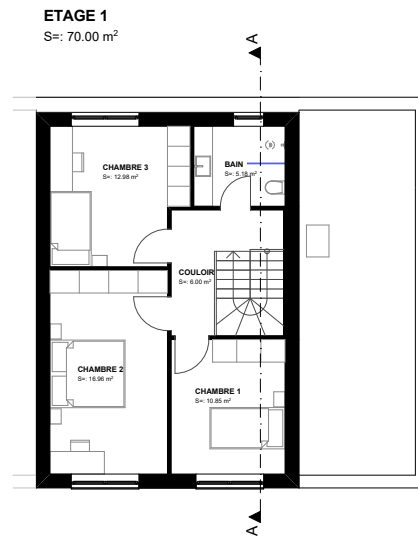
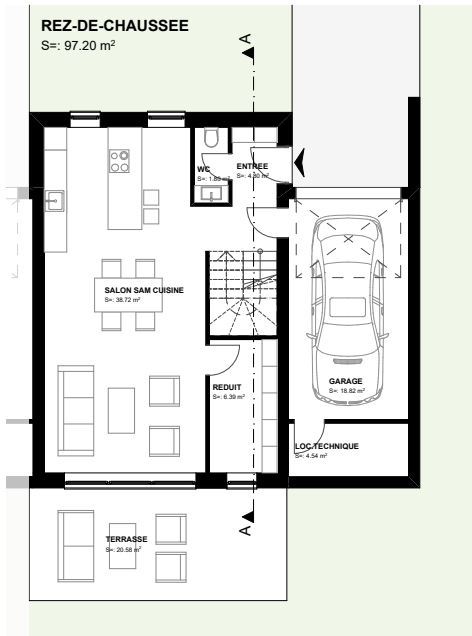
Rue du Théâtre 7 bis
1820 Montreux

Tél.+41 21 962 86 62

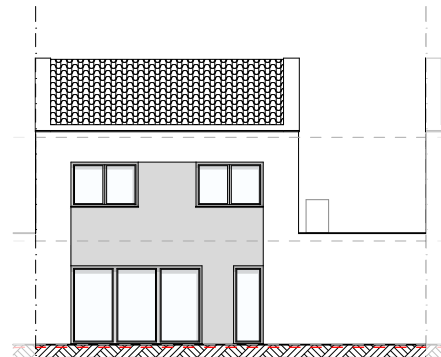
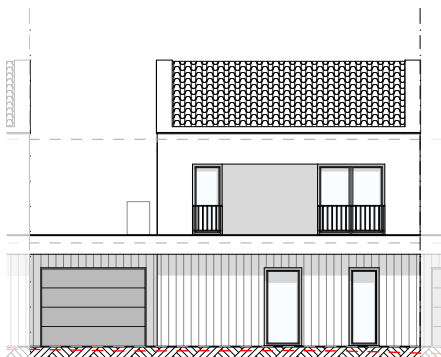
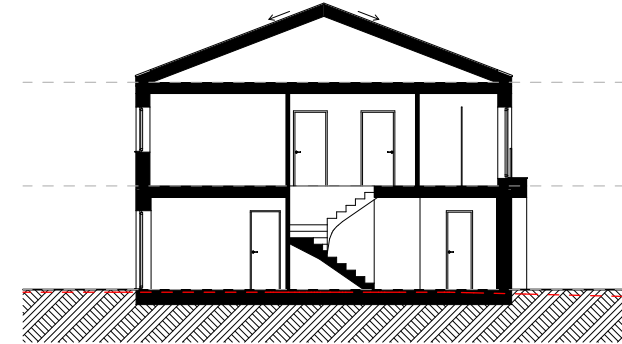
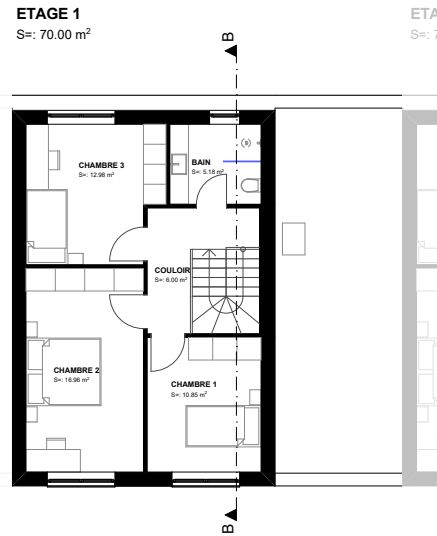
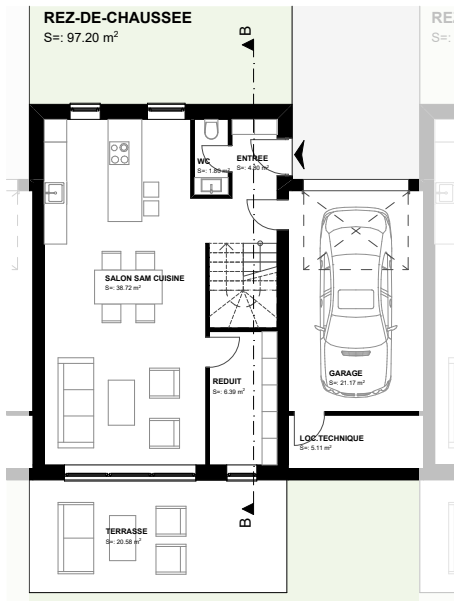
www.switzerland-sothebysrealty.ch

www.residence-levant.ch

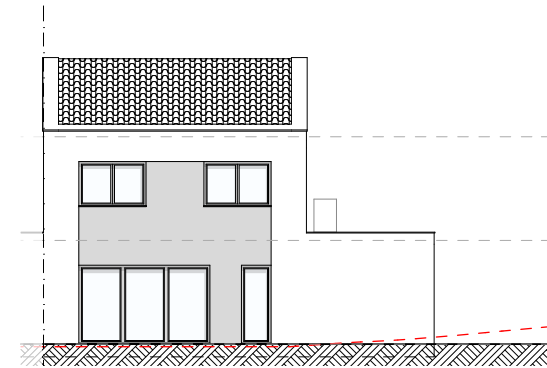
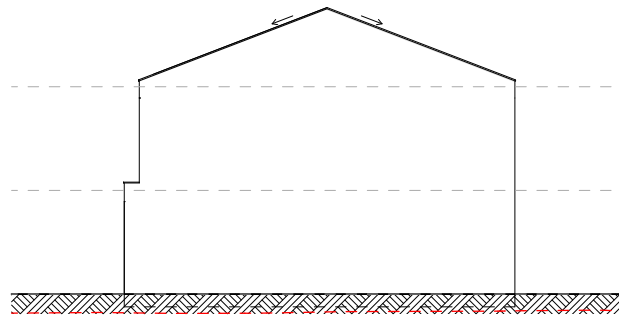
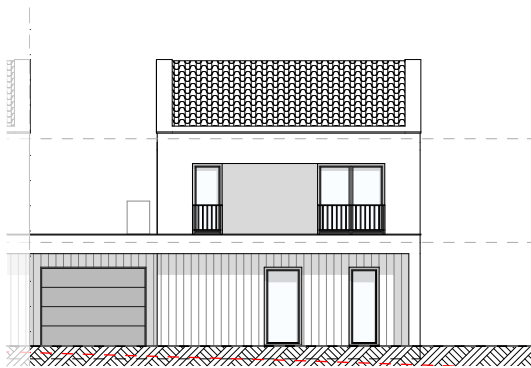
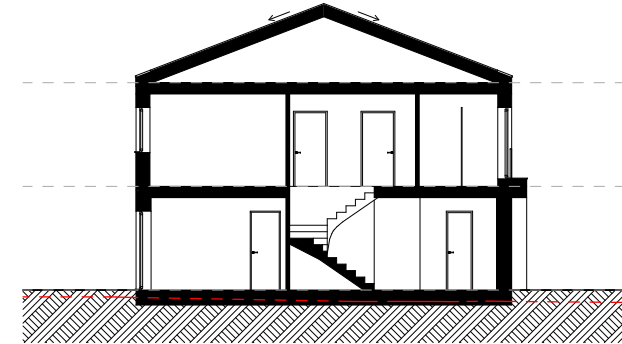
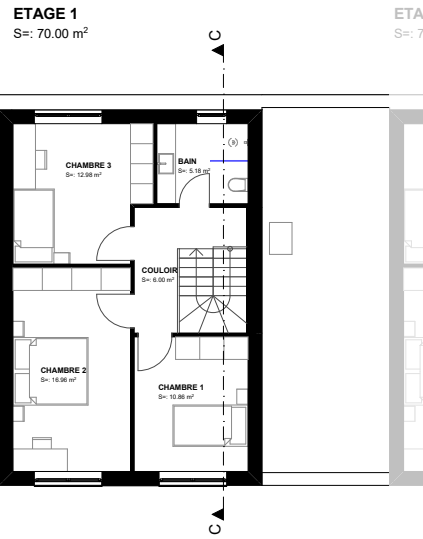
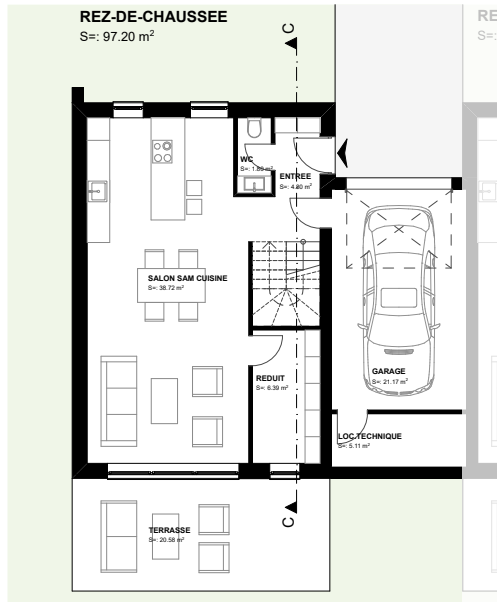




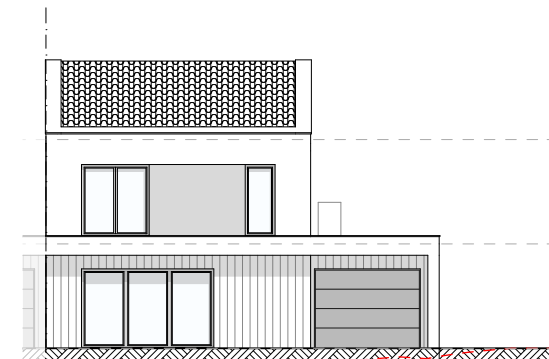
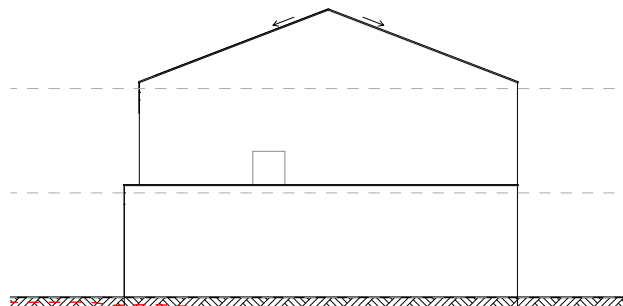
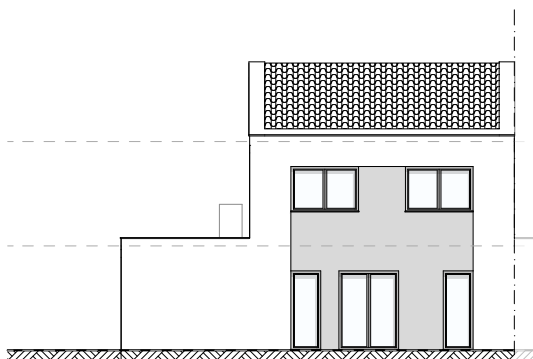
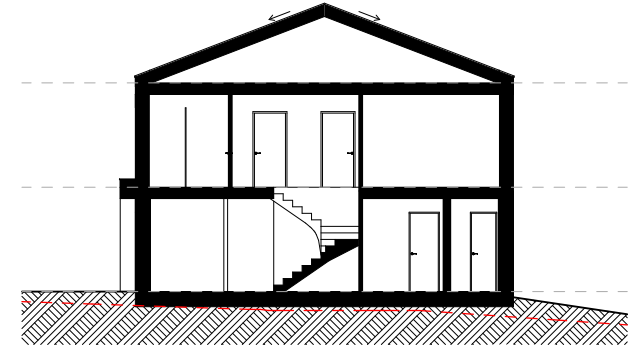
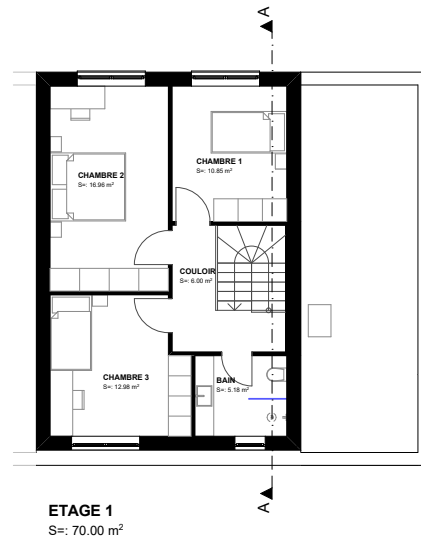
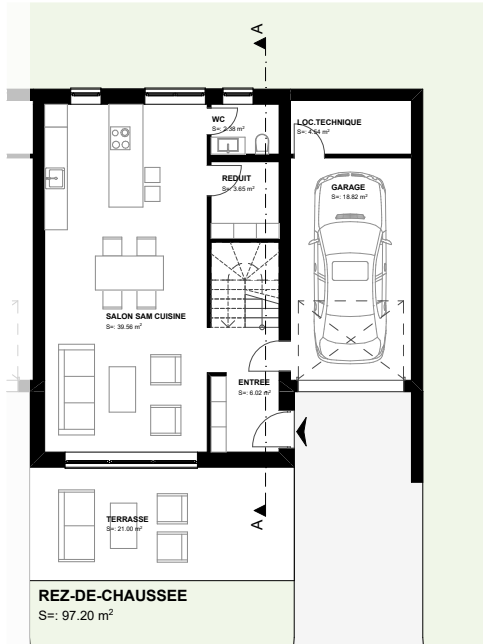
Lot	Nombre de pièces	Orientation	Surface jardin	Surface terrasse	Surface villa
1	4.5	S	151.2 m ²	20.6 m ²	167.2 m ²



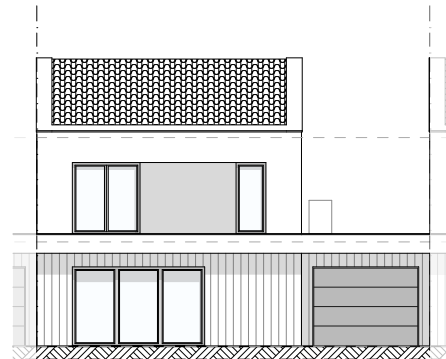
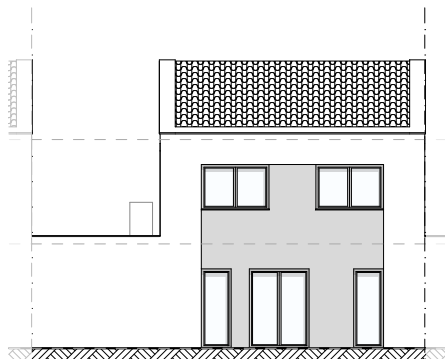
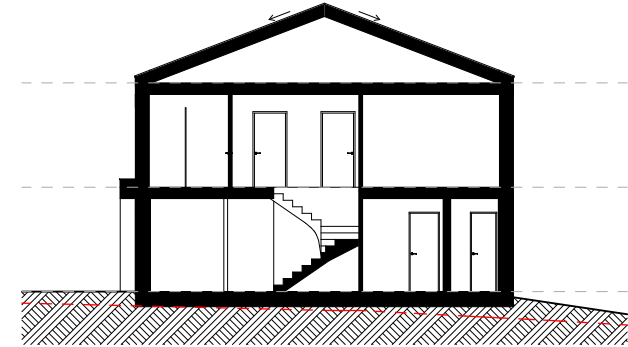
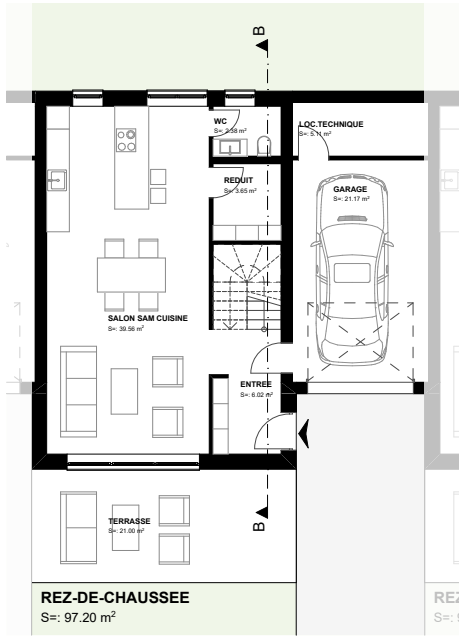
Lot	Nombre de pièces	Orientation	Surface jardin	Surface terrasse	Surface villa
2	4.5	S	43.2 m ²	20.6 m ²	167.2 m ²



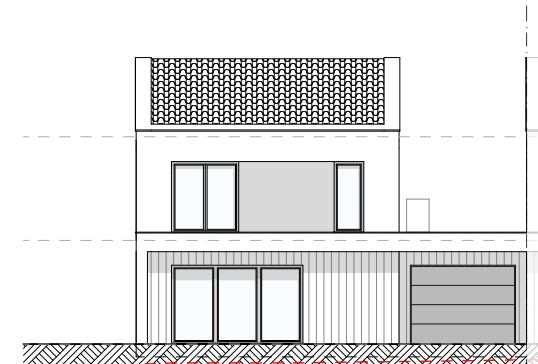
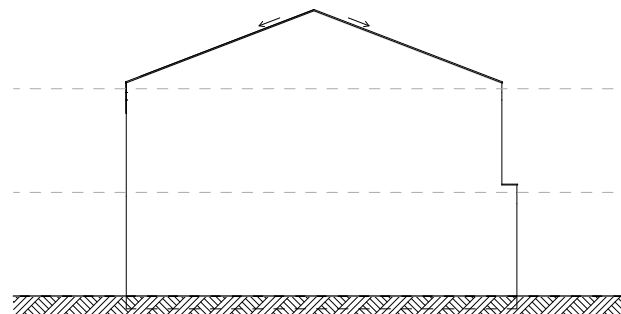
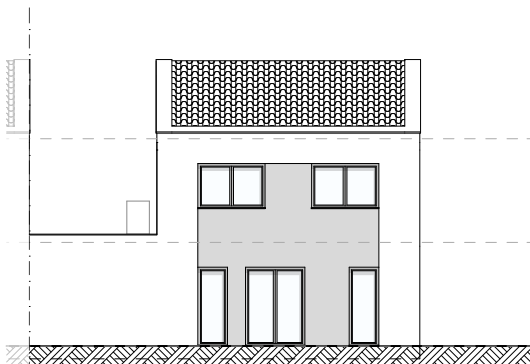
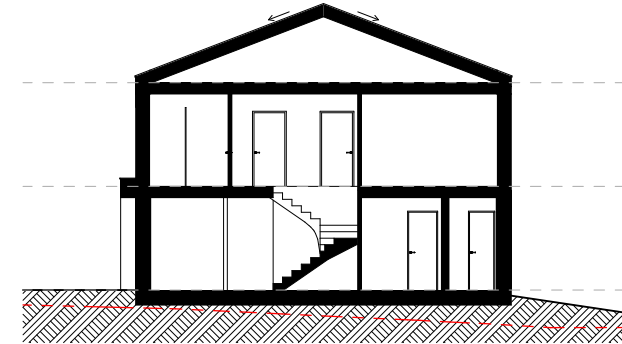
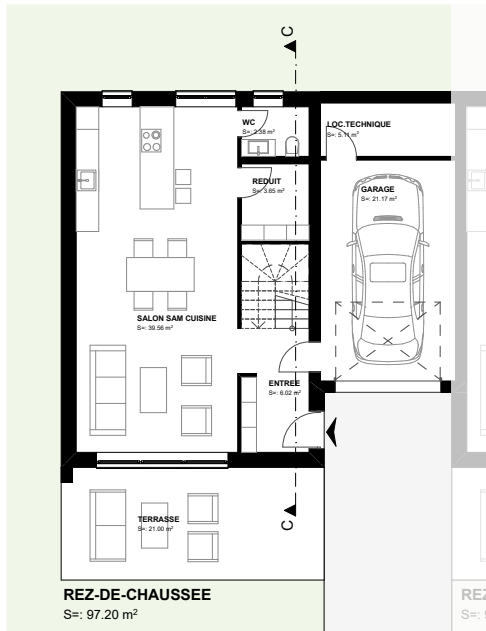
Lot	Nombre de pièces	Orientation	Surface jardin	Surface terrasse	Surface villa
3	4.5	S	144.9 m ²	20.6 m ²	167.2 m ²



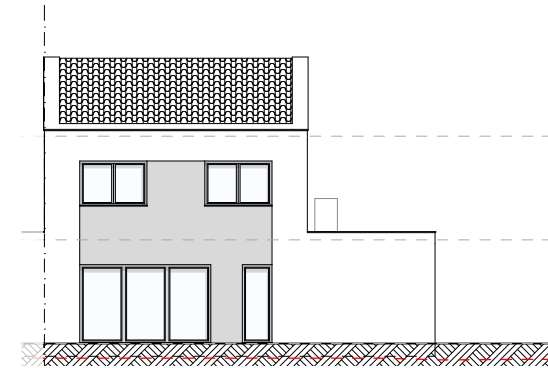
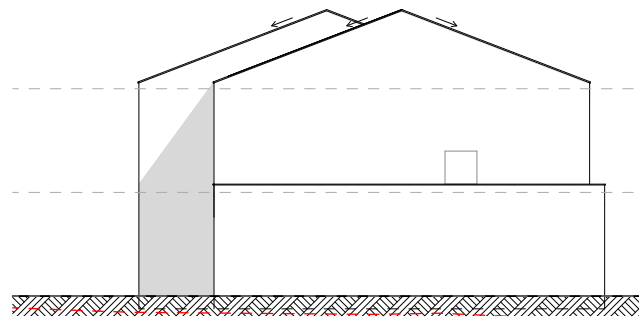
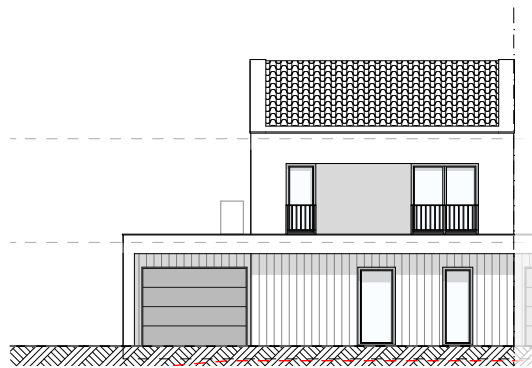
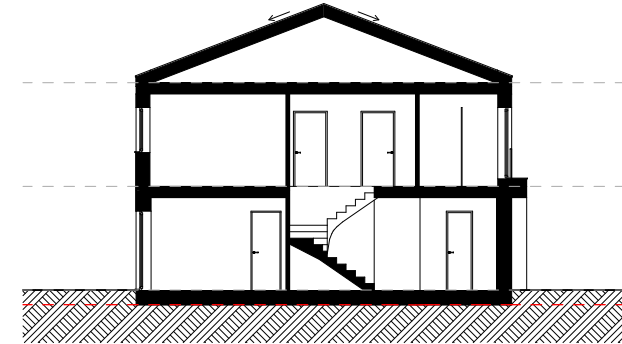
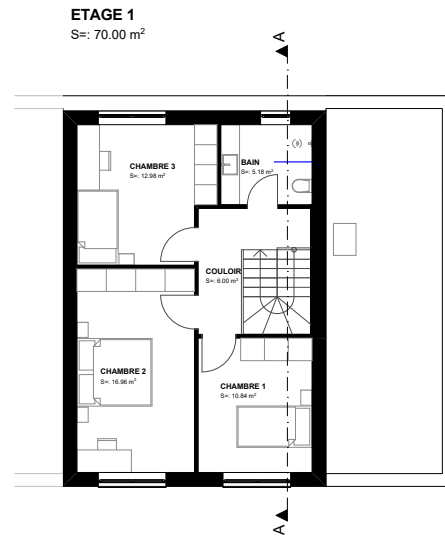
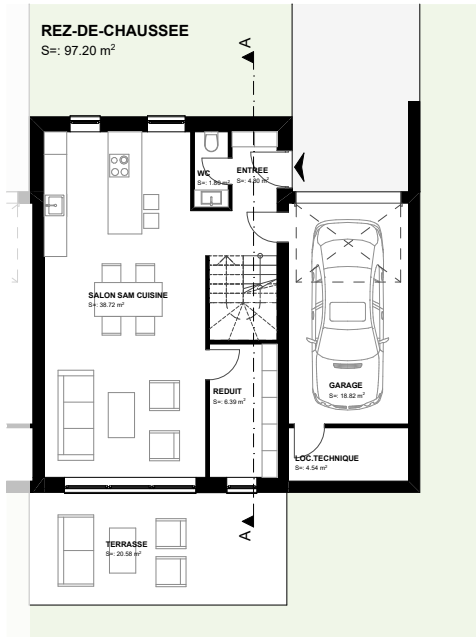
Lot	Nombre de pièces	Orientation	Surface jardin	Surface terrasse	Surface villa
4	4.5	S	1441 m ²	21 m ²	167.2 m ²



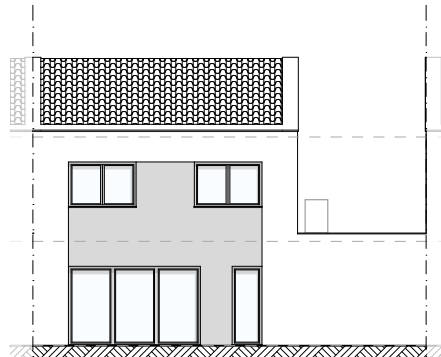
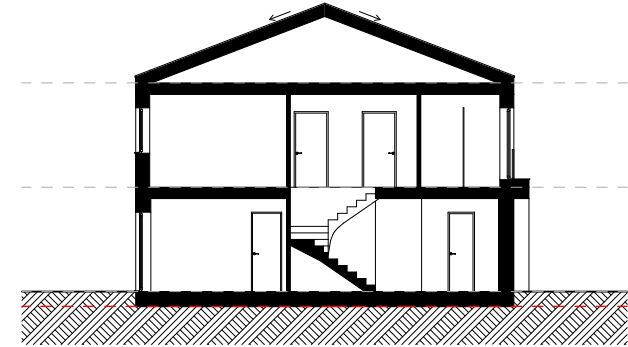
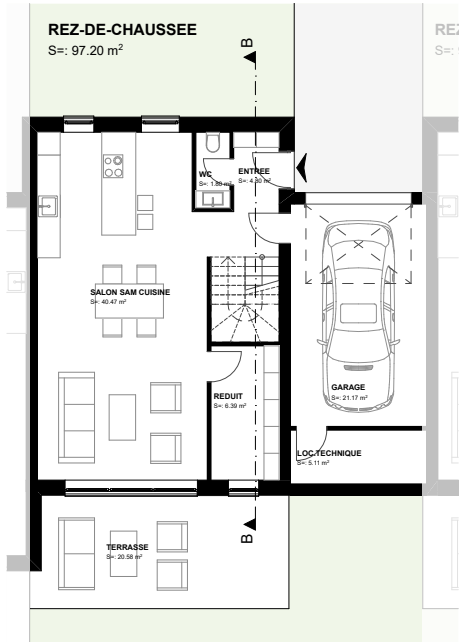
Lot	Nombre de pièces	Orientation	Surface jardin	Surface terrasse	Surface villa
5	4.5	S	27.6 m ²	21 m ²	167.2 m ²



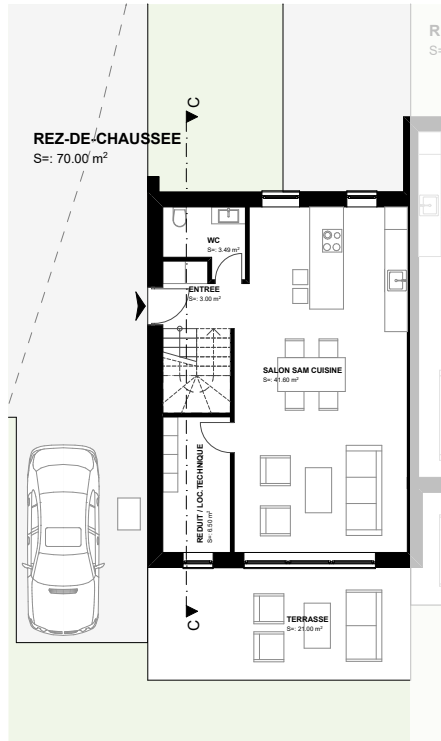
Lot	Nombre de pièces	Orientation	Surface jardin	Surface terrasse	Surface villa
6	4.5	S	159.6 m ²	21 m ²	167.2 m ²



Lot	Nombre de pièces	Orientation	Surface jardin	Surface terrasse	Surface villa
7	4.5	S	165.5 m ²	21 m ²	167.2 m ²

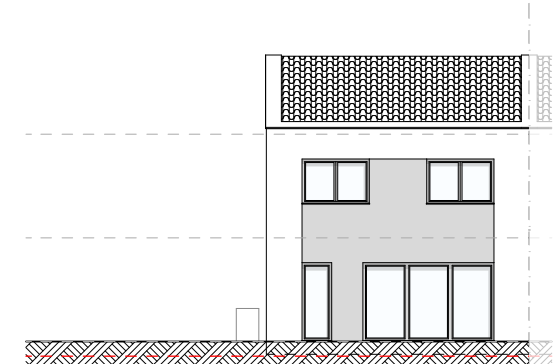
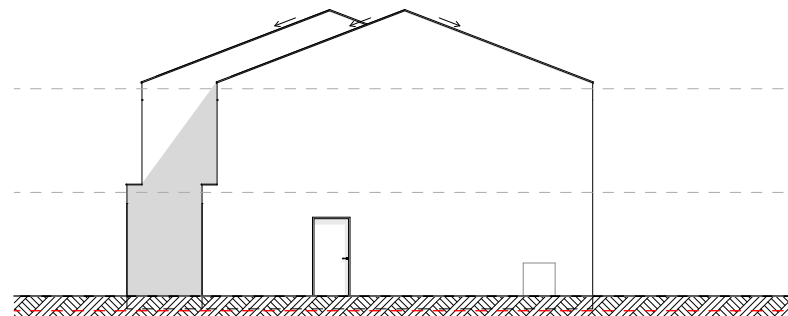
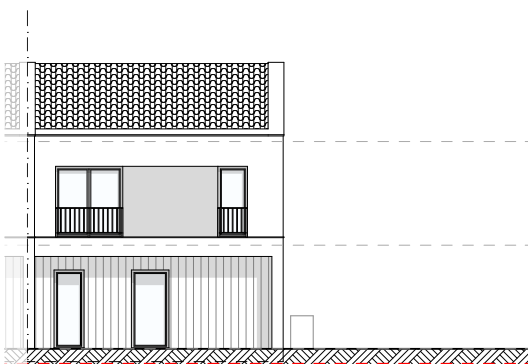
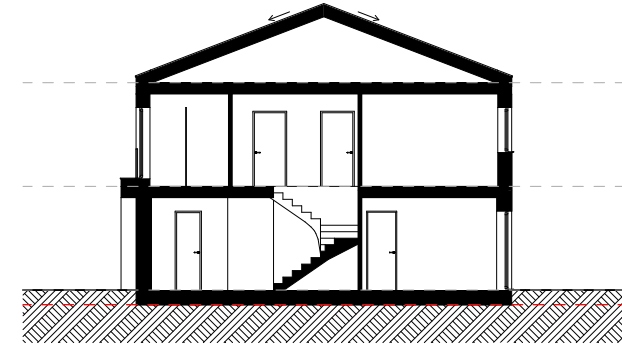
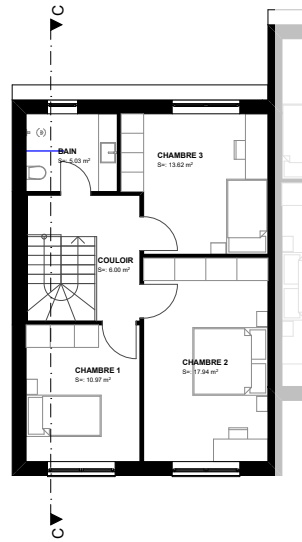


Lot	Nombre de pièces	Orientation	Surface jardin	Surface terrasse	Surface villa
8	4.5	S	43.6 m ²	20.6 m ²	167.2 m ²

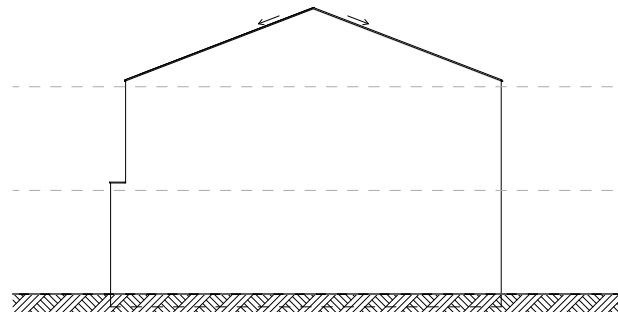
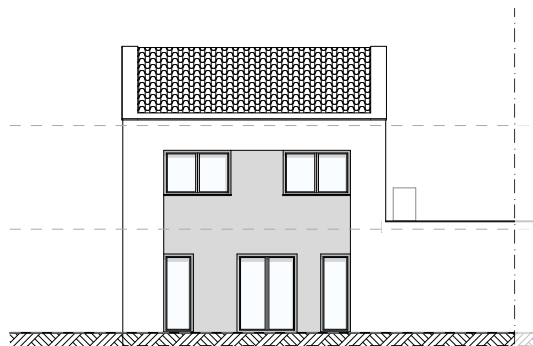
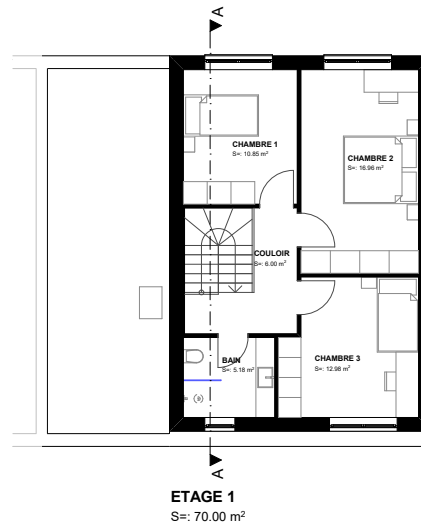


ETAGE 1
S=: 70.00 m²

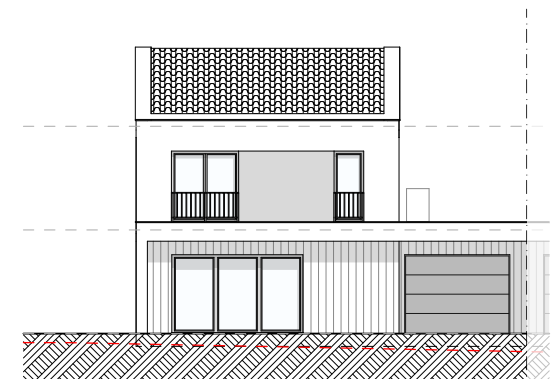
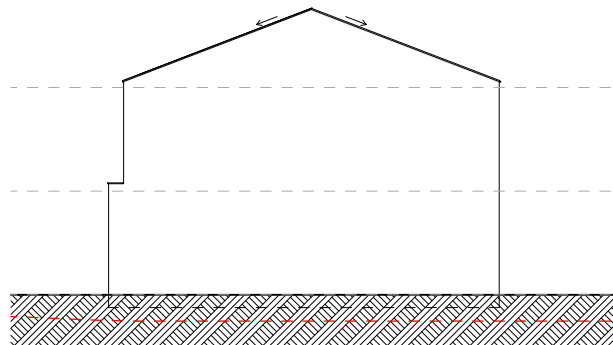
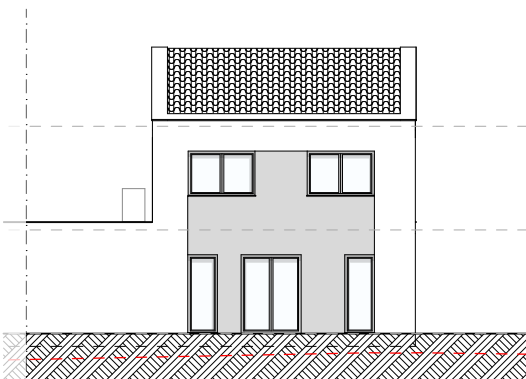
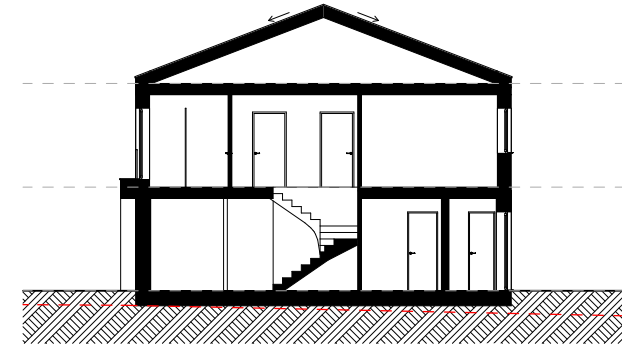
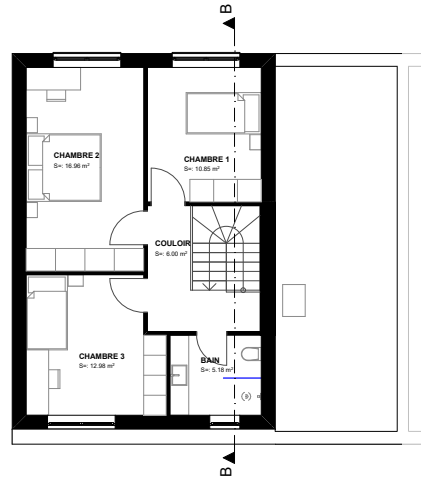
ETA
S=: 70



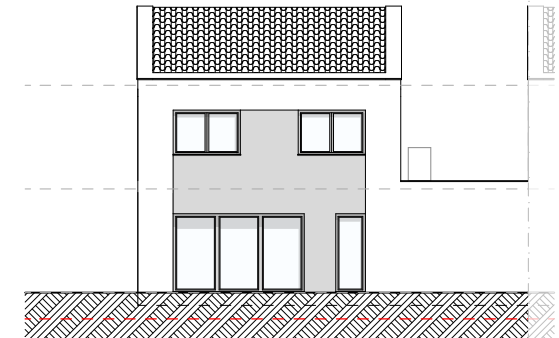
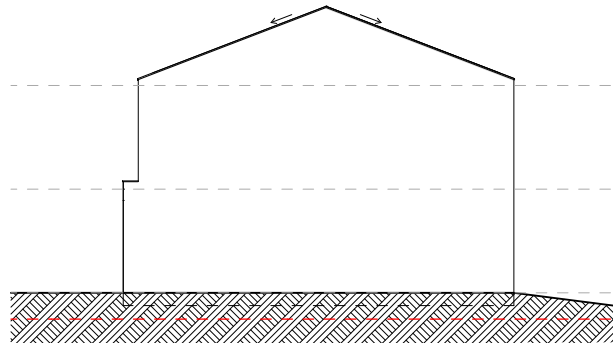
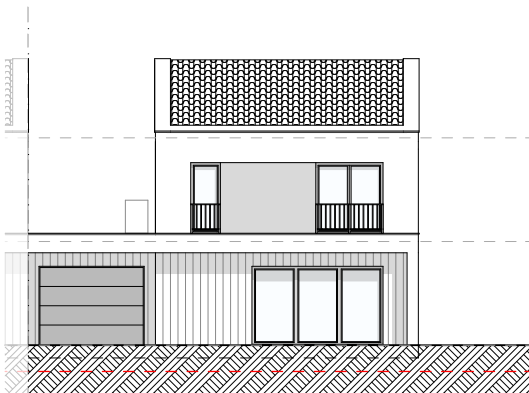
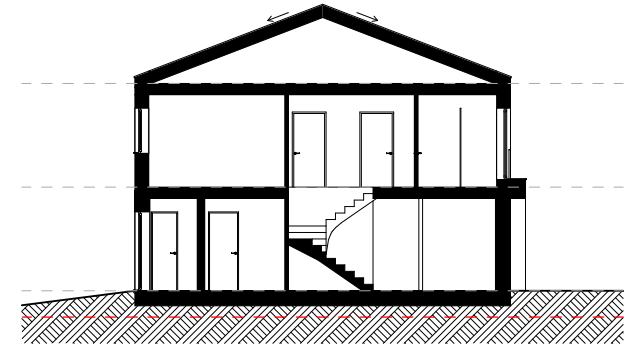
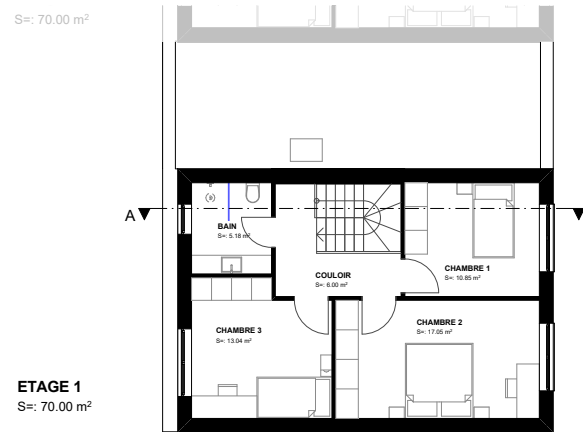
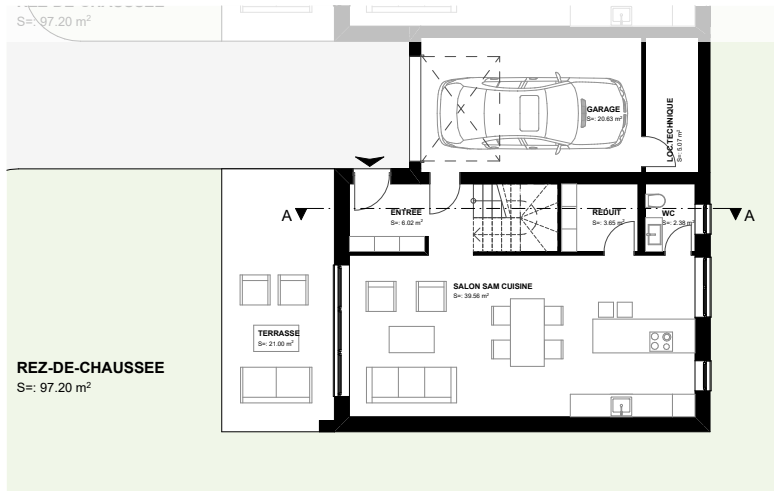
Lot	Nombre de pièces	Orientation	Surface jardin	Surface terrasse	Surface villa
9	4.5	S	165.5 m ²	21 m ²	140 m ²



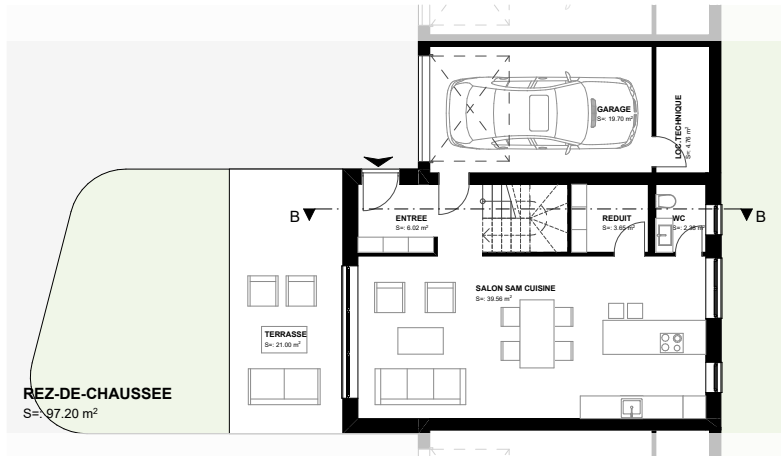
Lot	Nombre de pièces	Orientation	Surface jardin	Surface terrasse	Surface villa
10	4.5	S	140.9 m ²	21 m ²	167.2 m ²



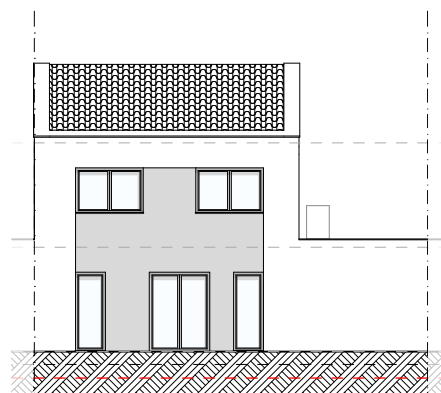
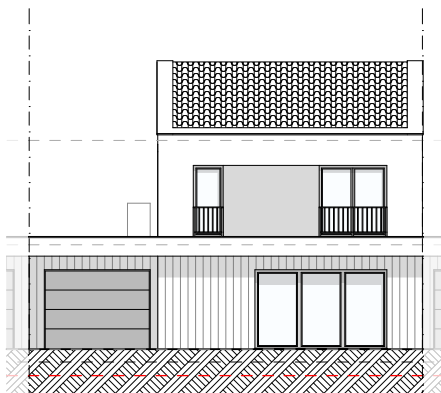
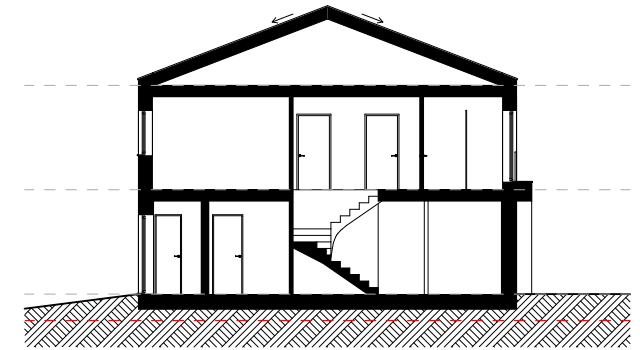
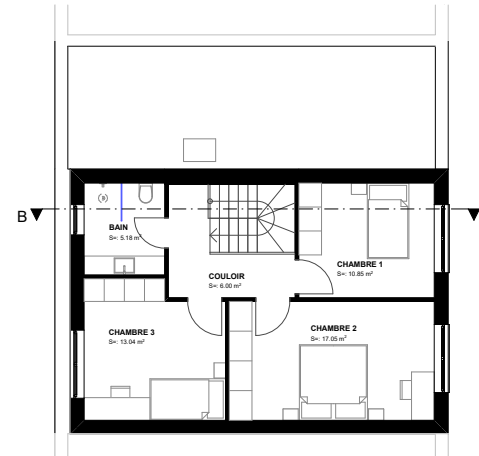
Lot	Nombre de pièces	Orientation	Surface jardin	Surface terrasse	Surface villa
11	4.5	S	188.7 m ²	21 m ²	167.2 m ²



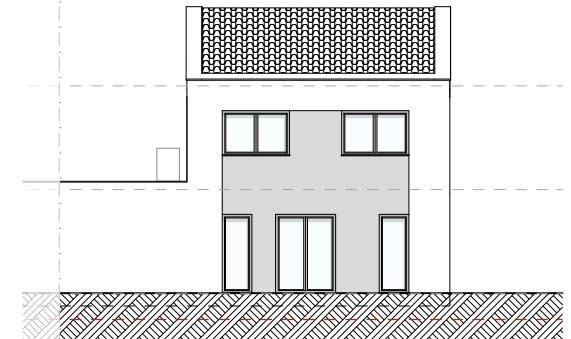
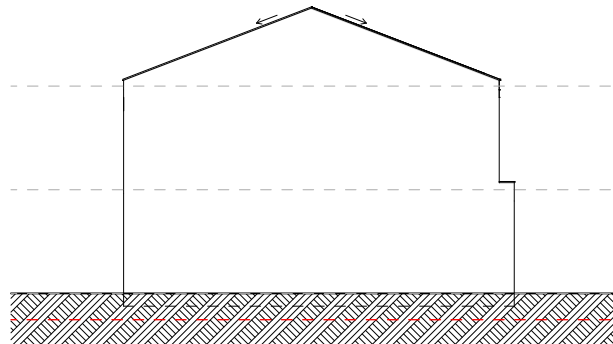
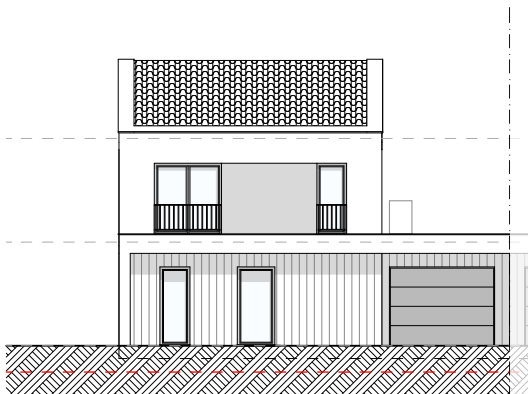
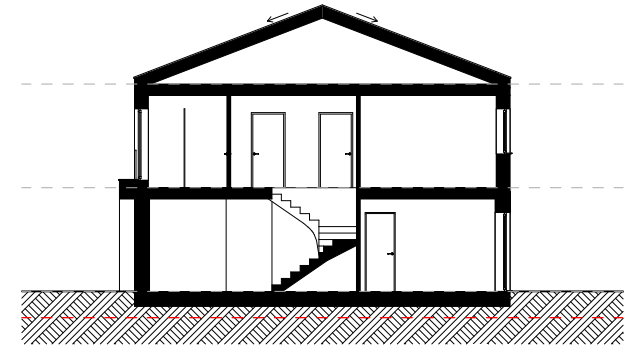
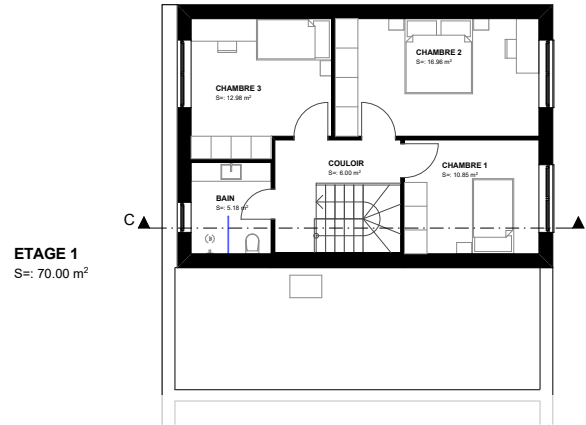
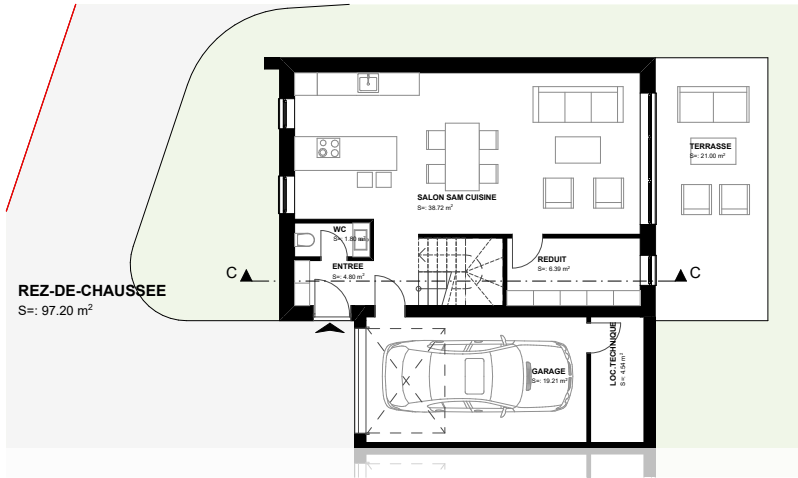
Lot	Nombre de pièces	Orientation	Surface jardin	Surface terrasse	Surface villa
12	4.5	O	2071 m ²	21 m ²	167.2 m ²



ETAGE 1
S= 70.00 m²



Lot	Nombre de pièces	Orientation	Surface jardin	Surface terrasse	Surface villa
13	4.5	O	86.2 m ²	21 m ²	167.2 m ²



Lot	Nombre de pièces	Orientation	Surface jardin	Surface terrasse	Surface villa
14	4.5	E	157.9 m ²	21 m ²	167.2 m ²