

Vulliamma

 MURIST



Switzerland

Sotheby's
INTERNATIONAL REALTY

Switzerland | **Sotheby's**
INTERNATIONAL REALTY

The Commune	4
The Project	5
Situation	6
Construction	8
Gallery	9
Technical data	15
Contact	16

The Commune

Located on the southern shore of Lake Neuchâtel, Murist is part of the Estavayer commune. Combining an unspoilt natural setting with quality of life, it offers an ideal balance between tranquility and access to modern infrastructure.

Murist's elementary school, kindergarten and nursery make life easier for families. Secondary school pupils continue their education in Estavayer, Domdidier or Cugy.

The Commune offers a wide range of sporting and cultural activities, including a climbing gym, a water ski lift, a riding school and a rowing club. Nature lovers can enjoy hiking trails and a unique environment.



Bus stop nearby



Green environment



School in Estavayer-le-Lac



The Project

In **the heart of the village of Murist**, in a protected natural environment, the **VULLIAMA** real estate project offers you a harmonious living environment, where serenity and accessibility meet.

This exceptional project comprises 3 buildings linked by a shared parking lot, with a total of **42 apartments** ranging from **2.5 to 5.5 rooms**. Residents benefit from **54 underground parking spaces, 9 visitor spaces** and a **Mobility station**, promoting sustainable, flexible mobility.

Designed with the well-being of their occupants in mind, the apartments feature **modular architecture**, enabling living spaces to be adapted to your needs and desires.

Nestled in a green setting, the **VULLIAMA** residence combines **modernity, comfort and tranquillity**, offering an ideal living environment for those seeking the right balance between **nature and urban proximity**.

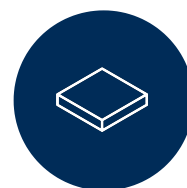
Murist is part of the municipality of Estavayer, a dynamic community with all the amenities you need for a comfortable daily life: schools, shops, sports and cultural facilities.



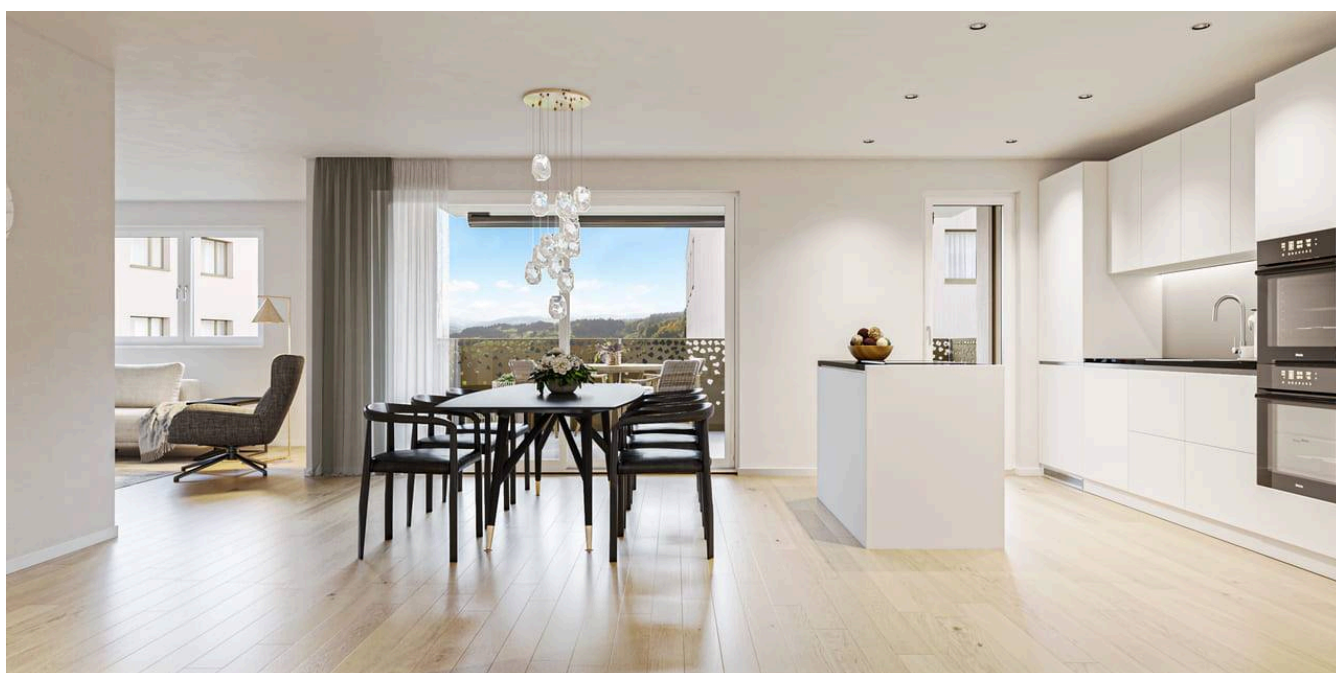
Modern and contemporary architecture



Quiet, green surroundings



Balcony or terrace for each unit

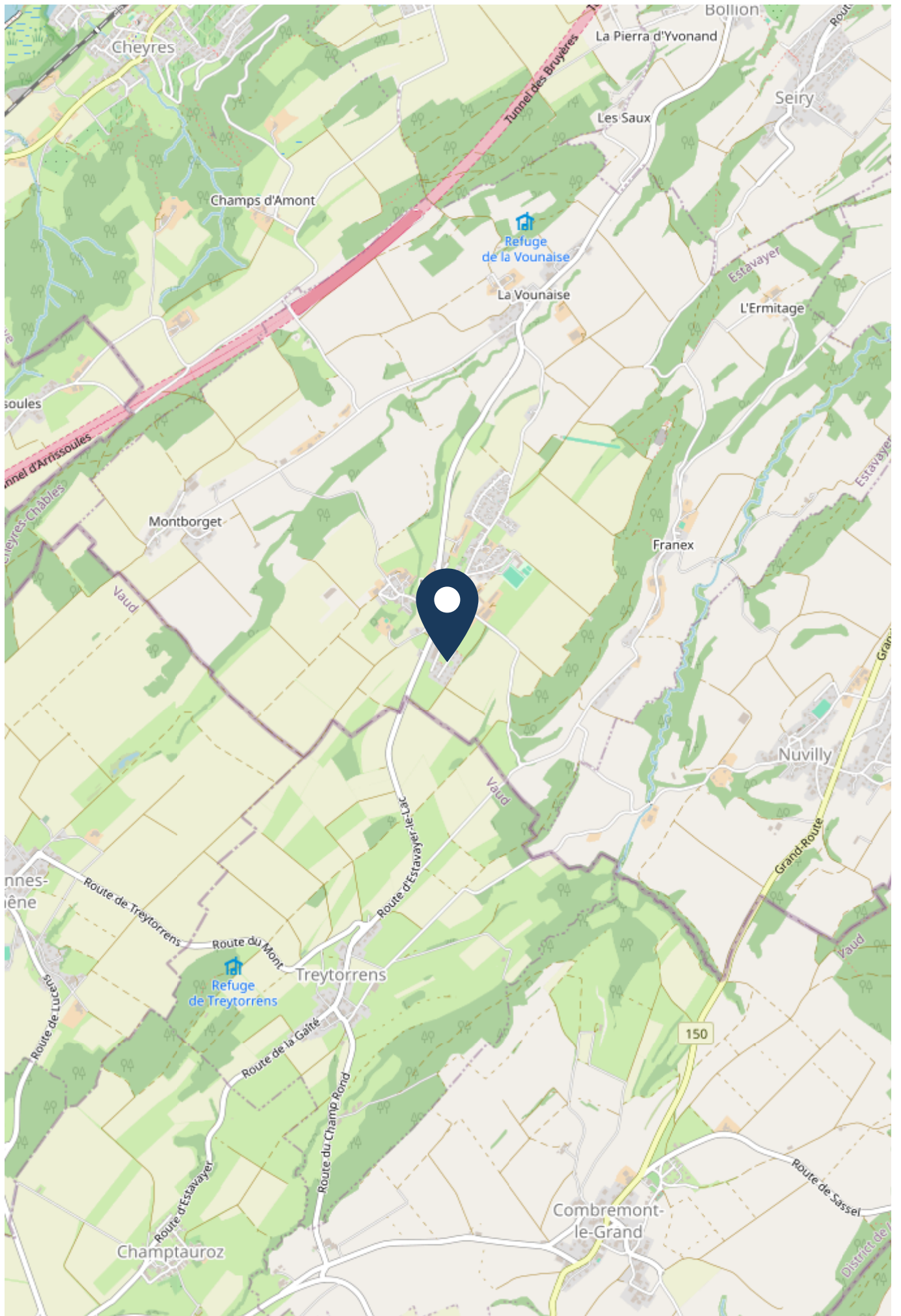


Situation

Living in Vuillama means enjoying a lifestyle that combines proximity to shops and the local economy, quality education and direct access to nature.

When it comes to shopping and medical services, everything you need is just 11 minutes from Murist, with supermarkets, convenience stores and healthcare facilities, including hospitals.

				
Airport	0 m	-	-	-
Bank	1.8 km	49 min	49 min	8 min
Gondola lift / ski lift	0 m	-	-	-
Highway	0 m	-	-	-
Nursery school	592 m	12 min	12 min	3 min
Post	821 m	14 min	14 min	3 min
Primary school	795 m	11 min	11 min	2 min
Public transport	377 m	5 min	5 min	1 min
Restaurants	2.0 km	51 min	58 min	8 min
Secondary school	7.6 km	108 min	29 min	11 min
Shops	639 m	9 min	9 min	2 min
Station	3.7 km	90 min	54 min	12 min



Construction

The project stands out for its contemporary architectural design. Customizable finishes give you the opportunity to create a space that reflects your image, with budgets and materials detailed in the technical specifications.

In terms of energy performance, the project meets current standards, including triple glazing, solar panels and underfloor heating.

Work is currently underway, with delivery of the apartments scheduled for 2026.



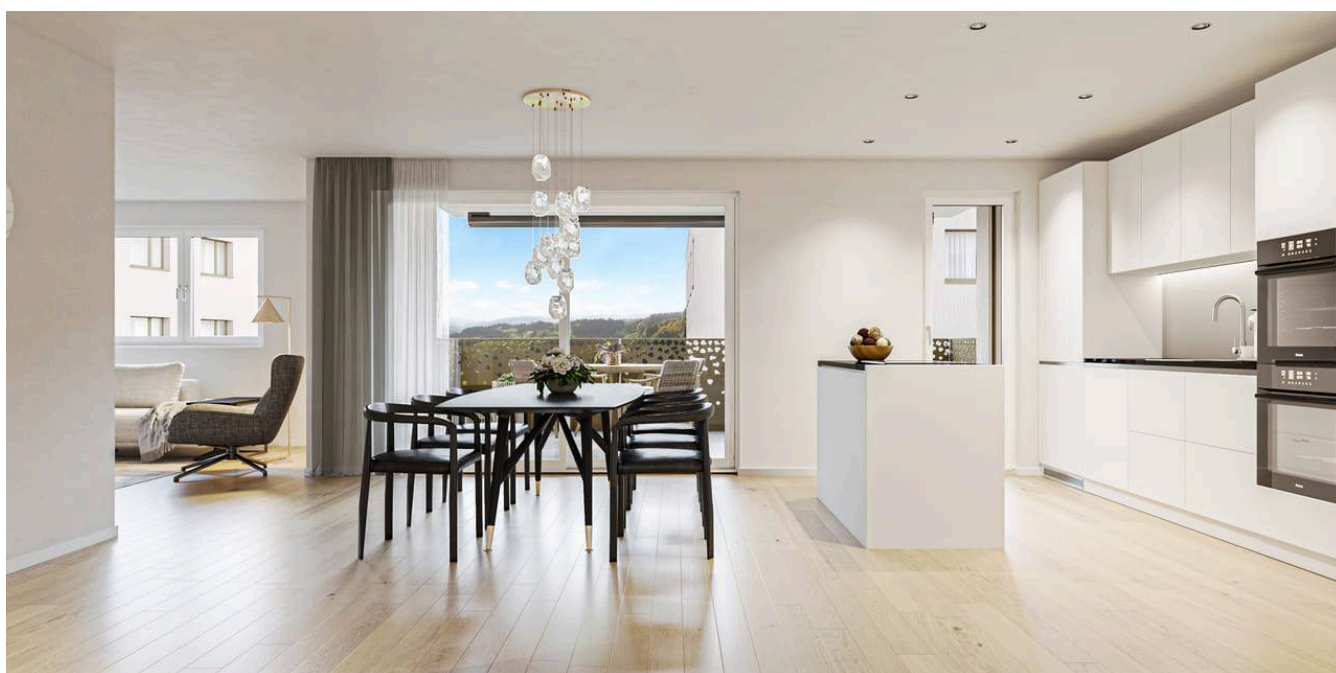
**Choice of finishes to suit
buyer's taste**



Solar panels



Remote heating



Galerie



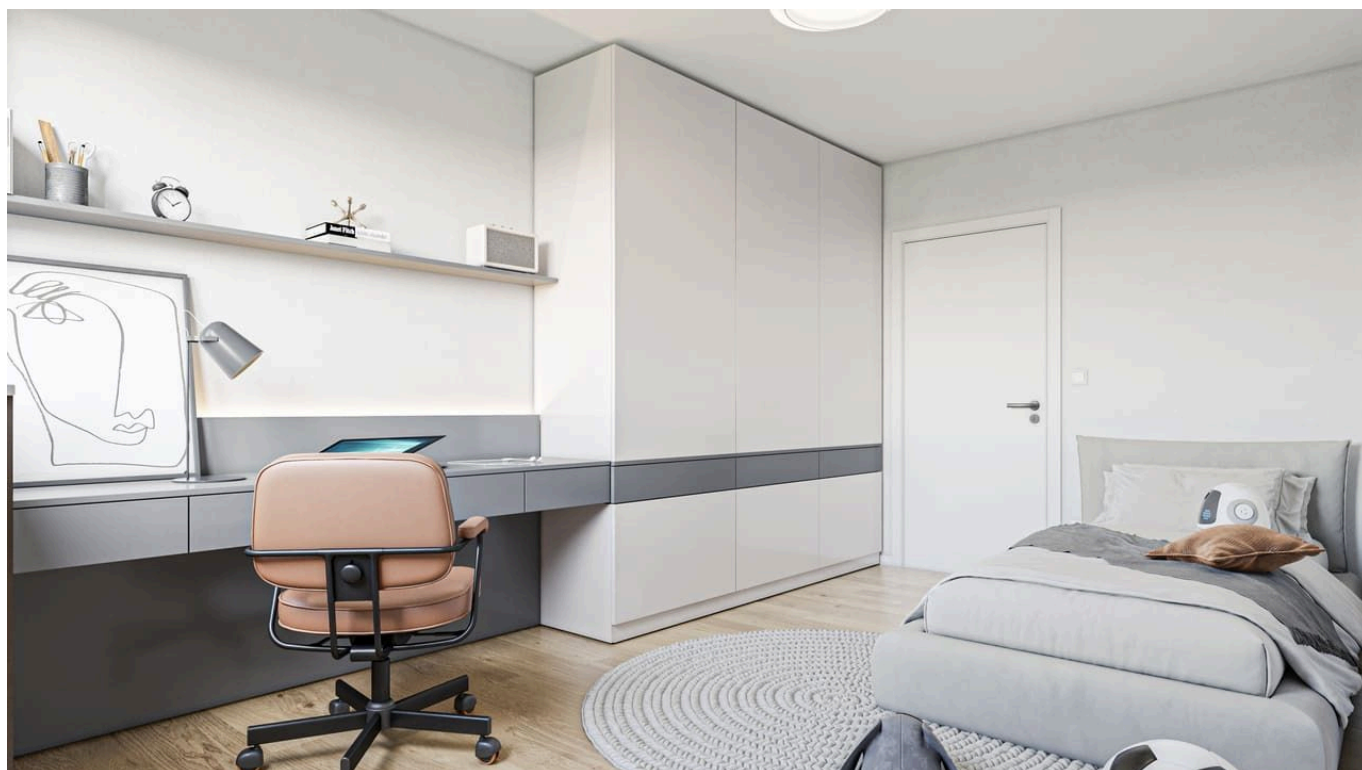
Galerie



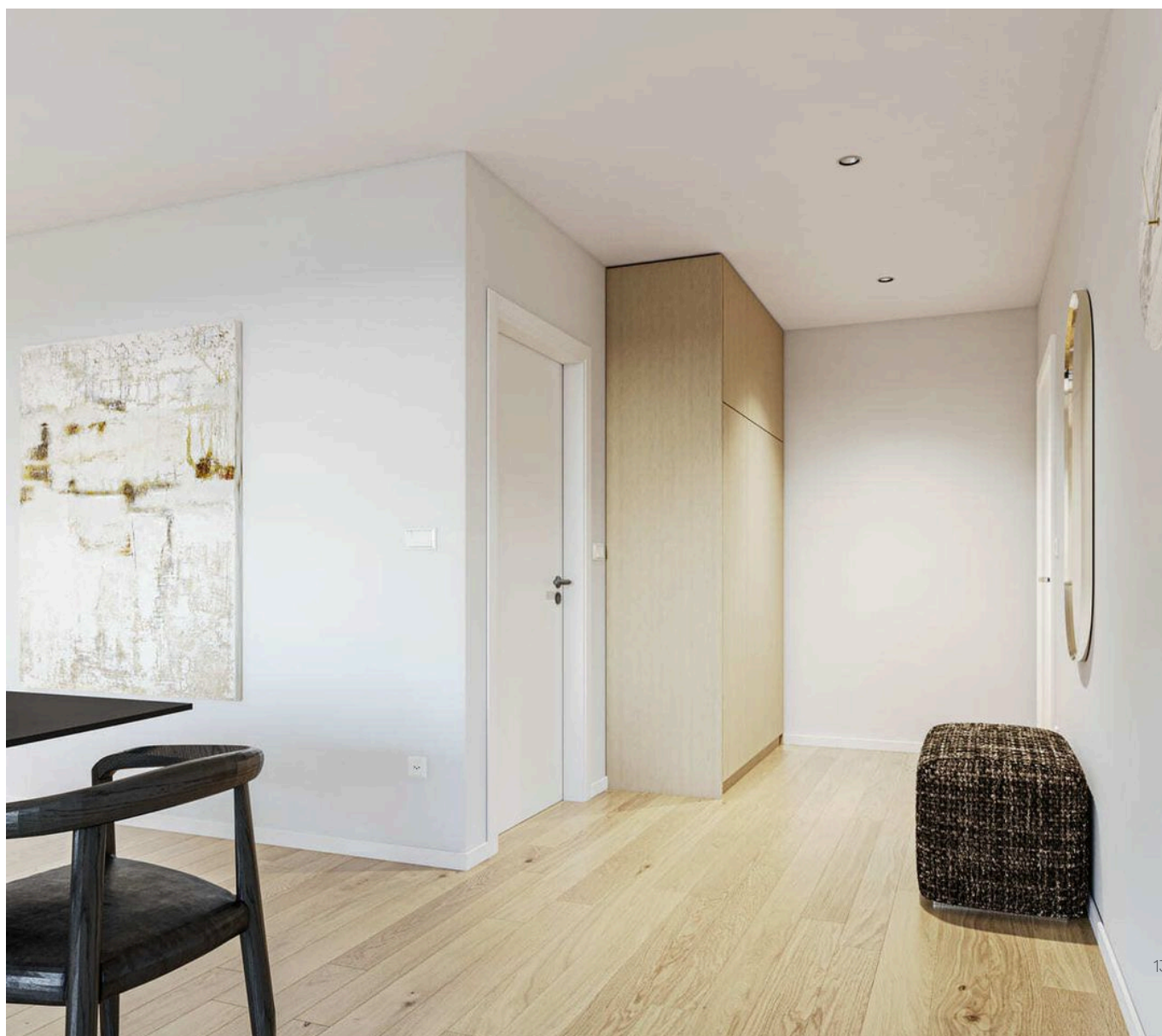
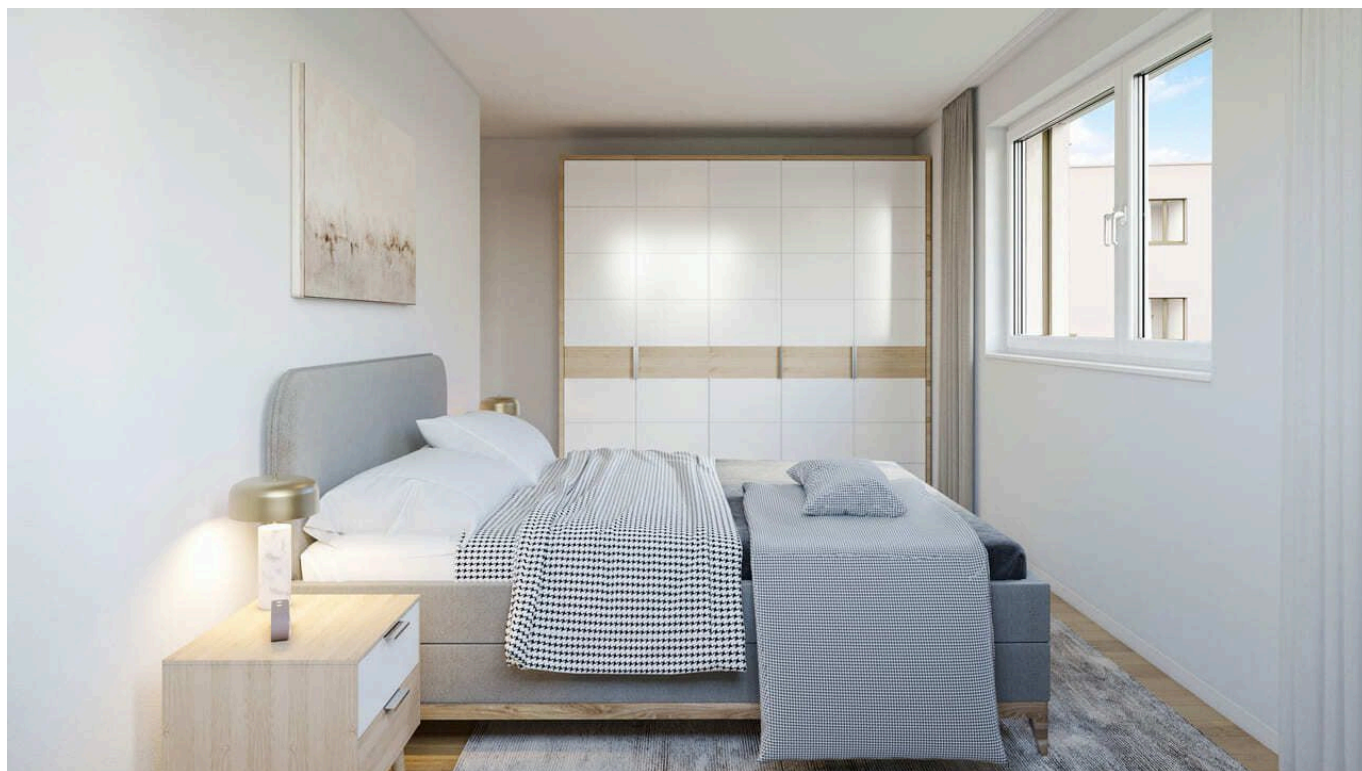
Galerie



Galerie



Galerie



Galerie



Technical data

Proximity

- Village
- Green
- Bus stop
- Play area
- School Nursery
- Golf
- Bike track
- Villa Area
- Children friendly
- Creche
- School Primary
- Sport Center
- Hiking Trail

Exterior

- Balcony
- Terrace
- Peace
- Garden
- Greenery

Interior

- Local
- Open Kitchen
- Triple Glazing
- Lift
- Underground Car Park
- Bath
- Cellar
- Builtin Closet
- Bright

Equipement

- Shower
- Kitchen
- Oven
- Freezer
- Washing Machine
- Electric Blind
- Interphone
- Kitchen Island
- Induction Cooker
- Fridge
- Dishwasher
- Dry Machine
- Telephone
- Internet
- Photovoltaic system

Ground

- Parquet Floor
- Tiles

State

- New

Sunshine

- Good
- All Day

Sight

- Champ
- Alps
- Unobstructed
- Jura

Environnement

- Bus stop

Extérieur

- Hills
- Electric garage door
- Visitor parking spaces

Contact



Mathieu Arm
+41 79 362 18 42
mathieu.arm@swsir.ch

**Switzerland Sotheby's International Realty (agence
d'Estavayer)**

Grand-Rue 19

1470 Estavayer-le-Lac

Tél. +41 26 555 08 50

www.switzerland-sothebysrealty.ch

vulliamma-murist.ch