

37,000 FEET

39°51'00"

4410,800 M

39°50'30"

4409,800 M

36,000 FEET

39°50'00"

4408,800 M

36,400 FEET

36,400 FEET

PREPARED FROM LOCAL TAX MAPS AND RECORDS AS A CONVENIENCE TO THE PUBLIC. ACCURACY OF ORIGINAL DATA CANNOT BE GUARANTEED BY THE DEPARTMENT OF ENVIRONMENTAL PROTECTION. TAX MAP AND TAX RECORD INFORMATION FURNISHED TO EARTH SATELLITE CORPORATION — MARK, PLUS AERIAL SURVEYS, INC. BY THE DEPARTMENT OF ENVIRONMENTAL PROTECTION, OFFICE OF LEGAL SERVICES AND REAL ESTATE.

PREPARED BY THE DEPARTMENT OF ENVIRONMENTAL PROTECTION IN ACCORDANCE WITH THE PROVISIONS OF THE WETLANDS ACT OF 1970 (N.J.S.A. 13.9A-1, ET. SEQ.)

LEGEND

- 34
(107)
X
- PROPERTY LINE
LOT NUMBER
DETAILS SHOWN ON A MASTER LIST
KEYED TO THIS SHEET.
BLOCK NUMBER
UPPER (INLAND) WETLANDS BOUNDARY
AREA ABOVE UPPER (INLAND) WETLANDS BOUNDARY—
PROPERTY INFORMATION NOT SHOWN.

NEW JERSEY STATE PLANE COORDINATE GRID LINES SHOWN AT 1000 FOOT INTERVALS.
UTM GRID TICKS, ZONE 18, SHOWN AT 200 METER INTERVALS.
LATITUDE AND LONGITUDE TICKS SHOWN AT 30 SECOND INTERVALS.

PROPERTY LINE OVERLAY
STATE OF NEW JERSEY
DEPARTMENT OF ENVIRONMENTAL PROTECTION
MATTHEWS BRANCH
WOODBURY

SCALE 1:2400

LEGEND

- MONUMENTED CONTROL POINT
PHOTOGRAMMETRIC CONTROL POINT
SPECIES LINE
UPPER (INLAND) WETLANDS BOUNDARY

- 2 ZIZANIA AQUATICA -
WILD RICE
3 NUPHAR ADVEYAL -
YELLOW WATER LILY
5 PHIRAMITES COMMUNIS -
COMMON REED
10 BARE GROUND

SPECIES COMBINATIONS ARE INDICATED BY MULTIPLE LETTERS. FOR EXAMPLE: B/C

37,000 FEET

39°51'00"

4410,800 M

39°50'30"

4409,800 M

36,000 FEET

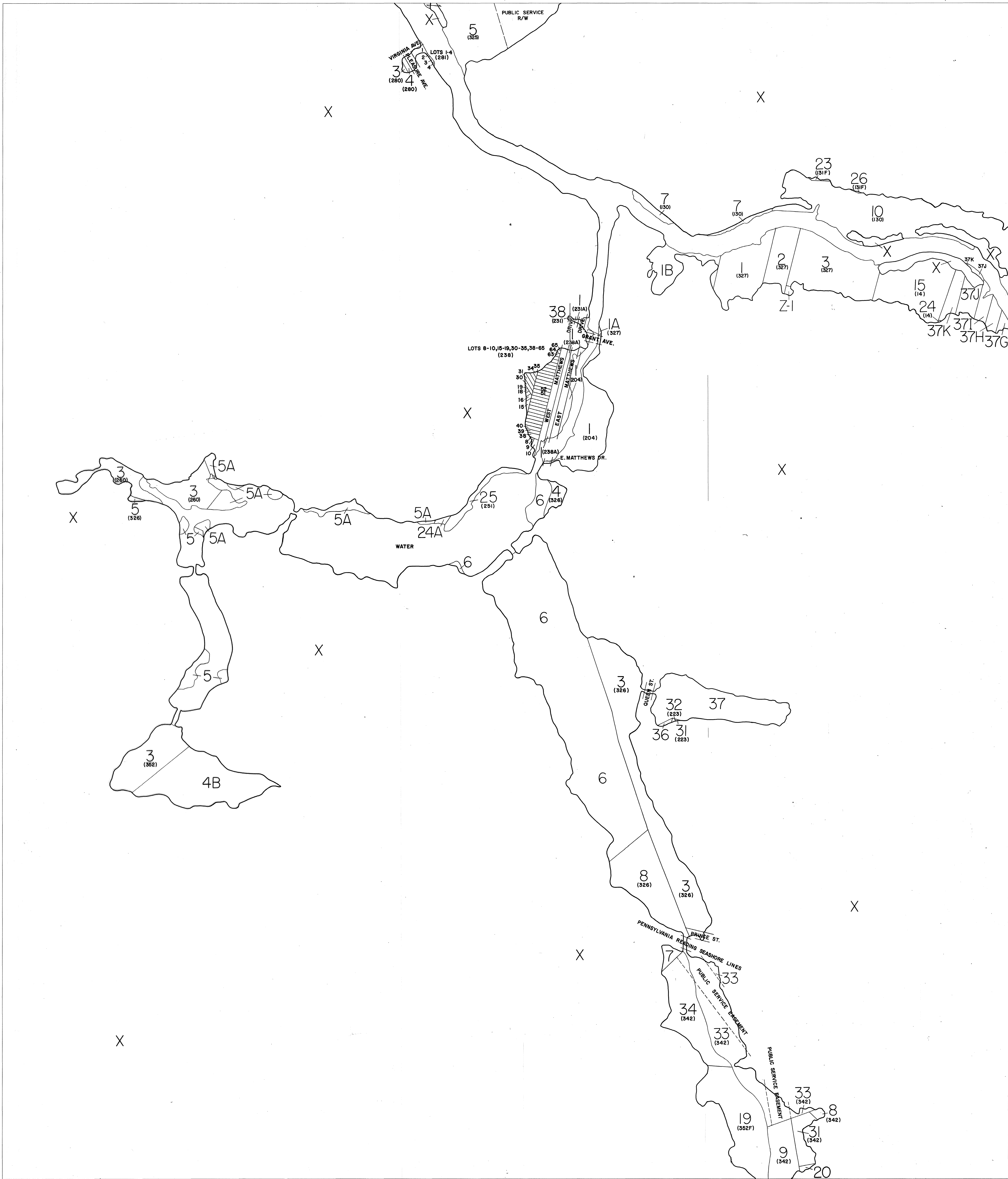
39°50'00"

4408,800 M

36,400 FEET

36,400 FEET

SHEET 364-1854



PROPERTY LINE OVERLAY

LEGEND

- 34 LOT NUMBER
- (107) BLOCK NUMBER
- X UPPER (INLAND) WETLANDS BOUNDARY
- AREA ABOVE UPPER (INLAND) WETLANDS BOUNDARY—PROPERTY INFORMATION NOT SHOWN



STATE OF NEW JERSEY
DEPARTMENT OF ENVIRONMENTAL PROTECTION
MATTHEWS BRANCH
WOODBURY

SCALE 1:2400
200 100 0 100 200 300 FEET

- LEGEND**
- △ MONUMENTED CONTROL POINT
 - PHOTOGRAMMETRIC CONTROL POINT
 - SPECIES LINE
 - UPPER (INLAND) WETLANDS BOUNDARY
 - 1 ZIZANIA AQUATICA - WILD RICE
 - 2 NUPHAR ADVENA - YELLOW WATER LILY
 - 3 PIRIFORMES COMMUNIS - COMMON REED
 - 10 BARE GROUND

SPECIES COMBINATIONS ARE INDICATED BY MULTIPLE LETTERS. FOR EXAMPLE, B/C

PREPARED BY THE DEPARTMENT OF ENVIRONMENTAL PROTECTION IN ACCORDANCE WITH THE PROVISIONS OF "THE WETLANDS ACT OF 1970" (N.J.S.A. 13:9A-1, ET. SEQ.)
AERIAL PHOTOGRAPHY BY GARY SATCHEL CORPORATION, HARK HURD AERIAL SURVEYS, INC. FROM NATURAL COLOR AND COLOR INFRARED PHOTOGRAPHS, TAKEN 22 JULY THROUGH 9 SEPTEMBER 1972.
TIDE MEASUREMENTS OF THE BASIN PROVIDED BY AND DRAWN BY THE U.S. ARMY CORPS OF ENGINEERS, NEW YORK DISTRICT, NEW YORK DISTRICT, NEW YORK DISTRICT.

NEW JERSEY STATE PLANE COORDINATE GRID LINES SHOWN AT 1000 FOOT INTERVALS
UTM GRID TICKS, ZONE 18, SHOWN AT 200 METER INTERVALS
LATITUDE AND LONGITUDE TICKS SHOWN AT 30 SECOND INTERVALS