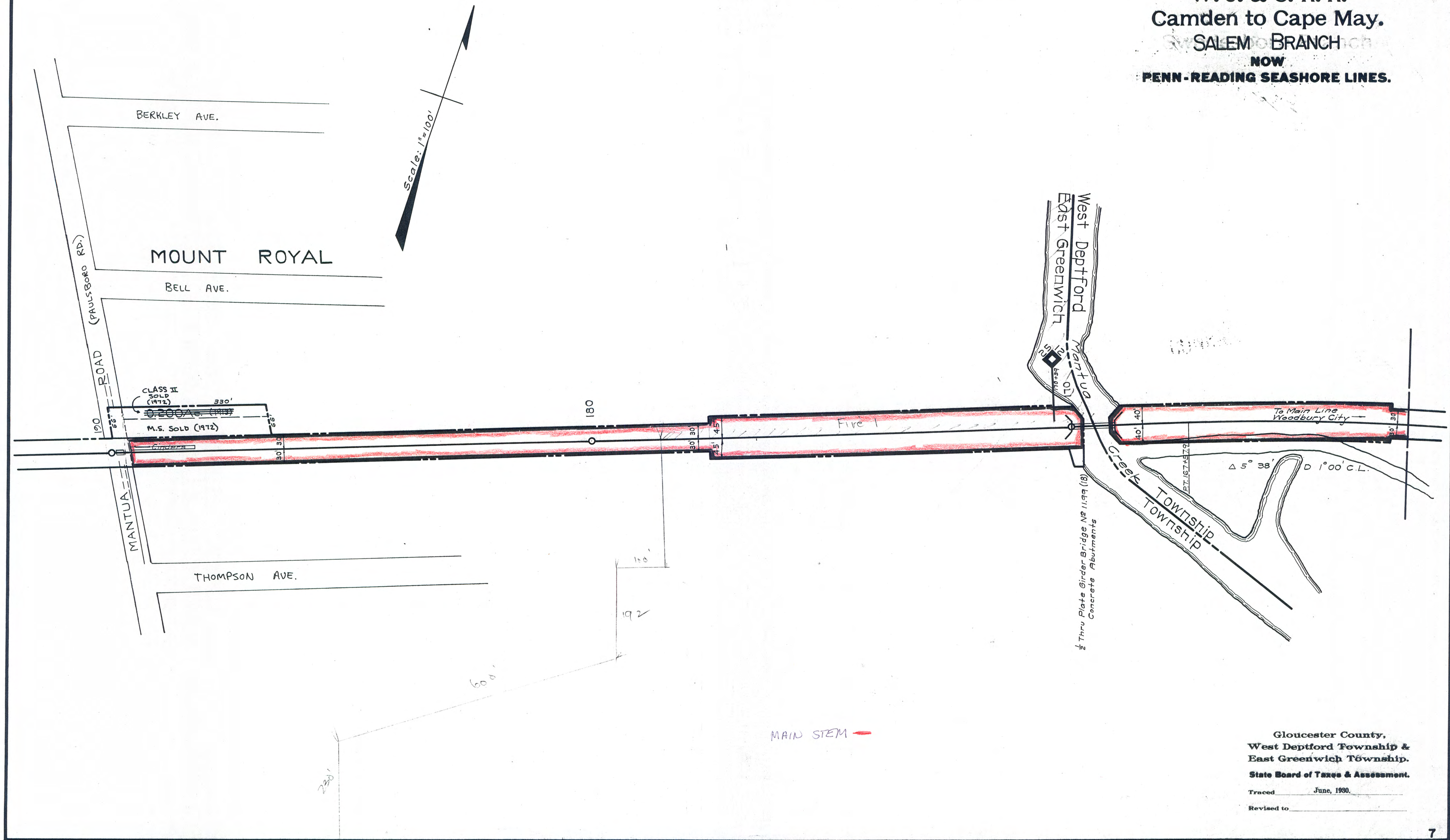


W. J. & S. R. R.
Camden to Cape May.
SALEM BRANCH
NOW
PENN.-READING SEASHORE LINES.

7



**Gloucester County,
West Deptford Township &
East Greenwich Township.
State Board of Taxes & Assessment.**

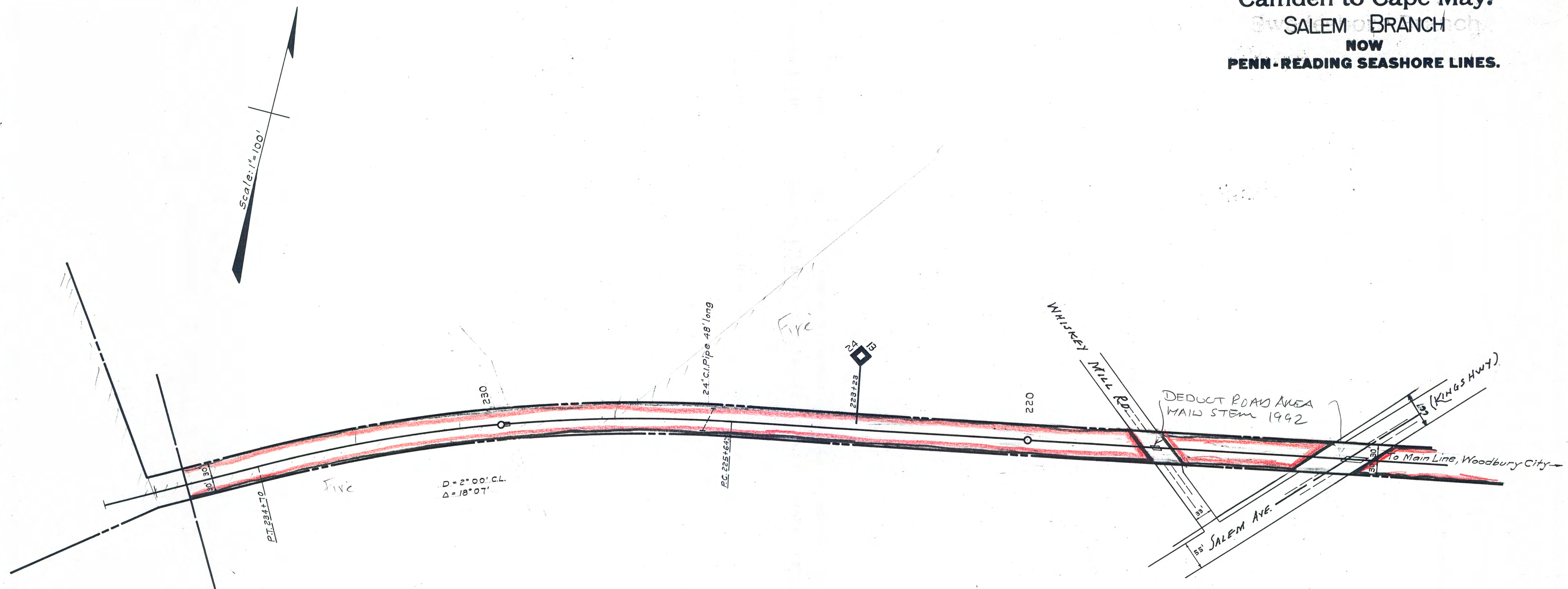
Traced June, 1930.

Revised to _____

MAIN STEM

7

W. J. & S. R. R.
Camden to Cape May.
SALEM BRANCH
NOW
PENN-READING SEASHORE LINES.

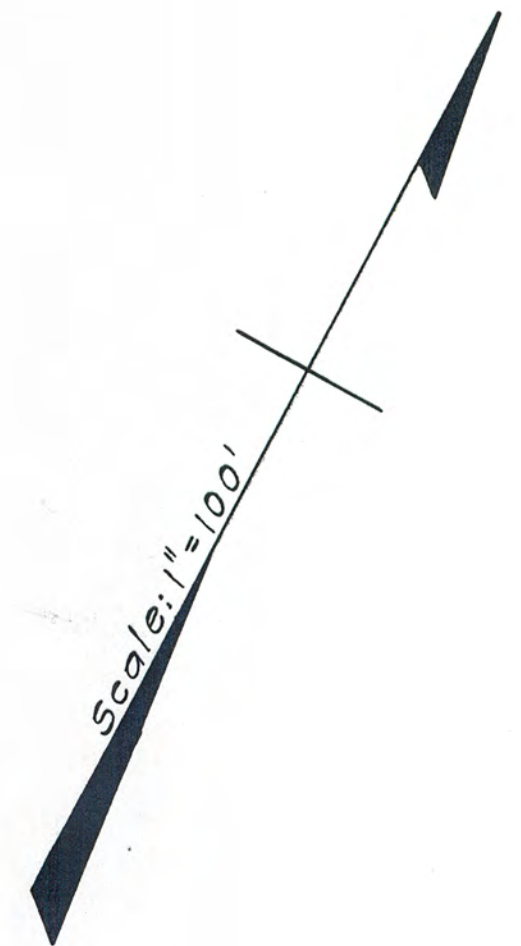


MAIN STEM

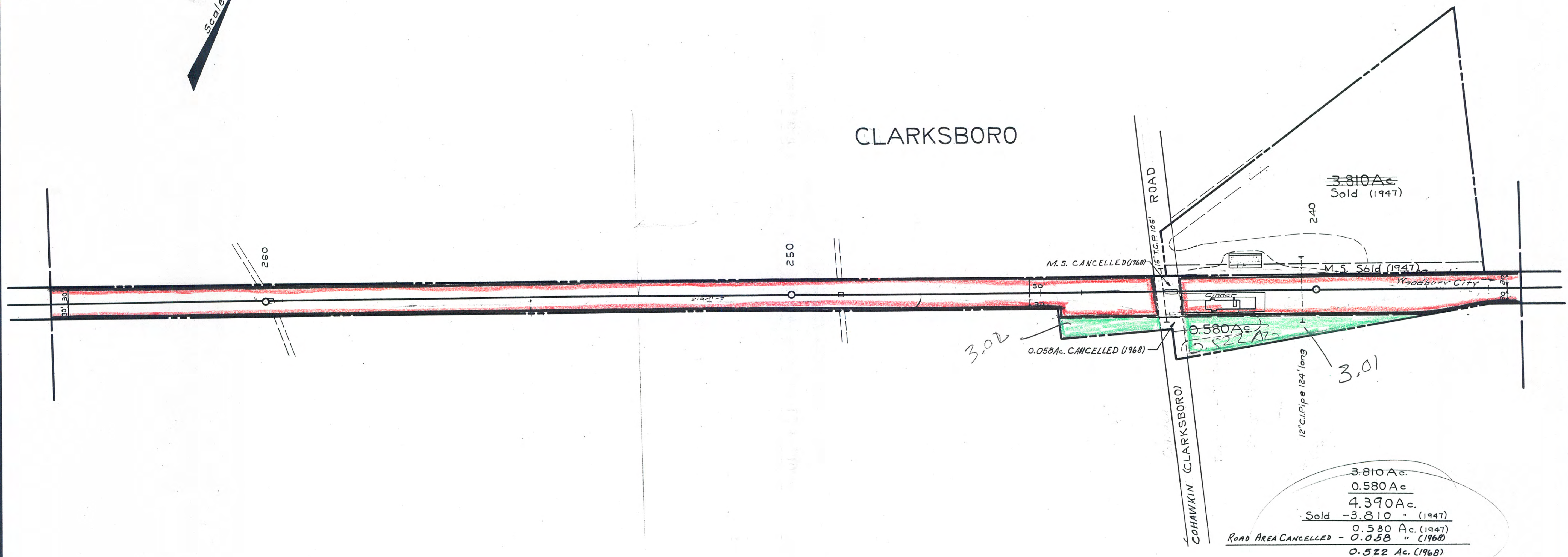
Gloucester County,
East Greenwich Township.
State Board of Taxes & Assessment.
Traced June, 1930.
Revised to

W. J. & S. R. R.
Camden to Cape May.
SALEM BRANCH
NOW
PENN-READING SEASHORE LINES.

8-3-2-2-1-8-10



CLARKSBORO



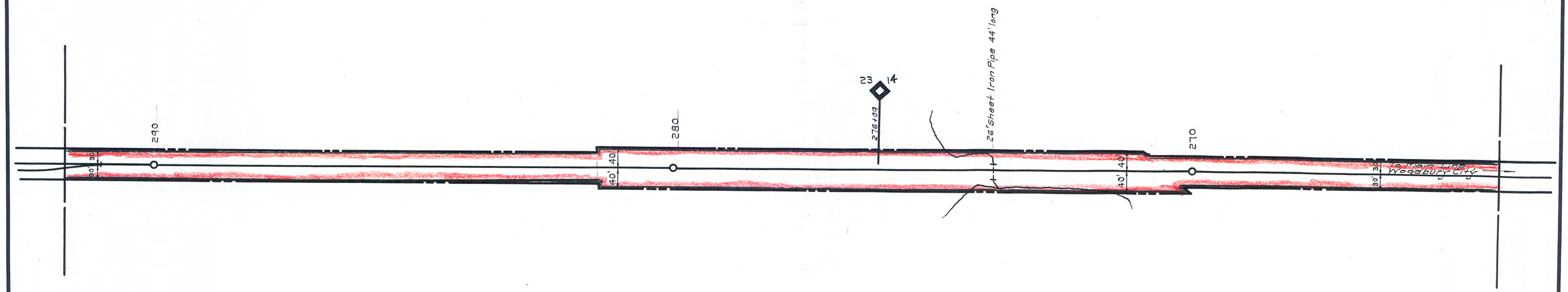
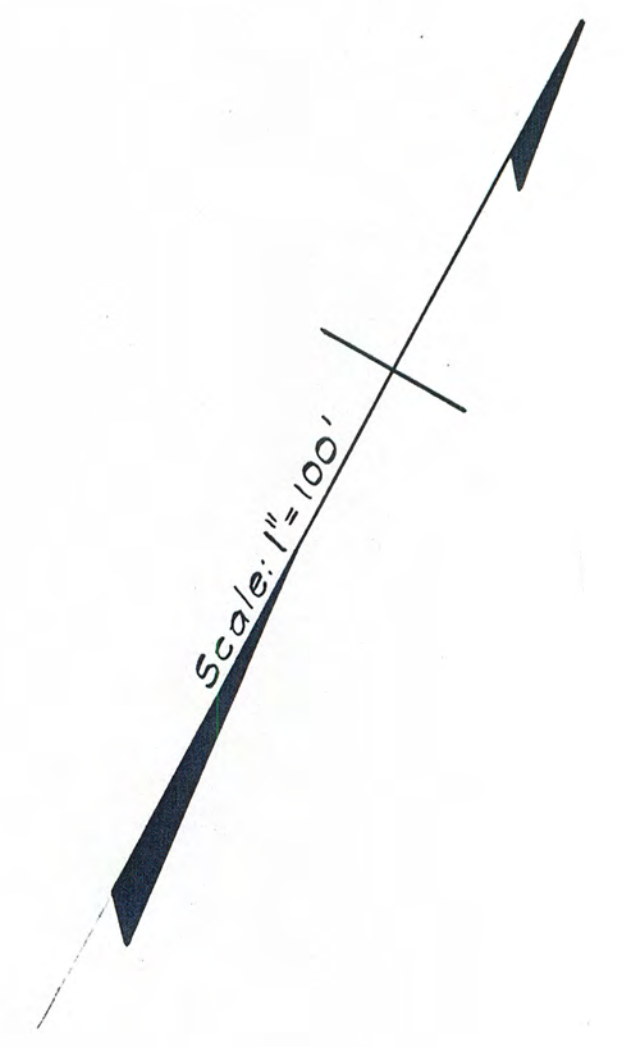
MAIN STEM
CLASS II

3.810 Ac.
0.580 Ac.
4.390 Ac.
Sold - 3.810 " (1947)
0.580 Ac. (1947)
Road Area CANCELLED - 0.058 " (1968)
0.522 Ac. (1968)

Gloucester County,
East Greenwich Township.
State Board of Taxes & Assessment.
Traced June, 1930.
Revised to

W. J. & S. R. R.
Camden to Cape May.
SALEM BRANCH
NOW
PENN-READING SEASHORE LINES.

11



MAIN STEM

Gloucester County,
East Greenwich Township.
State Board of Taxes & Assessment.
Traced June, 1930.
Revised to

11

W. J. & S. R. R.
Camden to Cape May.
SALEM BRANCH
NOW
PENN.-READING SEASHORE LINES.

12

MICKLETON

0.380 Ac.
ROAD AREA CANCELLED - 0.030 Ac. (1968)

0.350 Ac. (1968)
SOLD - 0.350 Ac. (1974)

CL.II SOLD (1974) -0.350Ac.

0.380 A.c.

M.S. SOLD (1974)

✓ 0.030 Ac. CANCELLED (1968)

- M.S. CANCELLED (1968)

DEDUCT ROAD
AREA, MAIN STEEL
1992

To Main Line
Woodbury City

MAIN STEM

Fire →

Gloucester County,
East Greenwich Township.
State Board of Taxes & Assessment.
Traced _____ June, 1930. Five
Revised to _____

PC-27-29

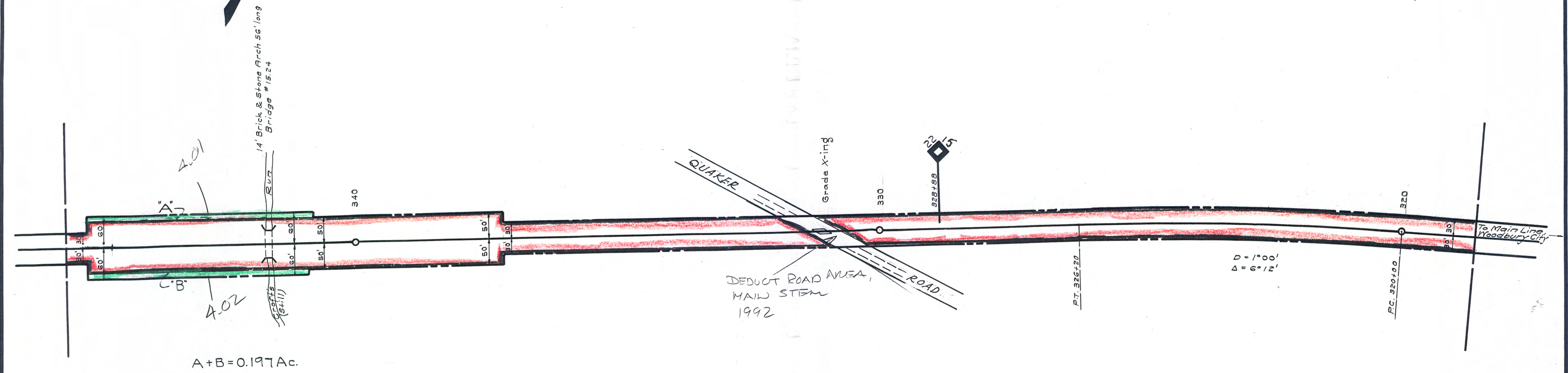
TUB #1 POCKET #1 FOLDER #1

W. J. & S. R. R.
Camden to Cape May.
SALEM BRANCH
NOW
PENN-READING SEASHORE LINES.

13

8-3-2-2-1-8-13

Scale: 1"=100'



DEDUCT ROAD AREA,
MAIN STEM
1992

MAIN STEM
CLASS II

Gloucester County,
East Greenwich Township.
State Board of Taxes & Assessment.
Traced June, 1930.
Revised to

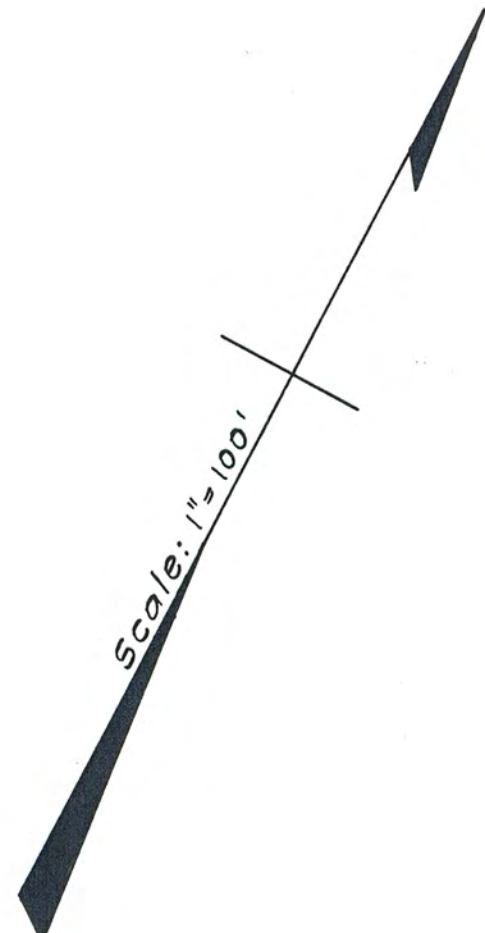
13

1958 1954

W. J. & S. R. R.
Camden to Cape May.
SALEM BRANCH
NOW
PENN-READING SEASHORE LINES.

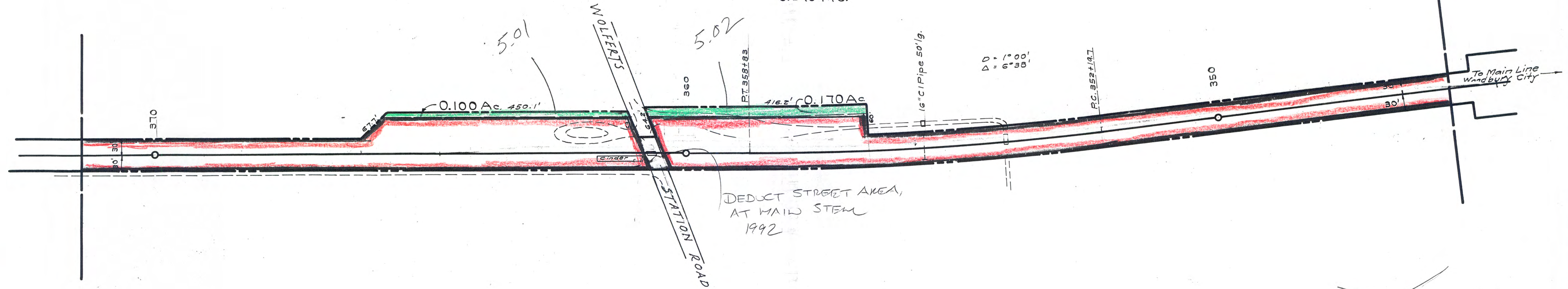
14

8-3-2-2-1-8-14



WOLFERT

0.170 Ac.
0.100 Ac.
0.270 Ac.



DEDUCT STREET AREA,
AT MAIN STEM
1992

MAIN STEM

CLASS II

Gloucester County,
East Greenwich Township.
State Board of Taxes & Assessment.
Traced June, 1990.
Revised to

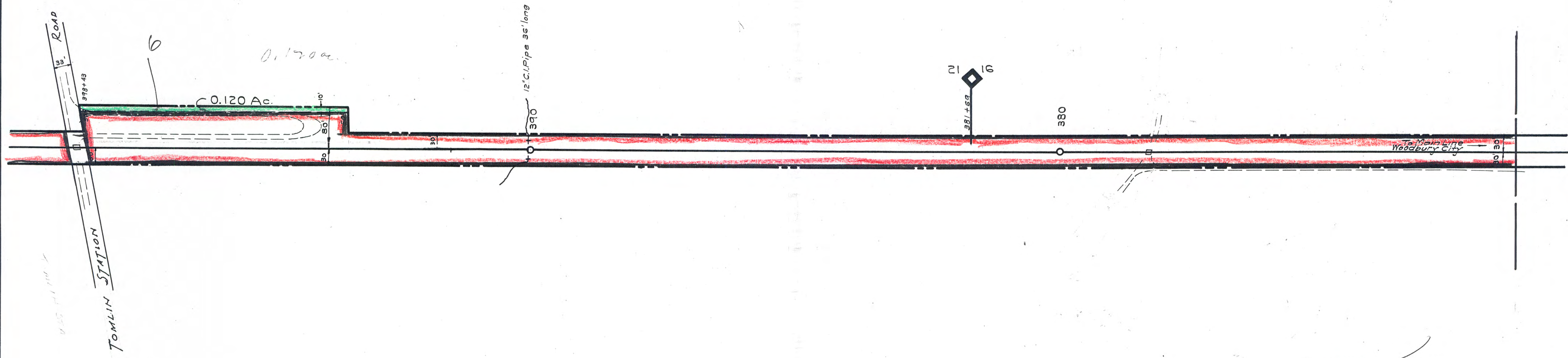
14

W. J. & S. R. R.
Camden to Cape May.
SALEM BRANCH
NOW
PENN-READING SEASHORE LINES.

15

8-3-2-2-1-8-15

Scale: 1" = 100'

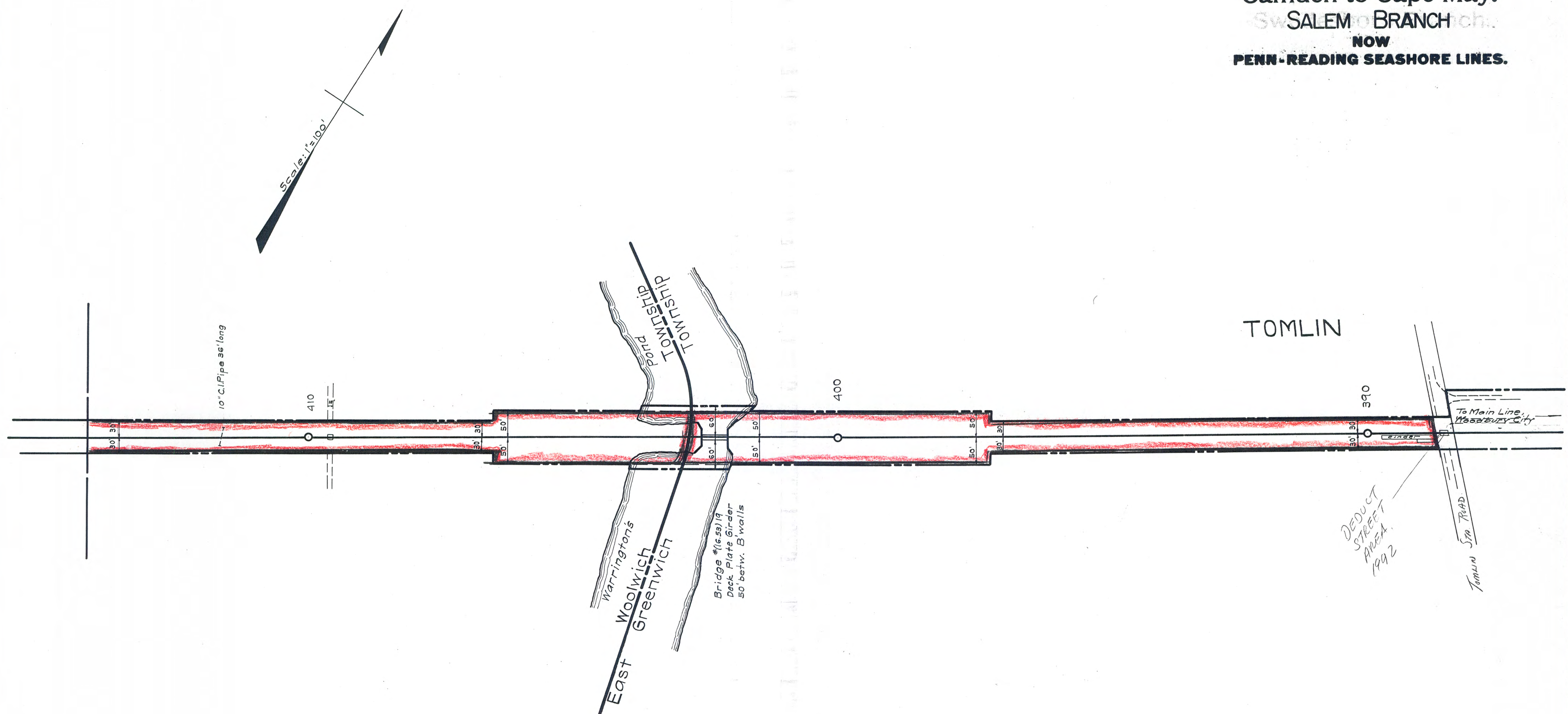


MAIN STEM
CLASS II

Gloucester County,
East Greenwich Township.
State Board of Taxes & Assessment.
Traced June, 1930.
Revised to

W. J. & S. R. R.
Camden to Cape May.
SALEM BRANCH
NOW
PENN-READING SEASHORE LINES.

16



MAIN STEM

Gloucester County,
East Greenwich Township &
Woolwich Township.
State Board of Taxes & Assessment.
Traced June, 1930.
Revised to

27M 0A0811A8