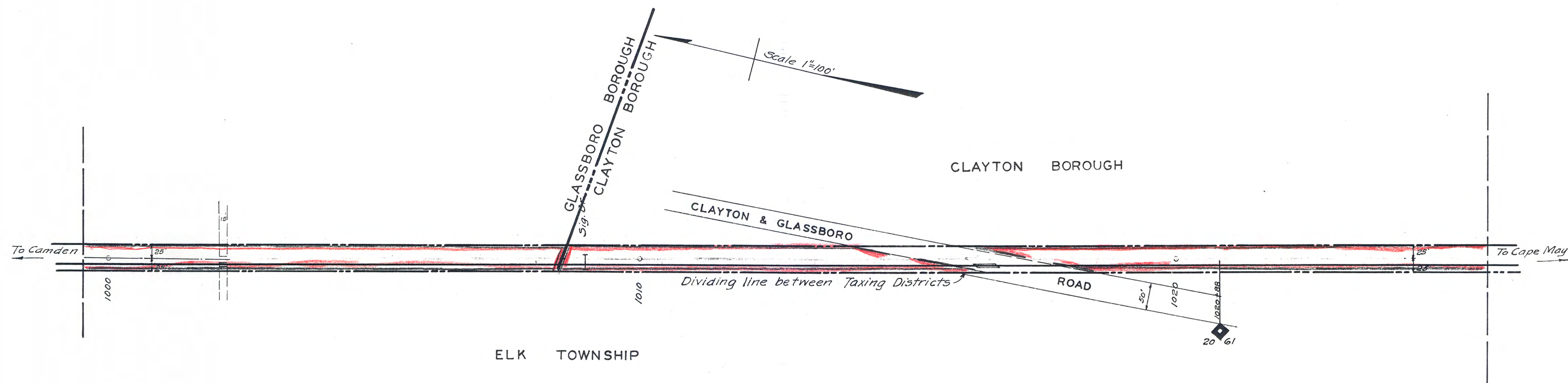


W. J. & S. R. R.
Camden to Cape May.
~~Main Line.~~
NOW
PENN-READING SEASHORE LINES.
Millville Branch.



MAIN STEM —

Gloucester County,
Glassboro Borough,
~~Elk Township &~~
Clayton Borough.

State Board of Taxes & Assessment.

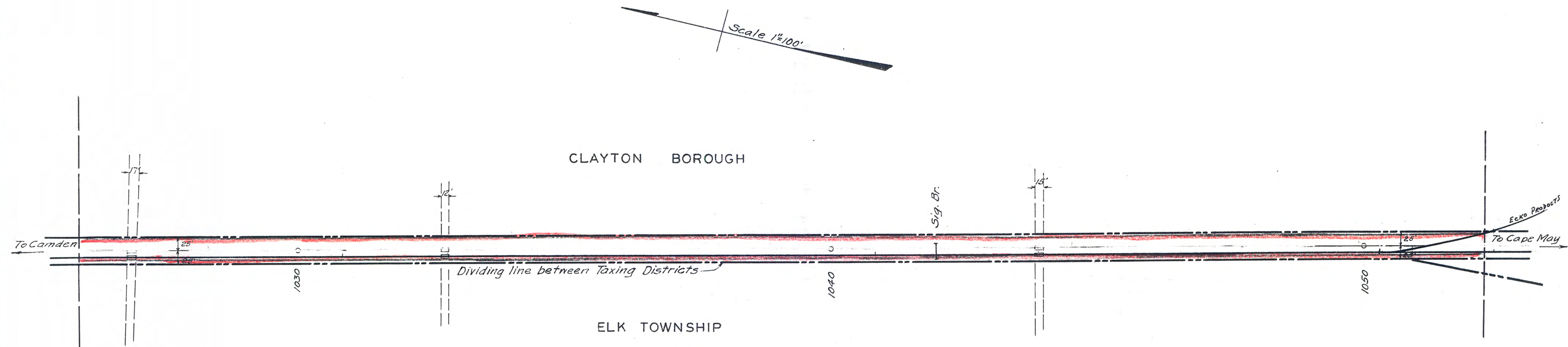
Traced October, 1926.

Revised to.

W. J. & S. R. R.
Camden to Cape May.

~~Main Line.~~

NOW
PENN-READING SEASHORE LINES.
Millville Branch.



MAIN STEM —

Gloucester County,
~~Elk Township &~~
Clayton Borough.

State Board of Taxes & Assessment.

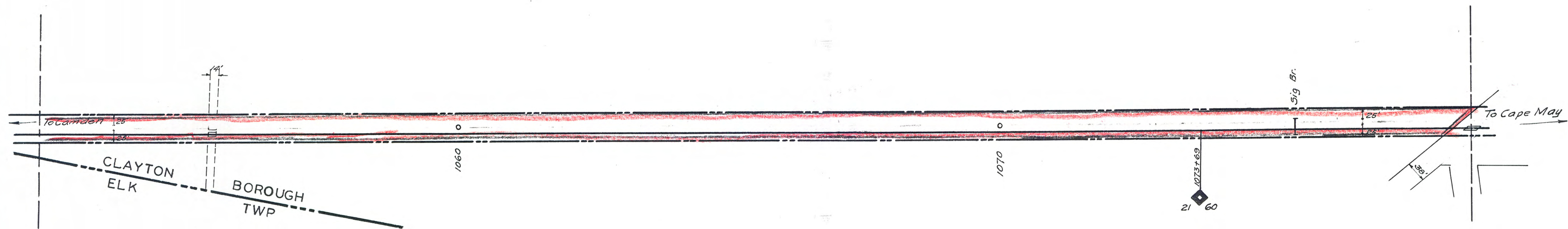
Traced October, 1926.

Revised to _____

W. J. & S. R. R.
Camden to Cape May.
~~Main Line.~~
NOW
PENN-READING SEASHORE LINES.
Millville Branch.

Scale 1"=100'

18" I. Pipe 32'

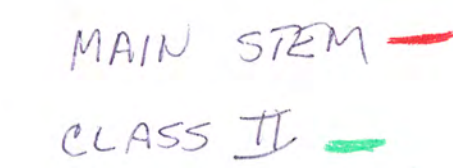


MAIN STEM

Gloucester County,
Clayton Borough.
State Board of Taxes & Assessment.
Traced October, 1926.
Revised to

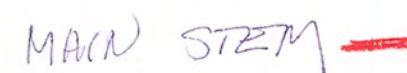
8-1-2-2-1-1-4L

Scale 1"=100'



42

44



1954

L.C. 9909 M.P. 6

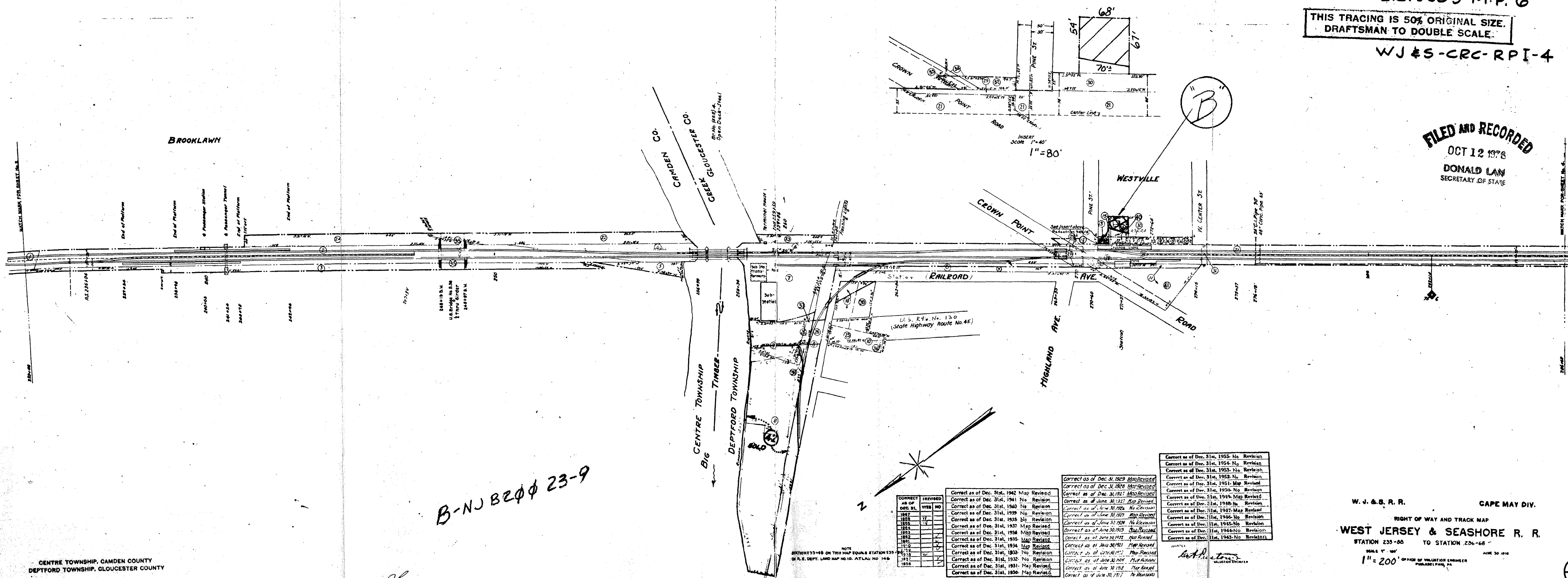
THIS TRACING IS 50% ORIGINAL SIZE.
DRAFTSMAN TO DOUBLE SCALE.

WJ & S - CRC - RPI - 4

FILED AND RECORDED
OCT 12 1978

OCT 12 1978

DONALD LAM
SECRETARY OF STATE



B-NJ B200 23-9

CENTRE TOWNSHIP, CAMDEN COUNTY
DEPTFORD TOWNSHIP, GLOUCESTER COUNTY

W. J. & S. R. R.

CAPE MAY DIV.

RIGHT OF WAY AND TRACK MAP
WEST JERSEY & SEASHORE R. R.

STATION 233+88 TO STATION 236+68 -
SCALE 1" = 100'
1" = 200' OFFICE OF VALUATION ENGINEER
JUNE 30 1968

1210

V.2.3
3

OWNER	VALUATION SUB SHEET	REAL ESTATE
907	SECTION DIV. NUMBER	REGION
	8558 3 4	4

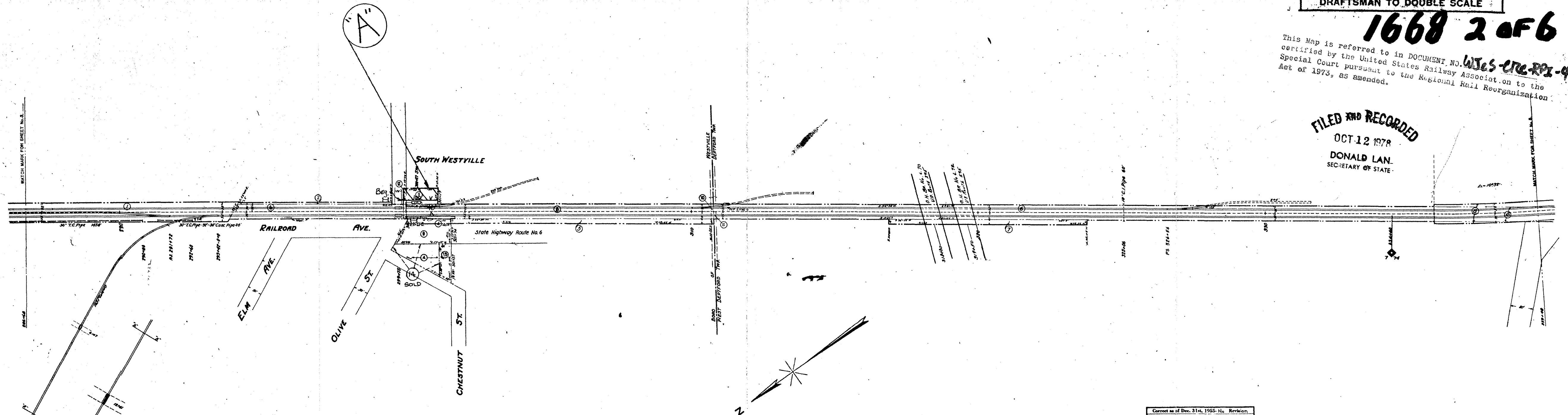
9909-6.7

THIS TRACING IS 50% ORIGINAL SIZE.
DRAFTSMAN TO DOUBLE SCALE

1668 2 OF 6

This Map is referred to in DOCUMENT NO. **WJES-CRC-RP-4**
certified by the United States Railway Association to the
Special Court pursuant to the Regional Rail Reorganization
Act of 1973, as amended.

FILED AND RECORDED
OCT 12 1978
DONALD LAN.
SECRETARY OF STATE



*NJB 20021-5
4,800 FT*

DEPTFORD TOWNSHIP, GLOUCESTER COUNTY, N.J.

Drawer 46 Map 12, 13 and 14

CORRECT AS OF	REVISED
DEC. 31, 1927	YES NO
1927	
1928	
1929	
1930	
1931	
1932	
1933	
1934	
1935	
1936	

NOTE
STATION 206+68 IN THIS MAP EQUALS STATION 206+64
ON R. E. DEPT. LAND MAP NO. 12. ASION NO. 146

Correct as of Dec. 31st, 1912	No Revision
Correct as of Dec. 31st, 1913	Map Revised
Correct as of Dec. 31st, 1914	No Revision
Correct as of Dec. 31st, 1915	Map Revised
Correct as of Dec. 31st, 1916	No Revision
Correct as of Dec. 31st, 1917	Map Revised
Correct as of Dec. 31st, 1918	No Revision
Correct as of Dec. 31st, 1919	Map Revised
Correct as of Dec. 31st, 1920	No Revision

Correct as of Dec. 31, 1929	Map Revised
Correct as of Dec. 31, 1930	Map Revised
Correct as of June 30, 1931	No Revision
Correct as of June 30, 1932	No Revision
Correct as of June 30, 1933	No Revision
Correct as of June 30, 1934	No Revision
Correct as of June 30, 1935	No Revision
Correct as of June 30, 1936	No Revision
Correct as of June 30, 1937	No Revision
Correct as of June 30, 1938	No Revision
Correct as of June 30, 1939	No Revision

Correct as of Dec. 31st, 1955	No Revision
Correct as of Dec. 31st, 1954	No Revision
Correct as of Dec. 31st, 1953	No Revision
Correct as of Dec. 31st, 1952	No Revision
Correct as of Dec. 31st, 1951	No Revision
Correct as of Dec. 31st, 1950	Map Revised
Correct as of Dec. 31st, 1949	No Revision
Correct as of Dec. 31st, 1948	Map Revised
Correct as of Dec. 31st, 1947	Map Revised
Correct as of Dec. 31st, 1946	Map Revised
Correct as of Dec. 31st, 1945	No Revision
Correct as of Dec. 31st, 1944	Map Revised
Correct as of Dec. 31st, 1943	No Revision

W.J. & S.R.R.
VALUATION ENGINEER

W. J. & S. R. R. CAPE MAY DIV.

RIGHT OF WAY AND TRACK MAP
WEST JERSEY & SEASHORE R. R.

STATION 206+68 TO STATION 334+48

SCALE 1" = 100'
1" = 200' OFFICE OF VALUATION ENGINEER
PHILADELPHIA, PA.

2 of 10

123
4

9909-10.2

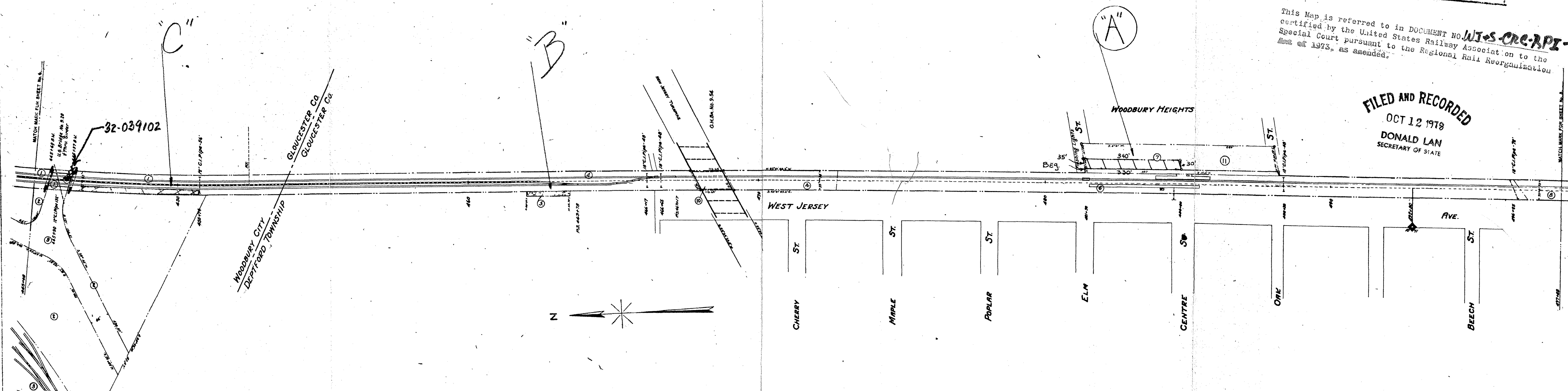
OWNER	VALUATION	SUB	SHEET	REAL ESTATE
932	8558	3	7	REGION

1668 3 OF 6

THIS TRACING IS 50% ORIGINAL SIZE.
DRAFTSMAN TO DOUBLE SCALE

This Map is referred to in DOCUMENT NO. **WT-S-CRC-RPI-4**
certified by the United States Railway Association to the
Special Court pursuant to the Regional Rail Reorganization
Act of 1973, as amended.

FILED AND RECORDED
OCT 12 1979
DONALD LAN
SECRETARY OF STATE



982

WOODBURY CITY, GLOUCESTER COUNTY
DEPTFORD TOWNSHIP, GLOUCESTER COUNTY

Drawer 46 Map 18, 19, and 20

A-ME20023-6 K CROFT
B- " 21-8
VC- " 22-1

REVISED	YES	NO
1		
2		
3		
4		
5		
6		
7		
8		
9		
10		
11		

STATION 445+00 ON THIS MAP EQUALS STATION 444+38.5
ON N. E. DEPT. LAND MAP NO. 18 ATLAS NO. 146

Correct as of Dec. 31st, 1915: No Revision	Correct as of Dec. 31st, 1915: No Revision
Correct as of Dec. 31st, 1916: Map Revised	Correct as of Dec. 31st, 1916: Map Revised
Correct as of Dec. 31st, 1917: No Revision	Correct as of Dec. 31st, 1917: No Revision
Correct as of Dec. 31st, 1918: No Revision	Correct as of Dec. 31st, 1918: No Revision
Correct as of Dec. 31st, 1919: No Revision	Correct as of Dec. 31st, 1919: No Revision
Correct as of Dec. 31st, 1920: No Revision	Correct as of Dec. 31st, 1920: No Revision
Correct as of Dec. 31st, 1921: No Revision	Correct as of Dec. 31st, 1921: No Revision
Correct as of Dec. 31st, 1922: No Revision	Correct as of Dec. 31st, 1922: No Revision
Correct as of Dec. 31st, 1923: No Revision	Correct as of Dec. 31st, 1923: No Revision
Correct as of Dec. 31st, 1924: No Revision	Correct as of Dec. 31st, 1924: No Revision
Correct as of Dec. 31st, 1925: No Revision	Correct as of Dec. 31st, 1925: No Revision
Correct as of Dec. 31st, 1926: No Revision	Correct as of Dec. 31st, 1926: No Revision
Correct as of Dec. 31st, 1927: No Revision	Correct as of Dec. 31st, 1927: No Revision
Correct as of Dec. 31st, 1928: No Revision	Correct as of Dec. 31st, 1928: No Revision
Correct as of Dec. 31st, 1929: No Revision	Correct as of Dec. 31st, 1929: No Revision
Correct as of Dec. 31st, 1930: No Revision	Correct as of Dec. 31st, 1930: No Revision

Correct as of Dec. 31st, 1928: Map Revised	Correct as of Dec. 31st, 1928: Map Revised
Correct as of Dec. 31st, 1929: No Revision	Correct as of Dec. 31st, 1929: No Revision
Correct as of Dec. 31st, 1930: No Revision	Correct as of Dec. 31st, 1930: No Revision
Correct as of Dec. 31st, 1931: No Revision	Correct as of Dec. 31st, 1931: No Revision
Correct as of Dec. 31st, 1932: No Revision	Correct as of Dec. 31st, 1932: No Revision
Correct as of Dec. 31st, 1933: No Revision	Correct as of Dec. 31st, 1933: No Revision
Correct as of Dec. 31st, 1934: No Revision	Correct as of Dec. 31st, 1934: No Revision
Correct as of Dec. 31st, 1935: No Revision	Correct as of Dec. 31st, 1935: No Revision
Correct as of Dec. 31st, 1936: No Revision	Correct as of Dec. 31st, 1936: No Revision
Correct as of Dec. 31st, 1937: No Revision	Correct as of Dec. 31st, 1937: No Revision
Correct as of Dec. 31st, 1938: No Revision	Correct as of Dec. 31st, 1938: No Revision
Correct as of Dec. 31st, 1939: No Revision	Correct as of Dec. 31st, 1939: No Revision
Correct as of Dec. 31st, 1940: No Revision	Correct as of Dec. 31st, 1940: No Revision
Correct as of Dec. 31st, 1941: No Revision	Correct as of Dec. 31st, 1941: No Revision
Correct as of Dec. 31st, 1942: No Revision	Correct as of Dec. 31st, 1942: No Revision
Correct as of Dec. 31st, 1943: No Revision	Correct as of Dec. 31st, 1943: No Revision
Correct as of Dec. 31st, 1944: No Revision	Correct as of Dec. 31st, 1944: No Revision
Correct as of Dec. 31st, 1945: No Revision	Correct as of Dec. 31st, 1945: No Revision
Correct as of Dec. 31st, 1946: No Revision	Correct as of Dec. 31st, 1946: No Revision
Correct as of Dec. 31st, 1947: No Revision	Correct as of Dec. 31st, 1947: No Revision
Correct as of Dec. 31st, 1948: No Revision	Correct as of Dec. 31st, 1948: No Revision
Correct as of Dec. 31st, 1949: No Revision	Correct as of Dec. 31st, 1949: No Revision
Correct as of Dec. 31st, 1950: No Revision	Correct as of Dec. 31st, 1950: No Revision
Correct as of Dec. 31st, 1951: No Revision	Correct as of Dec. 31st, 1951: No Revision
Correct as of Dec. 31st, 1952: No Revision	Correct as of Dec. 31st, 1952: No Revision
Correct as of Dec. 31st, 1953: No Revision	Correct as of Dec. 31st, 1953: No Revision
Correct as of Dec. 31st, 1954: No Revision	Correct as of Dec. 31st, 1954: No Revision
Correct as of Dec. 31st, 1955: No Revision	Correct as of Dec. 31st, 1955: No Revision

Correct as of Dec. 31st, 1955: No Revision	Correct as of Dec. 31st, 1955: No Revision
Correct as of Dec. 31st, 1956: No Revision	Correct as of Dec. 31st, 1956: No Revision
Correct as of Dec. 31st, 1957: No Revision	Correct as of Dec. 31st, 1957: No Revision
Correct as of Dec. 31st, 1958: No Revision	Correct as of Dec. 31st, 1958: No Revision
Correct as of Dec. 31st, 1959: No Revision	Correct as of Dec. 31st, 1959: No Revision
Correct as of Dec. 31st, 1960: No Revision	Correct as of Dec. 31st, 1960: No Revision
Correct as of Dec. 31st, 1961: No Revision	Correct as of Dec. 31st, 1961: No Revision
Correct as of Dec. 31st, 1962: No Revision	Correct as of Dec. 31st, 1962: No Revision
Correct as of Dec. 31st, 1963: No Revision	Correct as of Dec. 31st, 1963: No Revision
Correct as of Dec. 31st, 1964: No Revision	Correct as of Dec. 31st, 1964: No Revision
Correct as of Dec. 31st, 1965: No Revision	Correct as of Dec. 31st, 1965: No Revision
Correct as of Dec. 31st, 1966: No Revision	Correct as of Dec. 31st, 1966: No Revision
Correct as of Dec. 31st, 1967: No Revision	Correct as of Dec. 31st, 1967: No Revision
Correct as of Dec. 31st, 1968: No Revision	Correct as of Dec. 31st, 1968: No Revision
Correct as of Dec. 31st, 1969: No Revision	Correct as of Dec. 31st, 1969: No Revision
Correct as of Dec. 31st, 1970: No Revision	Correct as of Dec. 31st, 1970: No Revision
Correct as of Dec. 31st, 1971: No Revision	Correct as of Dec. 31st, 1971: No Revision
Correct as of Dec. 31st, 1972: No Revision	Correct as of Dec. 31st, 1972: No Revision
Correct as of Dec. 31st, 1973: No Revision	Correct as of Dec. 31st, 1973: No Revision
Correct as of Dec. 31st, 1974: No Revision	Correct as of Dec. 31st, 1974: No Revision
Correct as of Dec. 31st, 1975: No Revision	Correct as of Dec. 31st, 1975: No Revision
Correct as of Dec. 31st, 1976: No Revision	Correct as of Dec. 31st, 1976: No Revision
Correct as of Dec. 31st, 1977: No Revision	Correct as of Dec. 31st, 1977: No Revision
Correct as of Dec. 31st, 1978: No Revision	Correct as of Dec. 31st, 1978: No Revision
Correct as of Dec. 31st, 1979: No Revision	Correct as of Dec. 31st, 1979: No Revision
Correct as of Dec. 31st, 1980: No Revision	Correct as of Dec. 31st, 1980: No Revision

W. J. & S. R. R. CAPE MAY DIV.

RIGHT OF WAY AND TRACK MAP
WEST JERSEY & SEASHORE R. R.

STATION 445+00 TO STATION 497+00

SCALE 1" = 100'
1" = 200'

JUNE 30, 1910

OFFICE OF VALUATION ENGINEER
PHILADELPHIA, PA.

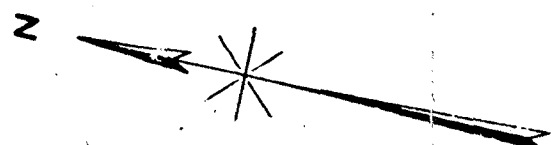
V23
7

3210

WJ-S-CRC-RPI-4

THIS TRACING IS 50% ORIGINAL SIZE.
DRAFTSMAN TO DOUBLE SCALE

FILED AND RECORDED
OCT 12 1978
DONALD LAN.
SECRETARY OF STATE



Correct as of Dec. 31st, 1912	No	Revision
Correct as of Dec. 31st, 1941	No	Revision
Correct as of Dec. 31st, 1940	No	Revision
Correct as of Dec. 31st, 1939	Map	Revised
Correct as of Dec. 31st, 1938	Map	Revised
Correct as of Dec. 31st, 1938	Map	Revised
Correct as of Dec. 31st, 1937	No	Revision
Correct as of Dec. 31st, 1936	Map	Revised
Correct as of Dec. 31st, 1935	No	Revision
Correct as of Dec. 31st, 1934	Map	Revised
Correct as of Dec. 31st, 1933	No	Revision
Correct as of Dec. 31st, 1932	No	Revision
Correct as of Dec. 31st, 1931	No	Revision
Correct as of Dec. 31st, 1930	Map	Revised

NOTE
STATION 867+48 ON THIS MAP EQUALS STATION 867+20
ON R. E. DEPT. LAND MAP NO. 33, ATLAS No. 146.

	Correct as of Dec 31, 1919	Mop Revised
	Correct as of Dec 31, 1920	Mop Revised
	Correct as of Dec 31, 1926	No Revision
	Correct as of vote 31, 1927	No Revision
	Correct as of June 30, 1918	Mop Revised
	Correct as of June 30, 1915	Mop Revised
	Correct up of July 30, 1916	No Revision
	Correct as of June 30, 1913	No Revision
	Correct as of June 30, 1912	Mop Revised
	Correct as of June 30, 1911	No Revisions
	Correct as of June 30, 1910	No Revisions
	Correct as of June 30, 1919	No Revisions
	Correct as of June 30, 1918	No Revisions
	Correct as of June 30, 1917	No Revisions

Correct as of Dec. 31st, 1955-Map	Revised
Correct as of Dec. 31st, 1954-No	Revision
Correct as of Dec. 31st, 1953-Map	Revised
Correct as of Dec. 31st, 1952-No	Revision
Correct as of Dec. 31st, 1951-No	Revision
Correct as of Dec. 31st, 1950-No	Revision
Correct as of Dec. 31st, 1949-Map	Revised
Correct as of Dec. 31st, 1948-No	Revision
Correct as of Dec. 31st, 1947-No	Revision
Correct as of Dec. 31st, 1946-Map	Revised
Correct as of Dec. 31st, 1945-Map	Revised
Correct as of Dec. 31st, 1944-No	Revision
Correct as of Dec. 31st, 1943-No	Revision

W. J. & S. R. R.

CAPE MAY DIV.

RIGHT OF WAY AND TRACK MAP
WEST JERSEY & SEASHORE R. R.

STATION 867+48 TO STATION 920+28
SCALE 1" = 100' 1 IN. = 200 FT. JUNE 30, 1961
OFFICE OF VALUATION ENGINEER
PHILADELPHIA, PA.

V23
15

4 of 10

CLASHORO TOWNSHIP, GLOUCESTER COUNTY

Листы 46 Maps 35, 36, 37 *JS*

A-NJBPPPP2P-8
B. " 211

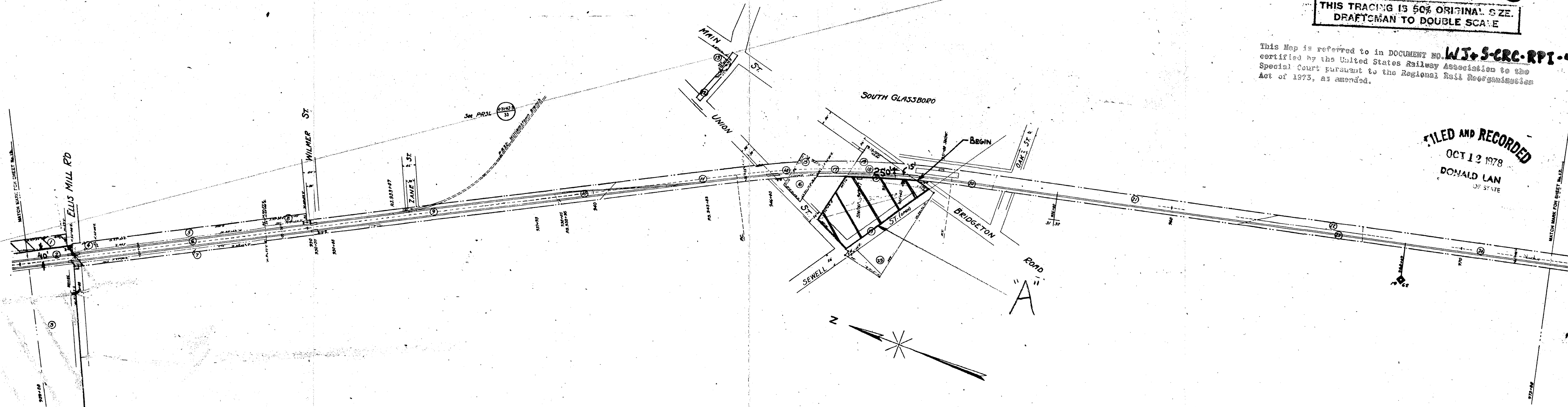
OWNER	VALUATION	SUB. DIV.	SHEET NUMBER	REAL ESTATE REGION
909	8588	3	16	2

1668 5 OF 6

THIS TRACING IS 50% ORIGINAL SIZE.
DRAFTSMAN TO DOUBLE SCALE

This Map is referred to in DOCUMENT NO. **WJ+S-CRC-RP1-4**
certified by the United States Railway Association to the
Special Court pursuant to the Regional Rail Reorganization
Act of 1973, as amended.

FILED AND RECORDED
OCT 12 1978
DONALD LAN
OF STATE



AD OF DEC. 31	REVISION	YES	NO
1887			
1888			
1889			
1890			
1891			
1892			
1893			
1894			
1895			
1896			
1897			
1898			
1899			
1900			
1901			
1902			
1903			
1904			
1905			
1906			
1907			
1908			
1909			
1910			
1911			
1912			
1913			
1914			
1915			
1916			
1917			
1918			
1919			
1920			
1921			
1922			
1923			
1924			
1925			
1926			
1927			
1928			
1929			
1930			
1931			
1932			
1933			
1934			
1935			
1936			
1937			
1938			
1939			
1940			
1941			
1942			
1943			
1944			
1945			
1946			
1947			
1948			
1949			
1950			
1951			
1952			
1953			
1954			
1955			
1956			
1957			
1958			
1959			
1960			
1961			
1962			
1963			
1964			
1965			
1966			
1967			
1968			
1969			

Correct as of Dec. 31st, 1955-Map Revised.
Correct as of Dec. 31st, 1954-Map Revised.
Correct as of Dec. 31st, 1953-Map Revised.
Correct as of Dec. 31st, 1952-Map Revised.
Correct as of Dec. 31st, 1951-Map Revised.
Correct as of Dec. 31st, 1950-Map Revised.
Correct as of Dec. 31st, 1949-Map Revised.
Correct as of Dec. 31st, 1948-Map Revised.
Correct as of Dec. 31st, 1947-Map Revised.
Correct as of Dec. 31st, 1946-Map Revised.
Correct as of Dec. 31st, 1945-Map Revised.
Correct as of Dec. 31st, 1944-Map Revised.
Correct as of Dec. 31st, 1943-Map Revised.
Correct as of Dec. 31st, 1942-Map Revised.
Correct as of Dec. 31st, 1941-Map Revised.
Correct as of Dec. 31st, 1940-Map Revised.

Correct as of Dec. 31st, 1939-Map Revised.
Correct as of Dec. 31st, 1938-Map Revised.
Correct as of Dec. 31st, 1937-Map Revised.
Correct as of Dec. 31st, 1936-Map Revised.
Correct as of Dec. 31st, 1935-Map Revised.
Correct as of Dec. 31st, 1934-Map Revised.
Correct as of Dec. 31st, 1933-Map Revised.
Correct as of Dec. 31st, 1932-Map Revised.
Correct as of Dec. 31st, 1931-Map Revised.
Correct as of Dec. 31st, 1930-Map Revised.
Correct as of Dec. 31st, 1929-Map Revised.
Correct as of Dec. 31st, 1928-Map Revised.
Correct as of Dec. 31st, 1927-Map Revised.
Correct as of Dec. 31st, 1926-Map Revised.
Correct as of Dec. 31st, 1925-Map Revised.
Correct as of Dec. 31st, 1924-Map Revised.
Correct as of Dec. 31st, 1923-Map Revised.
Correct as of Dec. 31st, 1922-Map Revised.
Correct as of Dec. 31st, 1921-Map Revised.
Correct as of Dec. 31st, 1920-Map Revised.
Correct as of Dec. 31st, 1919-Map Revised.
Correct as of Dec. 31st, 1918-Map Revised.
Correct as of Dec. 31st, 1917-Map Revised.
Correct as of Dec. 31st, 1916-Map Revised.
Correct as of Dec. 31st, 1915-Map Revised.
Correct as of Dec. 31st, 1914-Map Revised.
Correct as of Dec. 31st, 1913-Map Revised.
Correct as of Dec. 31st, 1912-Map Revised.
Correct as of Dec. 31st, 1911-Map Revised.
Correct as of Dec. 31st, 1910-Map Revised.

W. J. & S. R. R. CAPE MAY DIV.
RIGHT OF WAY AND TRACK MAP
WEST JERSEY & SEASHORE R. R.
STATION 920+00 TO STATION 978+00
SCALE 1" = 100' 1/4" = 200' 1/2" = 300'
OFFICE OF VALUATION ENGINEER
PHILADELPHIA, PA.
JUNE 30, 1910

CORRECT
VALUATION ENGINEER

V23
16

5 of 10

3,825
A-W. R. P. P. 22.3
Drawn 46 maps 37, 38, and 39

GLASSBORO TOWNSHIP, GLOUCESTER COUNTY

395

Paul H. Davis

3909-22

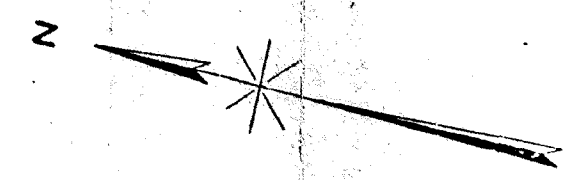
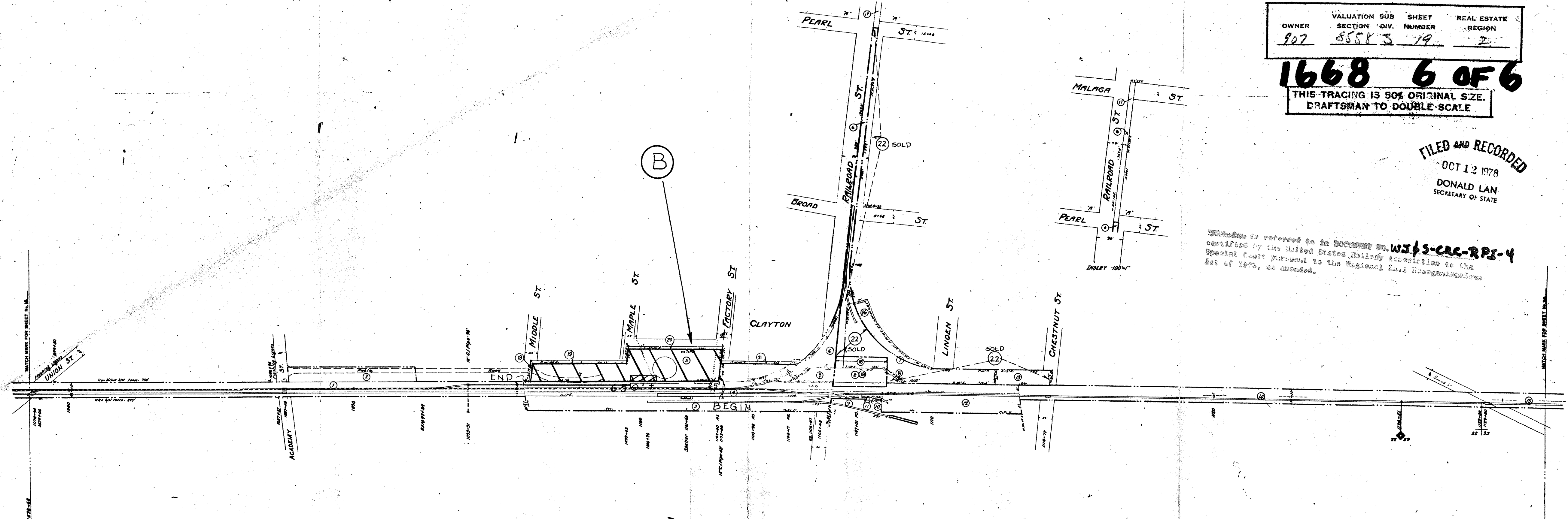
OWNER	VALUATION	SUB	SHEET	REAL ESTATE
SECTION	DIV.	NUMBER	REGION	
907	8558	3	19	2

1668 6 OF 6

THIS TRACING IS 50% ORIGINAL SIZE.
DRAFTSMAN TO DOUBLE SCALE

FILED AND RECORDED
OCT 12 1978
DONALD LAN
SECRETARY OF STATE

Reference is referred to in DOCUMENT NO. WJPS-CAL-RPS-4
certified by the United States Railway Association to the
Special Court pursuant to the National Rail Reorganization
Act of 1970, as amended.



DATE	REVISION	BY
1987		
1988		
1989		
1990		
1991		
1992		
1993		
1994		
1995		
1996		
1997		
1998		
1999		
2000		
2001		
2002		
2003		
2004		
2005		
2006		
2007		
2008		
2009		
2010		
2011		
2012		
2013		
2014		
2015		
2016		
2017		
2018		
2019		
2020		
2021		
2022		
2023		
2024		
2025		

Correct as of Dec. 31, 1987: No Revision
Correct as of Dec. 31, 1988: No Revision
Correct as of Dec. 31, 1989: No Revision
Correct as of Dec. 31, 1990: No Revision
Correct as of Dec. 31, 1991: No Revision
Correct as of Dec. 31, 1992: No Revision
Correct as of Dec. 31, 1993: No Revision
Correct as of Dec. 31, 1994: No Revision
Correct as of Dec. 31, 1995: No Revision
Correct as of Dec. 31, 1996: No Revision
Correct as of Dec. 31, 1997: No Revision
Correct as of Dec. 31, 1998: No Revision
Correct as of Dec. 31, 1999: No Revision
Correct as of Dec. 31, 2000: No Revision
Correct as of Dec. 31, 2001: No Revision
Correct as of Dec. 31, 2002: No Revision
Correct as of Dec. 31, 2003: No Revision
Correct as of Dec. 31, 2004: No Revision
Correct as of Dec. 31, 2005: No Revision
Correct as of Dec. 31, 2006: No Revision
Correct as of Dec. 31, 2007: No Revision
Correct as of Dec. 31, 2008: No Revision
Correct as of Dec. 31, 2009: No Revision
Correct as of Dec. 31, 2010: No Revision
Correct as of Dec. 31, 2011: No Revision
Correct as of Dec. 31, 2012: No Revision
Correct as of Dec. 31, 2013: No Revision
Correct as of Dec. 31, 2014: No Revision
Correct as of Dec. 31, 2015: No Revision
Correct as of Dec. 31, 2016: No Revision
Correct as of Dec. 31, 2017: No Revision
Correct as of Dec. 31, 2018: No Revision
Correct as of Dec. 31, 2019: No Revision
Correct as of Dec. 31, 2020: No Revision
Correct as of Dec. 31, 2021: No Revision
Correct as of Dec. 31, 2022: No Revision
Correct as of Dec. 31, 2023: No Revision
Correct as of Dec. 31, 2024: No Revision
Correct as of Dec. 31, 2025: No Revision

Correct as of Dec. 31, 1987: No Revision
Correct as of Dec. 31, 1988: No Revision
Correct as of Dec. 31, 1989: No Revision
Correct as of Dec. 31, 1990: No Revision
Correct as of Dec. 31, 1991: No Revision
Correct as of Dec. 31, 1992: No Revision
Correct as of Dec. 31, 1993: No Revision
Correct as of Dec. 31, 1994: No Revision
Correct as of Dec. 31, 1995: No Revision
Correct as of Dec. 31, 1996: No Revision
Correct as of Dec. 31, 1997: No Revision
Correct as of Dec. 31, 1998: No Revision
Correct as of Dec. 31, 1999: No Revision
Correct as of Dec. 31, 2000: No Revision
Correct as of Dec. 31, 2001: No Revision
Correct as of Dec. 31, 2002: No Revision
Correct as of Dec. 31, 2003: No Revision
Correct as of Dec. 31, 2004: No Revision
Correct as of Dec. 31, 2005: No Revision
Correct as of Dec. 31, 2006: No Revision
Correct as of Dec. 31, 2007: No Revision
Correct as of Dec. 31, 2008: No Revision
Correct as of Dec. 31, 2009: No Revision
Correct as of Dec. 31, 2010: No Revision
Correct as of Dec. 31, 2011: No Revision
Correct as of Dec. 31, 2012: No Revision
Correct as of Dec. 31, 2013: No Revision
Correct as of Dec. 31, 2014: No Revision
Correct as of Dec. 31, 2015: No Revision
Correct as of Dec. 31, 2016: No Revision
Correct as of Dec. 31, 2017: No Revision
Correct as of Dec. 31, 2018: No Revision
Correct as of Dec. 31, 2019: No Revision
Correct as of Dec. 31, 2020: No Revision
Correct as of Dec. 31, 2021: No Revision
Correct as of Dec. 31, 2022: No Revision
Correct as of Dec. 31, 2023: No Revision
Correct as of Dec. 31, 2024: No Revision
Correct as of Dec. 31, 2025: No Revision

Correct as of Dec. 31, 1987: No Revision
Correct as of Dec. 31, 1988: No Revision
Correct as of Dec. 31, 1989: No Revision
Correct as of Dec. 31, 1990: No Revision
Correct as of Dec. 31, 1991: No Revision
Correct as of Dec. 31, 1992: No Revision
Correct as of Dec. 31, 1993: No Revision
Correct as of Dec. 31, 1994: No Revision
Correct as of Dec. 31, 1995: No Revision
Correct as of Dec. 31, 1996: No Revision
Correct as of Dec. 31, 1997: No Revision
Correct as of Dec. 31, 1998: No Revision
Correct as of Dec. 31, 1999: No Revision
Correct as of Dec. 31, 2000: No Revision
Correct as of Dec. 31, 2001: No Revision
Correct as of Dec. 31, 2002: No Revision
Correct as of Dec. 31, 2003: No Revision
Correct as of Dec. 31, 2004: No Revision
Correct as of Dec. 31, 2005: No Revision
Correct as of Dec. 31, 2006: No Revision
Correct as of Dec. 31, 2007: No Revision
Correct as of Dec. 31, 2008: No Revision
Correct as of Dec. 31, 2009: No Revision
Correct as of Dec. 31, 2010: No Revision
Correct as of Dec. 31, 2011: No Revision
Correct as of Dec. 31, 2012: No Revision
Correct as of Dec. 31, 2013: No Revision
Correct as of Dec. 31, 2014: No Revision
Correct as of Dec. 31, 2015: No Revision
Correct as of Dec. 31, 2016: No Revision
Correct as of Dec. 31, 2017: No Revision
Correct as of Dec. 31, 2018: No Revision
Correct as of Dec. 31, 2019: No Revision
Correct as of Dec. 31, 2020: No Revision
Correct as of Dec. 31, 2021: No Revision
Correct as of Dec. 31, 2022: No Revision
Correct as of Dec. 31, 2023: No Revision
Correct as of Dec. 31, 2024: No Revision
Correct as of Dec. 31, 2025: No Revision

W. J. & S. R. R. CAPE MAY DIV.
RIGHT OF WAY AND TRACK MAP
WEST JERSEY & SEASHORE R. R.
STATION 1078+60 TO STATION 1151+40
JUNE 30, 1916

1" = 200'

V23
19

CLAYTON BOROUGH, GLOUCESTER COUNTY
N. J.

B = NJB 000 24-7

Shower 46 Map 44, 45 and 46

3,826

6 of 10

25