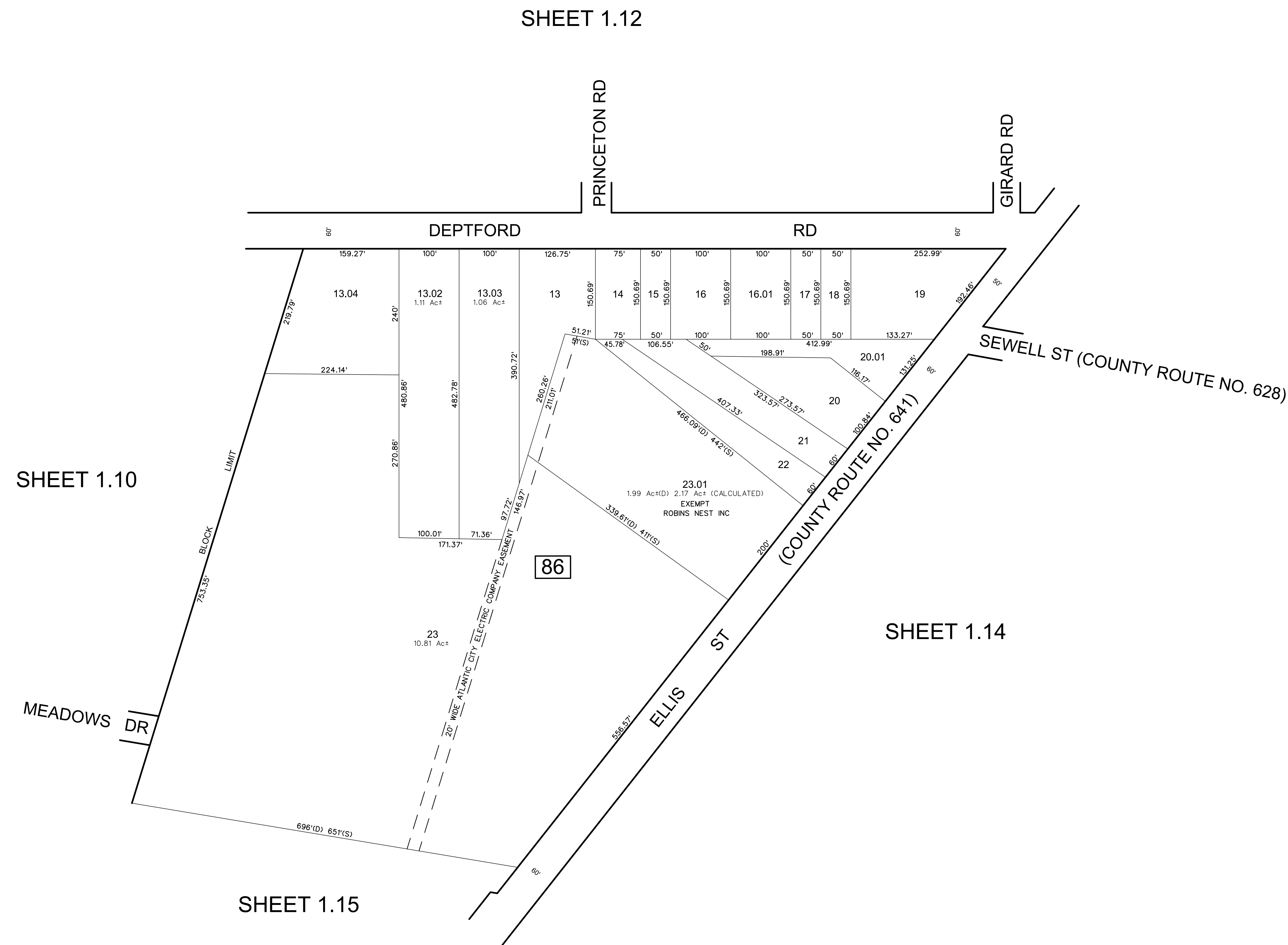
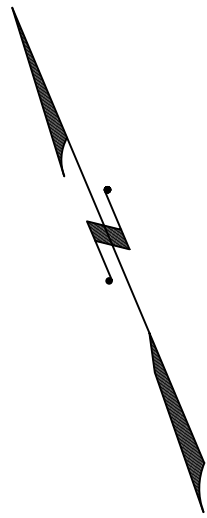


REVISIONS				
DATE	BY	LIC.NO	BLOCK	LOT
09/2011	CHARLES A. ATKINSON-ARH	33994	86	13.01,23-24
08/2024	CHARLES E. ADAMSON-RVE	42627	86	23.01-DIMENSIONS

\* THIS SHEET HAS BEEN DRAWN USING COMPUTER AIDED DRAFTING/  
DESIGN (CAD/D) AND COORDINATE GEOMETRY (COGO).



THIS MAP HAS BEEN GIVEN A  
FORMAL CERTIFICATION BY THE  
DIVISION OF TAXATION ON  
OCTOBER 15, 2010, SIGNED  
BY THOMAS S REILLY, CTA AND  
ASSIGNED SERIAL NUMBER 959

**TAX MAP**  
**BOROUGH OF GLASSBORO**  
GLOUCESTER COUNTY NEW JERSEY  
SCALE: 1" = 100' DATE: 4-26-2007  
**CHARLES E. ADAMSON** NJ PROFESSIONAL LAND SURVEYOR LIC. NO. 42627  
**REMINGTON & VERNICK ENGINEERS**  
232 KINGS HIGHWAY EAST HADDONFIELD, N.J. 08033  
(856) 795-9595, FAX (856) 795-4882  
WEB SITE ADDRESS: WWW.RVE.COM