

Rev.	Description	Date	Designer	Approved	Ref.
B	Div justering etter prototyp	12.07.2017	TET	TET	
C	Lagt til klistremerke, art. 10285	10.02.2020	UM		A-600
D	Endret 21530 til å ha valset Hardox i toppen	19.11.2021	CMP		A-1225
E	Endret nedbrekksklaff	13.01.2023	BAL	HSC	EO-726

33	2	21676	Låseskrue M12X70
32	4	21572	Glidekloss
31	1	21530	Øvre kanal lastetut Sveist
30	1	21529	Bunnseksjon teleskoptut
29	1	21528	Sylinder 50x30x1000
28	2	21527	Glideskinne
27	1	21525	Tutbeskyttelse
26	1	21523	Påskrudd forsterkning nedre del
25	4	20269	Låsering utvendig Ø25 aksel rustfri
24	1	16894	Ekstra nedbrekksklaff 220/240/225
23	2	16345	3/8" Slange 5000mm ISO hann-3/8" 90°
22	1	14843	Fettnippel M6 rett
21	6	13841	Underlagsskive M12 stor utv
20	7	12935	Foring Ø20x10mm
19	2	12652	Stag for ekstranedbrekk
18	2	12211	Splint 4 x 25mm
17	14	11926	Underlagsskiver M10
16	14	11840	Låseskrue M10X30
15	3	10977	Bolt for nedbrekk m/øre
14	1	25522	Nedbrekksklaff for tut 10025
13	1	10963	Bolt for nedbrekk 220/225/240
12	2	10364	Underlagsskiver M16
11	10	10293	Underlagsskiver M8
10	1	10285	Merke "Tokvam" logo stor
9	10	10204	Sekskantskrue M8x20 helgjenget
8	1	10188	Sylinder 40x25x120
7	2	10178	3/8" Slange 3100 mm
6	1	10144	Sekskantskrue M12x40 helgjenget
5	3	10133	Underlagsskiver M12
4	14	10077	Låsemutter M10
3	7	10032	Låsemutter M12
2	4	10031	Sekskantskrue M12x35 helgjenget
1	3	10023	Fjærsplint 4x75mm

E

Pos.	QTY.	Art.no.	Description.
------	------	---------	--------------

**F200**  
Teleskopisk Lastetut F200

General tolerances according to  
ISO 13920A and ISO 2768C.  
Laser cut parts:  4/1000

**Tokvam**  
www.tokvam.no

Weight: 139.69 kg  
Material:  
Surfacefinish:None

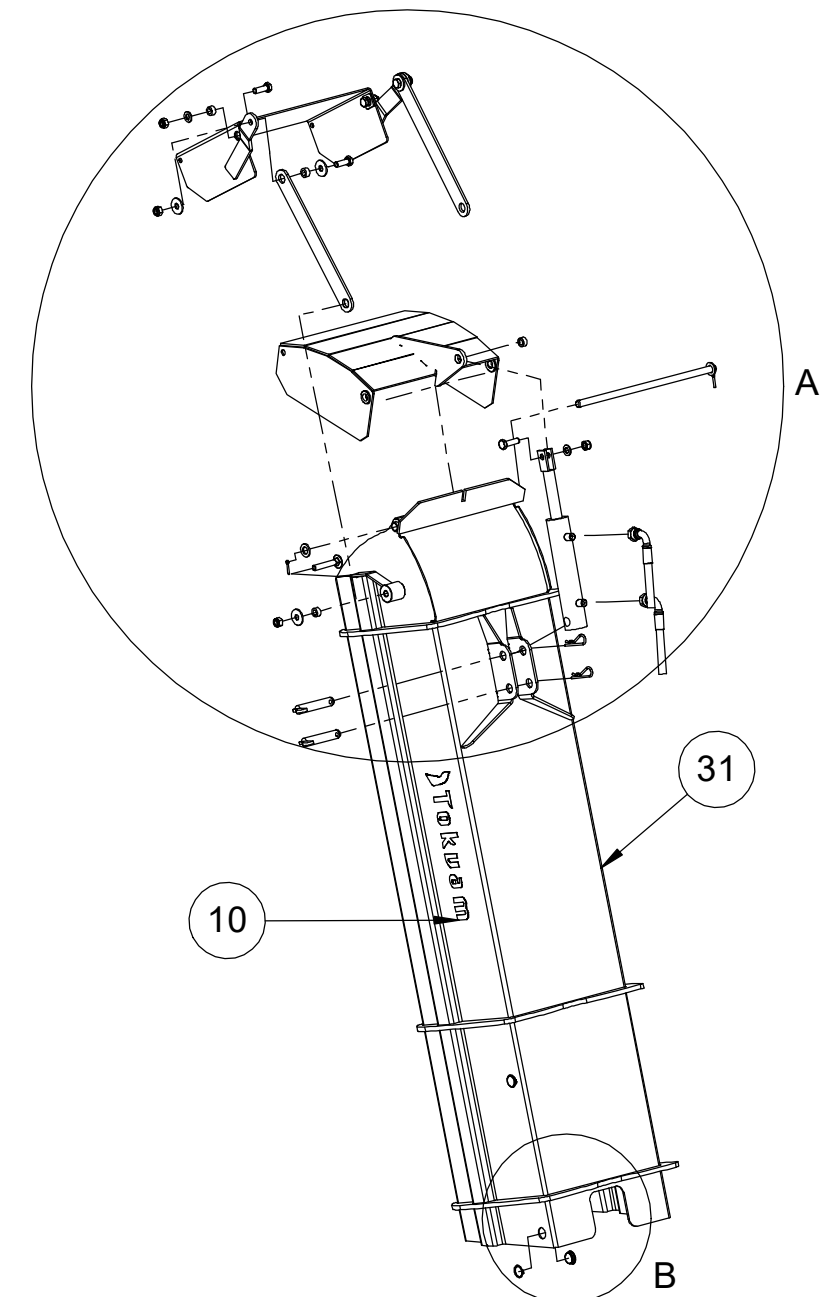
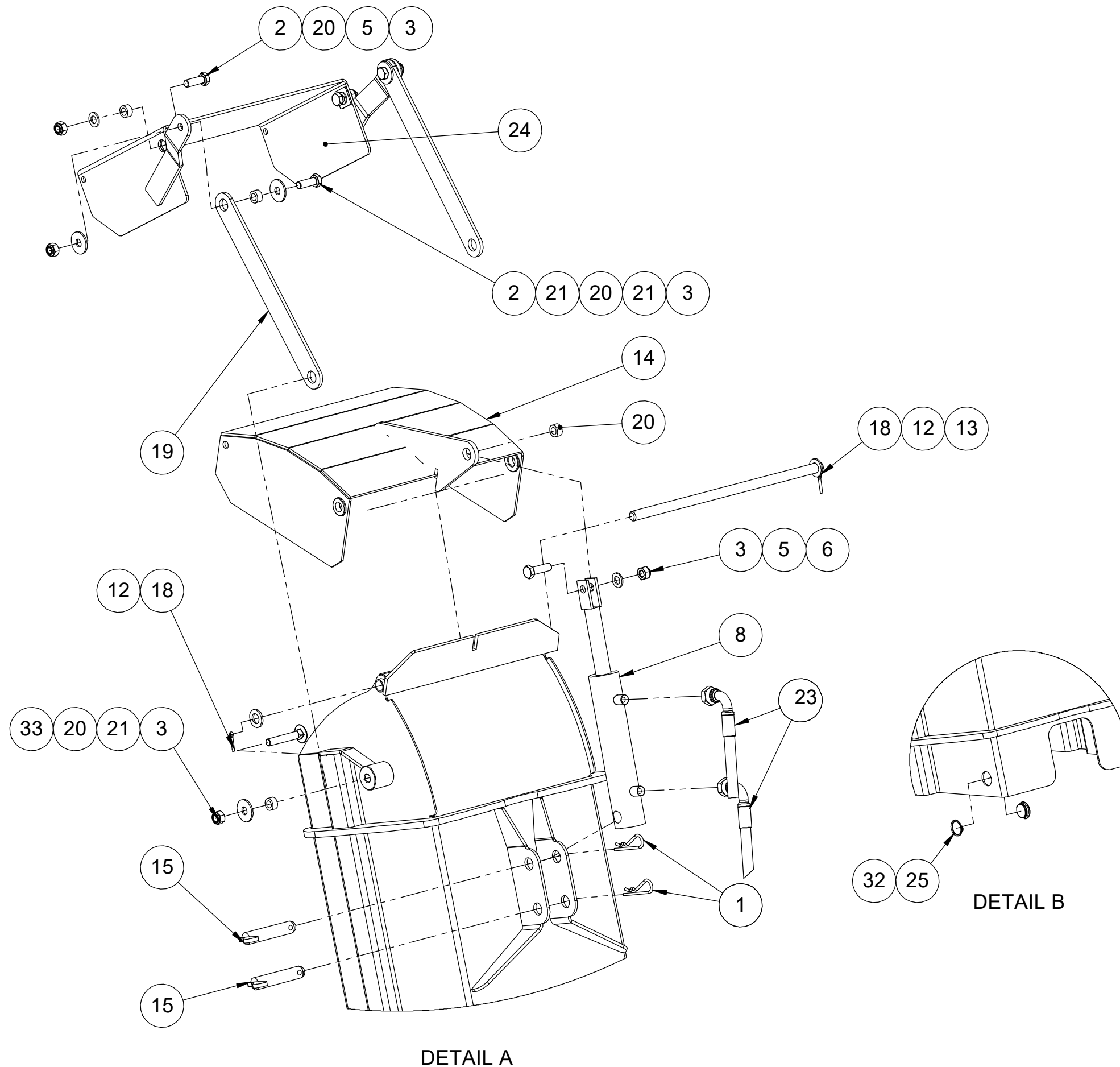
Drawing no: **TUT-5570** Sheet: **1/6**

Stock no:

**21531**



Rev.	Description	Date	Designer	Approved	Ref.
B	Div justering etter prototyp	12.07.2017	TET	TET	
C	Lagt til klistremerke, art. 10285	10.02.2020	UM		A-600
D	Endret 21530 til å ha valset Hardox i toppen	19.11.2021	CMP		A-1225
E	Endret nedbrekksklaff	13.01.2023	BAL		EO-726



**F200**  
Teleskopisk Lastetut F200

Weight: 139.69 kg  
Material:  
Surfacefinish:None

General tolerances according to  
ISO 13920A and ISO 2768C.  
Laser cut parts:  4/1000



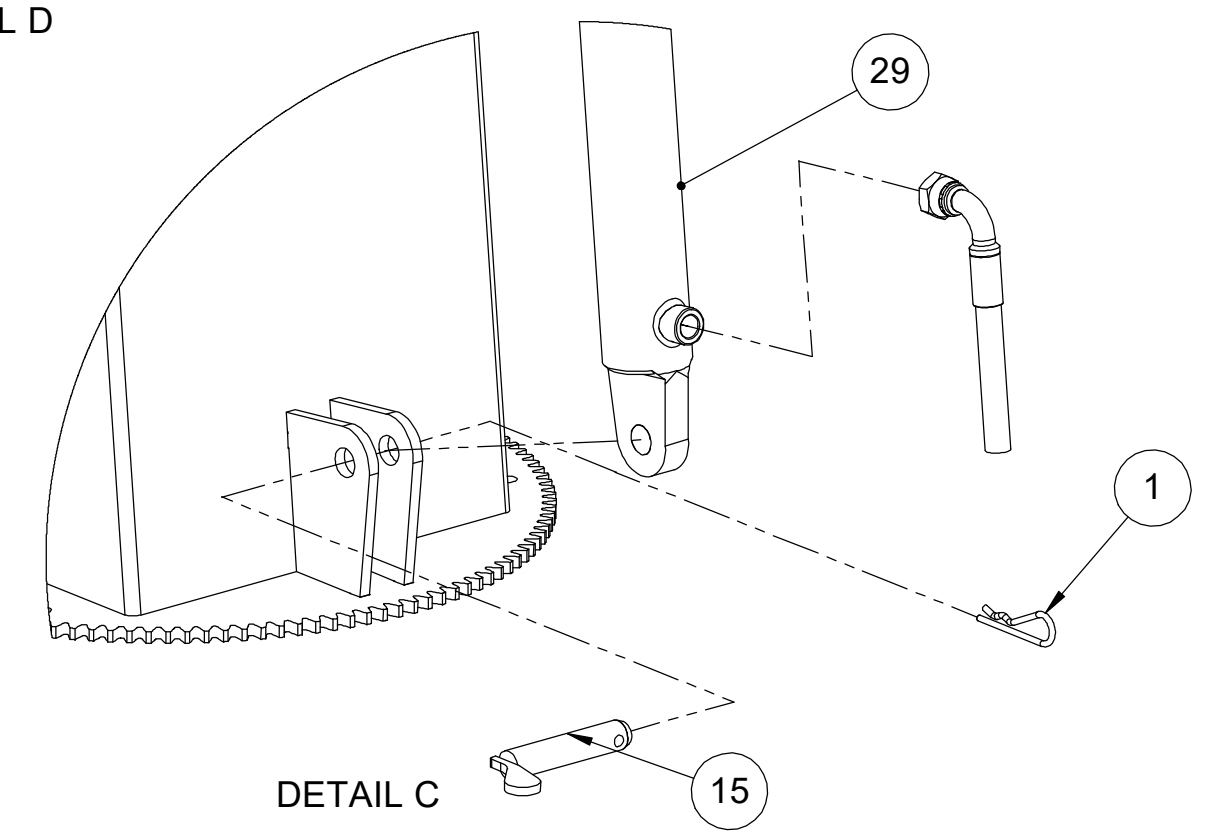
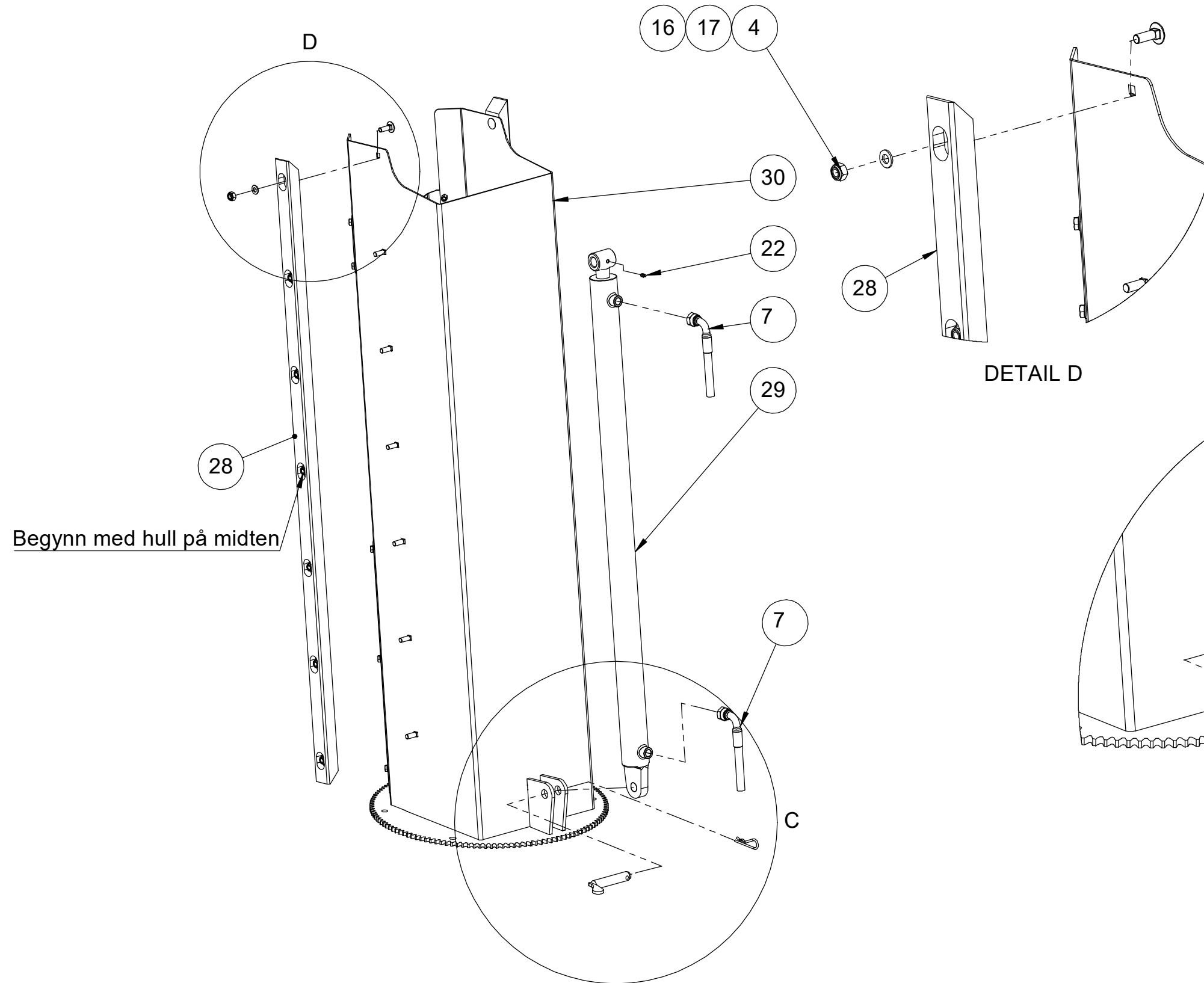
Drawing no: **TUT-5570** Sheet: **2/6**

Stock no:

**21531**



Rev.	Description	Date	Designer	Approved	Ref.
B	Div justering etter prototyp	12.07.2017	TET	TET	
C	Lagt til klistremerke, art. 10285	10.02.2020	UM		A-600
D	Endret 21530 til å ha valset Hardox i toppen	19.11.2021	CMP		A-1225
E	Endret nedbrekksklaff	13.01.2023	BAL		EO-726



**F200**  
Teleskopisk Lastetut F200

Weight: 139.69 kg  
Material:  
Surfacefinish:None

General tolerances according to  
ISO 13920A and ISO 2768C.  
Laser cut parts:  4/1000

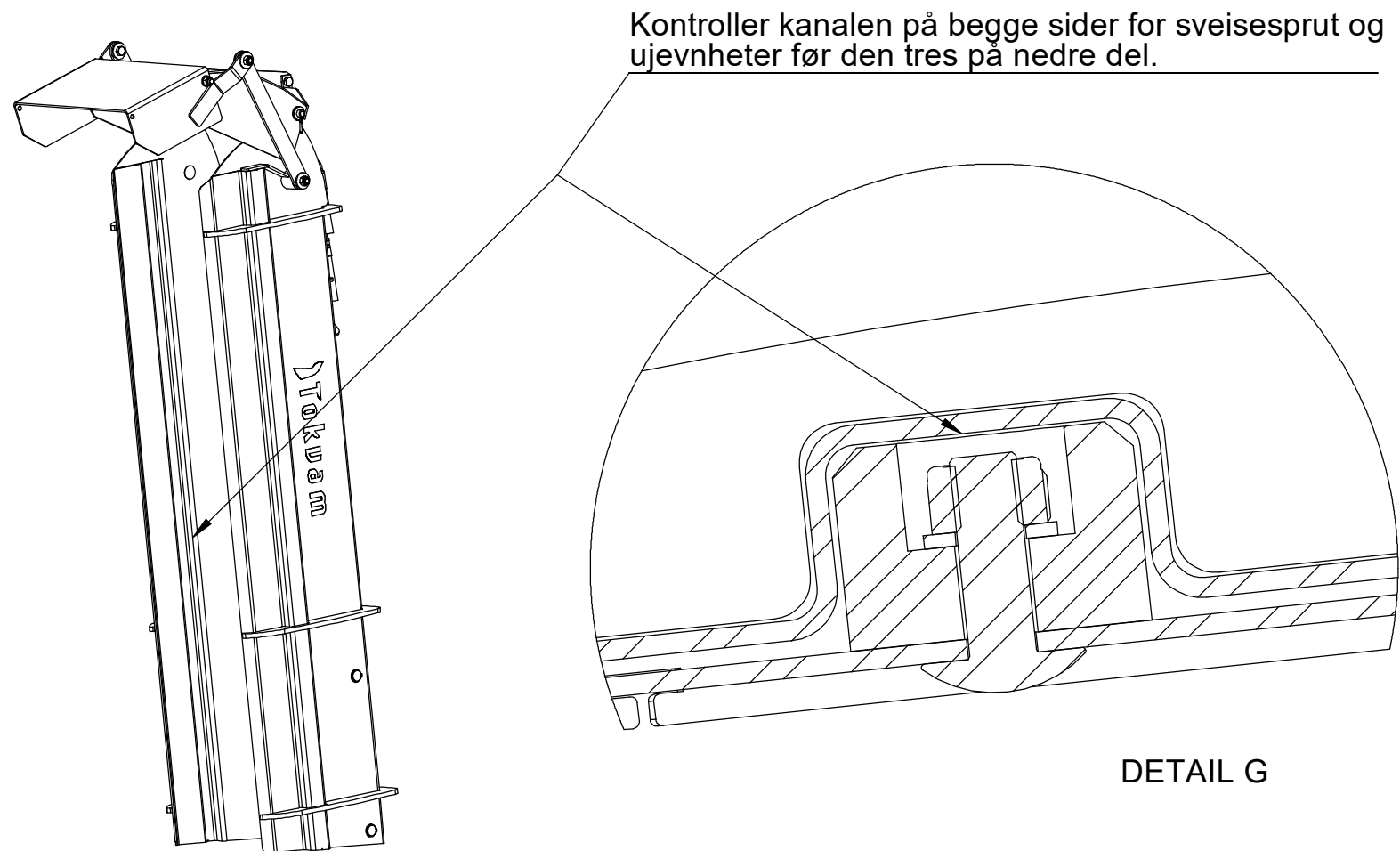


Drawing no: **TUT-5570** Sheet: **3/6**

Stock no:  
**21531**

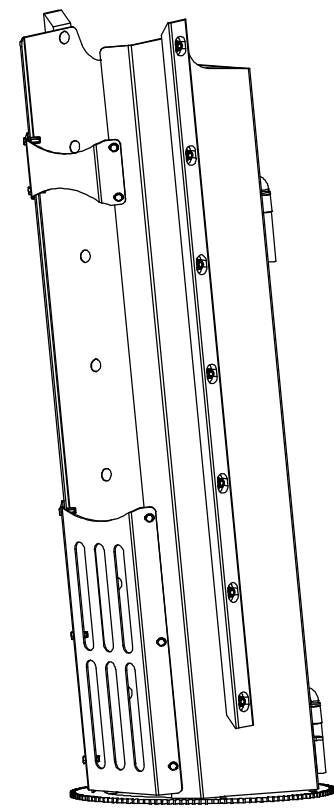
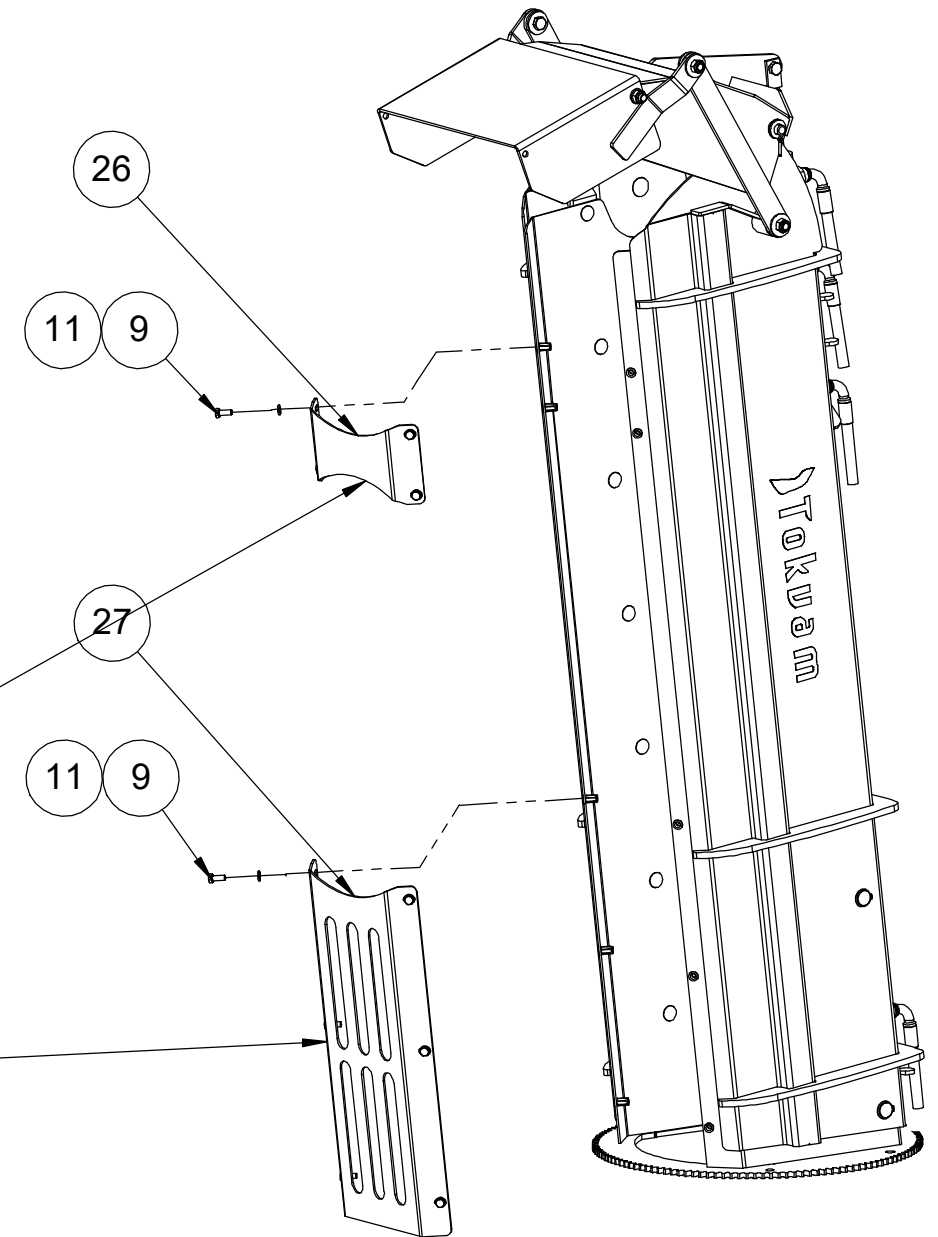


Rev.	Description	Date	Designer	Approved	Ref.
B	Div justering etter prototyp	12.07.2017	TET	TET	
C	Lagt til klistremerke, art. 10285	10.02.2020	UM		A-600
D	Endret 21530 til å ha valset Hardox i toppen	19.11.2021	CMP		A-1225
E	Endret nedbrekksklaff	13.01.2023	BAL		EO-726



DETAIL G

Monteres etter at tuten er tredd sammen



**F200**  
Teleskopisk Lastetut F200

Weight: 139.69 kg  
Material:  
Surfacefinish:None

General tolerances according to  
ISO 13920A and ISO 2768C.  
Laser cut parts:  4/1000

**Tokvam**  
www.tokvam.no

Drawing no:  
**TUT-5570**

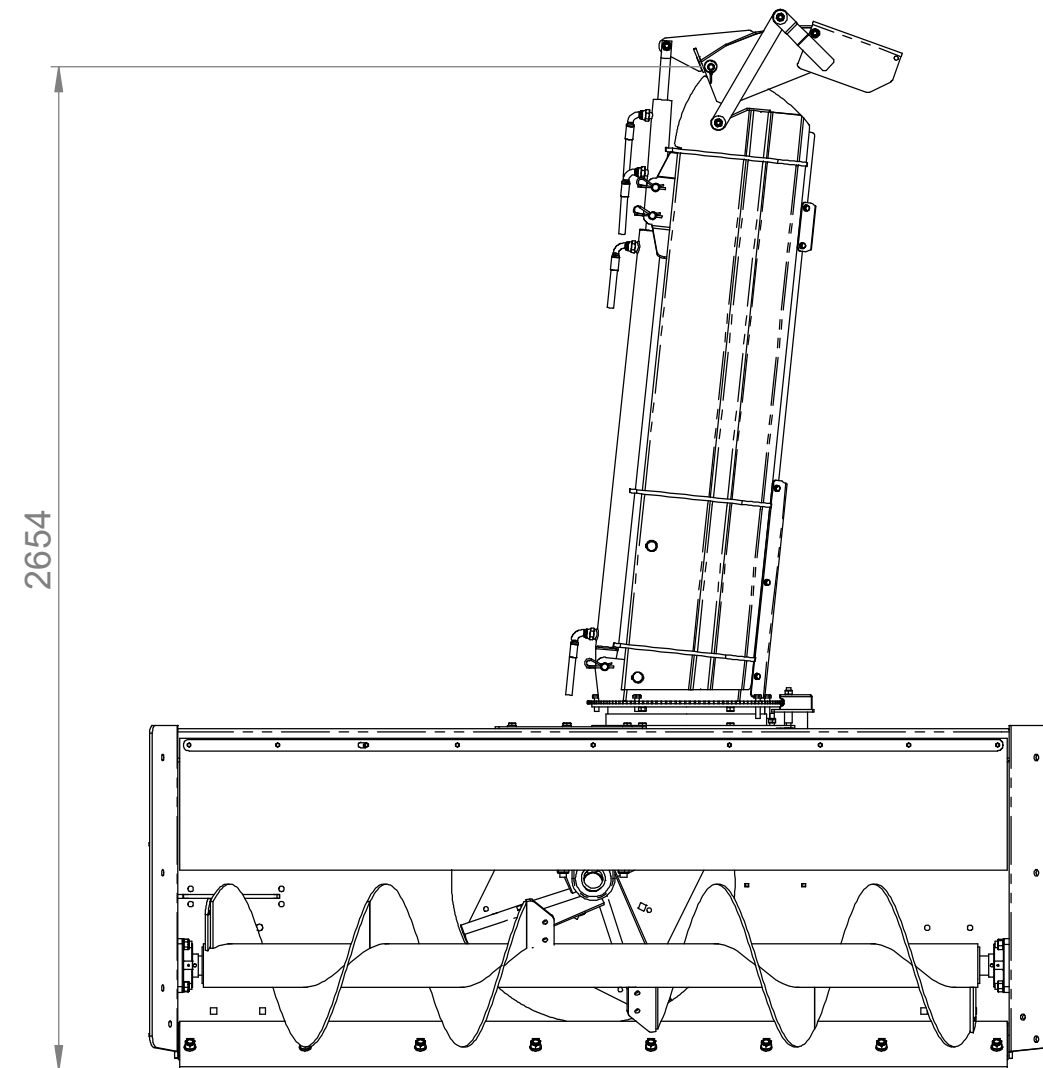
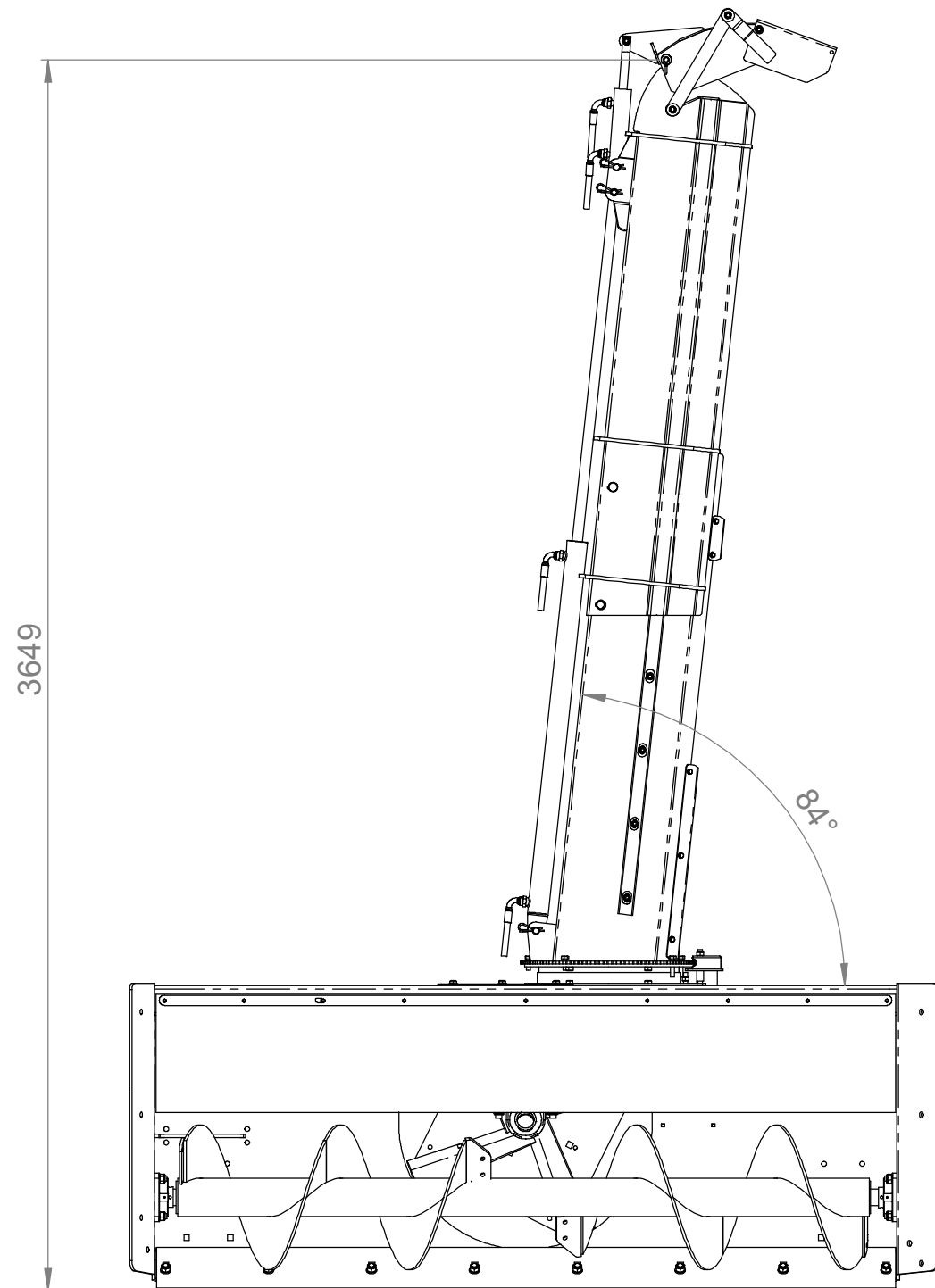
Sheet:  
**4/6**

Stock no:

**21531**



Rev.	Description	Date	Designer	Approved	Ref.
B	Div justering etter prototyp	12.07.2017	TET	TET	
C	Lagt til klistremerke, art. 10285	10.02.2020	UM		A-600
D	Endret 21530 til å ha valset Hardox i toppen	19.11.2021	CMP		A-1225
E	Endret nedbrekksklaff	13.01.2023	BAL		EO-726



**F200**  
Teleskopisk Lastetut F200

Weight: 139.69 kg  
Material:  
Surfacefinish:None



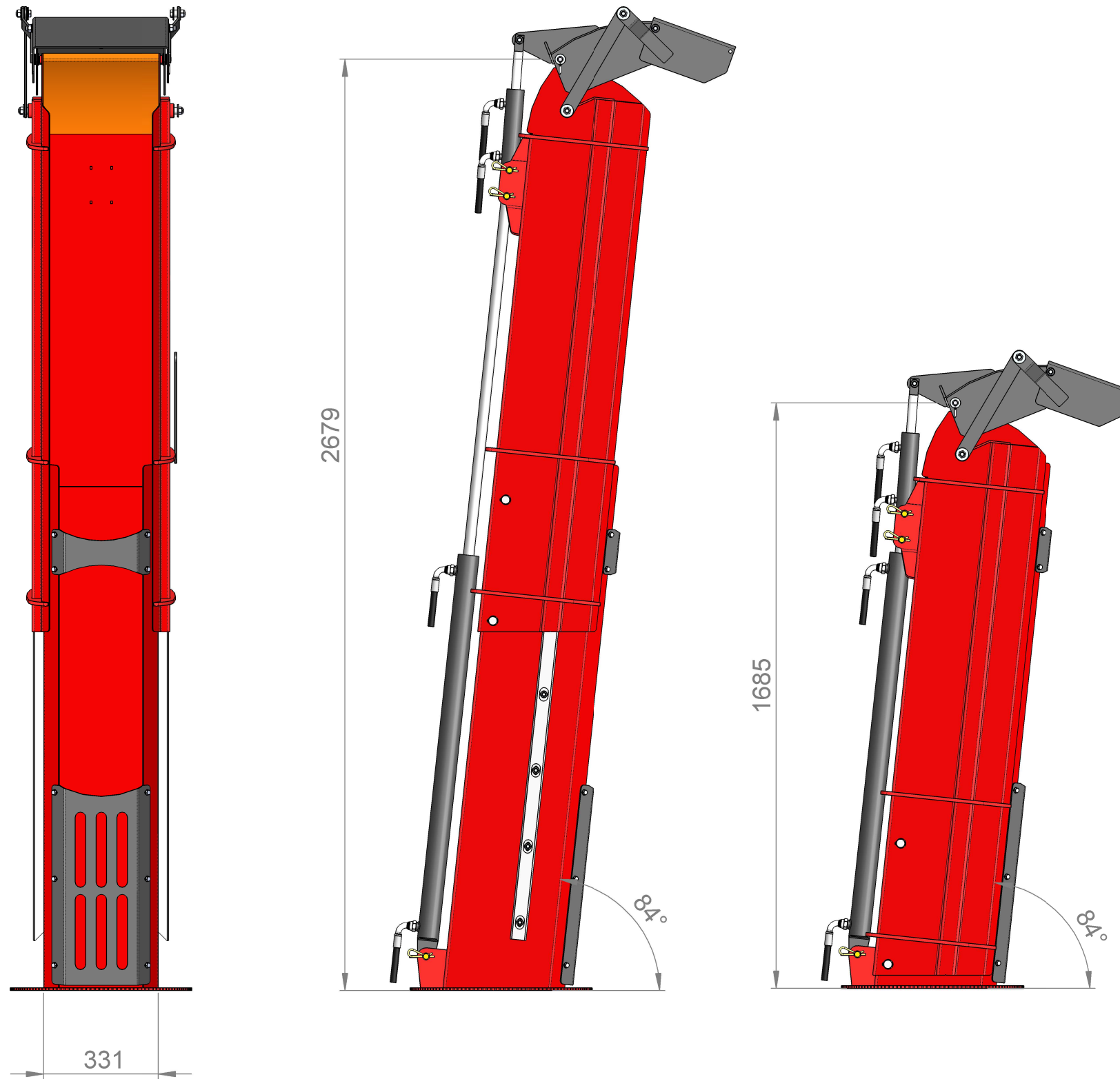
General tolerances according to  
ISO 13920A and ISO 2768C.  
Laser cut parts:  4/1000

**Tokvam**  
www.tokvam.no

Drawing no: **TUT-5570** Sheet: **5/6**

Stock no:  
**21531**

Rev.	Description	Date	Designer	Approved	Ref.
B	Div justering etter prototyp	12.07.2017	TET	TET	
C	Lagt til klistremerke, art. 10285	10.02.2020	UM		A-600
D	Endret 21530 til å ha valset Hardox i toppen	19.11.2021	CMP		A-1225
E	Endret nedbrekksklaff	13.01.2023	BAL		EO-726



**F200**  
Teleskopisk Lastetut F200

Weight: 139.69 kg  
Material:  
Surfacefinish:None

General tolerances according to  
ISO 13920A and ISO 2768C.  
Laser cut parts:  $\square$  4/1000

**Tokvam**  
www.tokvam.no

Drawing no: **TUT-5570** Sheet: **6/6**

Stock no:

**21531**

