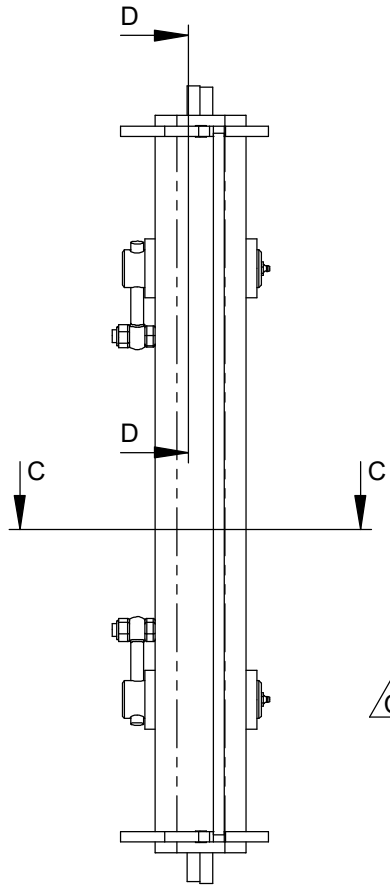
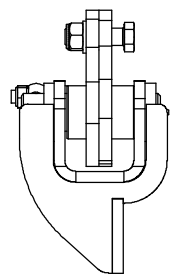


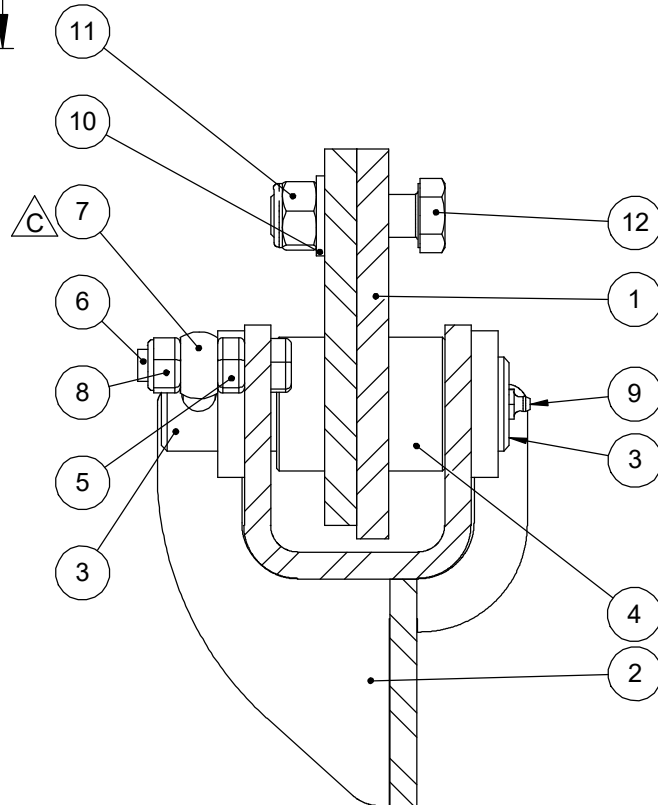
Rev.	Description	Date	Designer	Approved	Ref.
A	Tilpasset BM-feste	02.04.2014	TMB	TET	
B	Innført festemateriell og side 2	03.05.2016	TET	TET	
C	manglet ballong pos 7	11.07.2022	LK	LK	A-617



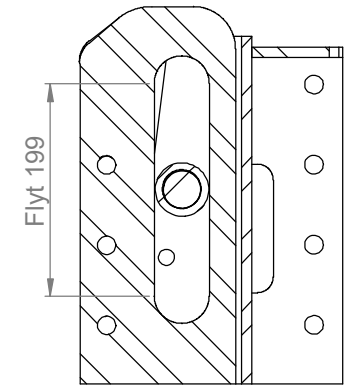
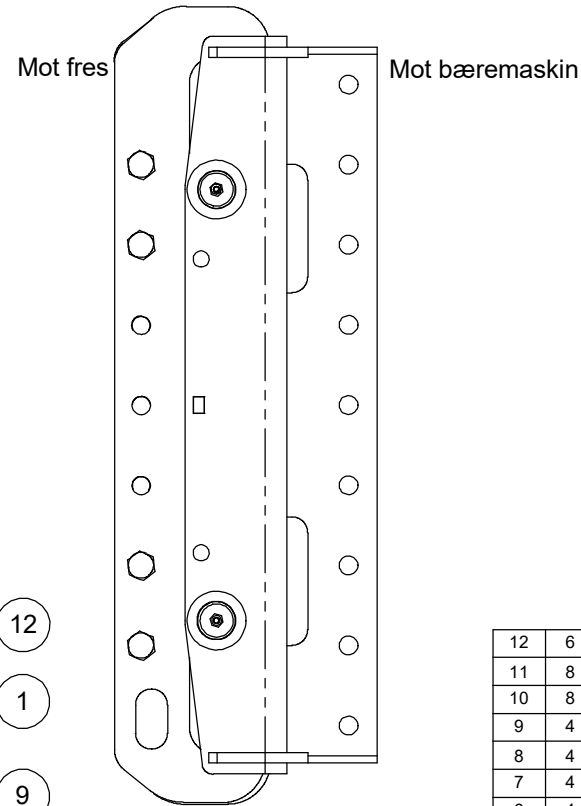
Mot fres



Mot bæremaskin



SECTION C-C
SCALE 1 : 2



SECTION D-D
SCALE 1 : 5

12	6	12255	Sekskantskrue M16x55 delgjenget
11	8	10043	Låsemutter M16
10	8	10364	Underlagsskiver M16
9	4	10137	Fettnippel M10x1,5 rett
8	4	10032	Låsemutter M12
7	4	18042	Øyeskrue M12X90
6	4	10148	Sekskantskrue M12X50 helgjenget
5	4	10205	Mutter M12
4	4	18269	Glidehylse flytramme
3	4	18268	Bolt for flytramme
2	2	18267	Feste flytramme mot innfesting
1	2	18273	Feste flytramme mot fres
Pos.	Qty.	Art.no.	Description

F200, 180H, 240H
Flytramme for

General tolerances according to
ISO 13920A and ISO 2768C.
Laser cut parts: \square 4/1000

Tokvam
www.tokvam.no

Weight: 72.57 kg
Material:
Surfacefinish:

Drawing no:
01-30181

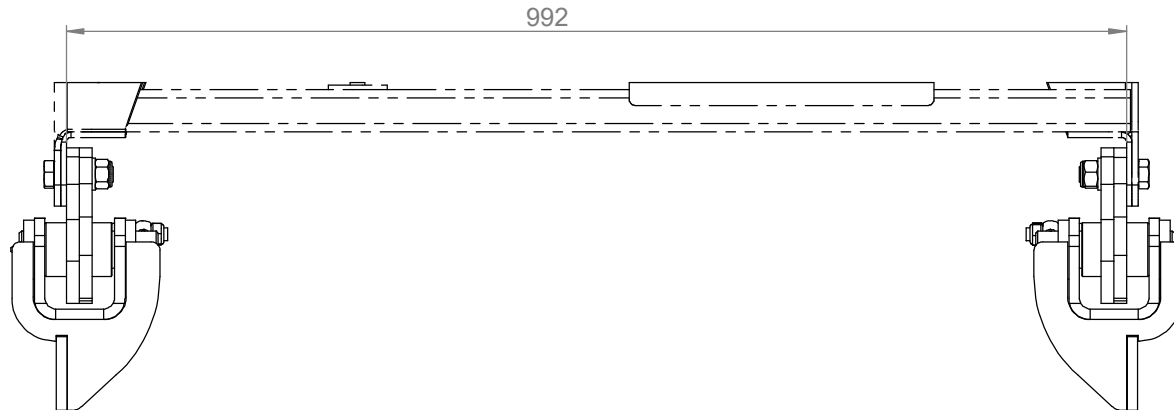
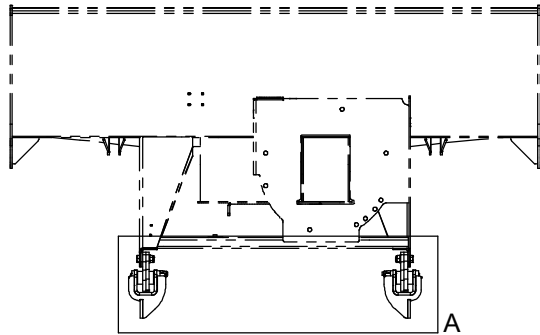
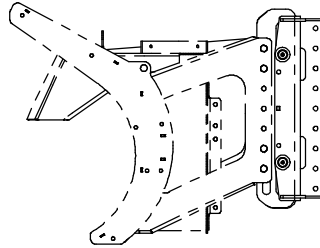
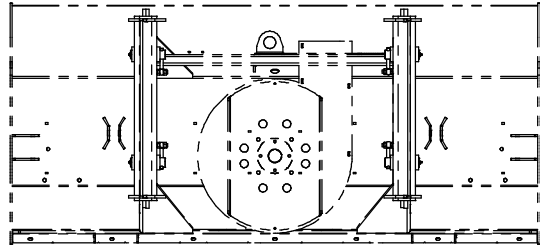
Sheet:

Stock no:

18270




Rev.	Description	Date	Designer	Approved	Ref.
A	Tilpasset BM-feste	02.04.2014	TMB	TET	
B	Innført festemateriell og side 2	03.05.2016	TET	TET	
C	manglet ballong pos 7	11.07.2022	LK	LK	A-617



DETAIL A

F200, 180H, 240H
Flytramme for

General tolerances according to
ISO 13920A and ISO 2768C.
Laser cut parts:  4/1000

Weight: 72.57 kg
Material:
Surfacefinish:


www.tokvam.no

Drawing no: **01-30181** Sheet:

Stock no:



18270