

USWG 26th of June AGENDA

Here's what we'll explore together:

- **Stephanie and Eva, USWG co-chairs**, will reflect on the **vital role of Settlement Approach**
- **Carolina and Matthew from IOM** will present their **LOCALIZE toolkit** as a practical, operational resource, illustrated through case studies
- **Pablo and Seki, Global Shelter Cluster** coordinators will close the session by exploring **how the settlement approach complements the ongoing humanitarian reset**

Reflecting on the moment:
Where are we now?

The Settlements Approach & the Reset

What the Reset calls for

Efficiency

What the Approach delivers

Settlements-based planning and response reduces fragmentation and multiplies impact

Localisation

Grounded in local contexts, capacities, actors, and systems

Accountability

Designed around community priorities and participation

Nexus

Supports coordinated planning around short- and long-term needs

How Can USWG Contribute?

- **Help translate the SA to speak to evolving coordination models**
- **Advocate for people- and place-based planning**
- **Share field learnings to shape system reform**
- **Support country-level uptake through socialization of guidance and tools**



LOCALISE

Leveraging Opportunities for Community-led, Area-based, and Locally-driven Integrated Solutions for Empowered communities

Carolina Cordero-Scales & Matthew Flynn
sheltersupport@iom.int

Why it matters now?

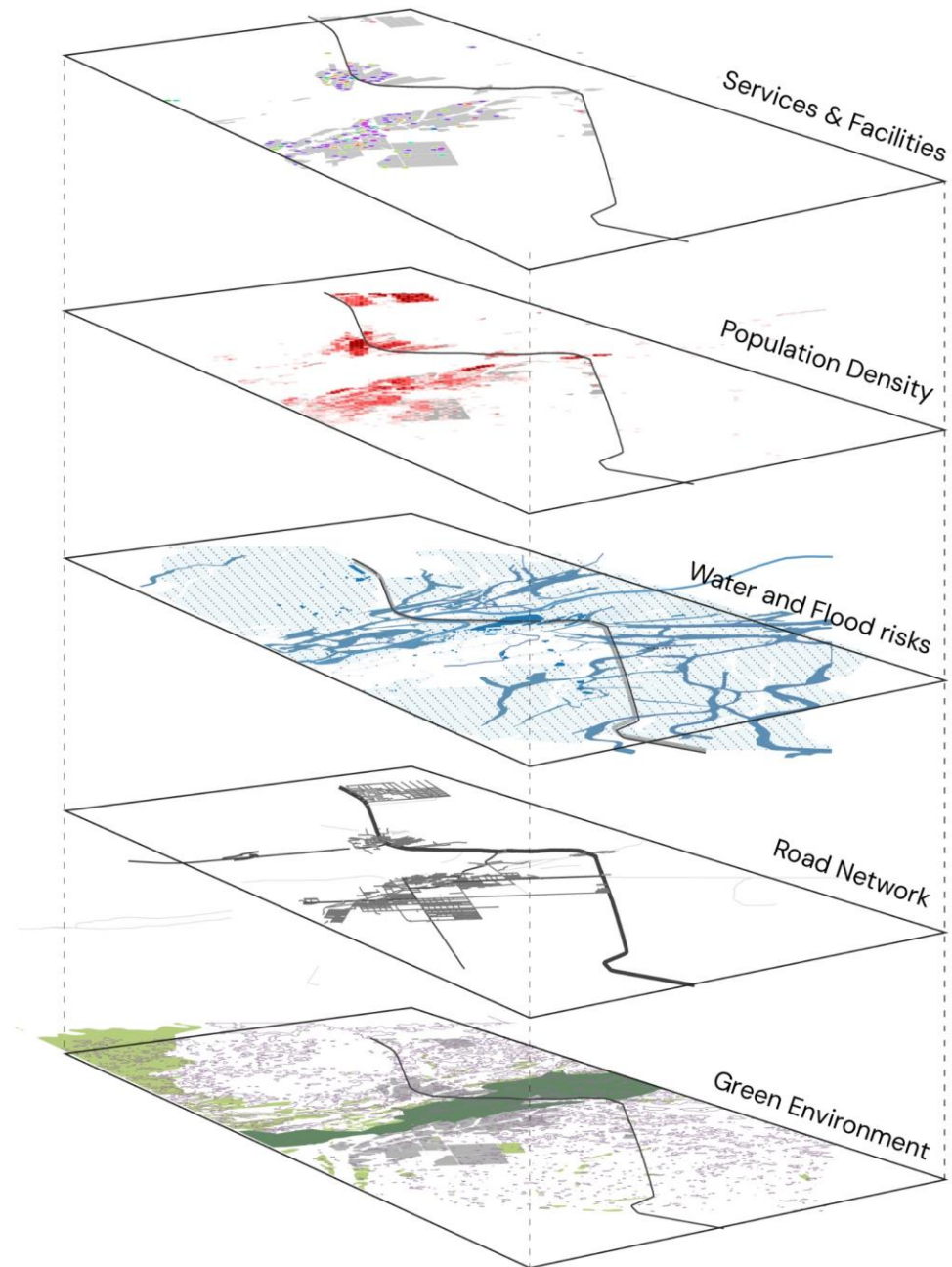
An aerial photograph of a densely packed informal settlement, likely a refugee camp, situated on a sandy beach. The settlement is composed of numerous small, closely packed dwellings with colorful, corrugated metal roofs in shades of blue, red, and grey. The settlement is bordered by a low wall on one side. In the background, the blue ocean meets the shore, with some small islands visible in the distance. The sky is clear and blue.

“1 in 8 people worldwide is on the move”

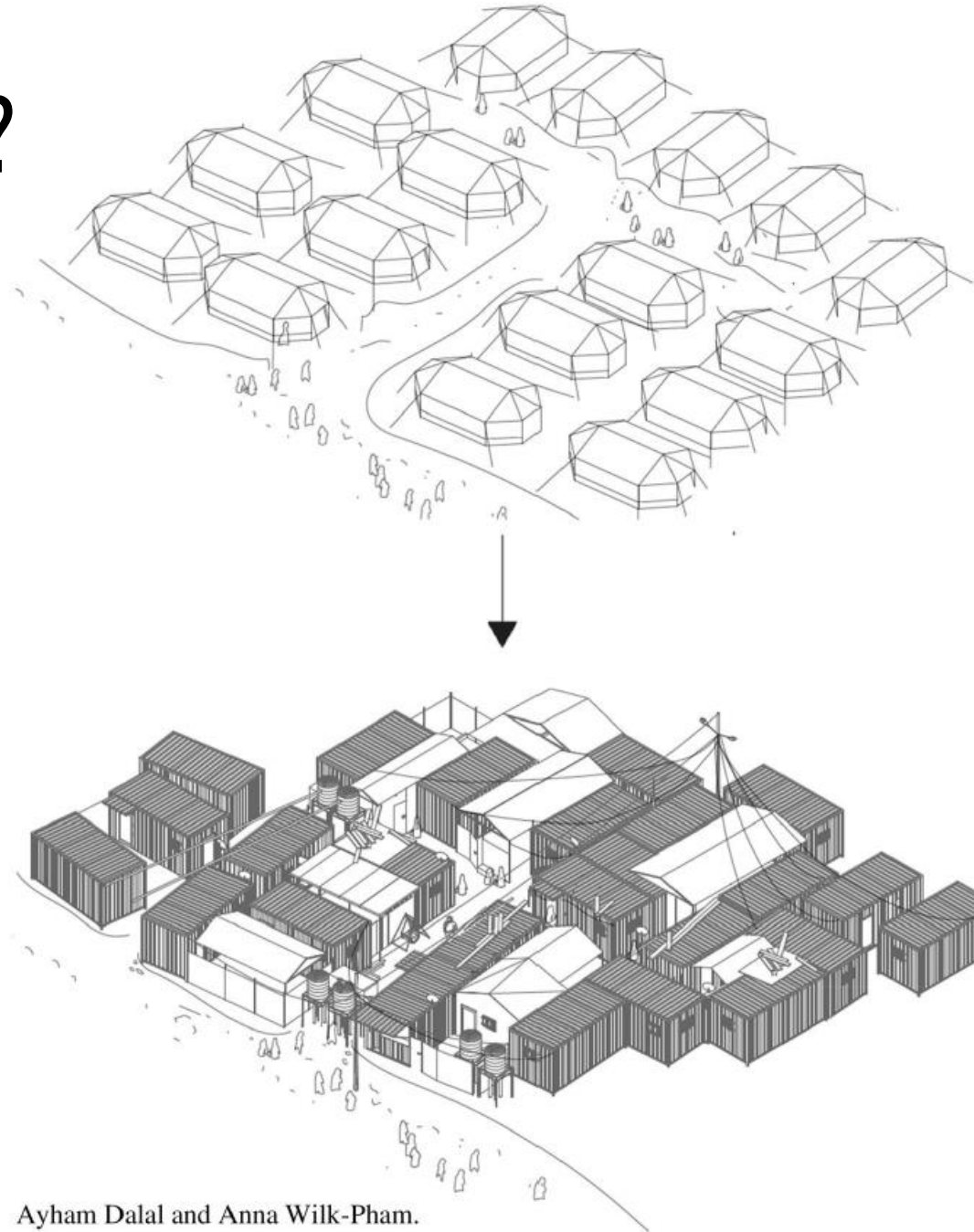
Why it matters now?



Why it matters now?

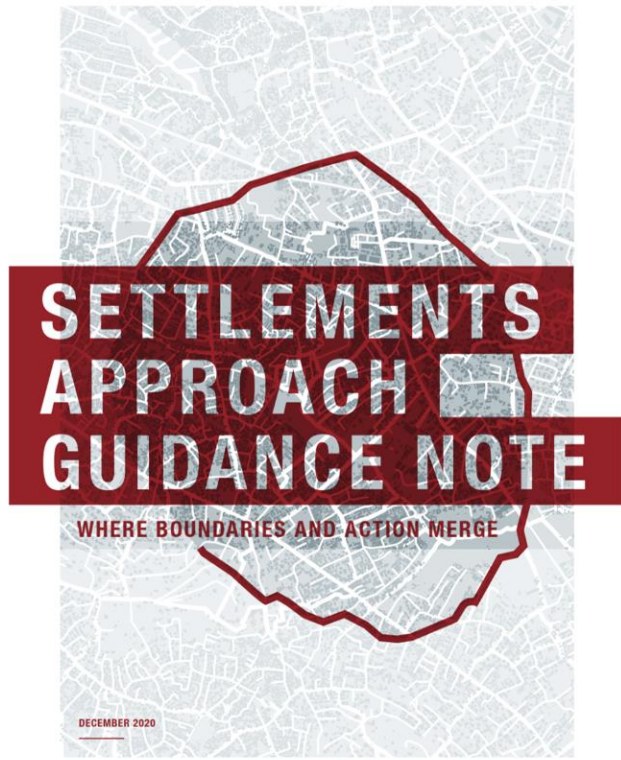


Why it matters now?

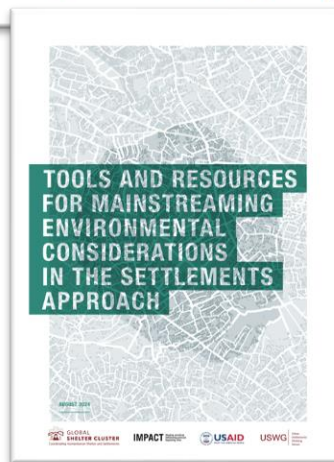
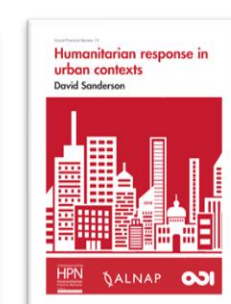
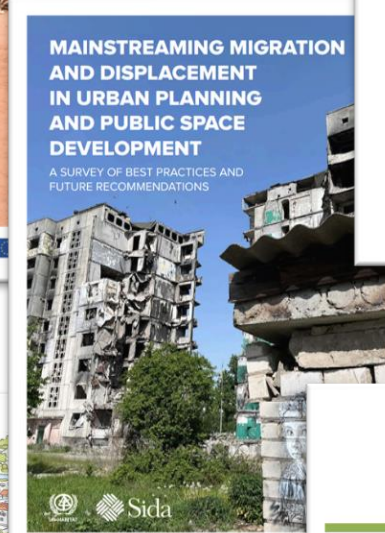
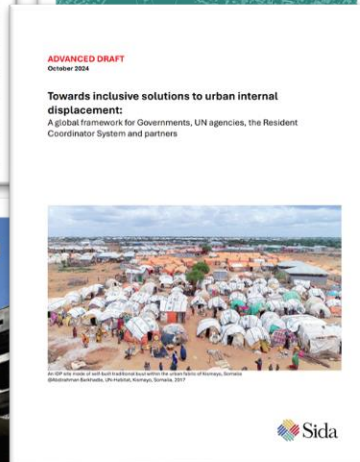
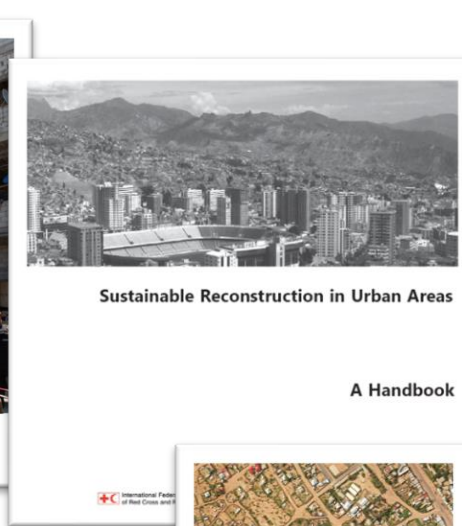
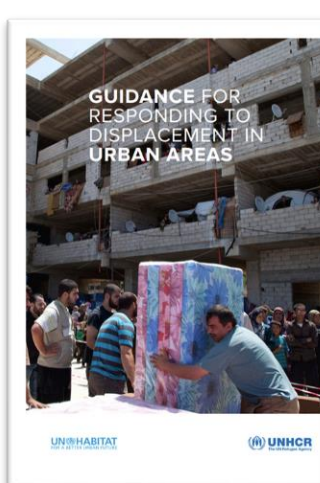
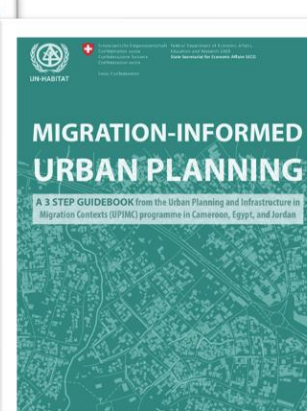
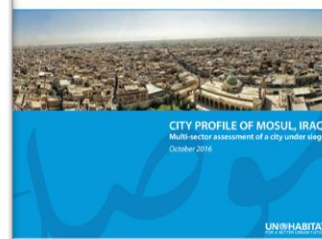


Ayham Dalal and Anna Wilk-Pham.

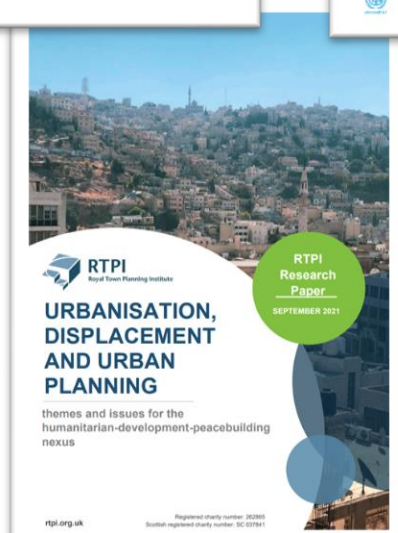
What is LOCALISE?



Global Shelter Cluster
USWG
USAID
InterAction
CRS
IMPACT



Global Shelter Cluster
IMPACT
USAID
USWG



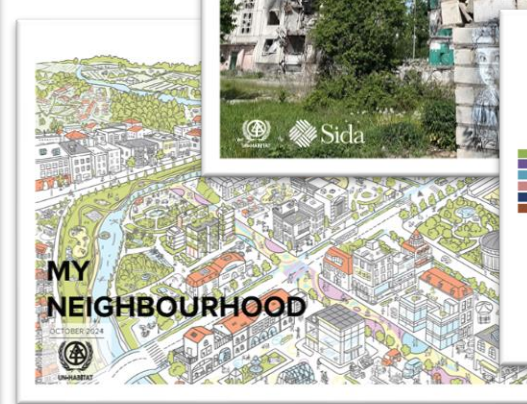
RTPI
Royal Town Planning Institute

URBANISATION,
DISPLACEMENT
AND URBAN
PLANNING

themes and issues for the
humanitarian-development-peacebuilding
nexus

rtpi.org.uk

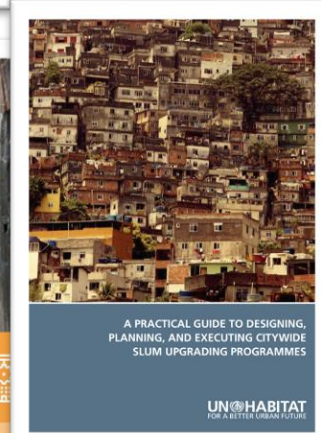
Registered charity number: 202001
Scottish registered charity number: SC 037461



UN-HABITAT
FOR A BETTER URBAN FUTURE

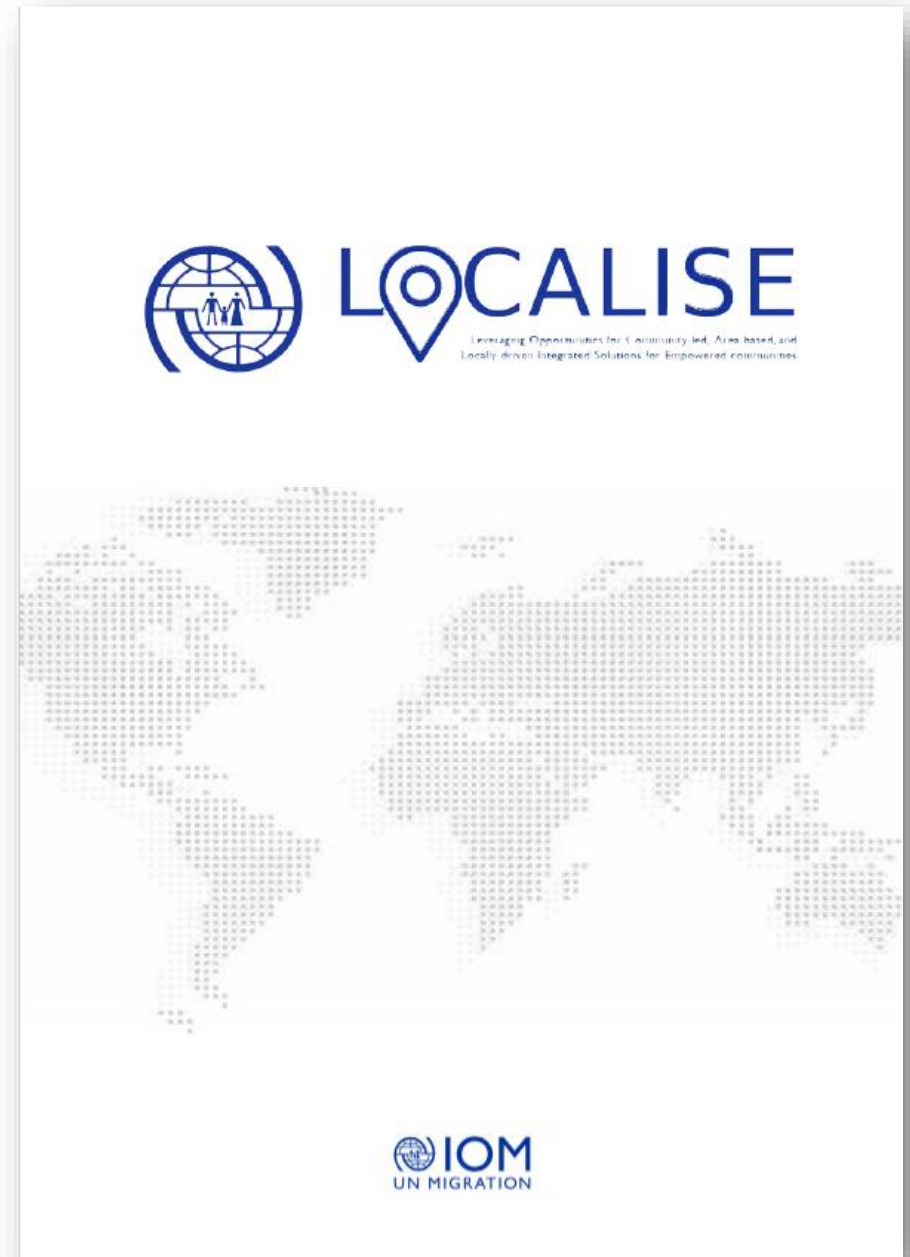


European Union
IOM
UN MIGRATION
UN-HABITAT
FOR A BETTER URBAN FUTURE



What is LOCALISE?

- Toolkit and guided process
- Planning with PEOPLE
- From crisis to recovery



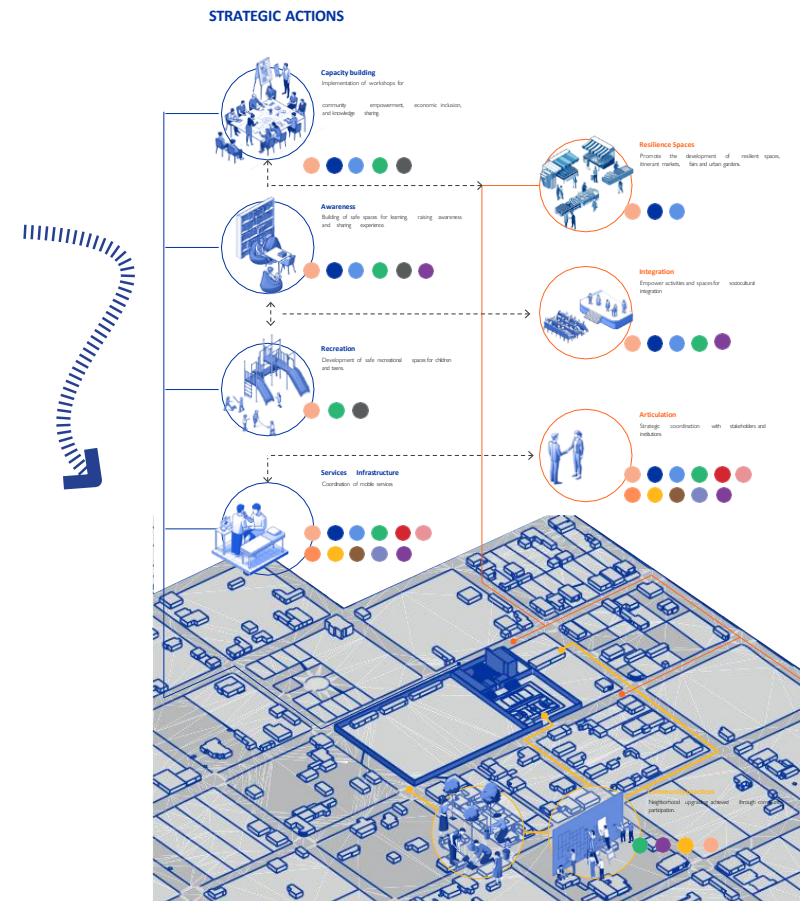
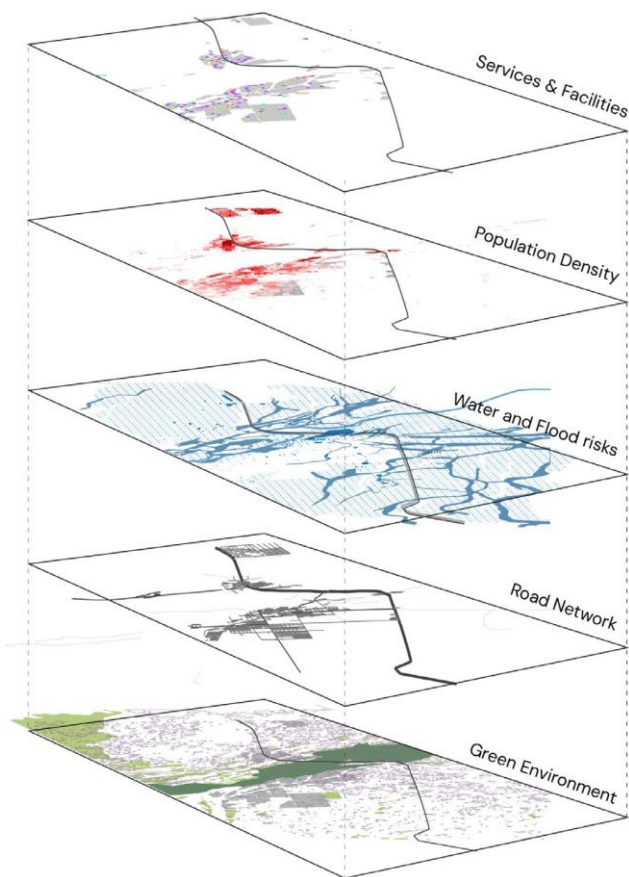
How does it work?

2 | Ground-truthing with communities

Spatial Data is validated and enriched through local perspectives and participatory engagement.

4 | Translating priorities into action

Community inputs are aligned with sectoral responses to guide coordinated, area-based programming.



1 | Multi-sectoral spatial analysis

Data layers such as services, population density, risk, and environment, inform an integrated understanding of the area.

3 | Participatory planning and local

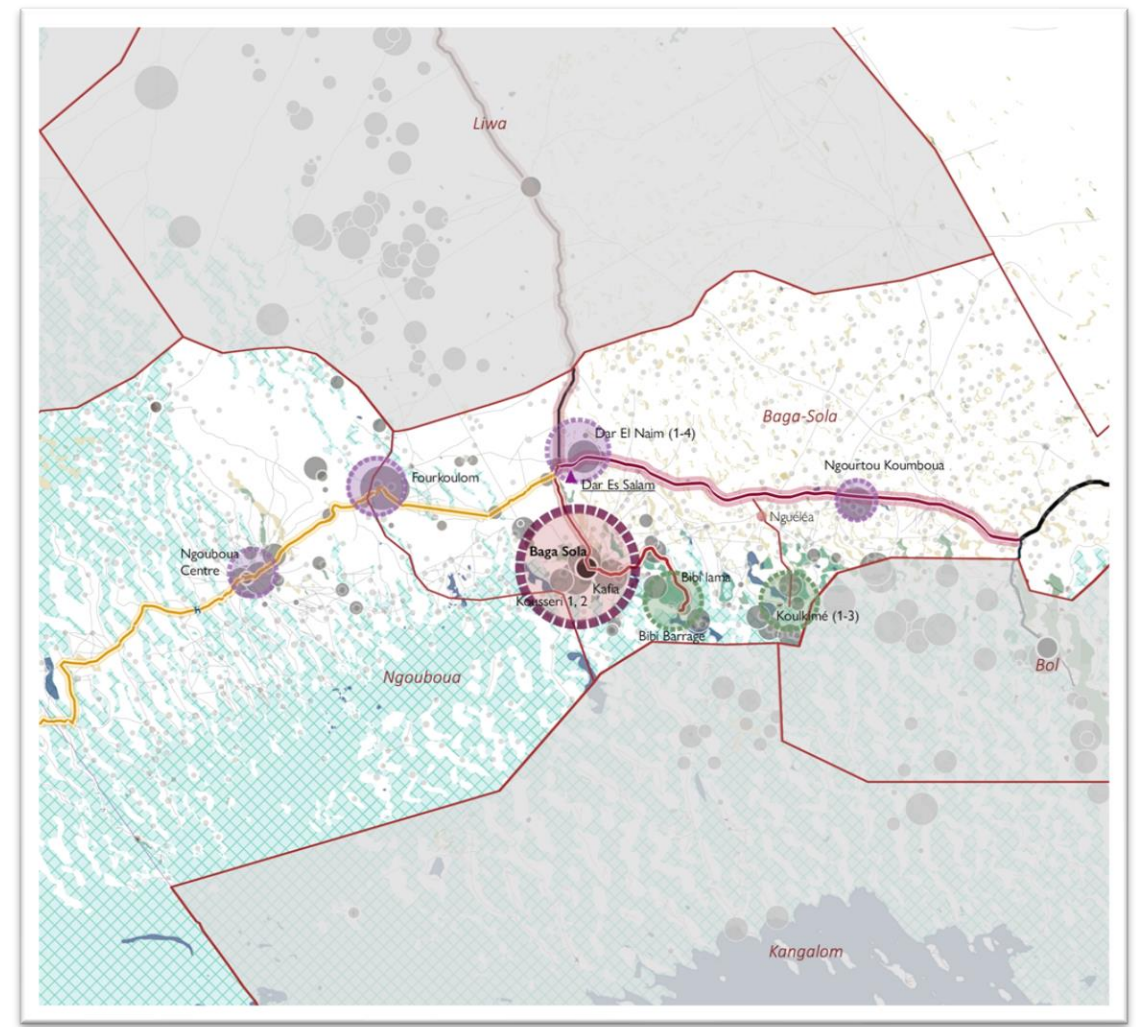
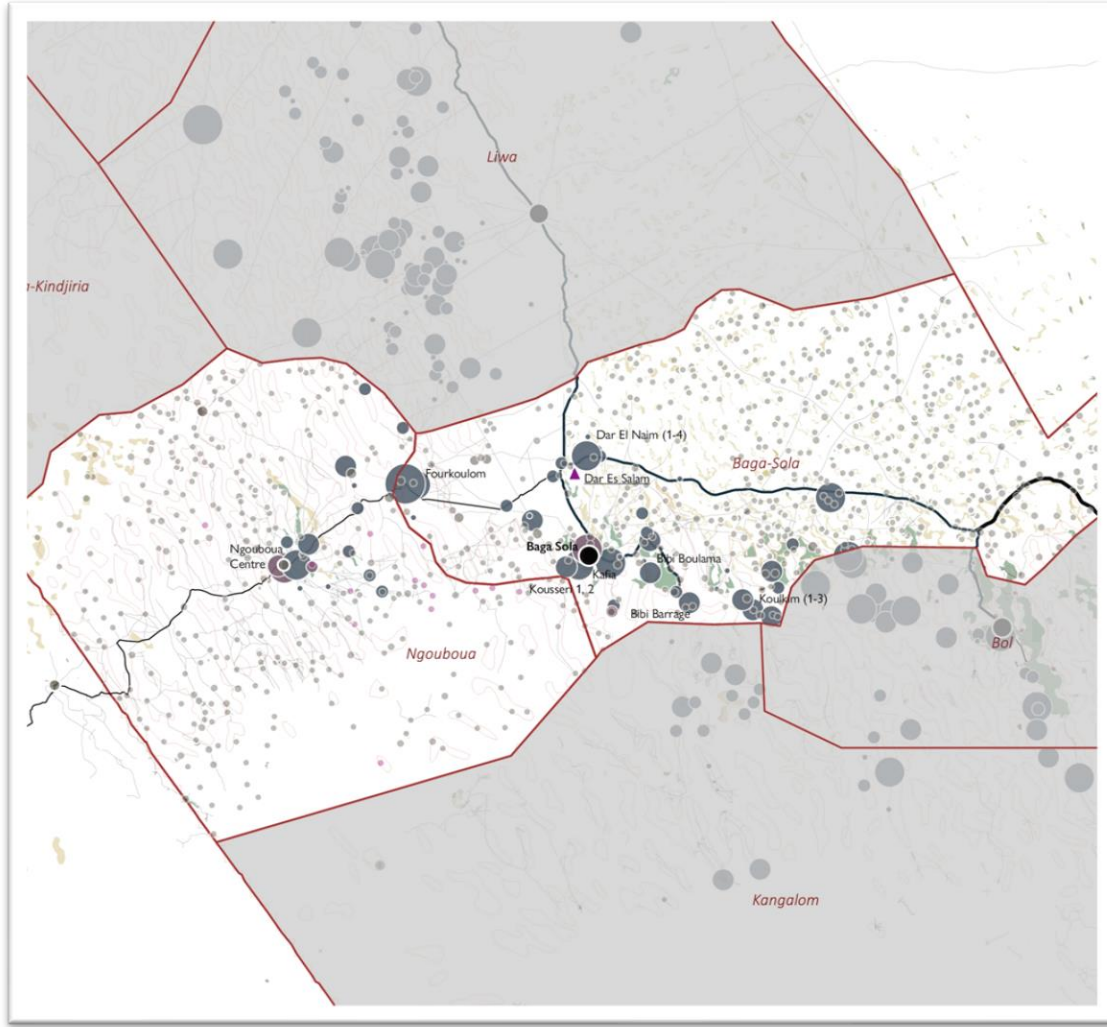
visioning Communities articulate assets, challenges, and future priorities in structured planning sessions.

5 | Localised and actionable plans

Integrated interventions target infrastructure, services, cohesion, and resilience at neighbourhood scale.

LOCALISE in practice

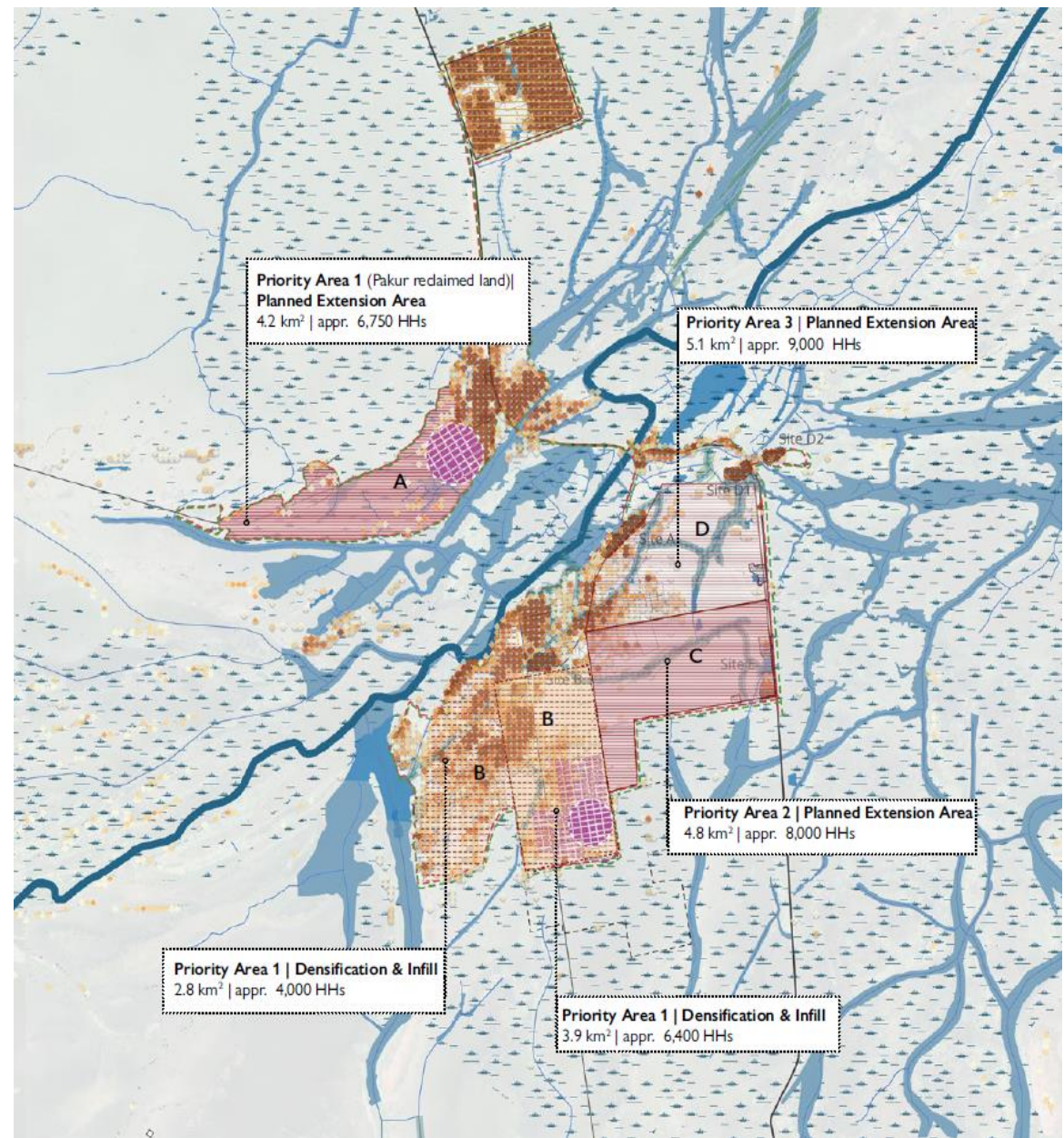
- Lac Chad – From Dispersed Sites to Strategic Clusters
- Bentiu, South Sudan – From Emergency to Durable Solutions
- Yola & Song, Nigeria – Area-Based Economic Development
- Conocoto, Ecuador – Urban Social Inclusion



Lac Chad: From dispersed sites to strategic clusters

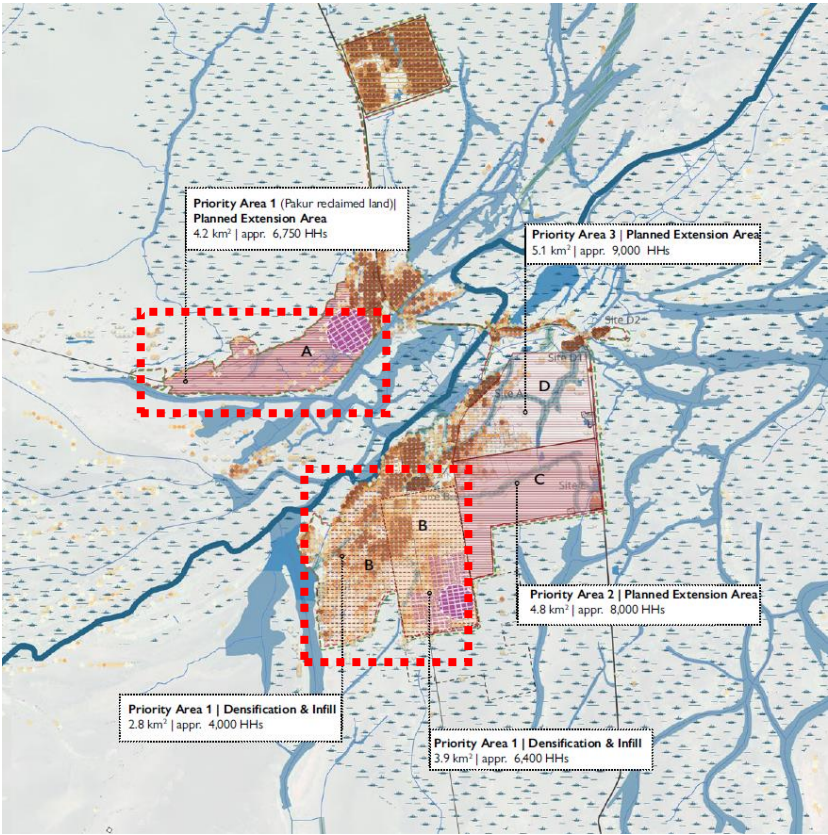


Fig. 32: Bentiu IDP Camp (ex-PaC), Unity State South Sudan. ©Christina Sumors/MSF

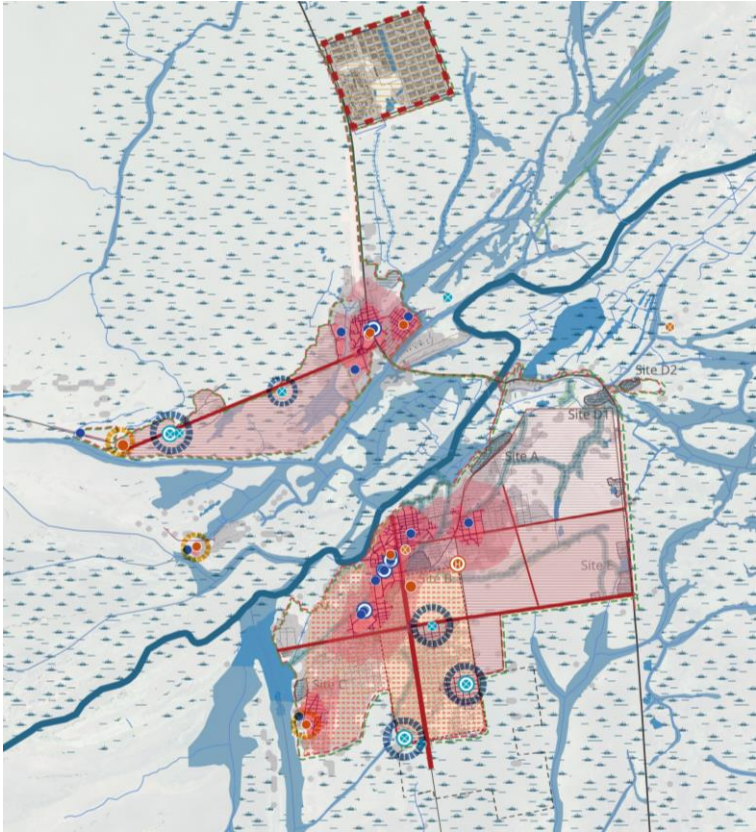


Bentiu, South Sudan – From Emergency to Durable Solutions

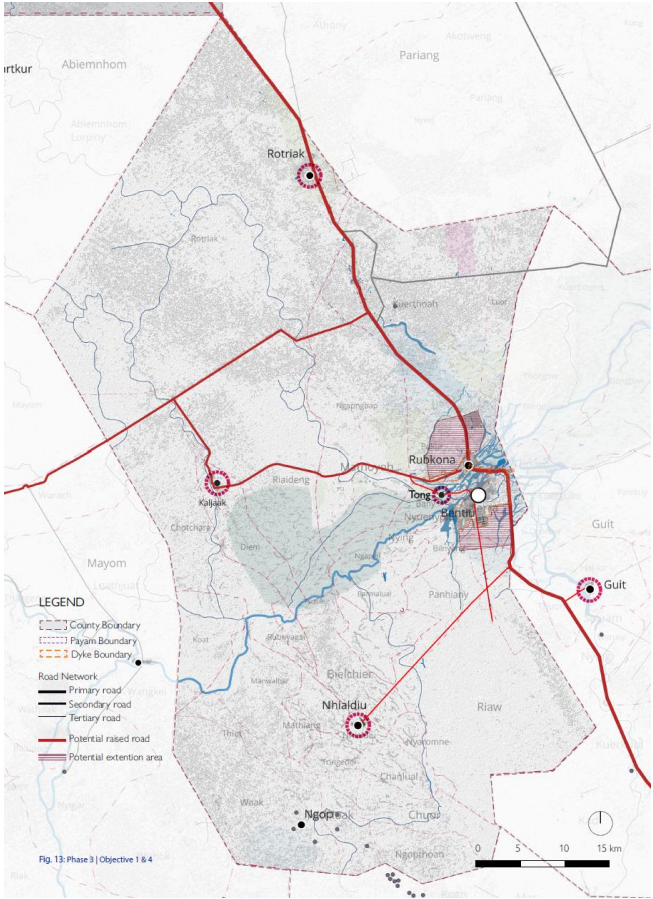
PHASE 1 | Immediate Stabilization & Foundation Building | Early Planning Phase



PHASE 2 | Intermediate Transition to Development | Resilience phase



PHASE 3 | Sustainable Urban Development | Long-Term Dev Phase





Yola & Song, Nigeria – Area-based Economic Development



PUBLIC INFRASTRUCTURE

Several streets and spaces are in poor condition or have a lot of accumulation of waste.



CHILDREN

There are not enough safe spaces for children or for them to engage in after-school activities



SENIOR CITIZEN

Reduced accessibility and a lack of inclusive spaces are major concerns.



HEALTH

Healthcare access is limited, as care centers are overwhelmed and unable to meet the needs of the majority of the population.

SECURITY

There is an increase in the rate of insecurity and violence in public spaces such as parks and bus stops, as well as in nearby streets. (SGSCGR, 2023)

GBV

There is a high rate of gender-based violence both within the family and in public spaces. (SGSCGR, 2023)

SOCIAL

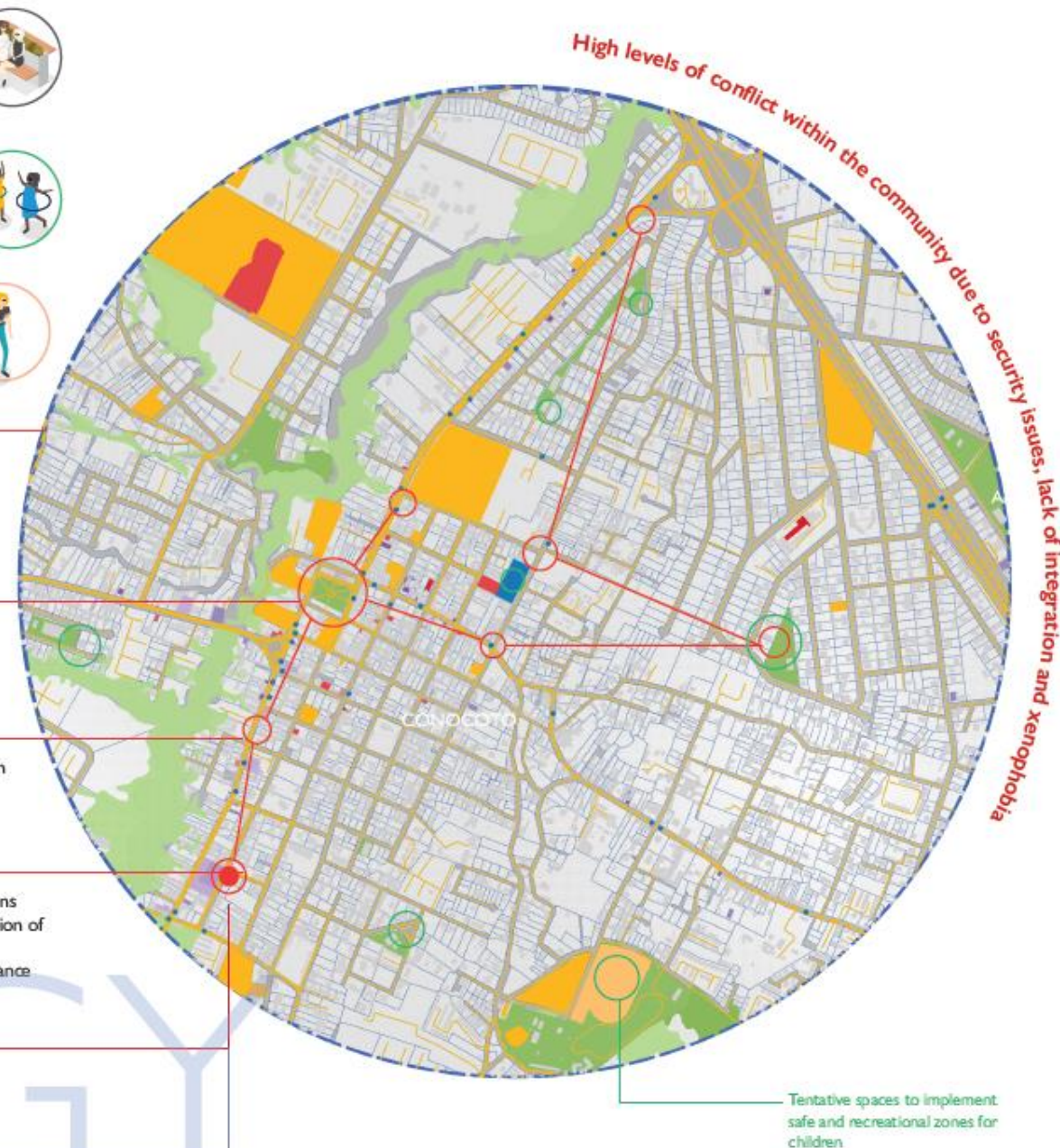
Community consultations have highlighted major concerns regarding the economic vulnerability of a significant portion of the population. There are also notable worries about individuals living on the streets and struggling with substance abuse.

MIGRATION

A perceived high level of xenophobia among residents.

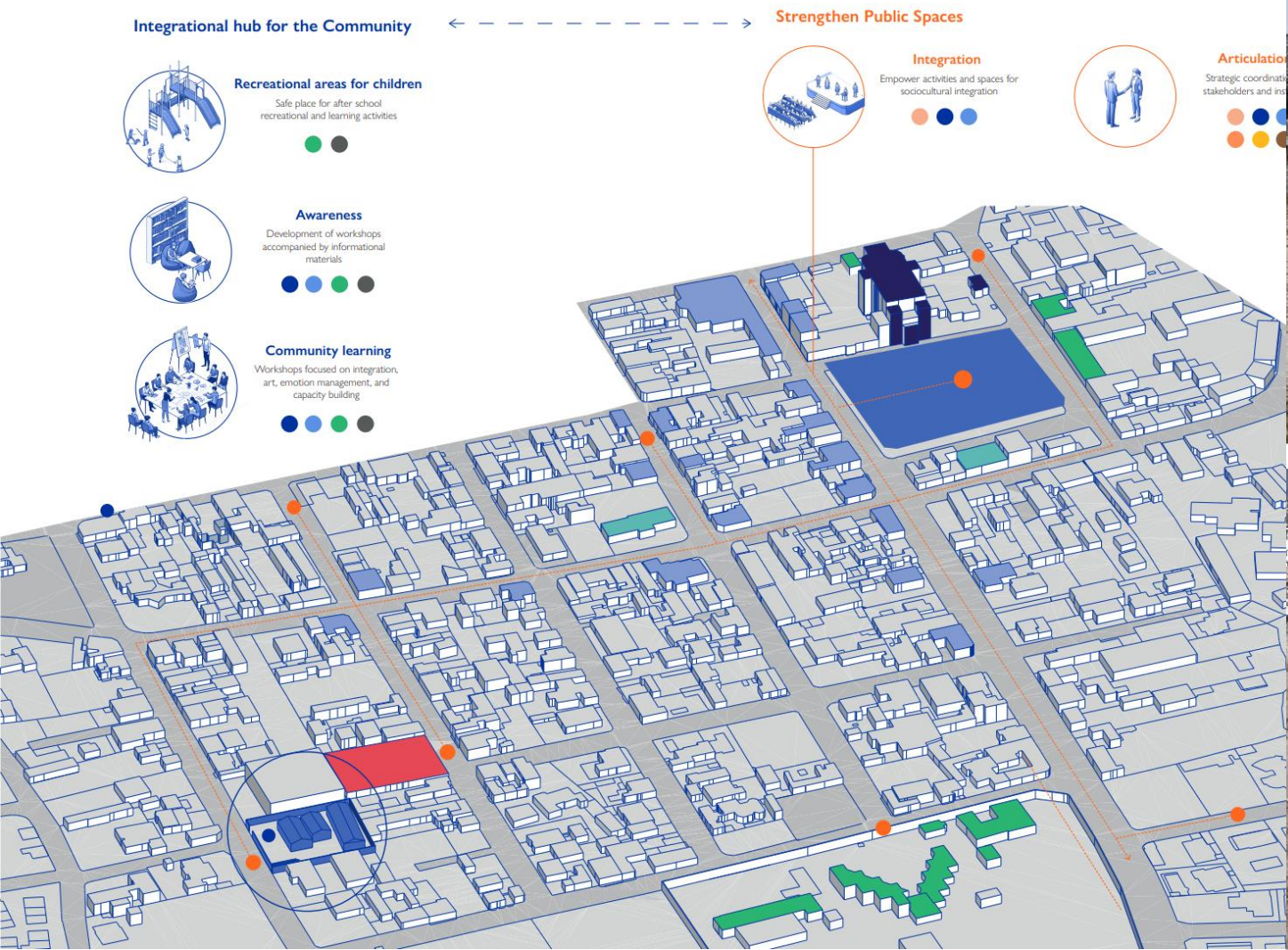
COMERCE

Presence of informal and unregulated trade.



- Conocoto, Ecuador – Urban Social Inclusion

STRATEGIC ACTIONS



Before



After

© OIM 2024 / Irene Velarde

Thank you!

Q&A

Contacts IOM Shelter Support: ShelterSupport@iom.int

