

# UKRAINE

## NORTH KHARKIV, KHARKIVSKA OBLAST

IMAGERY ANALYSIS: 21, 22 & 23 March 2022 PUBLISHED: 29 March 2022 V1



% TOTAL VISIBLY  
DAMAGED CELL

4%

AREA OF  
INTEREST

470km<sup>2</sup>

TOTAL AREA OF  
KHARKIV

831km<sup>2</sup>

INSET 1:  
23 March 2022

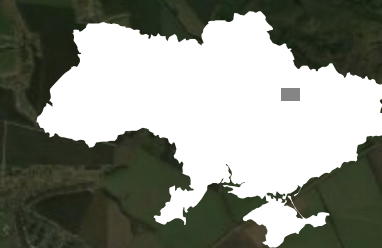
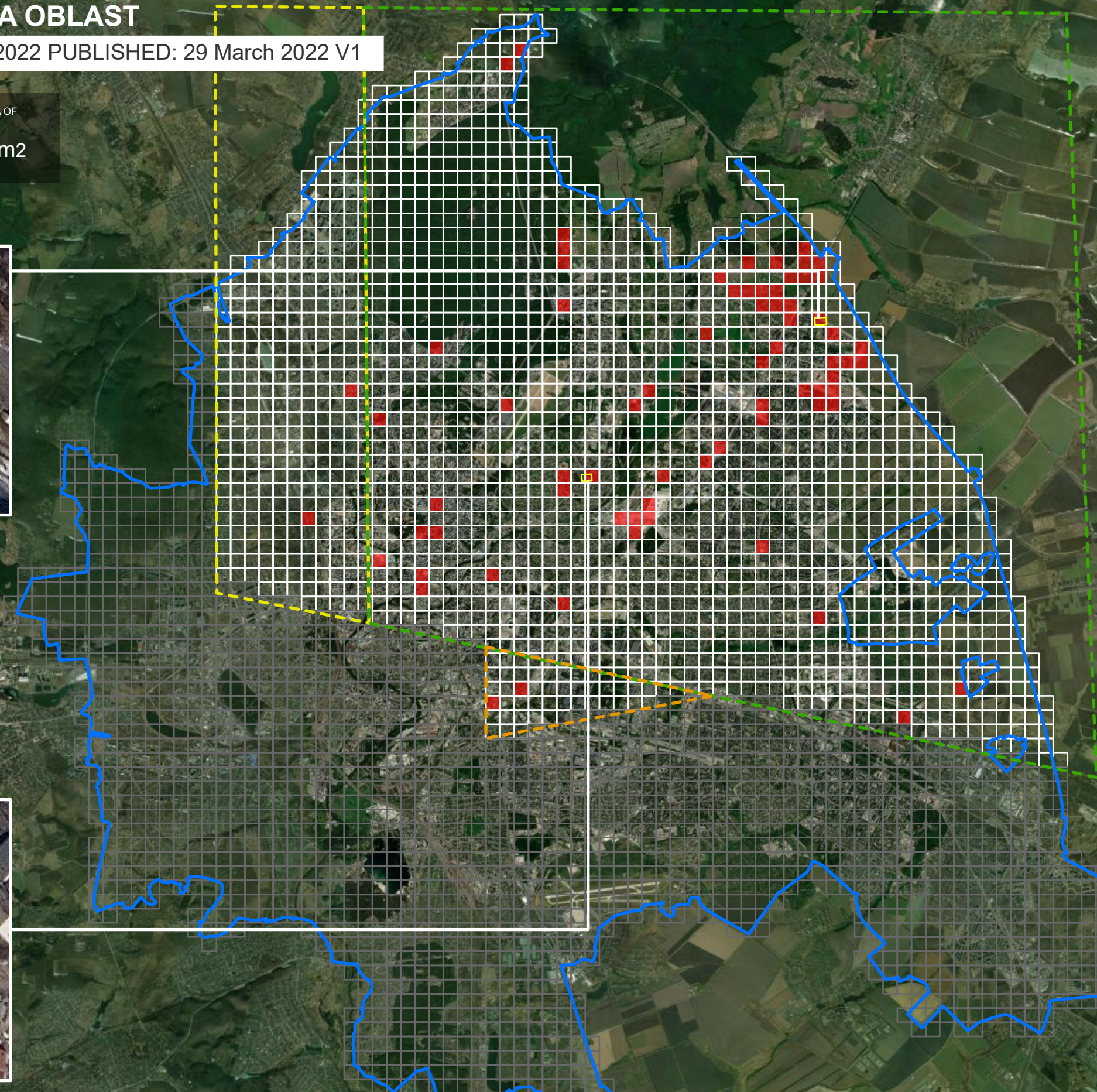


Damaged residential building

INSET 2:  
23 March 2022



Damaged Education Facility




### UNOSAT Damage Assessment Overview Map

This map illustrates a satellite imagery-based Rapid Damage Building Assessment (RDBA) in the North of Kharkiv, Ukraine. The RDBA divides the area of interest into 500m x 500m cells, each of which is analyzed to determine whether or not there are damaged buildings inside the cell.


Based on imagery collected on 21, 22 and 23 March 2022, analysts found that 72 cells out of 1,866 cells in the North of Kharkiv sustained visible damage. This represents approximately 4% of the cells over the city.


This analysis is based on structures visibly damaged as of 21, 22 and 23 March 2022 as seen in marginally degraded satellite imagery affected by precipitation, seasonality, and other limiting factors. This is a preliminary analysis and has not yet been validated in the field. Please send ground feedback to United Nations Satellite Centre (UNOSAT).


### Legend

 Kharkiv Boundaries

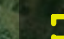
### Damage

 No Visible Damage

 Damage

 Not Analysed

### Satellite image date

 21/03/2022

 22/03/2022

 23/03/2022

