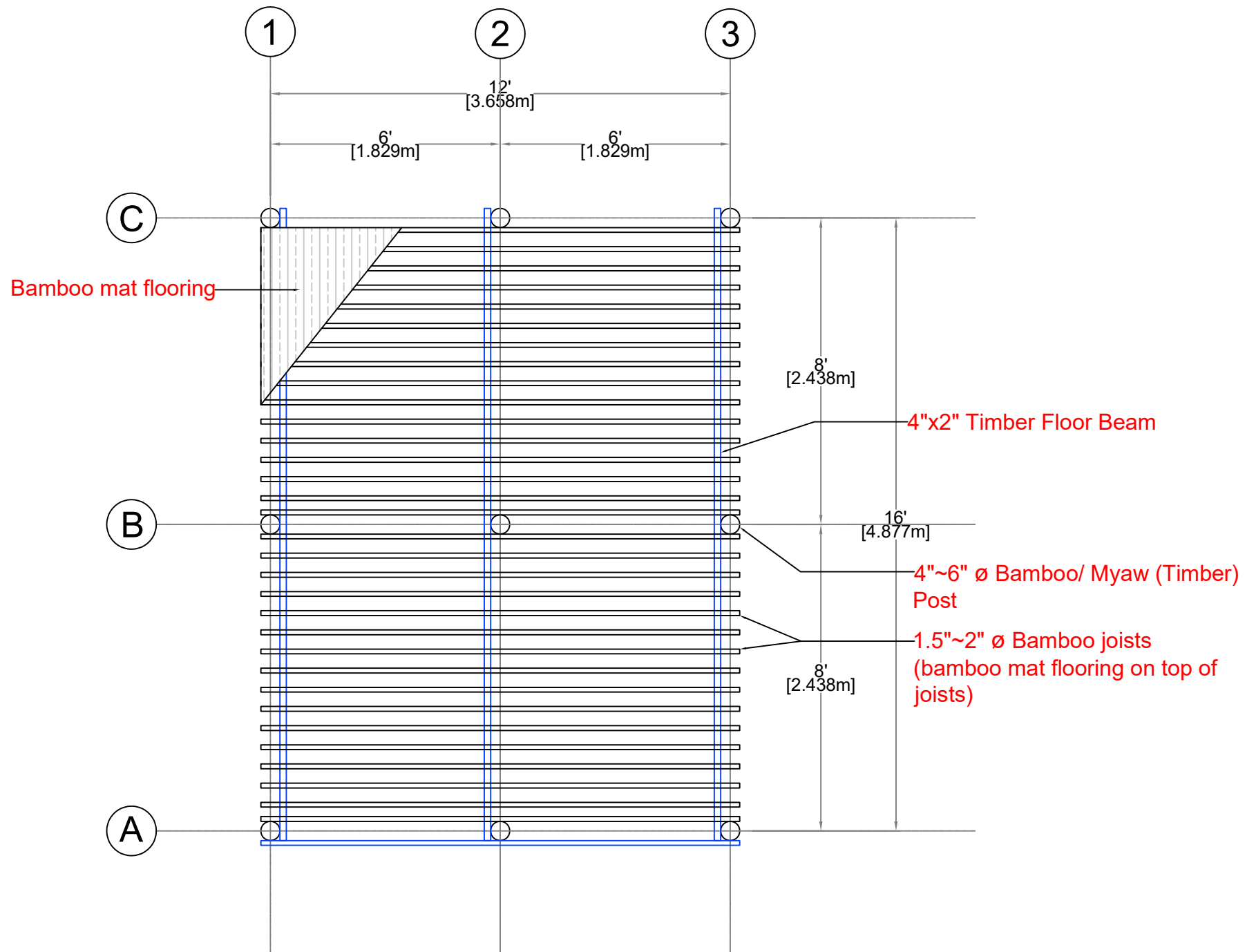
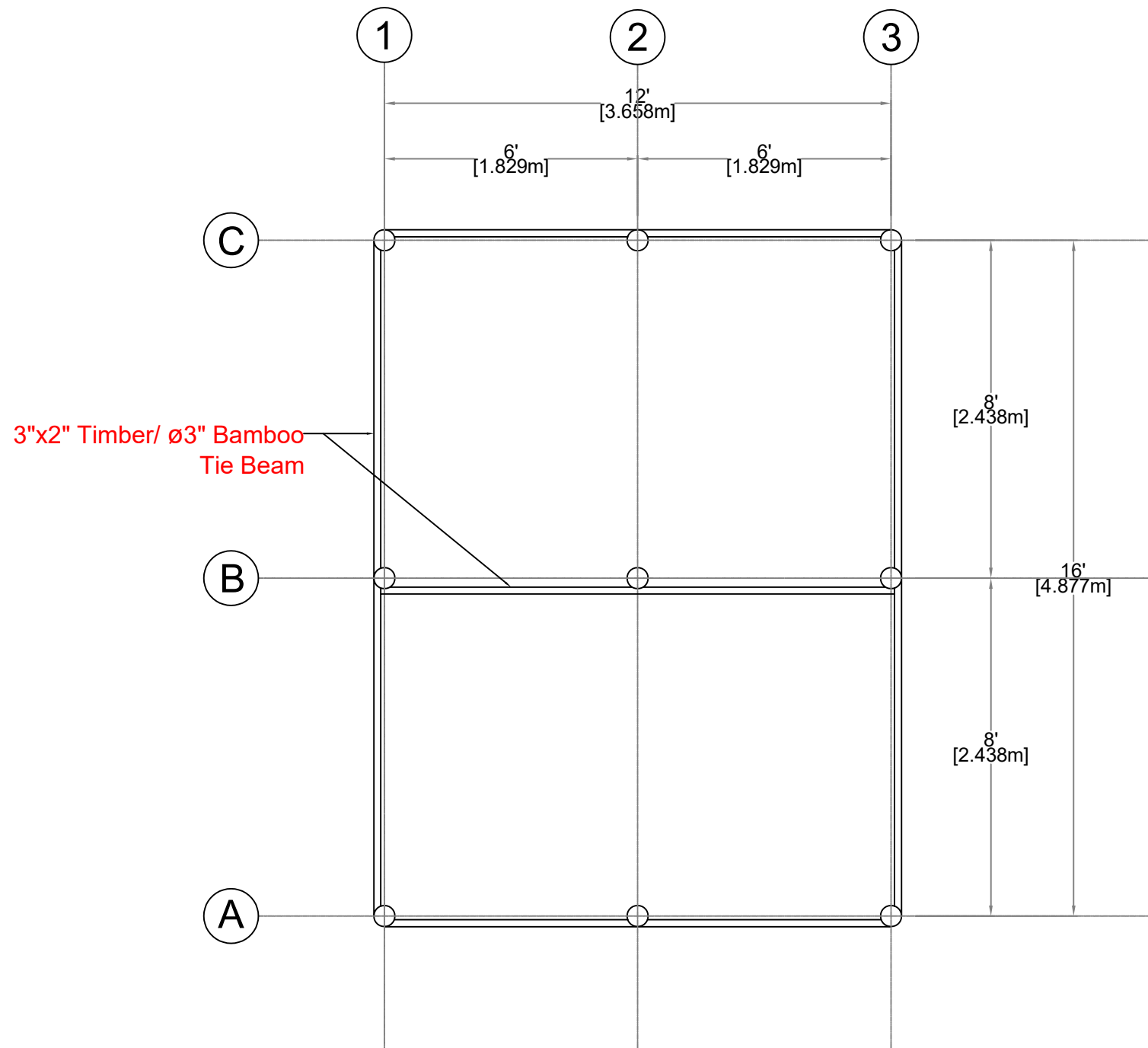


Floor Plan view

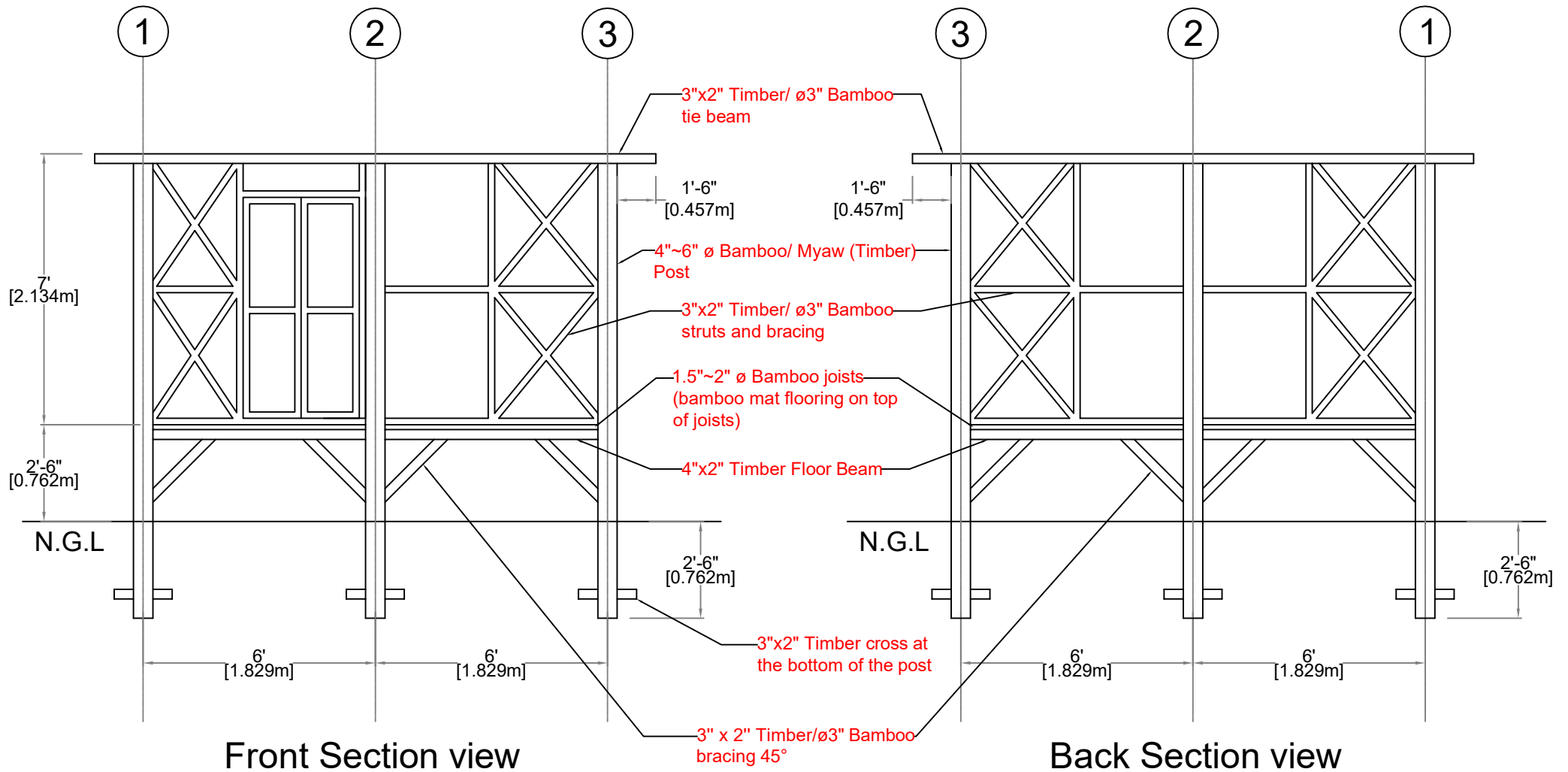


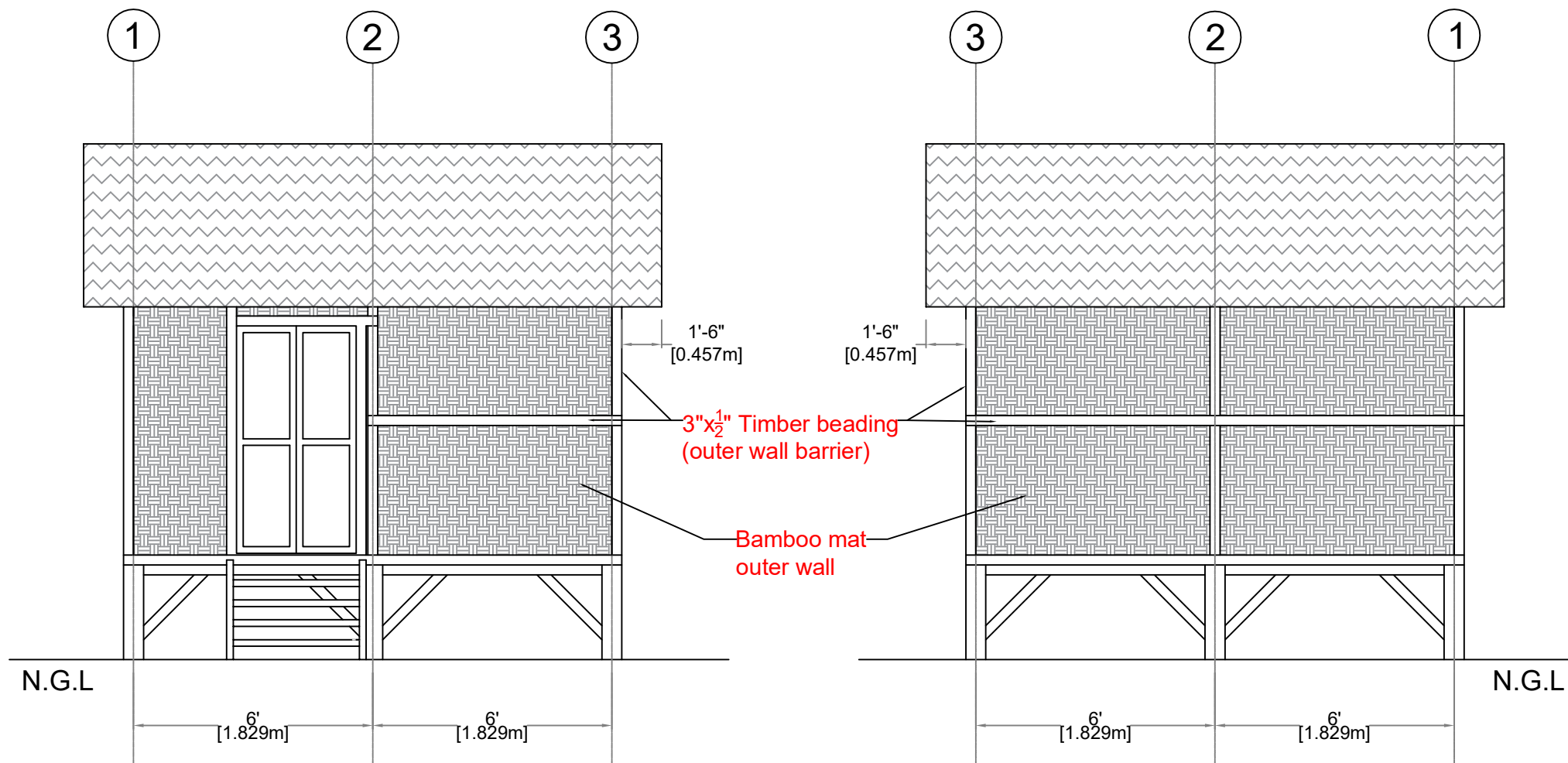
Floor Beam Plan (+2'-6" Level)



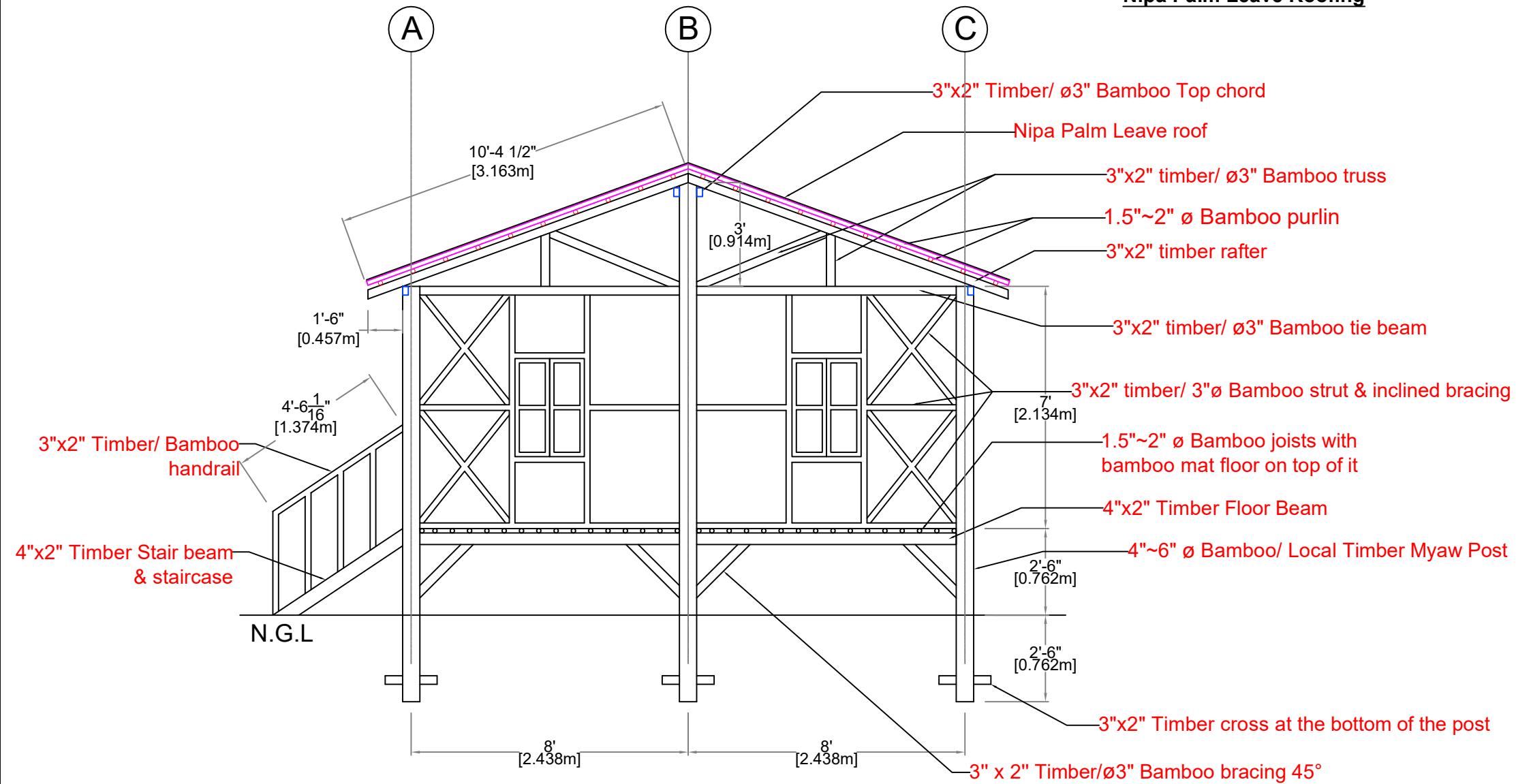
Roof Tie Beam Plan (+9'-6" Level)

Door and window frames must be 3"x2" timber while other struts and bracing can be 3" ø bamboo.





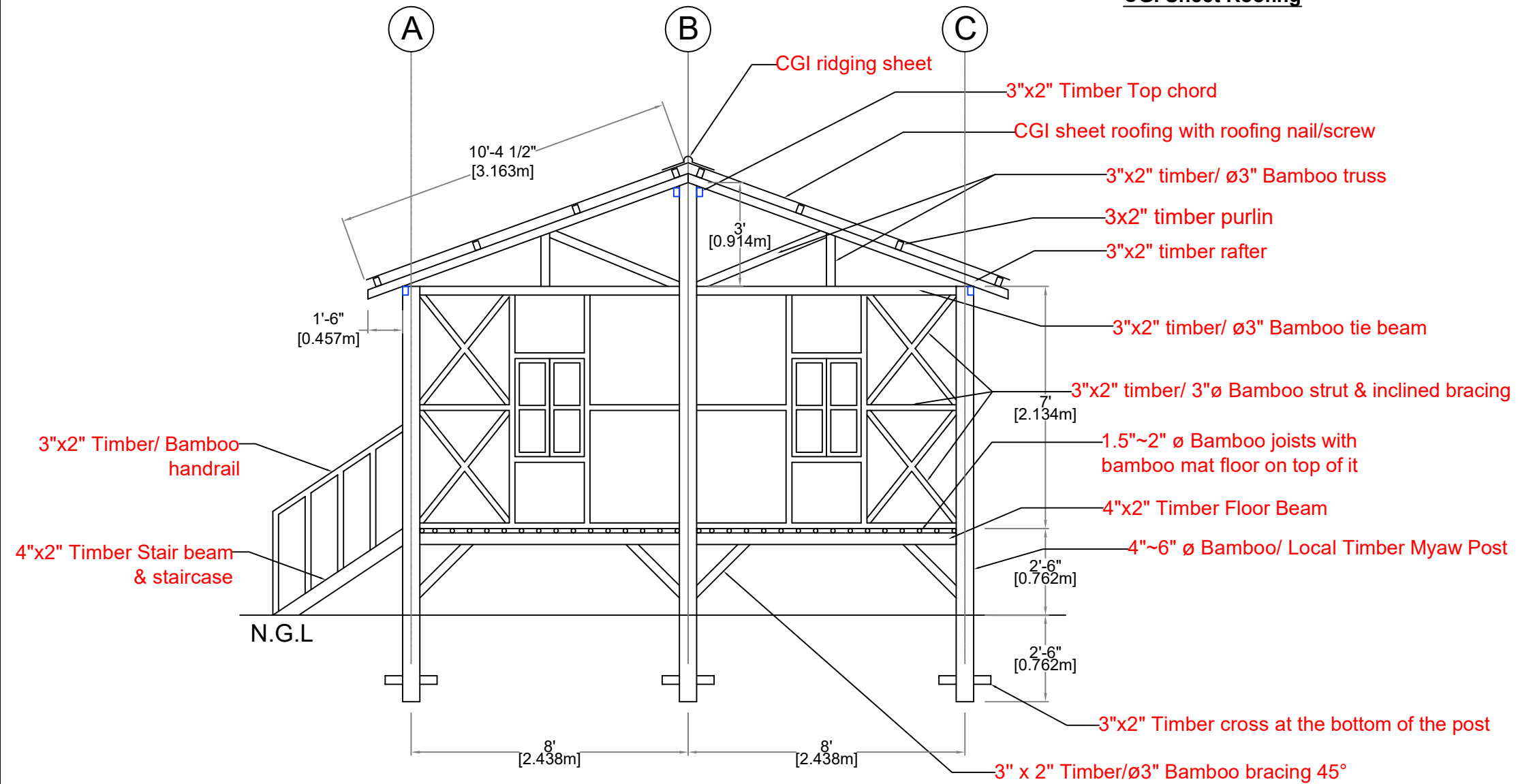
Nipa Palm Leave Roofing



Door and window frames must be 3"x2" timber while other struts and bracing can be 3" ø bamboo.

Section view

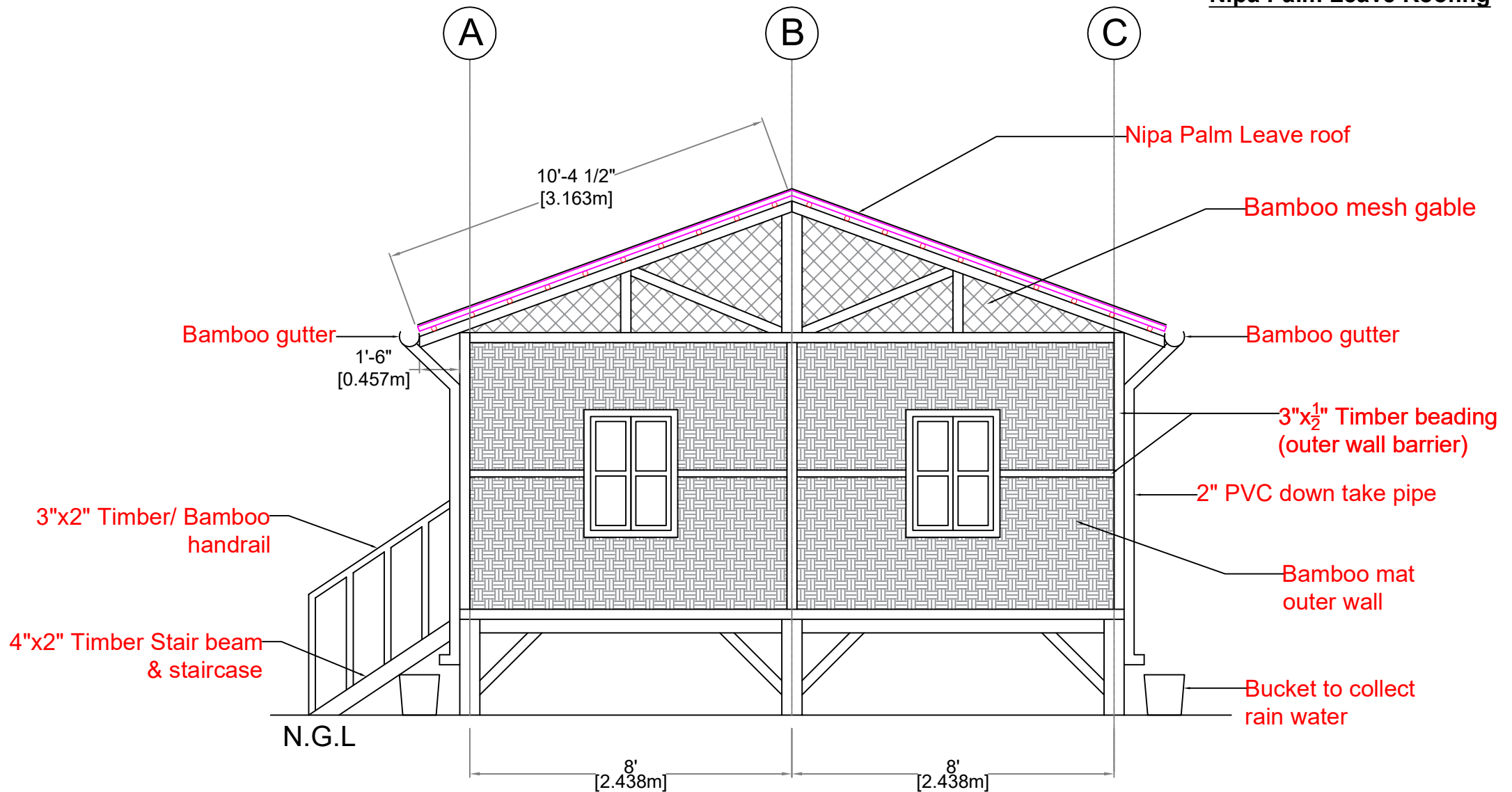
CGI Sheet Roofing



Door and window frames must be 3"x2" timber while other struts and bracing can be 3" ø bamboo.

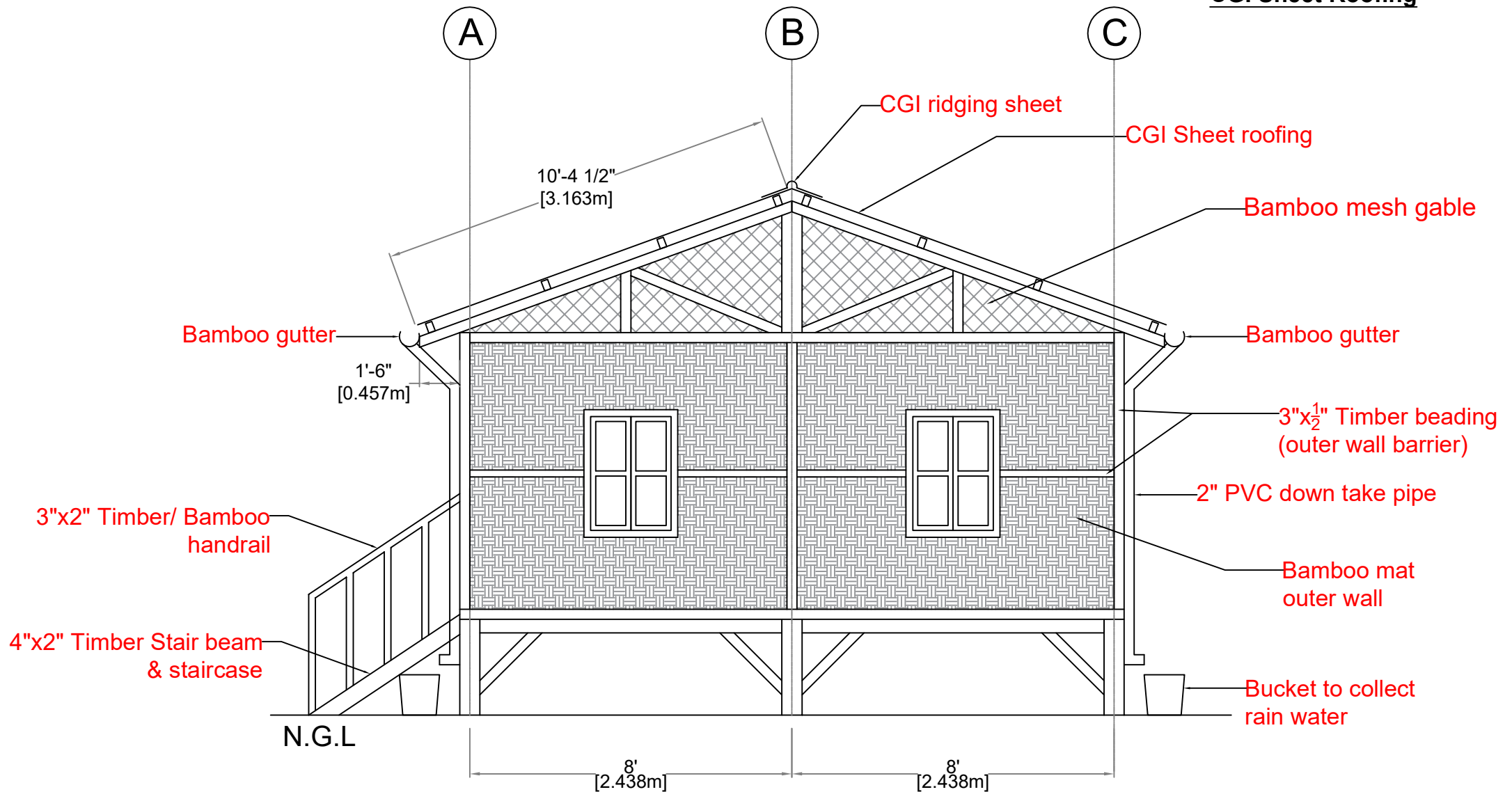
Section view

Nipa Palm Leave Roofing



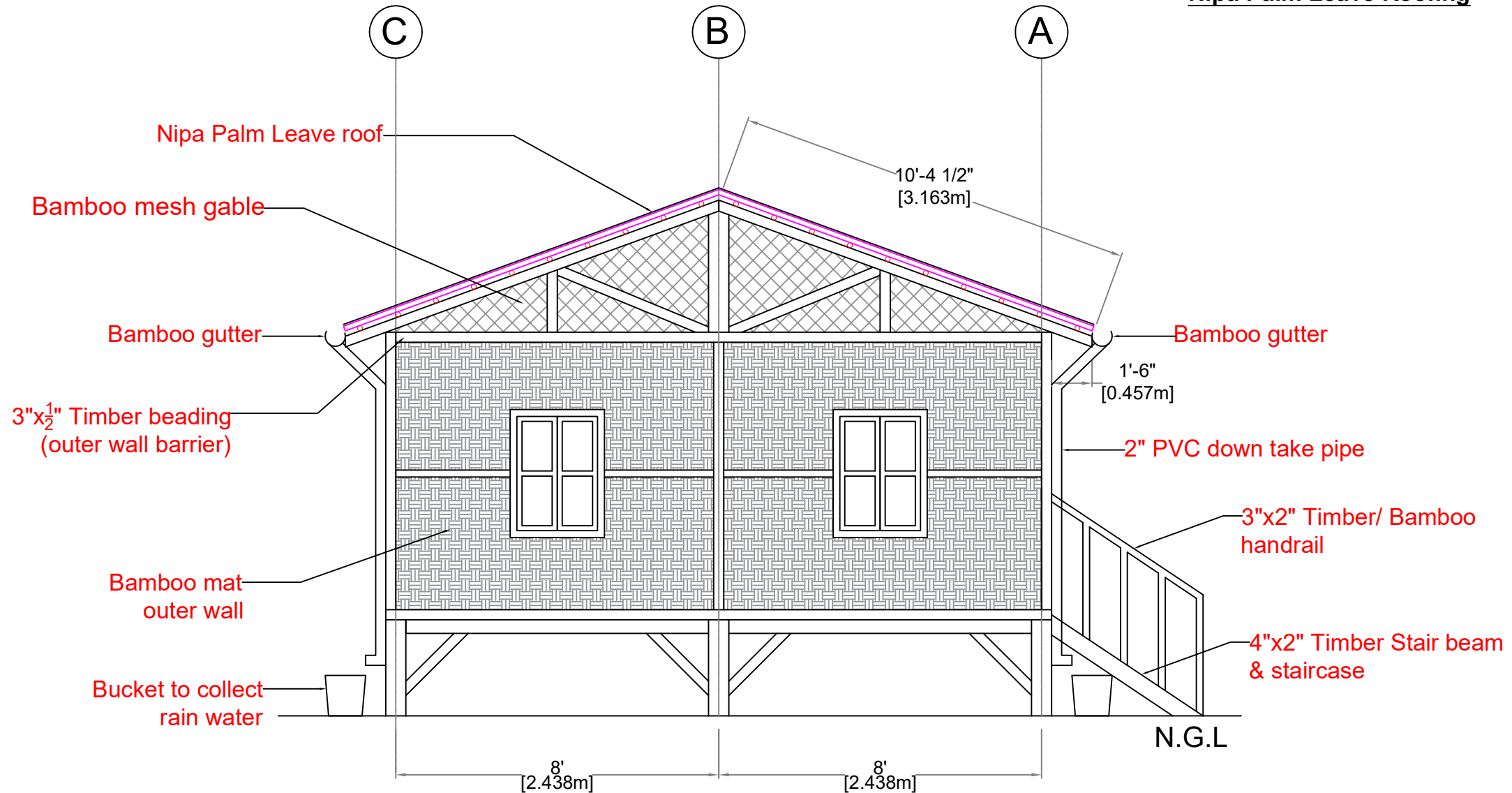
Right side view

CGI Sheet Roofing



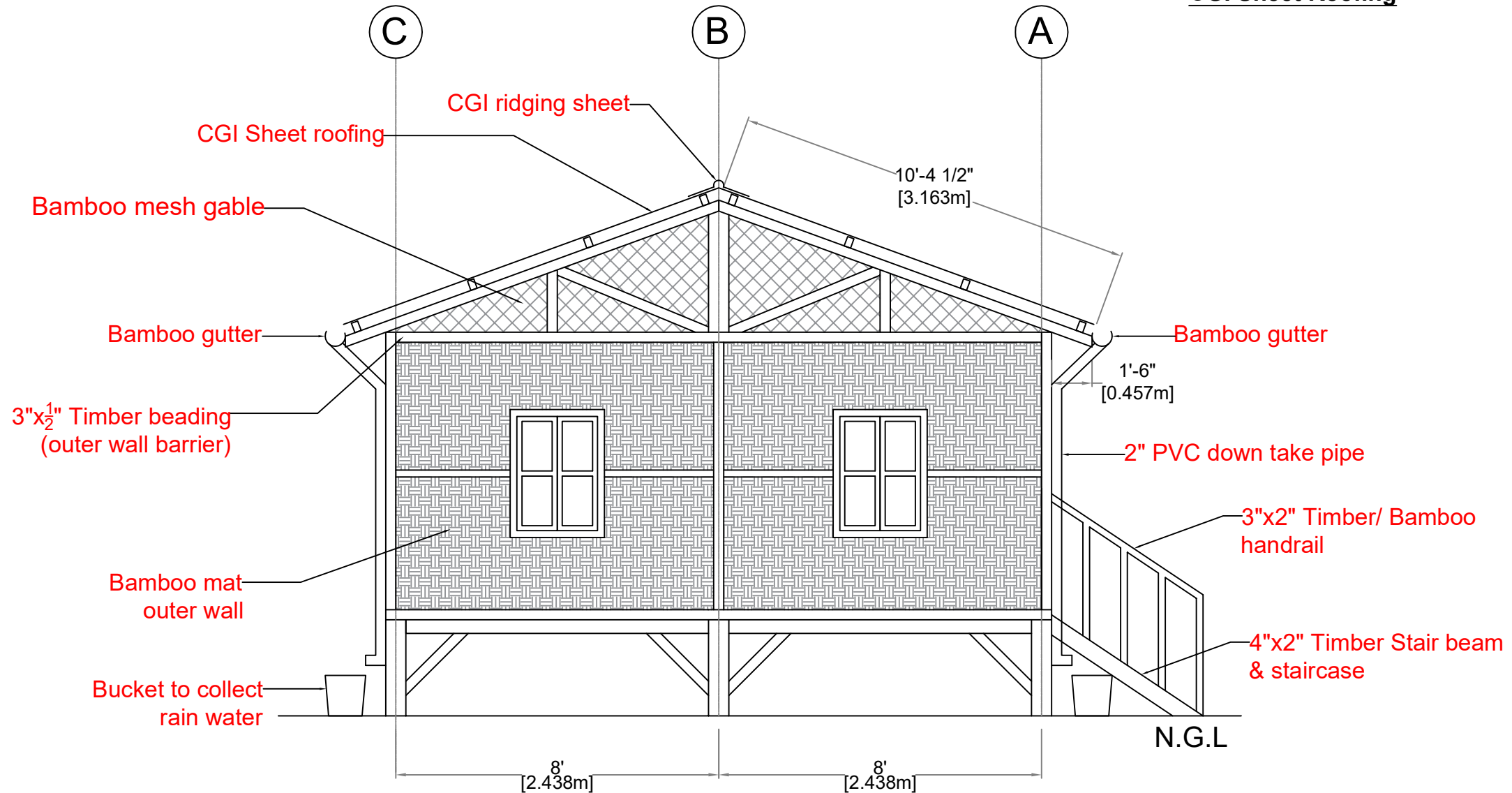
Right side view

Nipa Palm Leave Roofing



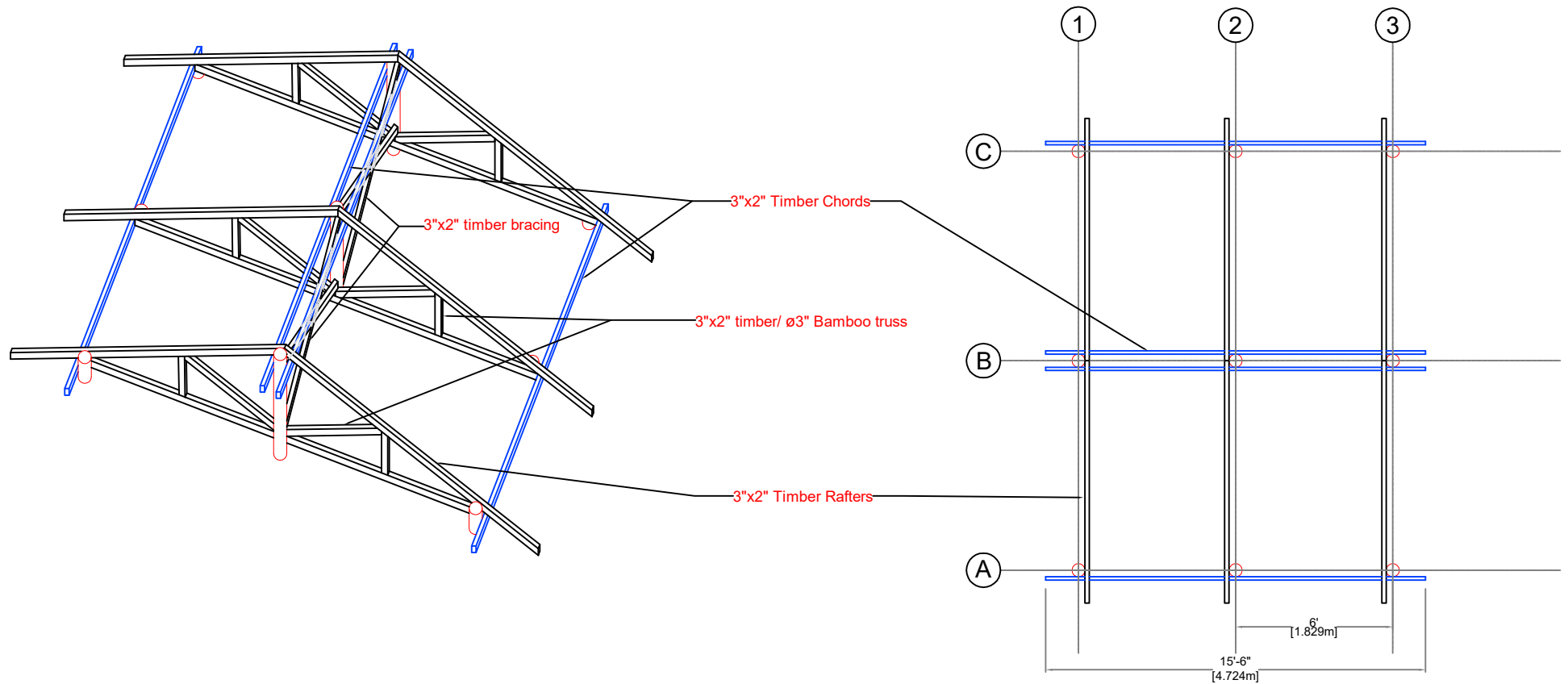
Left side view

CGI Sheet Roofing



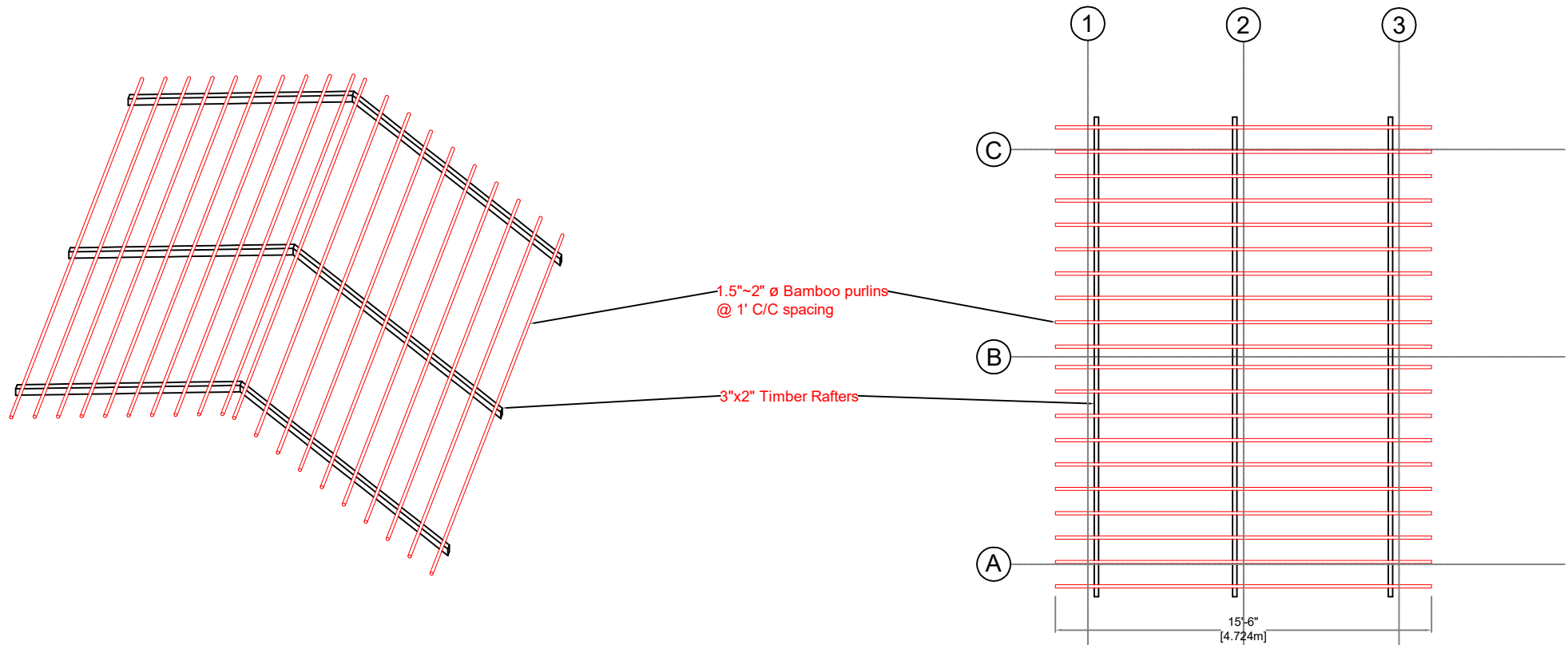
Left side view

Use cyclone straps for every connection between posts, beams, chords, rafters.
Ensure proper connection with straps from foundation to roof elements.



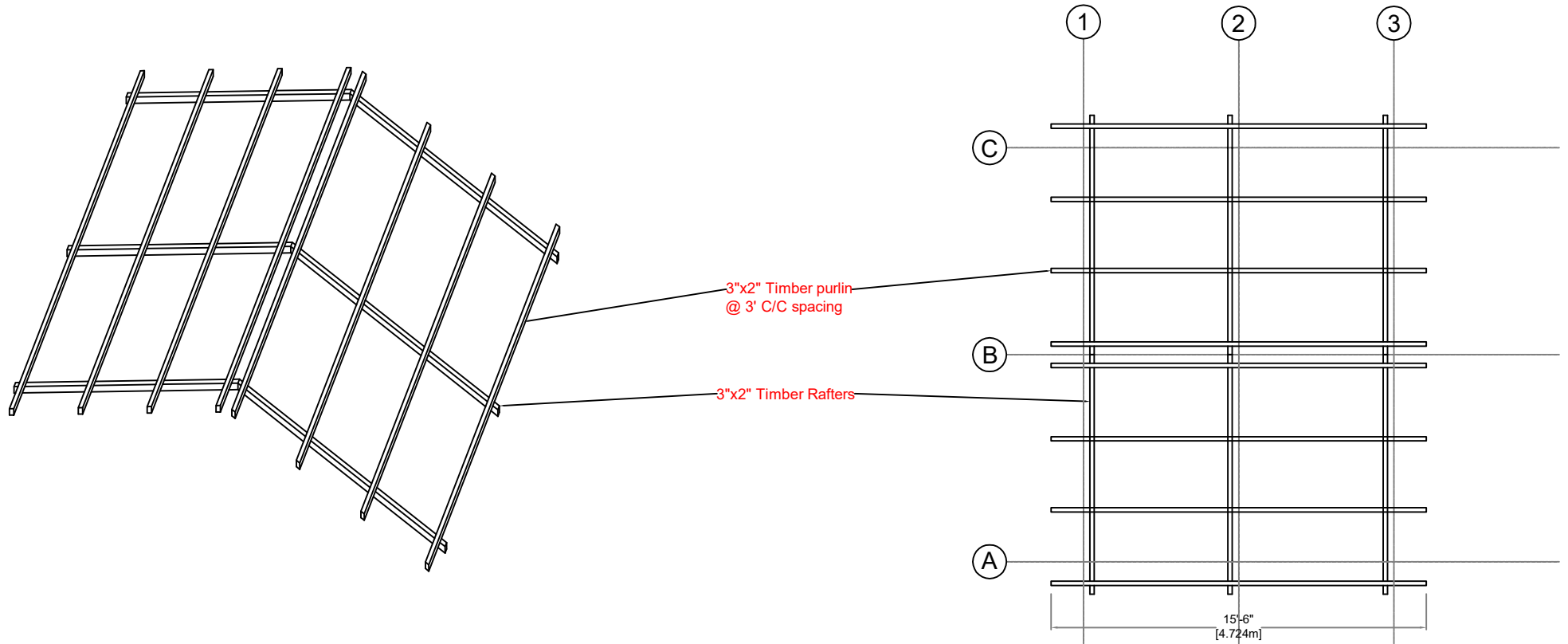
Rafter & Truss plan
(Nipa Palm Leaf and CGI Roofing)

Use cyclone straps for every connection between posts, beams, chords, rafters.
Ensure proper connection with straps from foundation to roof elements.

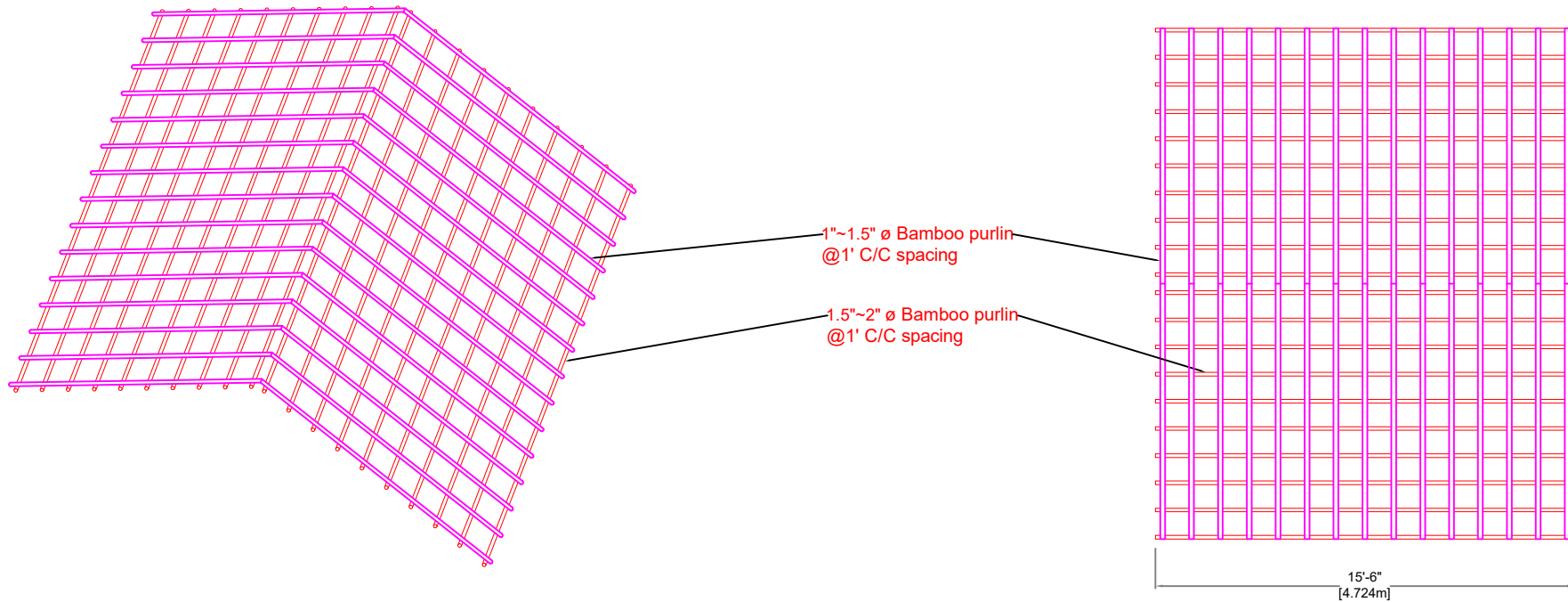


Rafter & Purlin plan
(Nipa Plam leave Roof)

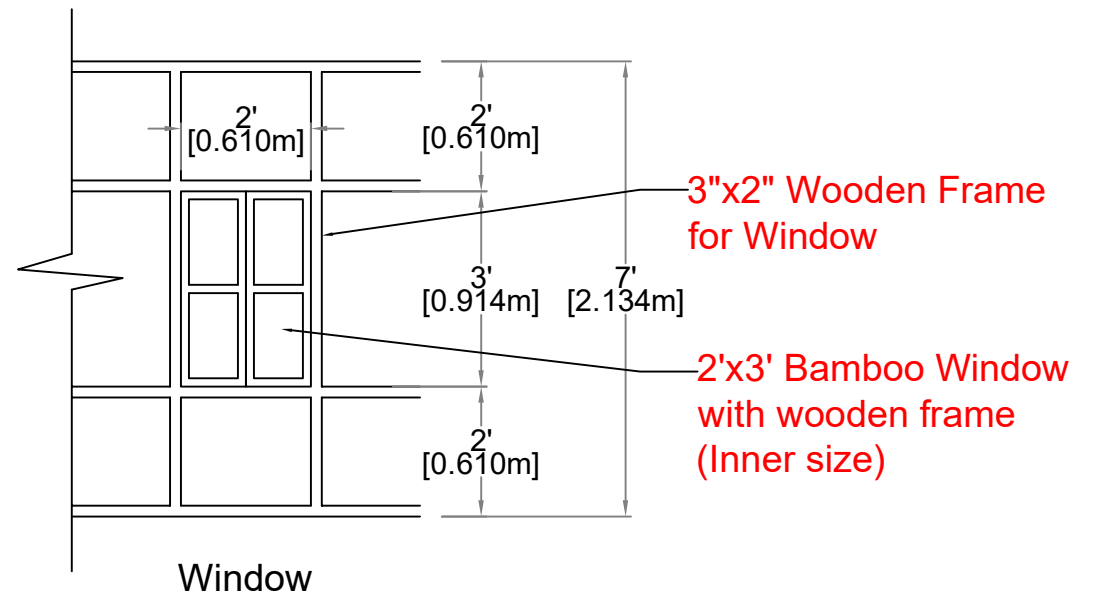
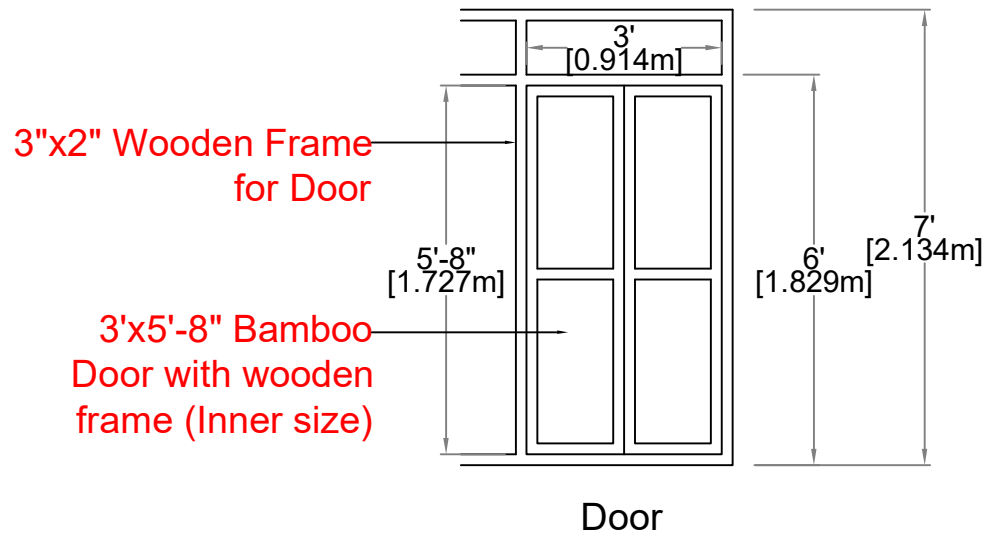
Use cyclone straps for every connection between posts, beams, chords, rafters.
Ensure proper connection with straps from foundation to roof elements.



Rafter & Purlin plan
(CGI Roof)



Purlins plan
(Nipa Palm Leaf roof)



Door & Window Details