



PALESTINE
SHELTER CLUSTER

Coordinating Humanitarian Shelter and Settlements

NATIONAL SHELTER CLUSTER MEETING

01 Oct 2025

INTRODUCTIONS

Jeroen Quanjer – National Coordinator

natco.palestine@sheltercluster.org

Maher Alabed– Sub-National Coordinator Gaza

coord2.palestine@sheltercluster.org

Fadi Shamisti – Sub-National Coordinator West Bank

coord1.palestine@sheltercluster.org

Iyad Abu Hammam – Gaza Coordinator

coord.gaza@sheltercluster.org

Mohammad Aklouk – IM Coordinator

im1.palestine@sheltercluster.org

Haneen Al Tali – IMO Gaza

im2.palestine@sheltercluster.org

Oscar Gobbato – IM Specialist Amman/ Jerusalem

ims.palestine@sheltercluster.org

Shada Qahoush – Interim Technical Coordinator

Jehan Salim – Incoming Technical Coordinator

techco.palestine@sheltercluster.org

Sneha Malani – Shelter Cluster Technical Advisor

Sneha.Malani@crs.org

▼ COORDINATION TEAM



Fadi Shamisti
Coordinator West Bank
NRC
+972 (0)54 666 3902
coord1.palestine@sheltercluster.org



Iyad Abu Hamam
Cluster Coordinator, Gaza
NRC
+972 (0)59 707 7233
coord.gaza@sheltercluster.org



Mohammed T. Al Aklouk
Cluster Information Management
Coordinator Palestine
NRC
+972 (0)595911995
+972 (0)562562445
im1.palestine@sheltercluster.org



Jeroen Quanjer
National Coordinator Shelter Cluster
Palestine
NRC
+962791223485
+972542776886
natco.palestine@sheltercluster.org



Maher Alabed
Shelter Cluster Sub National Coordinator-
Gaza
NRC
+972 (56) 2562663
coord2.palestine@sheltercluster.org



Sneha Malani
Shelter Cluster Technical Advisor
CRS
Sneha.Malani@crs.org



Jehan Salim
Shelter Cluster Technical Coordinator
Palestine
NRC
techco.palestine@Sheltercluster.org



Haneen Al TALI
Information Management Officer
Palestine
NRC
im2.palestine@sheltercluster.org



Oscar Gobbato
IM Specialist Shelter Cluster Palestine
NORCAP
+962 79-1223-535

Website - <https://sheltercluster.org/response/palestine>
Email Registration - [Shelter Cluster Mailing List Registry](#)

AGENDA

- National Update
- Gaza update
- West Bank update
 - Rental assessment report
- Information Management Update
- Technical Coordination
- Open discussion
- AOB

CONTEXTUAL / NATIONAL UPDATE

- OPT will be producing a Flash Appeal for 2026 which will be a resource mobilization document covering both Gaza and the West Bank that outlines top level activities and associated cost estimates.
- Cargo movements at Al Karama/Allenby Bridge border crossing have been suspended since 18 September due to incident which limited the crossing commercial imports and exports, and the entry of humanitarian supplies from Jordan. Also West Bank relays heavily on this crossing.
- Delivery of shelter and NFI assistance has began in August at slow rate, but the current level of support is far from where it needs to be to match the scale of humanitarian needs.

Gaza

- As of September 2025, a total of 11,040 tents have entered the Gaza Strip. (Including SC partners and none partners)
- According to SMC reporting tool, 60% consider shelter as priority #1 while 29% consider NFI , while priority #2 is hygiene and #3 is food

West Bank

- Operations continue across cities, towns and villages in the northern West Bank which is resulting in further displacement.
- Settler violence on the rise, with spikes linked to the olive harvest season

GAZA UPDATE

Overview of the situation in Gaza

Military operations have continued to intensify in Gaza, Israeli forces are advancing towards areas of central Gaza City, the south of Al Rimal, and Tel Al Hawa, destroying large numbers of residential buildings using explosive robots, forcing IDPs to continue to move towards Deir al Balah and Khan Younis, already overcrowded and facing a shortage of supplies, shelter materials and infrastructure.

Displacement (SMC)

As of 27 September, an estimated 2.1 million people live in Gaza, with 82% of the territory either within militarized areas or under displacement orders. (OCHA)

Since 14 August, an estimated **446,115** movements have been observed, including **397,291** movements crossing from North to South.

IDPs are facing many challenges related to a lack of plots of land to erect tents or makeshift shelters, high rental fees for land or housing units, transportation costs, high prices of shelter materials, severe overcrowding at displacement sites, and the lack of services.

Gaza Shelter Cluster Meeting: 21 Sep 2025

Discussed topics:

- Situation in the North, Needs assessment, shelter assistance provided and requirements to facilitate partners' work
- Update on the preclearance rejections, and the need to resubmit partners' requests to COGAT in light of the extension of the registration until the end of the year
- The need to conduct field assessments and market surveys
- Update on plans to import shelter materials
- Brainstorming on other potential options to support vulnerable households
- Winterization plans of partners

Gaza SAG Meeting: 25 Sep 2025

Recommended # of tarps per household:

Intervention to be tailored based on needs:

4 tarps for new displaced with no form of shelter, complemented by E-Vouchers

2 tarps for maintenance or repair of existing makeshift shelter

Winterization preparedness

The winterization recommendations document is prepared by the Cluster, reviewed by partners, and has been shared with SMC for their inputs. The technical team is revising emergency assistance packages.

Partners' presence in the North

The situation in the North is very difficult, hard to move due to military operations, still not expecting all to evacuate, some people will stay, and some partners' staff will be staying there. What can they do to support displaced people?

Alternative options of Shelter response

GENERAL UPDATES

HF reserve allocation,

5 shelter partners (Gaza) were requested to submit through the GMS under the 2025 Third Reserve Allocation - Track 2 (48 Hours Allocation): The Grants Management System (GMS) was open between Monday 22nd September 2025 till Thursday, 25th September 2025 (23:45 Jerusalem time).

Shelter Responses Over the past 2 weeks:

- Dispatch of Tents and other shelter materials from Jordan and Egypt corridors to KS
- Entry of shelter items to the South and Middle areas. Some successful deliveries, some intercepted by crowds.
- Distribution of received shelter items to the most vulnerable IDPs at different sites and to referred protection cases.

Full details will be provided by the IM update

WB UPDATE

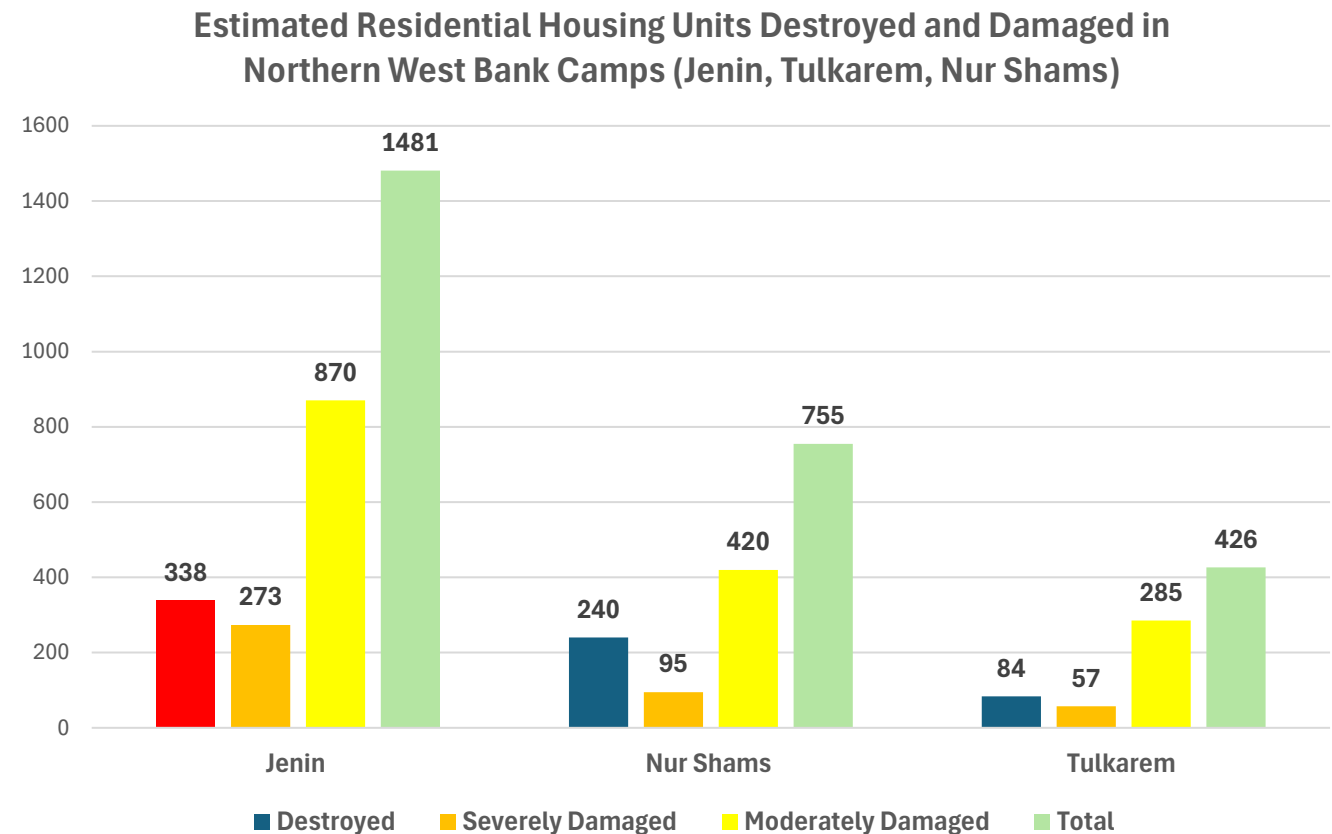
UNOSAT Damage Assessment in Tulkarem, Nur Shams, and Jenin Refugee Camps. Latest satellite imagery acquired: 21 May 2025

Building damage classifications:

- Destroyed
- Severely Damaged
- Moderately Damaged

Estimated Residential Housing Units Destroyed and Damaged in Northern West Bank Camps (Jenin, Tulkarem, Nur Shams)

	Jenin	Nur Shams	Tulkarem	Total
Destroyed	338	240	84	662
Severely Damaged	273	95	57	425
Moderately Damaged	870	420	285	1575
Total	1481	755	426	2662



WB UPDATES

Jenin Camp

Estimated Residential Units
Destroyed: **338 HUs**
Severely Damaged: **611 HUs**
Moderately Damaged :**870 HUs**



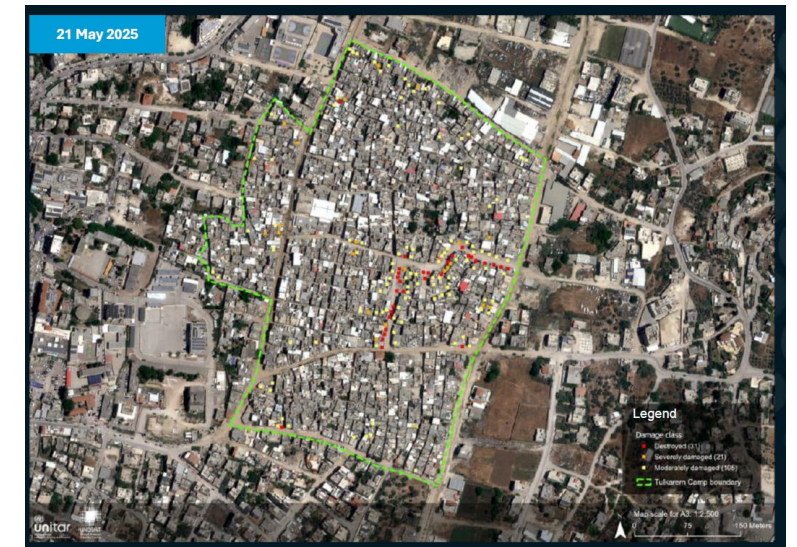
Nur Shams Camp

Estimated Residential Units
Destroyed: **240 HUs**
Severely Damaged: **95 HUs**
Moderately Damaged :**420 HUs**



Tulkarem Camp

Estimated Residential Units
Destroyed: **84 HUs**
Severely Damaged: **57 HUs**
Moderately Damaged :**285 HUs**



What does destruction and damage mean?

- Based on the 21 May 2025 imagery analysis, around **33% of the residential units** in the camps are either destroyed or damaged.
- It is estimated that **more than 1,000 families** will not be able to return to their homes, even if return will be permitted. Displacement could become permanent due to possible **Israeli restrictions** on reconstructing houses along the newly opened roads inside the camps.
- The Cluster will work to update the damage analysis with new satellite imagery. It is expected that the level of destruction and damage in the upcoming imagery will be significantly higher than in the current analysis.
- In the meantime, the Cluster will continue efforts to **identify dignified, adequate, and temporary shelter solutions for the displaced population (over 32,000 people).**

Rapid Rental Market Assessment: Tulkarm & Jenin Governorates



Partners Participated in the assessment : PARC, WeWorld, ACF, ACTED, NRC,

Rapid Rental Market Assessment

1. Context

- Military operations (early 2025) → 39,000+ IDPs displaced from the three camps.
- With nearly the entire refugees displaced from the camps, rental housing emerged as the **primary coping option mainly in Tulkarem and Jenin Governorates** .
- Current rental assistance is short-term, fragmented, and insufficient to meet growing demand.

2. Methodology

- **Data collection:** 30 Key Informant Interviews conducted **13–20 July 2025**.
- **Participants:** Landlords, displaced tenants, municipal councils, brokers, rental experts, and humanitarian actors.
- **Coverage:** Tulkarm & Jenin governorates.
- **Focus:** Access to housing, pricing patterns, practices, affordability, and protection risks.
- **Note:** Findings are **qualitative and indicative**, highlighting trends rather than statistically representative results.

Access to the report available on SC website [HERE](#)

Key findings

- **Informal access:** Strong reliance on kinship/social networks → isolated families excluded.
- **Affordability crisis:**
 - Tulkarm: high rents limit access for low-income families.
 - Jenin: scarcity forces households into **outskirts, overcrowded, or substandard units**.
- **Housing types:** Tulkarm = standard apartments (often unfinished). Jenin = student housing, caravans, very small units.

Prices & Supply

- **Rising rents due to demand/supply imbalance.**
- Typical ranges:
 - Small/low quality: **500–800 NIS**.
 - Larger apartments: **1,800–2,000 NIS**.
 - IDPs typically pay **1,000–1,500 NIS + utilities**.
- Jenin faces **severe shortage** of family-sized units; Tulkarm supply slightly better.



Tenure Insecurity and Barriers

Tenure Security & Practices

- **Oral agreements** dominate; payments often via cash.
- **Eviction risks** for non-payment are high.
- **Advance rent demands** (3–12 months) block access for vulnerable families.
- Humanitarian **lump-sum support (3 months advance)** increased landlord willingness.

Institutional & Programmatic Environment

- **No rental regulation or oversight** at local/national levels.
- Municipal support = **short-term subsidies**, inconsistent.
- Humanitarian aid = **1,000 NIS/month × 3 months**, targeted to the most vulnerable.
- Barriers continue: funding gaps, and insufficient housing stock.

Landlords & Access

- **Barriers:** fear of non-payment, family size, reputation, security concerns.
- **Positive practices:** rent reductions for vulnerable families; kinship solidarity.
- Rental assistance **improves trust and access** but hosting is shifting from **solidarity to burden**.

Key Messages

1. **Access depends on networks:** Families without kinship ties are systematically excluded.
2. **Affordability crisis:** Rents exceed incomes; most households cannot self-sustain.
3. **Informal and unregulated market:** Oral agreements dominate, exposing tenants to abuse.
4. **High eviction risk:** Advance rent demands and weak protections increase vulnerability.
5. **Short-term humanitarian gaps:** Fragmented aid undermines stability.
6. **Landlord cooperation:** Guaranteed payments help, but hosting fatigue is rising.

Recommendations

Immediate (3–6 months):

- Extend rental assistance for vulnerable families.
- Use lump-sum payments to align with landlord practices and improve access.

Medium-Term:

- Strengthen tenant protections and fair dispute resolution.
- Expand affordable housing through rehabilitation, subsidies, and incentives.
- Improve coordination among humanitarian, municipal, and national actors.

Long-Term:

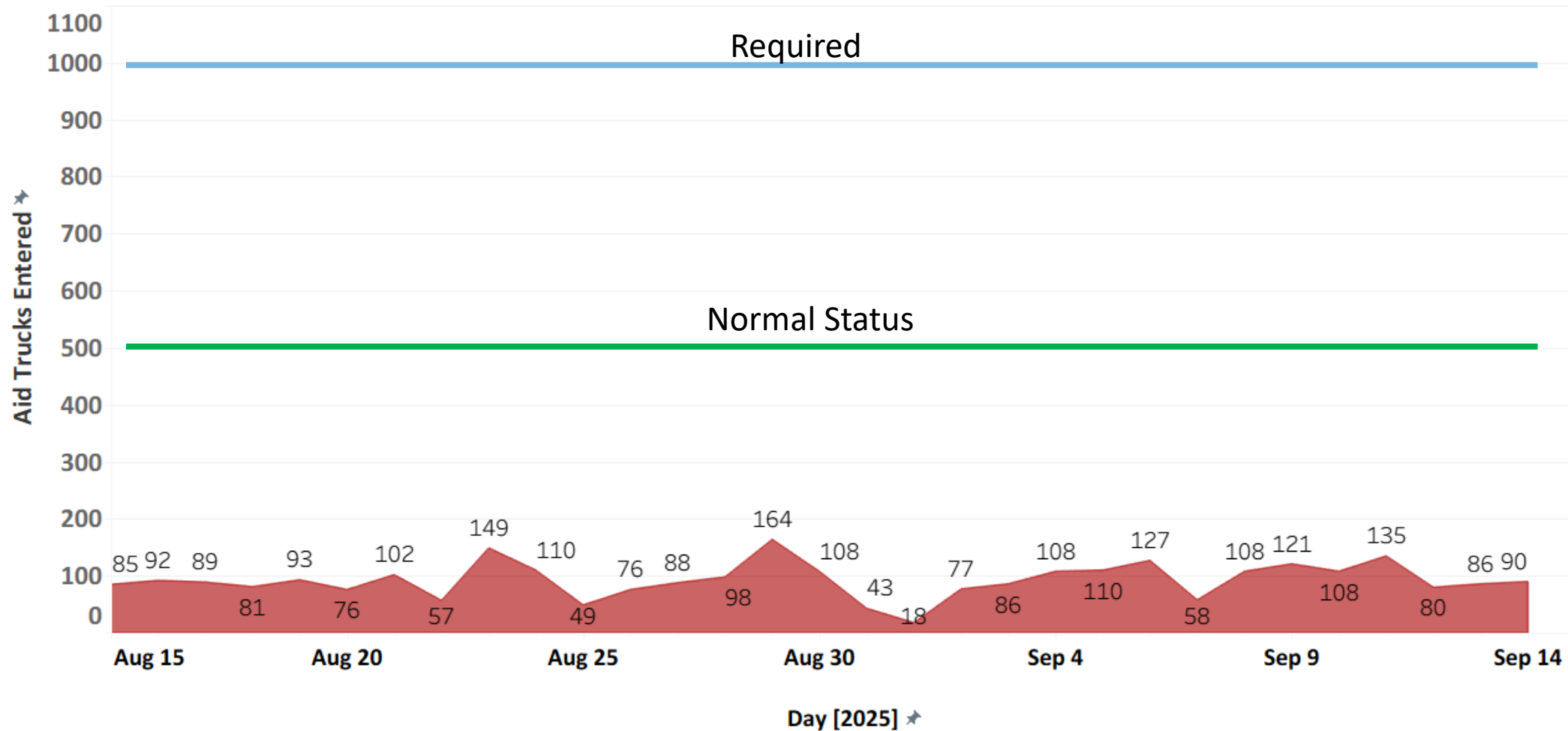
- Develop a sustained rental strategy linking humanitarian and government responses.
- Prioritize inclusive planning to prevent secondary displacement and ensure durable solutions.

- Access to the report available on SC website [HERE](#)

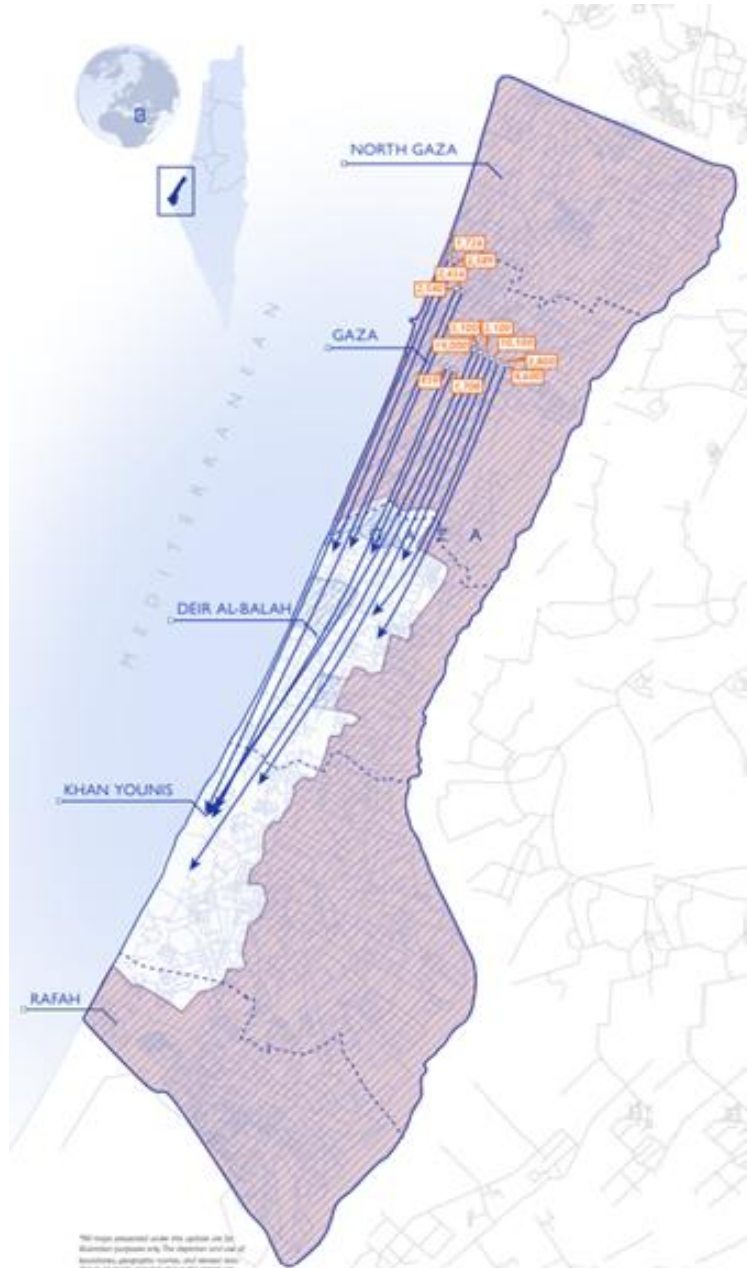
IM UPDATE (Gaza)

IM UPDATES (Truck Movement Status)

Available stock of key
shelter items in Gaza
(North and South), as of
[30 Sep 2025].



IM UPDATES (Where the IDPs are)



IM UPDATES (Shelter Items Status)



TENT

11.10K

Tents Entered To Gaza Strip



TENT

6.44K

Tents Distributed



TARPAULIN

16.16K

Tarps Entered to Gaza Strip



TARPAULIN

4.90K

Tarps Distributed



54.08K

Bedding items Entered



39.55K

Bedding items Distributed

IM UPDATES (Stock Status)



TENT

632 Tent



TARPAULIN

3150 P



Bedding Items

9700 P

PIPELINE OVERVIEW - GAZA EMERGENCY SHELTER AND NFI CLUSTER



1M

Shelter items in the pipeline



5.3M

NFIs in the pipeline

Border country

All

Type of items

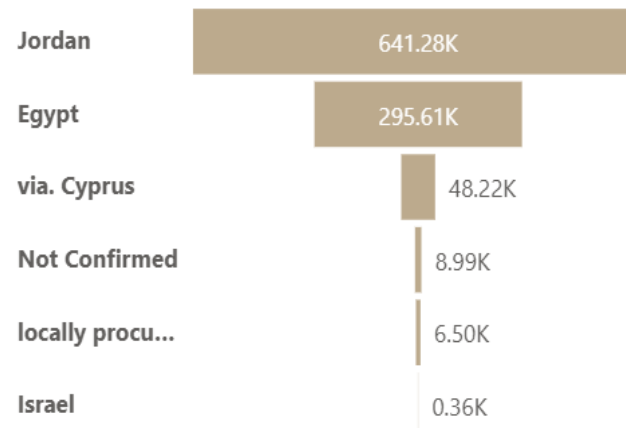
Multiple selections

Organization

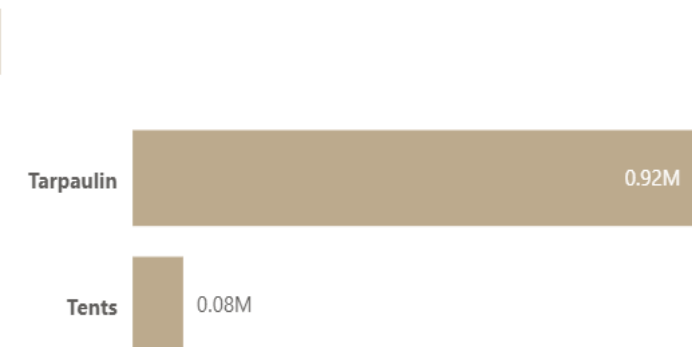
All

Items	Border country	Quantity of items
Tents	Israel	360
Tents	locally procured	1,500
Tarpaulin	locally procured	5,000
Tents	Egypt	8,612
Tents	Not Confirmed	8,993
Tarpaulin	via. Cyprus	15,380
Tents	Jordan	30,279
Tents	via. Cyprus	32,840
Tarpaulin	Egypt	287,000
Tarpaulin	Jordan	610,998
Total		1,000,962

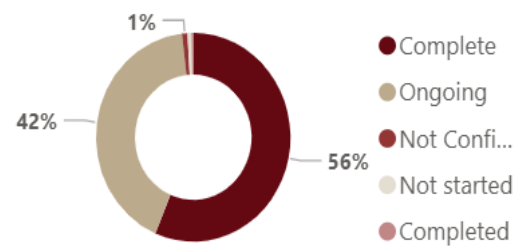
Items procured, by border



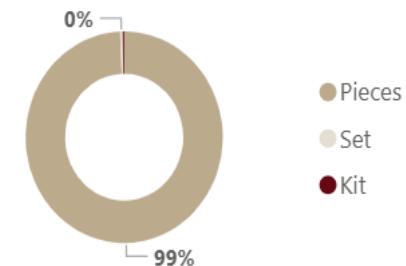
Total quantity of items under procurement/procured, by type



Item procurement status



Procured items by unit type



14

Number of organizations with items in the pipeline

IM UPDATES (Gap Analysis Result as of 30th of Sep)

Based on the number of people reached over the past six months and the number of people newly displaced during the same period, a thorough analysis—taking all relevant factors into account—indicates that a significant number of people still urgently require shelter assistance.

Emergency Shelter Items



TENT



TARPAULIN



PLASTIC
SHEET

1.47 M



PEOPLE IN
NEED

Household Items



MATTRESS



BLANKET



CLOTHING

1.46 M



PEOPLE IN
NEED

Technical Update

Technical Updates: Gaza

Gaza

- Winterization recommendations reviewed by SC partners. Shared with SMC for inputs.
- IEC Sub TWG has started working on revising winterization IEC Materials. Technical Team is contacting partners bilaterally to gather information of households' winterization local coping mechanisms.
- [Technical Guidance on Tents Assistance in Gaza](#) has been finalized and published on SC website.
- Technical meeting took place on updating of emergency assistance packages. A similar exercise will be done for West Bank.

West Bank

- Rental Assessment for WB Jenin and Tulkarm results published [here](#).
- Scoring and prioritization for rental assistance is being finalized after receiving inputs from partners.

Technical Updates: Gaza

Resources developed/ongoing by
TSA TWG on tents assistance

- Technical Guidance on Tents Assistance
- Standard Family Tent IEC
- Geodesic Tent IEC
- Fire Risk Mitigation for tents and makeshift shelters IEC



Technical Updates: Gaza

Resources developed/ongoing by
TSA TWG on tents assistance

- **Technical Guidance on Tents Assistance**
- Standard Family Tent IEC
- Geodesic Tent IEC
- Fire Risk Mitigation for tents and makeshift shelters IEC

Part of the ongoing revision of Module 1

CONTENTS

- Geographical targeting and household selection
- Distribution guidance
- Technical Quality
- Tents Minimum Standards
- Space required to set up a tent
- Tents Packaging

STATUS

Completed

[LINK](#) to document published on Shelter Cluster Website

Technical Updates: Gaza

Resources developed/ongoing by
TSA TWG on tents assistance

- Technical Guidance on Tents Assistance
- **Standard Family Tent IEC**
- Geodesic Tent IEC
- Fire Risk Mitigation for tents and makeshift shelters IEC

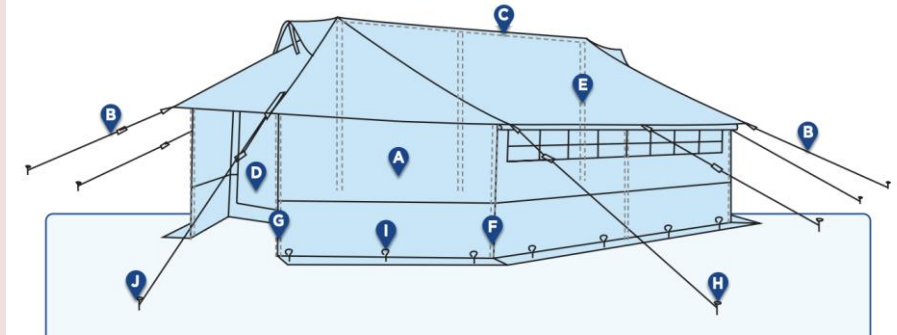
CONTENTS

- Components
- Steps for installation
- QR code linking to installation video

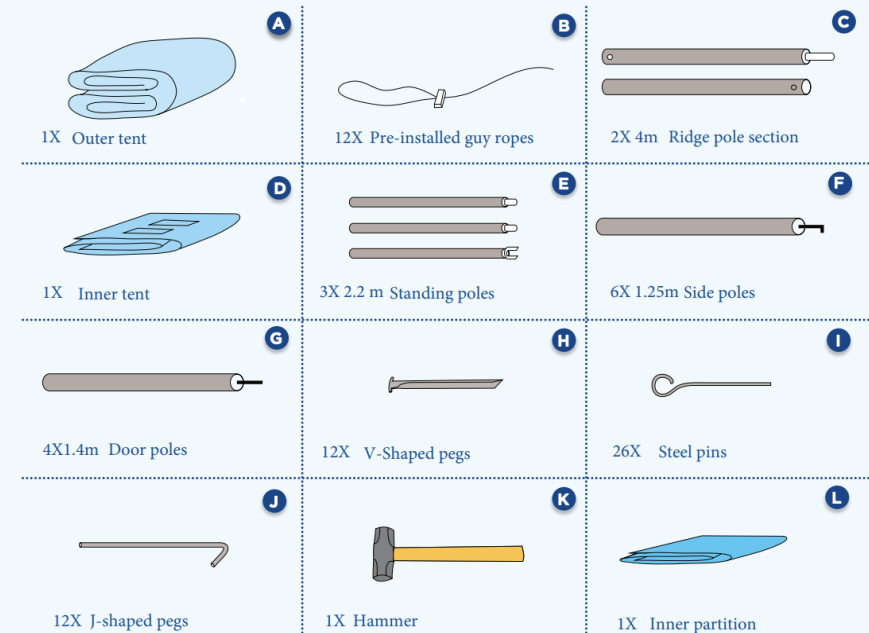
STATUS

Completed by CRS for
Shelter Cluster Palestine

[LINK](#) to IEC published on
Shelter Cluster Website
Available in English and
Arabic



Components



Technical Updates: Gaza

Resources developed/ongoing by
TSA TWG on tents assistance

- Technical Guidance on Tents Assistance
- Standard Family Tent IEC
- **Geodesic Tent IEC**
- Fire Risk Mitigation for tents and makeshift shelters IEC

CONTENTS

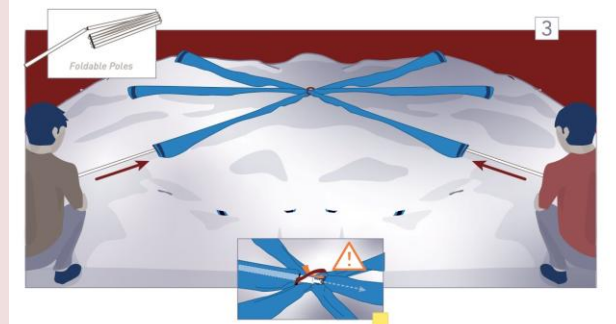
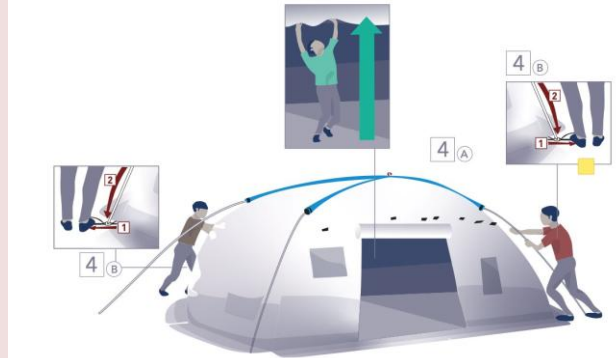
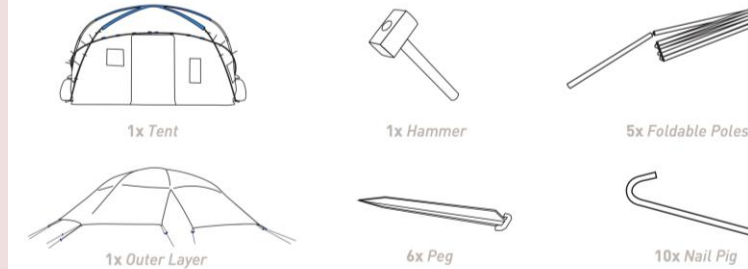
Packing list
Features of the tent
Requirements for installation
Installation steps
Fire safety awareness

STATUS

Ongoing, by IOM for
Shelter Cluster Palestine

PACKING LIST

TENT PACKED IN ONE BAG - 110 X Ø 45 CM



Technical Updates: Gaza

Resources developed/ongoing by
TSA TWG on tents assistance

- Technical Guidance on Tents Assistance
- Standard Family Tent IEC
- Geodesic Tent IEC
- Fire Risk Mitigation for tents and makeshift shelters IEC

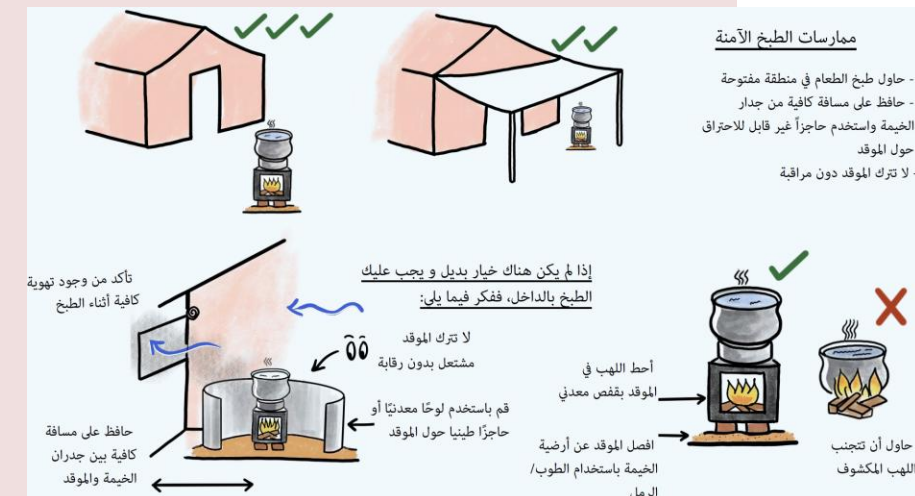
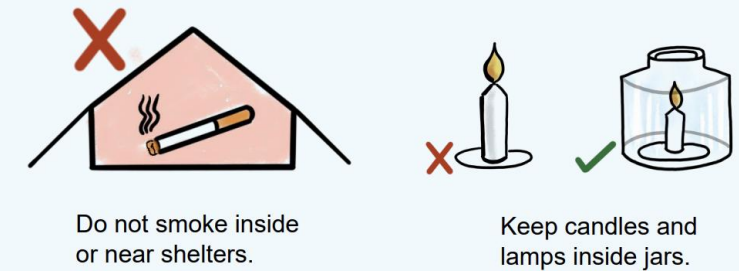
CONTENTS

Primarily around cooking
safety inside tents and
makeshift shelters

STATUS

Completed

[LINK](#) to IEC published on
Shelter Cluster Website
Available in English and
Arabic



Discussion /Q&A / AOB

- **Upcoming meetings:**

- National SAG: 2:30PM October 2nd
- Gaza Shelter Cluster meeting: 10:30 AM, Sunday October 5th
- Gaza SAG meeting: 2:00 PM, 09 October
- WB Shelter Cluster meeting: 10:00AM, Wednesday October 15th
- WB SAG meeting: 10AM, 07 October.
- **Next National Shelter Cluster meeting: 1PM, 15th October**
 - Partner presentation?