

Overview

In Amhara, North Shewa, South Wello, and North Wello zones continue to receive IDPs fleeing conflict from Oromia region and zones bordering Sudan continue to be impacted by the conflict in the neighboring country. As in other regions of Ethiopia, shelter and NFI is needed by IDPs in site and out of site, as well as by returning IDPs and affected host communities. With very limited resources, one partner provided Minor Shelter Repair kits to returning IDPs in Addi Arekay in North Gondar and to IDPs in site in Metema in West Gondar. Another partner provided Emergency Shelter Construction assistance to IDPs in sites in Kutaber and Dessie Zuria in South Wello, Emergency Shelter Repair kits to members of Host communities in Meket in North Wello and NFI in-Kind and Minor Shelter Repair kits to IDPs in camps in Debre Berhan town in North Shewa. Another partner also provided Emergency Shelter Construction to IDPs in another site in Debre Berhan town. One more partner provided ESNFI in-Kind to IDPs in sites in Thehulederie in South Wello. One partner has committed to providing Cash for Rent in three woredas (Eferatana Gidem, Tarema Ber, & Kewet) in North Shewa.

In Afar, the ES/NFI needs of thousands of conflict and flood-affected IDPs, returnees, and host communities are still unmet but partners are continuing to stretch their limited resources to meet some of the needs. One partner provided NFI in-Kind to members of Host communities in the flood-affected woredas of Mile in Awsi/Zone 1 and Hanruka in Gabi/Zone 3 and ES Kits to returning IDPs in Kunneba in Kilbati/Zone 2. Another partner is currently providing ES Kits to returning IDPs in Abaala town in Kilbati/Zone 2 and one partner has plans to provide ESNFI Mixed (Cash + in-Kind) to members of Host communities in Berahile in Kilbati/-Zone 2.

Overall Response and Gap Analysis

Over All Funding Response-Gap Analysis

Amhara Funding-Gap Analysis

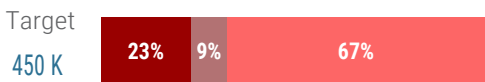


Afar Funding-Gap Analysis

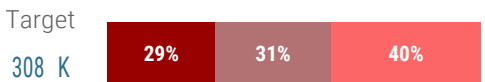


Funding Secured Funding Gap

Amhara Response-Gap Analysis

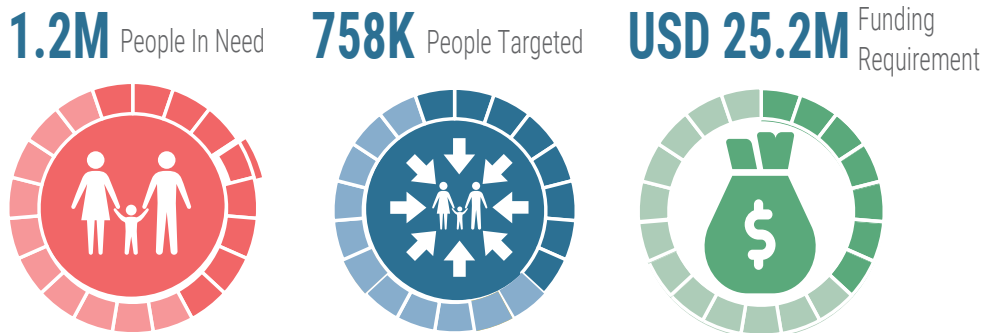


Afar Response-Gap Analysis



Reached Committed Gap

Key Figures



Response By Activity

ESNFI Assistance



NFI Assistance



Emergency Shelter Assistance



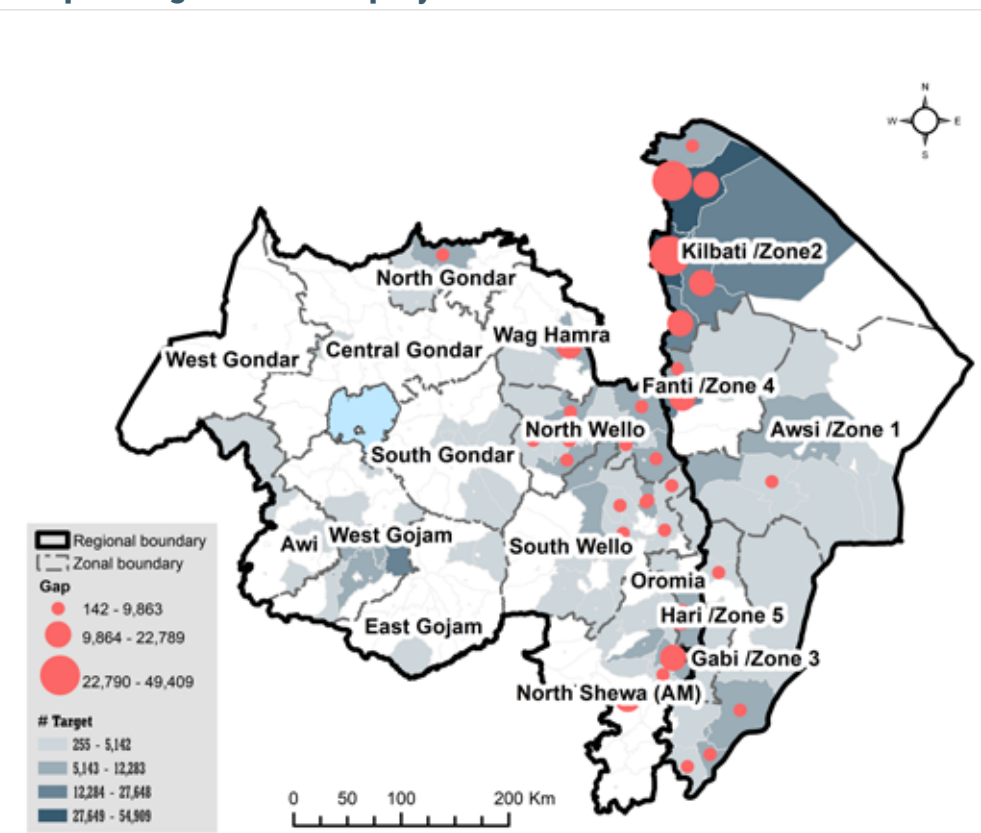
Shelter Repair Assistance



Partners Presence Map with Activities June 2023

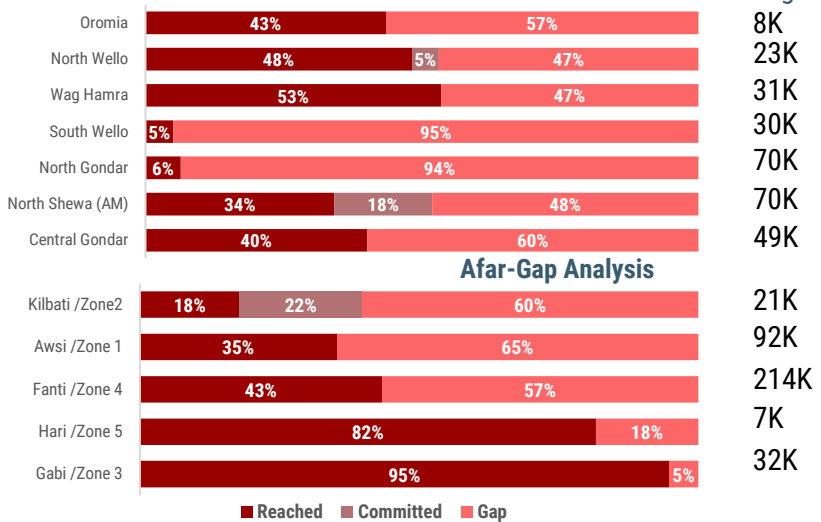
Note: The presence map shows presence of partners during the reporting month

People Targeted And Gap By Woreda

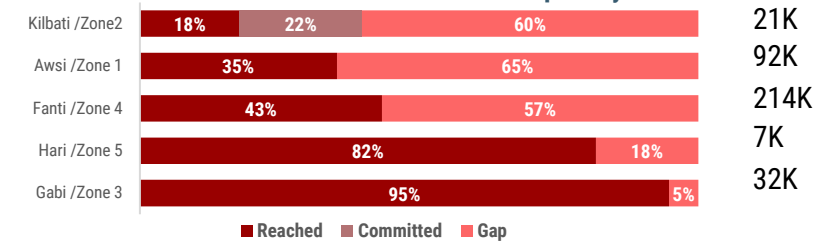


Gap Analysis Per Zone

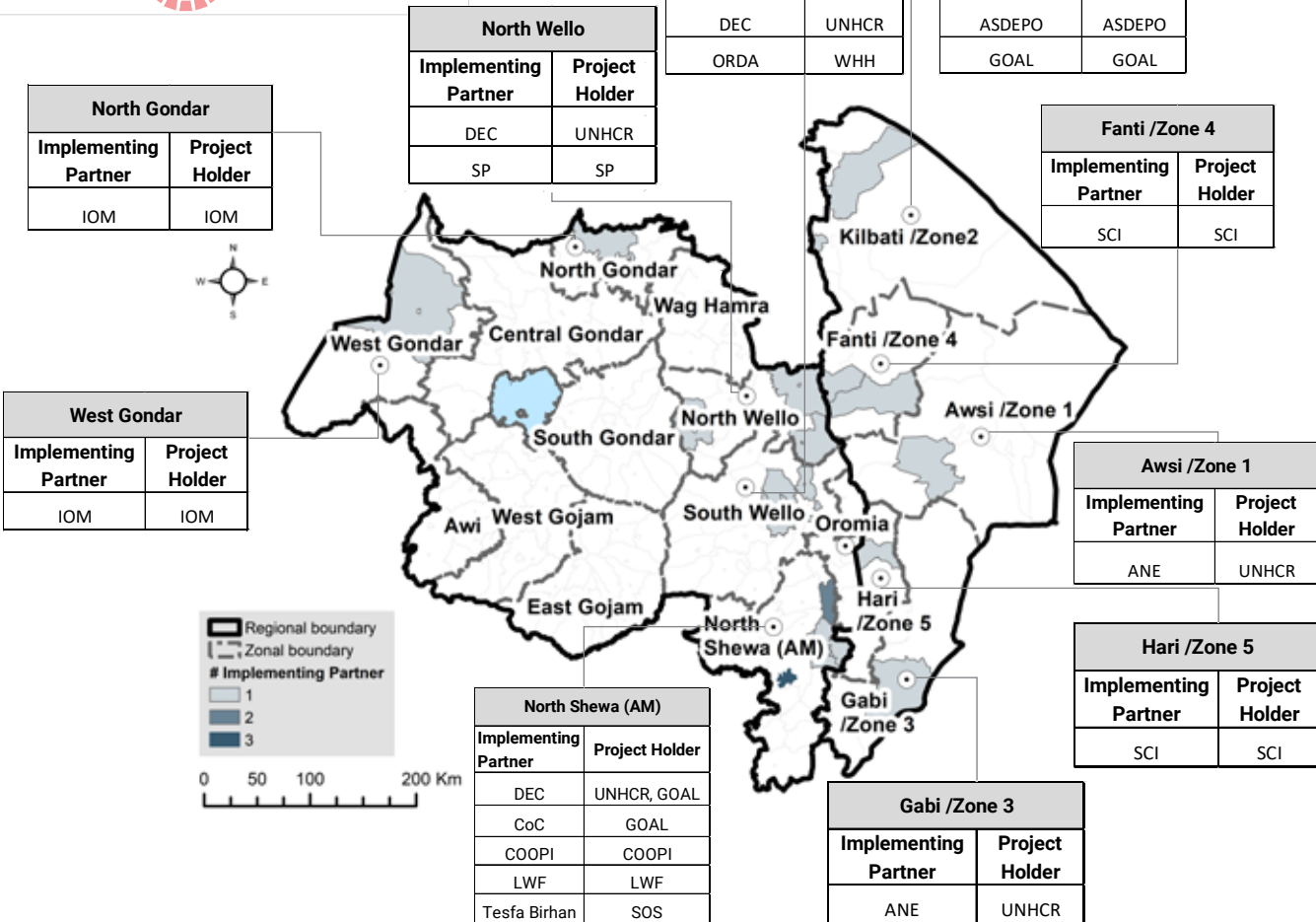
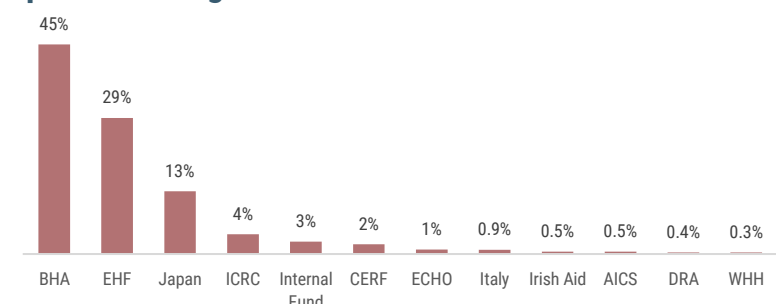
Amhara-Gap Analysis



Afar-Gap Analysis



Top Contributing Donors



Implementing Partners

Donors

