

Overview

While the overall 2023 response plan remains relevant to addressing the ES /NFI Cluster's strategic priorities, bearing in mind the shifting and the dynamic of the conflict in Ethiopia, the focus of some interventions will be recalibrated to what is critically needed for the remainder of 2023. Beyond survival, Shelter is necessary to provide security, ensure personal safety and protection, and promote resistance to ill health and disease; however, as of August, the cluster partners only reached **12%** of its target on the Shelter related activities for both IDPs and returnees. Therefore, the primary focus will be the provision of adequate Shelters to both IDPs and return living in sub-standard living conditions. These are the returnees in Afar, Amhara, Benishngul and Tigray, the IDPs in Western Oromia, Somali, Tigray and Amhara.

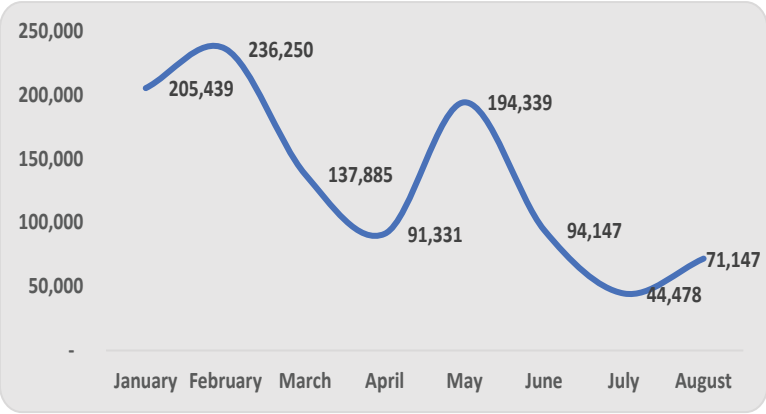
As with other clusters in the Ethiopia humanitarian response, the ESNFI Cluster implemented its activities over the last eight months against the wider overlapping issues brought upon by the pause in food aid distribution, cholera outbreak, the conflict in Amhara & Western Oromia and other challenges. As of August 31, 2023, the ES/NFI Cluster has reached, through completed activities, **34% (1.1M)** of its **3.9M** targeted population plus **10% (308K)** committed through ongoing activities and items in stock and pipeline, leaving a gap of **56% (1.8M)** more to reach for the remaining four months of the year. The numbers and percentages reached and committed were made possible through

secured funding, which is **45% (USD 55.8M)** of the required USD **124.8M**, leaving a funding gap of **55% (USD 69M)**. The top 5 donors who contributed to the secured funding are **BHA, EHF, Japan, ICRC** and **ECHO**.

By activity, NFI activities, in kind and in Cash, account for the most considerable proportion (**80%**) of the reached population, while Shelter related activities for both IDPs and Returnees have the most significant gap yet to fill (**88%**).

By population group, IDPs across the range of settlements and crisis types account for 69% of the reached, followed by returnees at 23%. A small proportion (8%) of the reached are affected non-displaced people. Cumulatively, from January to August, the achievements and gaps of the Cluster's response are based on reports submitted by 51 implementing partners consisting of 28 national NGOs, 21 international NGOs, and 2 UN agencies. However, for the month of August, only 18 partners reported. The implementing partners reporting the top 5 proportions of reached populations through completed activities are: DEC, IOM, ANE, ICRC, & SCI.

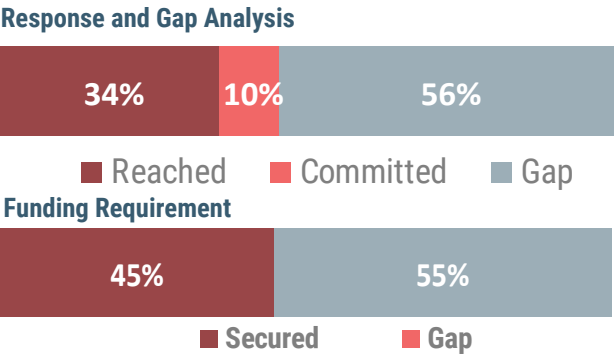
Response Trend



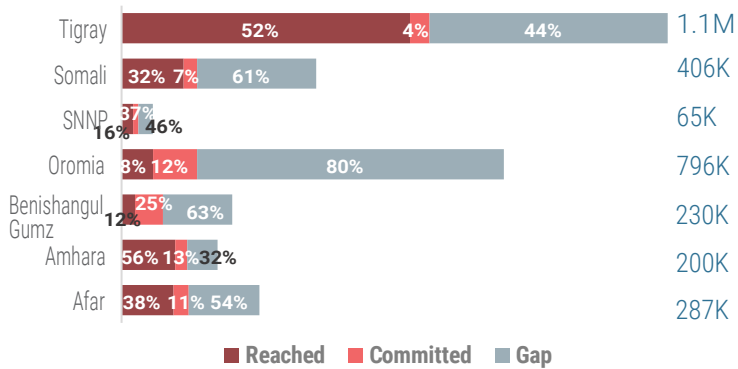
Key Figures



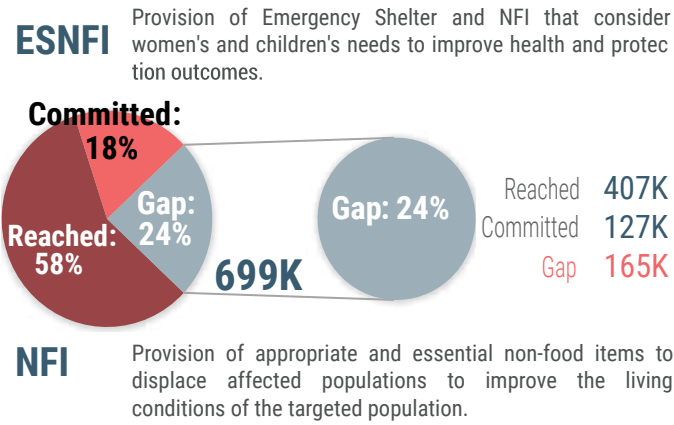
Response and Funding Gap Analysis



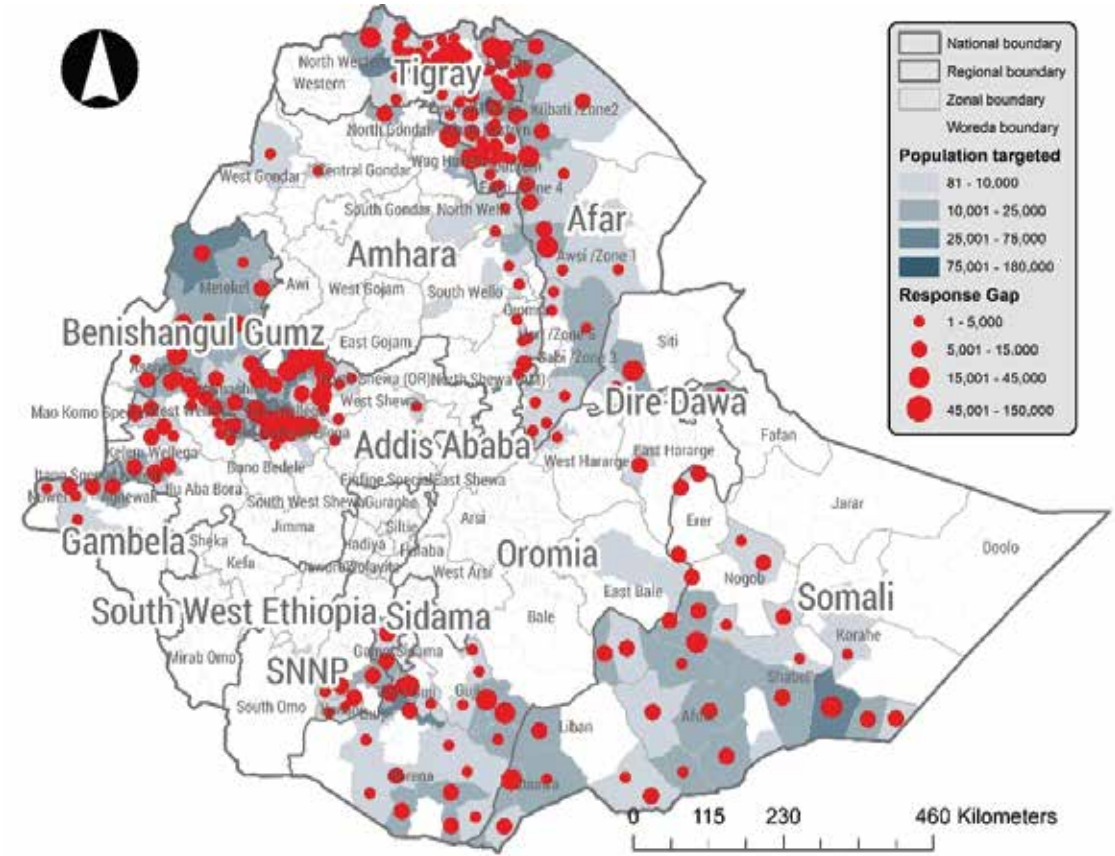
Gap Analysis By Region



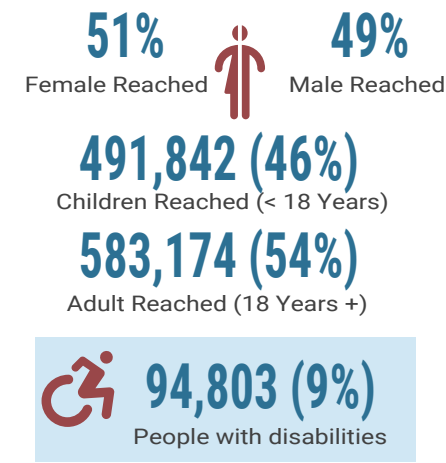
Response By Activity



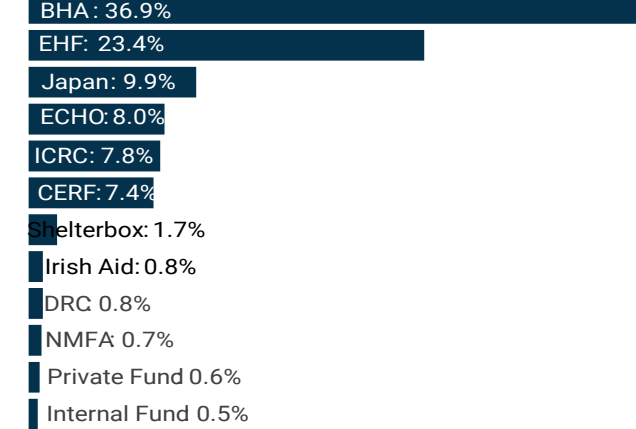
People Targeted And Gap By Woreda



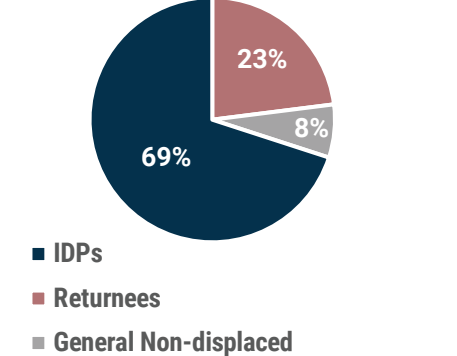
Reached By Demographics



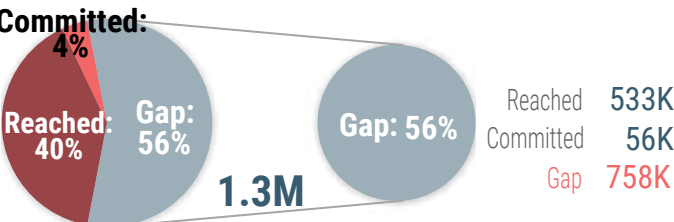
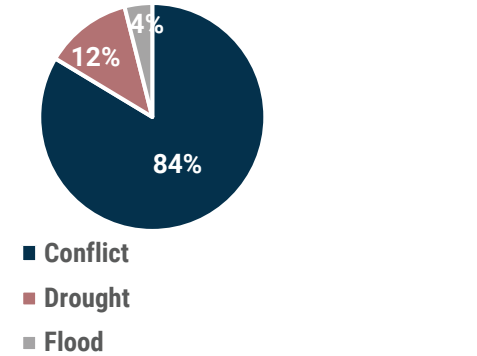
Top Contributing Donors



Response By Population Group

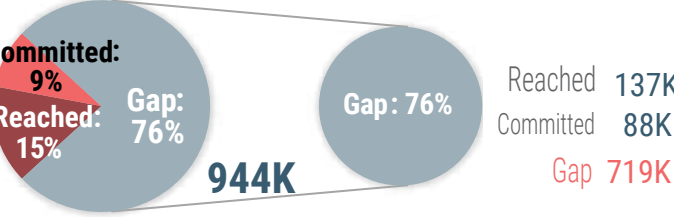


Response By Emergency Type



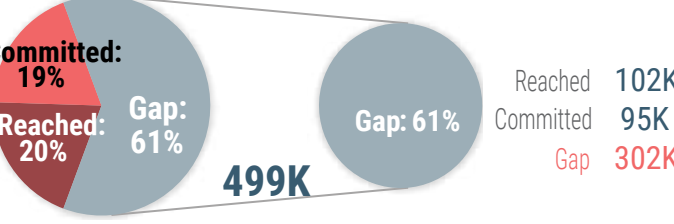
Emergency Shelter

Provision of Shelter to reduce the likelihood of health and protection consequences



Shelter Repair

Provide support to livelihood and reintegration/return/resettlement by improving shelter and related infrastructures



Implementing Partners



Donors

