

Overview

The humanitarian response in Ethiopia continues to face significant challenges due to the heavy Kiremt rains across several parts of the country. Since July 2024, the rains have intensified, particularly in August, causing rivers to overflow, flash floods, and landslides. This has resulted in displacements, fatalities, and damage to infrastructure and homes. According to OCHA, more than 85 woredas have been affected by flooding, while over 61 woredas have experienced landslides or mudslides across the Amhara, Oromia, Sidama, Southern Ethiopia, and Tigray regions.

Amid these ongoing and overlapping crises, the ESNFI cluster remains focused on ensuring that crisis-affected people have access to adequate shelter solutions and essential household items, supporting them to maintain their health, security, safety, and dignity.

By August, the ES/NFI cluster had reached **17%** of its target population in eight regions, with plans to support an additional **7%** through ongoing activities and resources in the stock and pipelines. However, **76%** (**2.4M** people) still require assistance. These efforts are critical, as displacements may rise further due to weather conditions.

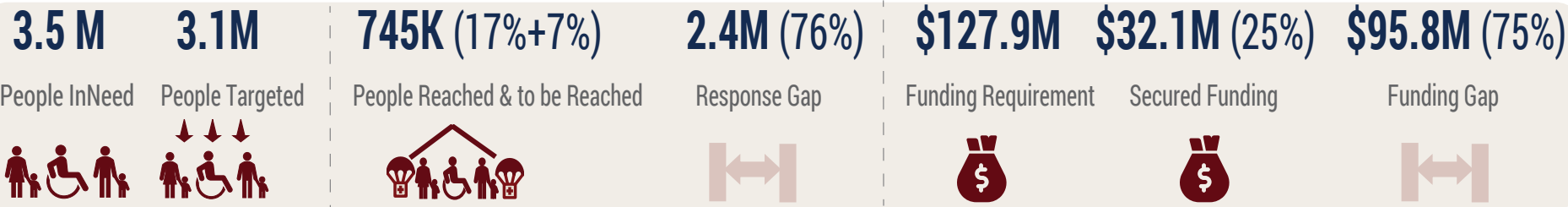
The achievements in numbers and percentages reached, as well as those committed, were made possible through secured funding, which represents **25%** (USD **32.1M**) of the required USD **127.9M**, leaving a funding gap of **75%** (USD **95.8M**). The top five donors contributing to the secured funding include BHA, EHF, CERF, German Gov. and ShelterBox.

The ES/NFI Cluster is currently engaged in prioritizing activities for the fourth quarter and formulating the Preparedness Plan for the 2024-2025.

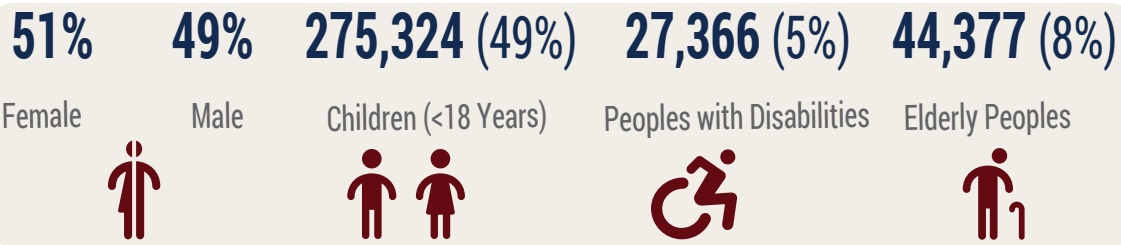


Photo credit IOM - Shelter Construction for Flood Affected IDPs, Gezei Gofa, South Ethiopia

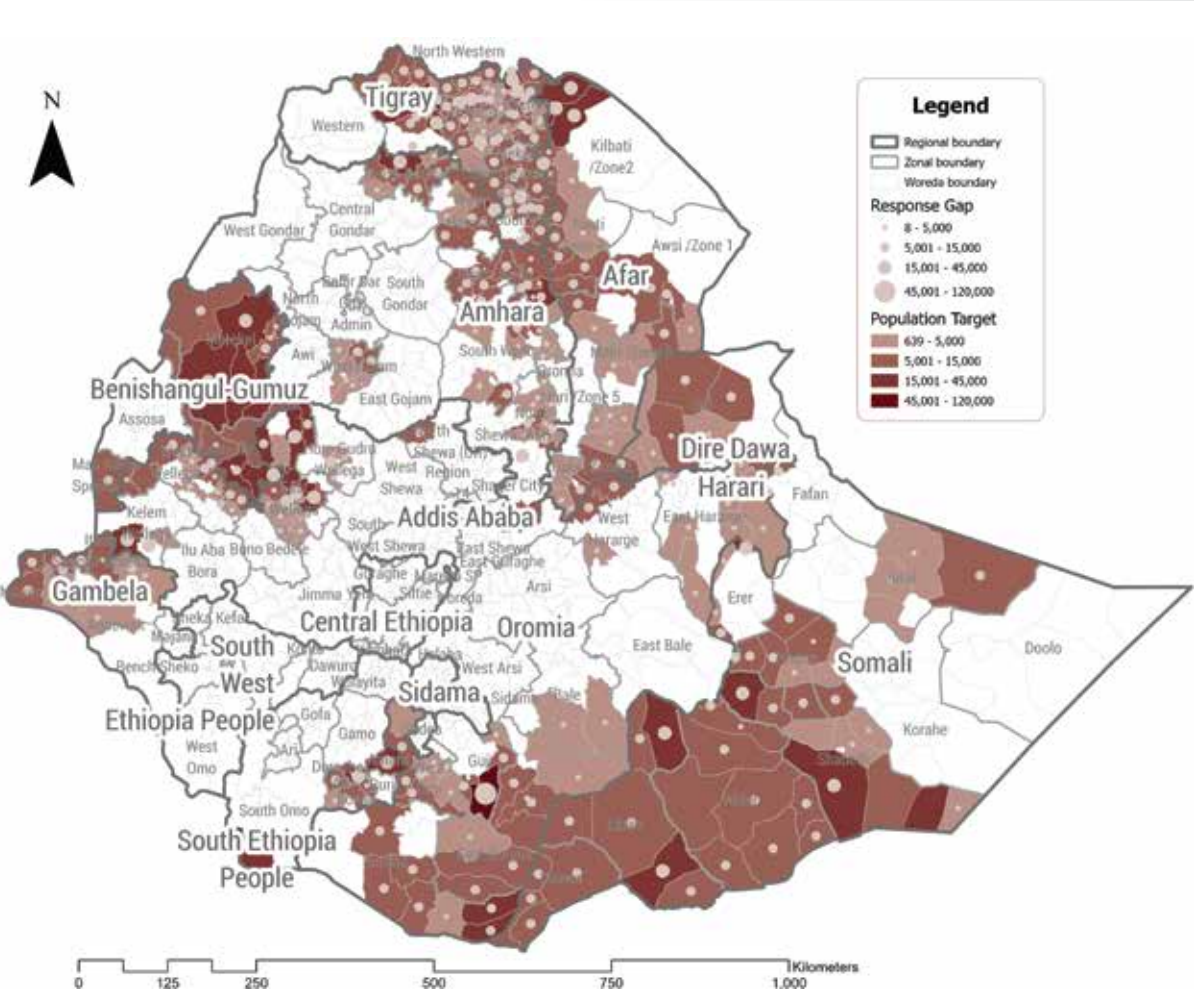
Key Figures



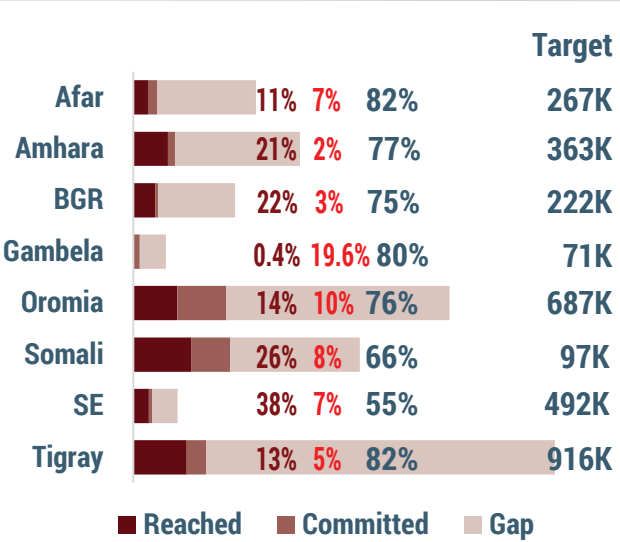
Reached by Sex and Age



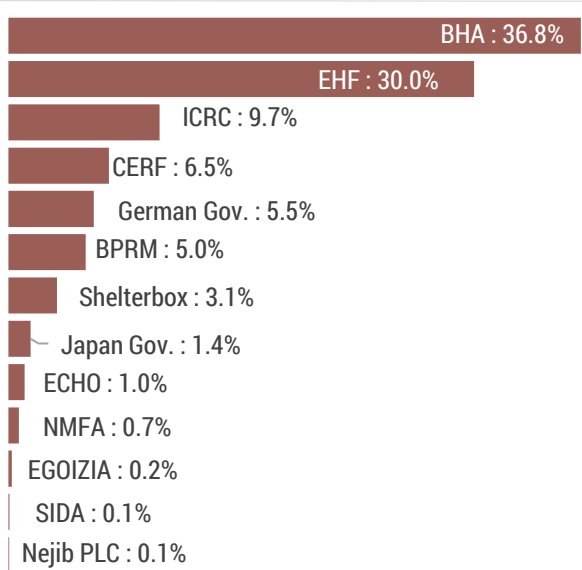
People Targeted and Gap by Woreda



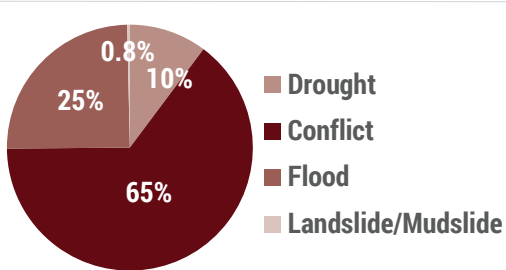
Gap Analysis by Region



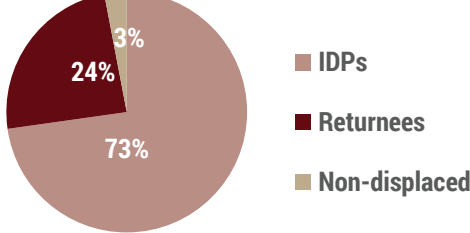
Contributing Donors



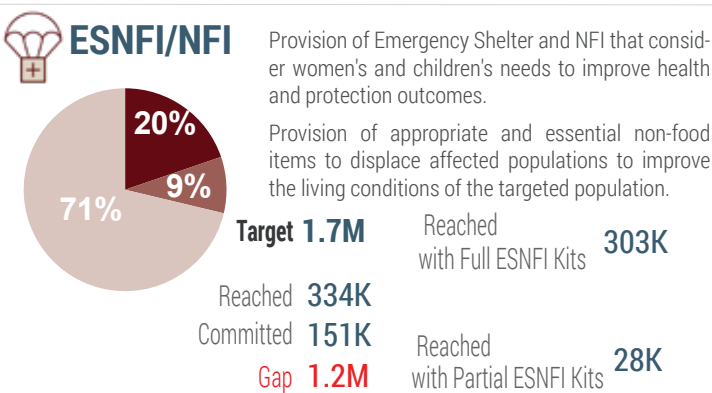
Response by Shock Type



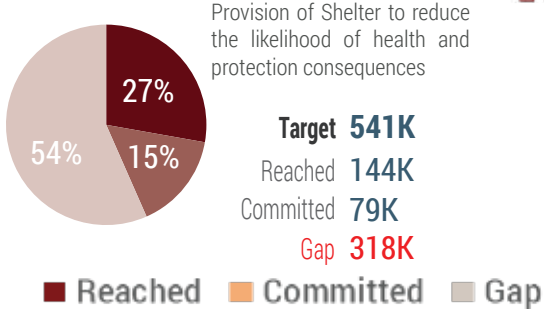
Response by Population Group



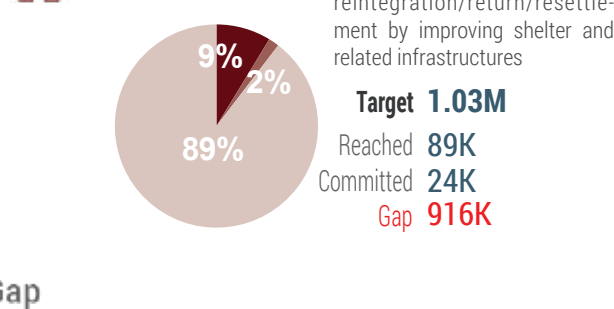
Response by Activity



Emergency Shelter



Shelter Repair



Implementing Partners

Donors

