

Overview

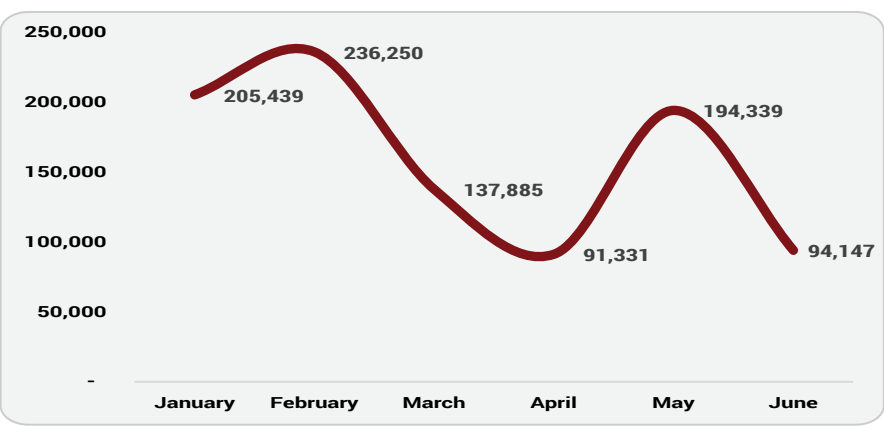
For the first half of HRP 2023 (Jan – Jun), the cluster has reached, through completed activities, **25% (959K)** of its 3.9M targeted population plus **6% (234K)** committed through ongoing activities and items in stock, leaving a gap of **69% (2.7M)** more to reach for the second half of the year. The numbers and percentages reached and committed were made possible through secured funding, which is **29% (USD 42M)** of the required USD 144.2M, leaving a funding gap of **71% (USD 102M)**.

The top 5 donors who contributed to the secured funding are BHA, EHF, Japan, ICRC and CERF. By activity, NFI activities, in kind and in cash, account for the most significant proportion (**47%**) of the reached population, while Emergency Shelter has the most significant gap yet to fill. By region, Tigray has the highest proportion of people reached (**45%**), but only **3%** committed indicates low ongoing activities and no ESNFI items in stock. Oromia remains the region with the lowest (**6%**) population reached. The gaps against the targets per region remain high, ranging from 52% for Tigray to 100% for Gambella.

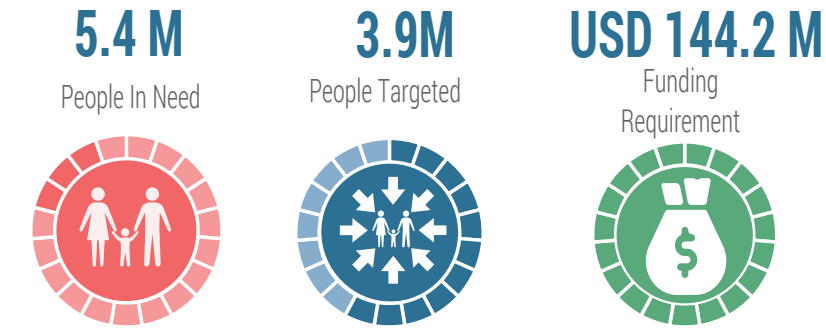
By population group, IDPs across the range of settlements and crisis types account for **72%** of the reached, followed by returnees at **21%**. A small proportion (**7%**) of the reached are affected, non-displaced people.

Cumulatively, from January to June, the achievements and gaps of the cluster's response are based on reports submitted by **41** implementing partners consisting of **24** national NGOs, **15** international NGOs, and **2** UN agencies. The implementing partners reporting the top 5 proportions of reached populations through completed activities are DEC, IOM, ANE, ICRC and SCI. However, for the month of June, only 24 partners reported. Similarly, the number of people reached, taken month by month, has increased or decreased as reporting also fluctuated as partner project funding has ended or started.

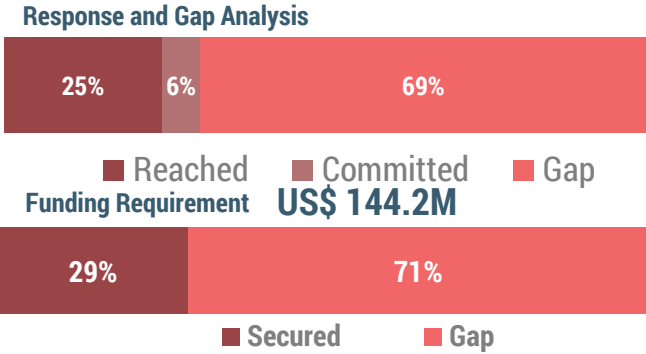
Response trend



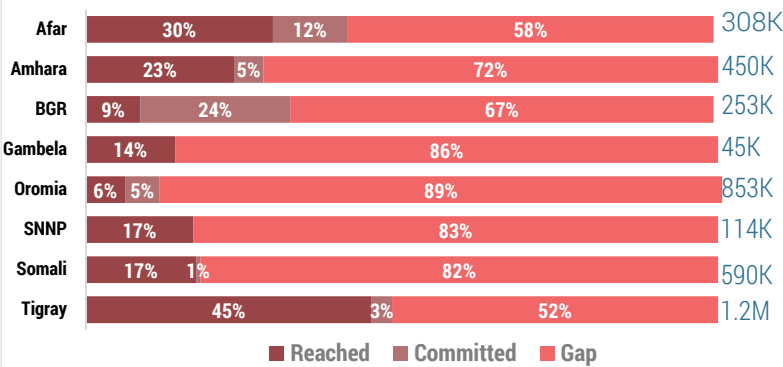
Key Figures



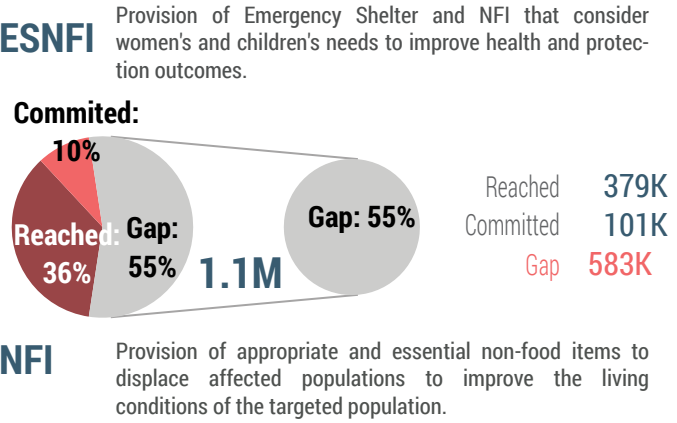
Response and Funding Gap Analysis



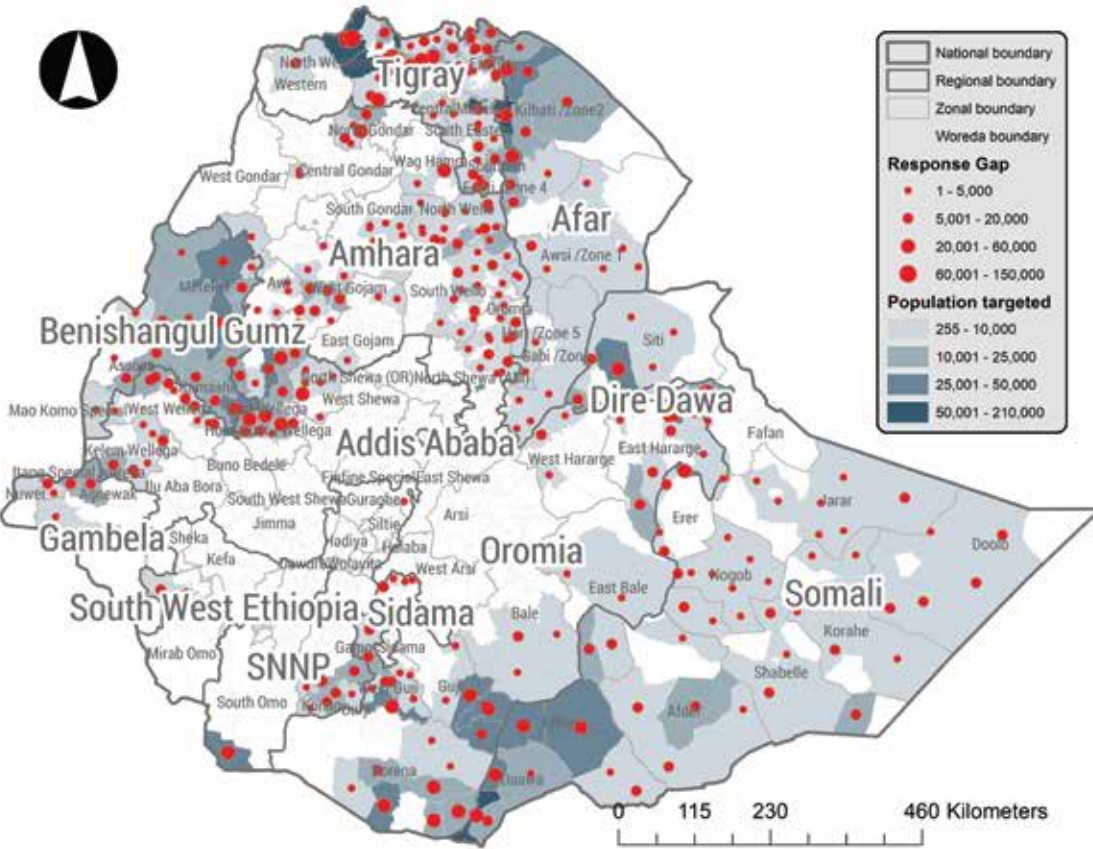
Gap Analysis By Region



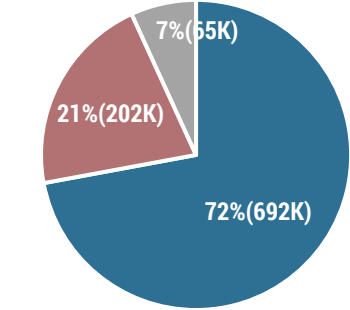
Response By Activity



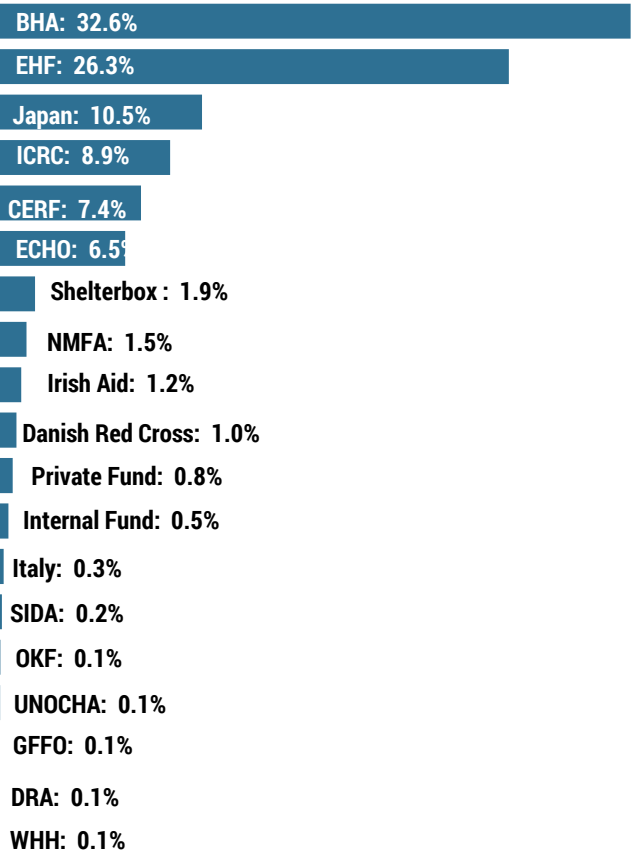
People Targeted And Gap By Woreda



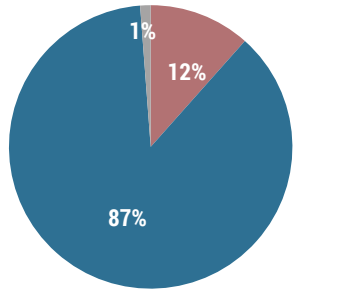
Response By Population Group



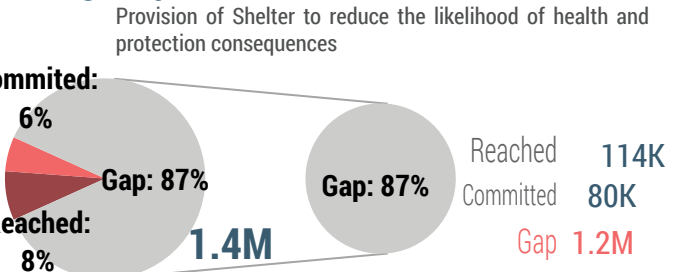
Top Contributing Donors



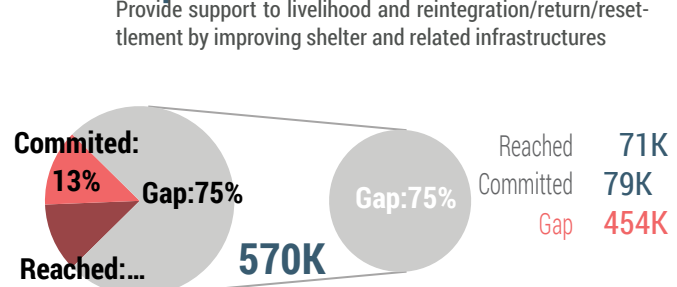
Response by Emergency Type



Emergency Shelter



Shelter Repair



Implementing Partners



Donors

