

Ethiopia ES/NFI Cluster – 3rd Round Prioritization of 2025

Responses and Priority Woredas

Snapshot as of 31
August 2025

@Vison Ethiopia



Response Monitoring Dashboard

as of 31 Aug 2025

Humanitarian Crisis Overview

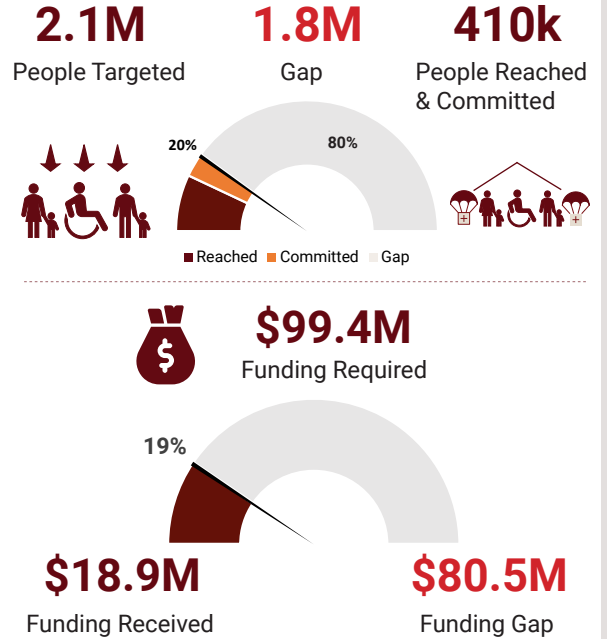
Ethiopia continues to face multiple, overlapping shocks that are driving new and sustained displacement. Recent climate-related events include strong winds and floods in IDP sites in Amhara and Tigray, along with flood-related displacements in Afar. At the same time, conflict-related displacement persists intercommunal violence along the Oromia–Somali border has resurfaced, displacing nearly 220,000 people who are now living in informal settlements, according to a recent MIRA assessment. In Western Oromia, both new displacements and returns are being reported, while in Benishangul, fresh waves of displacement have emerged over the past months, further stretching humanitarian response capacity.

The shelter and NFI needs remain largely unchanged since the second round, driven by prolonged instability and sustained displacement. Hundreds of thousands continue to live in overcrowded, unsafe, and deteriorating shelters, with limited access to essential household items and services. Many shelter structures have exceeded their intended lifespan, while NFI gaps persist due to the prolonged absence of replenishments.

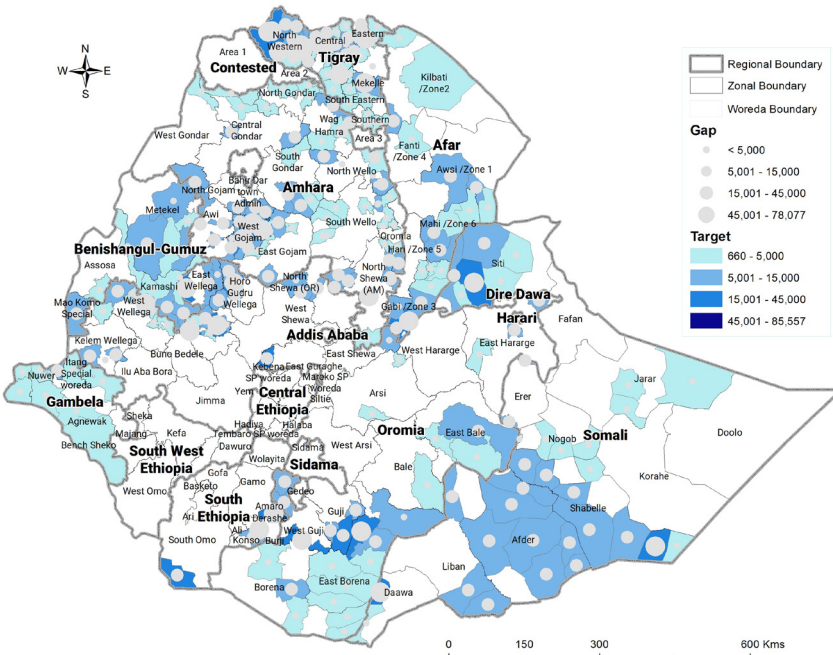
Meanwhile, response capacity has significantly declined. By 31 August 2025, the ES/NFI Cluster had reached only 14% of its 2025 target; at the same time, compared to July, the response shows a 49% decrease.

A critical constraint remains the absence of a functioning national ES/NFI pipeline, currently marked at 0%. Without prepositioned stockpiles, the Cluster's ability to deliver timely, life-saving assistance at the onset of emergencies remains severely constrained.

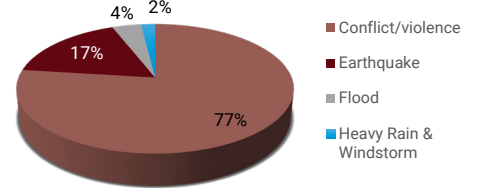
Key Figures



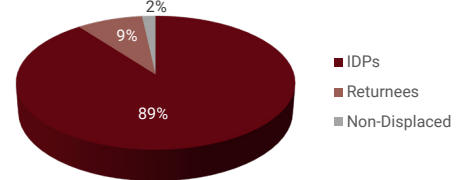
People Targeted and Reached



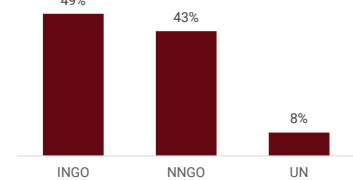
Response by Shocks Type



Response by Population Group



Response by Organization Type



Partnerships, Coverage, and Donor Support

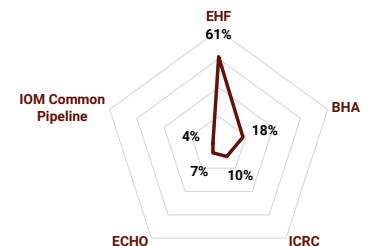
Partners Coordinated



Regions 9
 (out of 9 targeted)

Zones 28 (out of 58 targeted) **Woredas 68** (out of 265 targeted)

Funding distribution Top 5 Donors



Donors



Implementing Partners





Priority Overview



R3 Target
341k



Urgent Requirement
\$14.5M

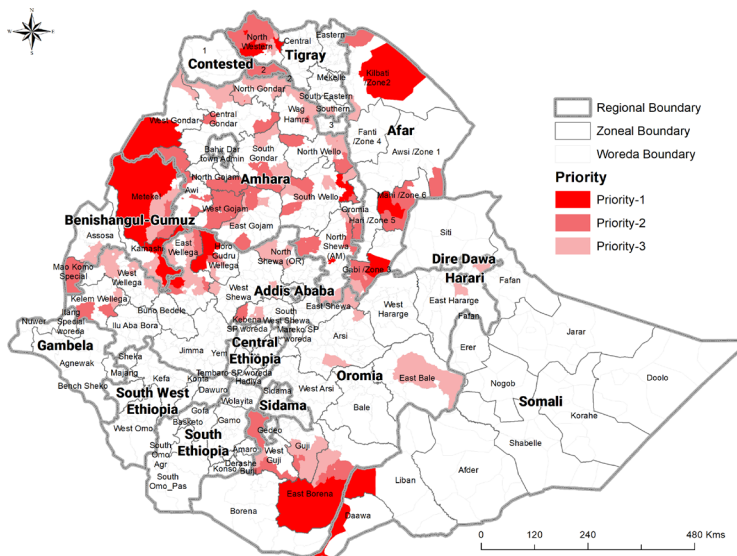


Pipeline Requirement
\$3.3M

Severity, Priority Needs, and Response

The 3rd round prioritization of 2025 brings 31 woredas as Priority Level 1, located across Afar, Amhara, Benishangul-Gumuz, Oromia, and Somali Regions. Such priorities reflect the alignment of response needs between existing gaps and recent shocks. Living conditions in collective centers and informal settlements remain a critical concern, as inadequate shelters and non-food items plague IDPs in Amhara, Oromia, and Tigray, undermining their safety, dignity, and well-being. Meanwhile, sudden outbreaks of conflicts and disasters triggered widespread displacement in Afar, Oromia, and Somali, prompting comprehensive strategization with resources available.

Prioritization follows established Cluster thresholds, assessing displacement levels, available assistance, access, recurring displacements, and coverage gaps. Compared to Round 2, Priority-1 Woredas increased from 23 to 31, while Priority-2 Woredas increased to 62, with notable regional shifts. Somali, Oromia, and Benishangul-Gumuz registered the largest increase in Priority-1 Woredas, while Afar saw a rise in Priority-2. Conversely, Tigray and Oromia recorded slight reductions. Amhara continues to host the highest number of Priority-2 Woredas.



Changes between Round 2 and Round 3 illustrate the fluid nature of displacement. Several Woredas that received assistance remain at Priority-1 due to persistent gaps, while others shifted upward from lower categories or were newly added following recent shocks. At the same time, ten Woredas were deprioritized as coverage improved and needs declined. The drivers behind this increase vary by region and are discussed in detail in the following sections.



Somali- Dawa zone Photo: ES/NFI Cluster

Strategic Priorities

The overall approach is to provide life-saving shelter and NFI support to newly displaced households through contextualized kits, while also addressing the needs of those living in substandard conditions across 66 collective centers and informal settlements in prioritized regions.

The ES/NFI Cluster will prioritize:

- **Provision of emergency shelters** for displaced populations in collective centers and informal sites, where exposure to the elements leaves people without adequate protection.
- **Rental support** for vulnerable households within host communities, with a particular focus on those recently displaced in **Amhara and Western Oromia**;
- **Distribution of ES/NFI kits** to meet the immediate needs of newly displaced households and those lacking essential household items.

The Cluster aims to reach **341,000** individuals in this round. Achieving this will require at least **USD 14.5** million in new funding to stabilize operations, close critical gaps, and scale up life-saving shelter and NFI assistance where it is needed most.

To ensure the effective use of limited resources, all partners are strongly encouraged to coordinate closely with sub-national ES/NFI Clusters and align interventions with the latest prioritization guidance.

Regional Priorities

Benishangul, Oromia and Somail

In **Benishangul-Gumuz**, humanitarian needs are driven not only by insecurity within the region but also by access challenges created by instability in the bordering regions, which significantly hampers the delivery of assistance. Over the past two months, fresh waves of displacement have been reported, compounding already fragile conditions and leaving both returnees and IDPs exposed to persistent shelter and NFI gaps. The most affected and prioritized woredas include **Dangur, Guba, and Wembera in Metekel Zone**, as well as **Zayi and Mezniga in Kamashi Zone**. These areas remain underserved due to a combination of insecurity, restricted humanitarian access, and limited operational presence, leaving displaced families with little or no assistance and heightening their vulnerability to protection risks and deteriorating living conditions.

In **Oromia**, emergency needs are driven by both **intercommunal conflict along the Oromia–Somali border and insecurity in Western Oromia**, compounded by simultaneous displacement and return dynamics. In **Horo Gudru Wollega Zone**, recent displacements have forced IDPs in **Abe Dongoro and Jardega Jarte** to shelter in **overcrowded collective centers and schools**, where conditions are dire. **Amuru** is experiencing similar challenges. Meanwhile, in **East Wellega**, returns are being reported, particularly in **Sasiga**, where support is urgently needed to stabilize returnee populations.

At the same time, the **East Borena Zone** has been heavily affected by the **intercommunal conflict along the Oromia–Somali border**. In **Gumi Eldalo, Arero, Dhas, and Wachile**, violence and ethnic tensions have triggered large-scale displacement, leaving IDPs in overcrowded and inadequate shelter conditions. The strain on host communities and the absence of sufficient ES/NFI assistance have further heightened protection risks. Together, these woredas represent some of the most acute needs in Oromia and are therefore prioritized for life-saving shelter and NFI interventions.



R3 Target
154k



Urgent Requirement
\$5.7M

Priority Locations and Planned Activities

Benishangul-Gumuz



R3 Target
45k

Kamashi

Mezniga, Zayi



Urgent Requirement
\$1.7M

Metekel

Dangur, Guba & Wenbera

Somali



R3 Target
44k

Liban

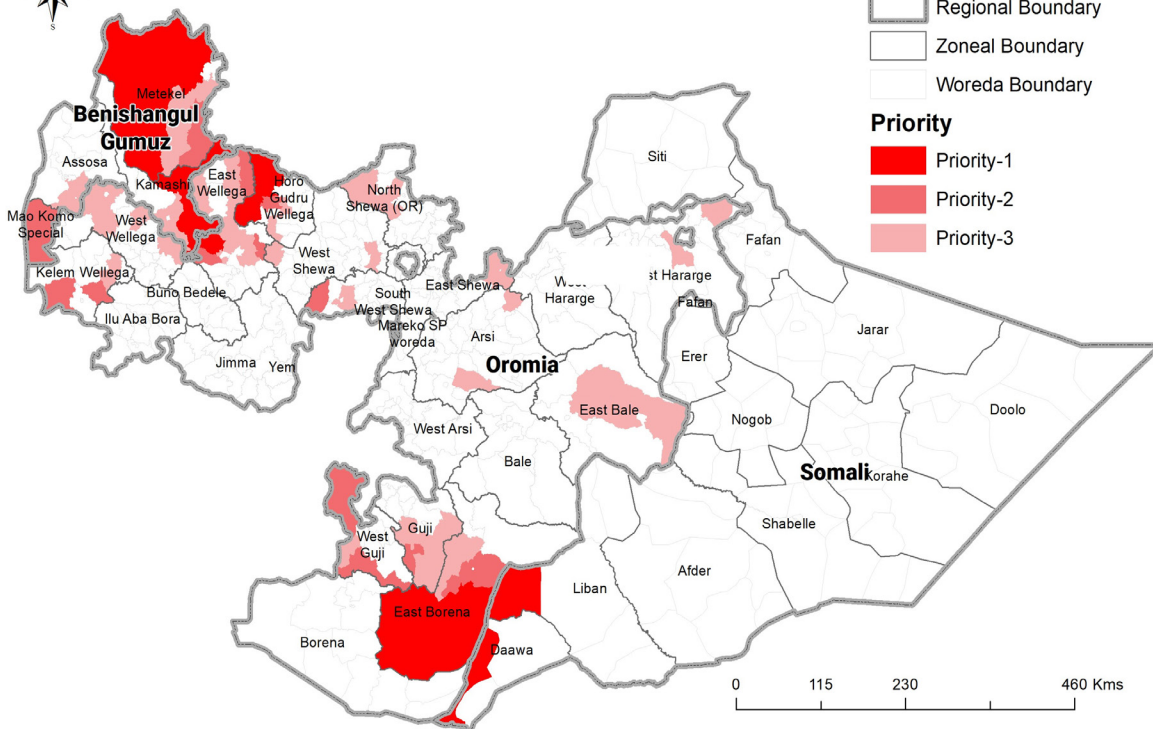
Deka Suftu
Quarsadula



Urgent Requirement
\$1.1M

Daawa

Hudet, Moyale (SM)



- Regional Boundary
- Zoneal Boundary
- Woreda Boundary

Priority

- Priority-1
- Priority-2
- Priority-3

0 115 230 460 Kms

Oromia



R3 Target
65k

East Borena

Arero
Dhas
Gumi Eldalo
Wachile

East Welega

Sasiga
Horo Gudru Wellega
Abe Dongoro, Amuru
Jarte Jardega



Urgent Requirement
2.9M

Response Options

Emergency shelter kits for new IDPs and Rental support to IDPs in host communities and Emergency Shelter Repair kit for the returnees.



Distribution of Full ESNFI kit for new IDPs and Mobility-adapted ESNFI kits for those people affected by recurring shocks.



Protection-sensitive interventions, with a focus on GBV risk mitigation and improved site safety.





R3 Target
182k



Urgent Requirement
\$8.8M

Afar

In Afar, humanitarian needs are shaped by the combined impact of climate shocks and prolonged displacement. Strong winds and floods have severely affected IDP sites, damaging shelters and worsening already fragile living conditions. These events have compounded the vulnerabilities of communities that were previously displaced by conflict, leaving them with heightened and more complex needs.

Amhara

Amhara continues to face both new displacement driven by ongoing insecurity and the prolonged hardship of existing IDPs living in substandard conditions. Currently, 44 sites host over 55,000 IDPs, most of which are operating beyond capacity. North Wello, South Wello, and North Shewa account for the majority of sites, where conflict dynamics and strained response capacity continue to drive severe shelter and NFI shortages. A significant number of IDPs also live with host communities, often unsupported and facing threats of eviction and deteriorating livelihoods.

Within this context, Debre Birhan has emerged as one of the most severe hotspots, with more than 10,000 IDPs in the China camp and over 5,000 IDPs in Woyнешet camp living in extremely overcrowded and difficult conditions. Shelters are inadequate,

NFIs are lacking, and congestion is driving heightened health, safety, and protection risks.

At the same time, close to 43,000 people have been newly displaced in North Gondar and West Gondar, according to the regional OCHA bureau. Debarke has been particularly affected, where recent waves of displacement have compounded already fragile conditions. Many of the newly displaced are sheltering with overstretched host communities, in unfinished buildings, or in rented rooms that provide little protection. No formal ES/NFI support has been provided, leaving families highly vulnerable.

The Cluster continues to push for focused support in Debre Birhan, Debarke, Thehulederie, and Quara, recognizing these locations as among the most critical in the region for life-saving shelter and NFI interventions.

Tigray

For Tigray, the 3rd round prioritization directs on-hand resources to the most critical and underserved gaps, eyeing both immediate life-saving assistance and longer-term adaptive planning for evolving displacement and return dynamics. Unresolved shelter and NFI needs persist at 38 sites, with half located in school facilities, many of which exhibit significant fragility as conditions deteriorate over extended periods. Ongoing return processes bring about prospects of long-term stabilization, yet not without active support to bridge post-conflict gaps in basic services.

Displacement sites in Shire, Sheraro, Laelay Koraro, Maekel Adiyabo, Asgeda, Seyemti Adiyabo, and Endabaguna are heavily affected by recent storms, with damaged shelters exposing families of IDPs. Growing congestion from households moving from host communities into collective centers further worsens living conditions, warranting rental support and targeted shelter interventions. In Tahtay Adiyabo, returnees are particularly vulnerable, with over 95% living in damaged houses or the open, pressing for shelter repair as a key priority to prevent secondary displacement and stabilize communities.

Priority Locations and Planned Activities

Amhara



R3 Target
81k



Urgent Requirement
\$4.4M

North Gondar

Debark town

North Shewa (AM)

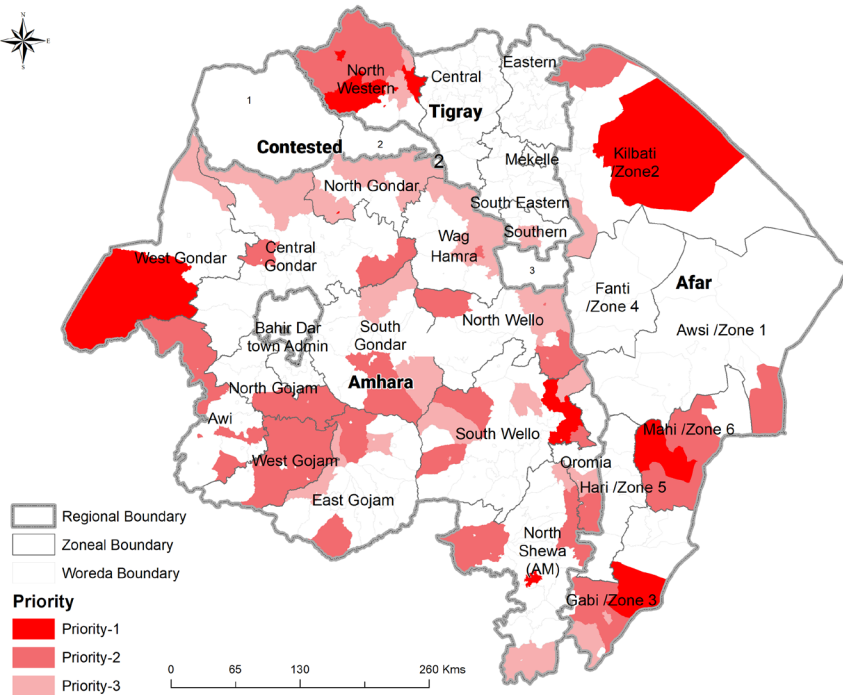
Debreberhan town

South wello

Hike town, Kalu, Thehulederie

West Gondar

Quara



Tigray



R3 Target
74k



Urgent Requirement
\$3.8M

North Western

Asgede, Sheraro town
Endabaguna town, Laelay
koraro, Shire Endaslasie
town

Afar



R3 Target
27k



Urgent Requirement
\$675k

Gabi/Zone3

Hanruka

Kilbati/Zone2

Afdera

Mahi/Zone6

Yangudi

Response Options

Emergency shelter to rehabilitate shelters in IDP sites, and rental support for the most vulnerable IDPs in host communities.



Distribution of NFI kits, Integrated Shelter & Essential NFIs (with optional bedding or Kitchen set) for the existing IDPs (specially in Amhara) and Flood-ESNFI kits.



Construction of emergency shelters to decongest overcrowded collective centers.



Protection-sensitive interventions, with a focus on GBV risk mitigation and improved site safety.



Photo: ESNFI Cluster

ANNEX

Ethiopia ES/NFI Cluster 3rd Round

Priority 1 Woredas

Region	Zone	Woreda	Target	R3_Priority Level
Tigray	North Western	Asgede	31,599	Priority-1
Tigray	North Western	Sheraro town	19,870	Priority-1
Tigray	North Western	Shire Endaslasie town	85,557	Priority-1
Tigray	North Western	Lalay Koraro	9,033	Priority-1
Tigray	North Western	Endabaguna town	13,348	Priority-1
Afar	Kilbati /Zone2	Afdera	12,116	Priority-1
Afar	Gabi /Zone 3	Hanruka	18,615	Priority-1
Afar	Mahi /Zone 6	Yangudi	6,658	Priority-1
Amhara	North Gondar	Debark town	29,400	Priority-1
Amhara	South Wello	Thehulederie	5,110	Priority-1
Amhara	South Wello	Kalu	3,734	Priority-1
Amhara	South Wello	Hike town	3,758	Priority-1
Amhara	North Shewa (AM)	Debre Berhan town	27,117	Priority-1
Amhara	West Gondar	Quara	14,700	Priority-1
Oromia	East Wellega	Sasiga	8,541	Priority-1
Oromia	Horo Gudru Wellega	Jarte Jardega	28,988	Priority-1
Oromia	Horo Gudru Wellega	Amuru	14,558	Priority-1
Oromia	Horo Gudru Wellega	Abe Dongoro	10,653	Priority-1
Oromia	East Borena	Gumi Idalo	8,872	Priority-1
Oromia	East Borena	Arero	10,336	Priority-1
Oromia	East Borena	Wachile	19,913	Priority-1
Oromia	East Borena	Dhas	58,271	Priority-1
Somali	Liban	Quarsadula	5,818	Priority-1
Somali	Liban	Deka Suftu	11,684	Priority-1
Somali	Daawa	Moyale (SM)	55,309	Priority-1
Somali	Daawa	Hudet	66,949	Priority-1
Benishangul-Gumuz	Metekel	Dangur	16,037	Priority-1
Benishangul-Gumuz	Metekel	Guba	2,872	Priority-1
Benishangul-Gumuz	Metekel	Wembera	9,712	Priority-1
Benishangul-Gumuz	Kamashi	Zayi	14,216	Priority-1
Benishangul-Gumuz	Kamashi	Mezniga	17,354	Priority-1

Priority 2 Woredas

Region	Zone	Woreda	Total Target including New IDP	R3 Priority
Tigray	North Western	Tahtay Adiyabo	22,126	Priority-2
Tigray	North Western	Seyemti Adiyabo	7,349	Priority-2
Tigray	North Western	Adi Daero	9,747	Priority-2
Tigray	North Western	Maekel Adiyabo	6,917	Priority-2
Afar	Awsi /Zone 1	Afambo	5,621	Priority-2
Afar	Kilbati /Zone2	Dalol	2,527	Priority-2
Afar	Gabi /Zone 3	Amibara	23,145	Priority-2
Afar	Gabi /Zone 3	Dulecha	36,666	Priority-2
Afar	Mahi /Zone 6	Kilalu	4,277	Priority-2
Afar	Mahi /Zone 6	Sibaybi	7,346	Priority-2
Amhara	South Gondar	Semada	5,727	Priority-2
Amhara	South Gondar	East Esite	8,523	Priority-2
Amhara	North Wello	Bugna	6,733	Priority-2
Amhara	North Wello	Habru	10,194	Priority-2
Amhara	North Wello	Kobo town	9,383	Priority-2
Amhara	South Wello	Argoba	3,423	Priority-2
Amhara	South Wello	Borena/Debresina	3,934	Priority-2
Amhara	South Wello	Mekdela	4,206	Priority-2
Amhara	North Shewa (AM)	Merhabete	9,682	Priority-2
Amhara	North Shewa (AM)	Ensaro	6,374	Priority-2
Amhara	North Shewa (AM)	Moretna Jiru	7,812	Priority-2
Amhara	North Shewa (AM)	Eferatana Gidem	12,243	Priority-2
Amhara	North Shewa (AM)	Kewet	10,689	Priority-2
Amhara	North Shewa (AM)	Shoa Robit	6,099	Priority-2
Amhara	East Gojam	Hulet Ej Enese	7,054	Priority-2
Amhara	East Gojam	Baso Liben	5,041	Priority-2
Amhara	West Gojam	Sekela	9,916	Priority-2
Amhara	West Gojam	Quarit	18,639	Priority-2
Amhara	West Gojam	Dega Damot	40,670	Priority-2
Amhara	West Gojam	Dembecha	8,167	Priority-2
Amhara	West Gojam	Jabi Tehnan	19,382	Priority-2

Priority 2 Woredas

Region	Zone	Woreda	Total Target including New IDP	R3 Priority
Amhara	West Gojam	Bure (AM)	6,335	Priority-2
Amhara	Wag Hamra	Sekota town	8,710	Priority-2
Amhara	Awi	Banja	7,190	Priority-2
Amhara	Awi	Jawi	7,871	Priority-2
Amhara	Awi	Ayehu Guwagusa	6,982	Priority-2
Amhara	Awi	Chagni town	5,418	Priority-2
Amhara	Oromia	Jilye Tumuga	5,463	Priority-2
Amhara	Central Gondar	Chilga 1	9,293	Priority-2
Amhara	Central Gondar	East Belesa	9,220	Priority-2
Amhara	North Gojam	Yilmana Densa	5,415	Priority-2
Amhara	North Gojam	Debub Mecha	7,304	Priority-2
Amhara	North Gojam	Gonje	9,598	Priority-2
Oromia	East Wellega	Gobu Seyo	5,039	Priority-2
Oromia	East Wellega	Diga	20,153	Priority-2
Oromia	East Wellega	Kiremu	6,875	Priority-2
Oromia	South West Shewa	Ameya	18,886	Priority-2
Oromia	Guji	Aga Wayu	5,429	Priority-2
Oromia	West Guji	Abaya	12,970	Priority-2
Oromia	West Guji	Dugda Dawa	19,175	Priority-2
Oromia	West Guji	Gelana (West Guji)	13,989	Priority-2
Oromia	Kelem Wellega	Hawa Galan	6,650	Priority-2
Oromia	Kelem Wellega	Anfilo	5,342	Priority-2
Oromia	Horo Gudru Wellega	Horo Buluk	6,782	Priority-2
Oromia	East Borena	Liben	5,922	Priority-2
Somali	Siti	Daymeed	22,000	Priority-2
Somali	Siti	Dhunyar	24,000	Priority-2
Benishangul-Gumuz	Metekel	Dibate	7,815	Priority-2
Benishangul-Gumuz	Mao Komo Special	Maokomo Special	9,721	Priority-2
Contested	2	Tselemti/ West Telemt	9,951	Priority-2
Contested	2	Lelay Tselemti/ Dima	12,084	Priority-2
Contested	2	May Tsebri town	20,852	Priority-2



Borena, Photo: ES/NFI Cluster



www.sheltercluster.org

[www. EthiopiaESNFIClusterResources.com](http://www.EthiopiaESNFIClusterResources.com)