

Overview

In Afar, response to the ES/NFI needs of more than 200K returnees in Kilbati/Zone 2, Fanti/Zone 4 and Awsi/Zone 1 remains a top priority for the ES/NFI Cluster, especially around Abaala town of Kilbati/Zone 2 where three fourths of the homes were completely destroyed due to conflict.

Returnees still live in precarious makeshift shelters and others stay with relatives while waiting for assistance to repair their damaged homes and some issues of housing, land, and property (HLP) prevail in Abaala. While the return exercises in the region have been completed, there are still around 57K IDPs across all zones of the region, displaced by conflict, drought, or floods, most of whom are living in spontaneous sites where shelter and NFI needs are critical.

Despite the limited resources to meet huge unmet needs, ES/NFI interventions are ongoing in the region, including a training on Targeting Guidelines and Good Distribution conducted by the cluster in September to help partners respond more efficiently to the needs of affected populations. So far, the cluster has reached 117K, (58%) conflict and flood-affected people in 2023, leaving a gap of 145K (50%) people.

In Amhara, the Region's humanitarian response to the needs of close to 400K returnees largely in the South Wollo and North Shewa zones and around 66K IDPs, also largely in the North Shewa and South Wollo zones remains minimal due to limited funding and access to some IDP sites. The implementation of humanitarian interventions, including ESNFI, continues to be coordinated with decisions on where and when to lift the suspension of food distributions. So far, the cluster has reached 116K, (58%) conflict-affected people in 2023, leaving a gap of 54K (27%) people.

Overall Response and Gap Analysis

Amhara Funding-Gap Analysis



Afar Funding-Gap Analysis

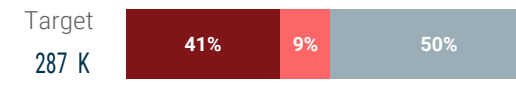


Funding Secured Funding Gap

Amhara Response-Gap Analysis



Afar Response-Gap Analysis

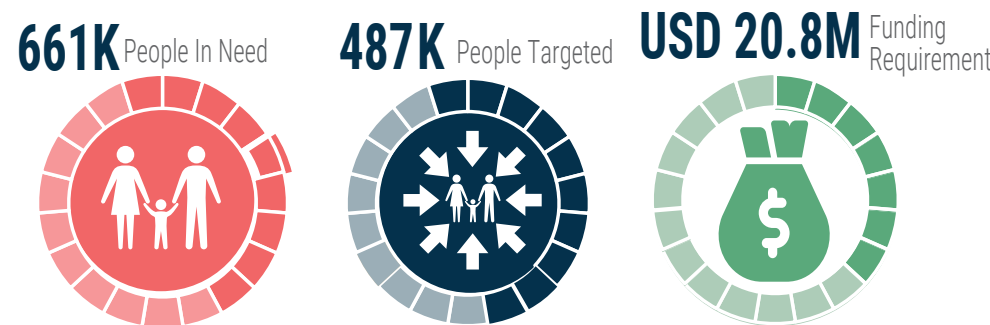


Reached Committed Gap

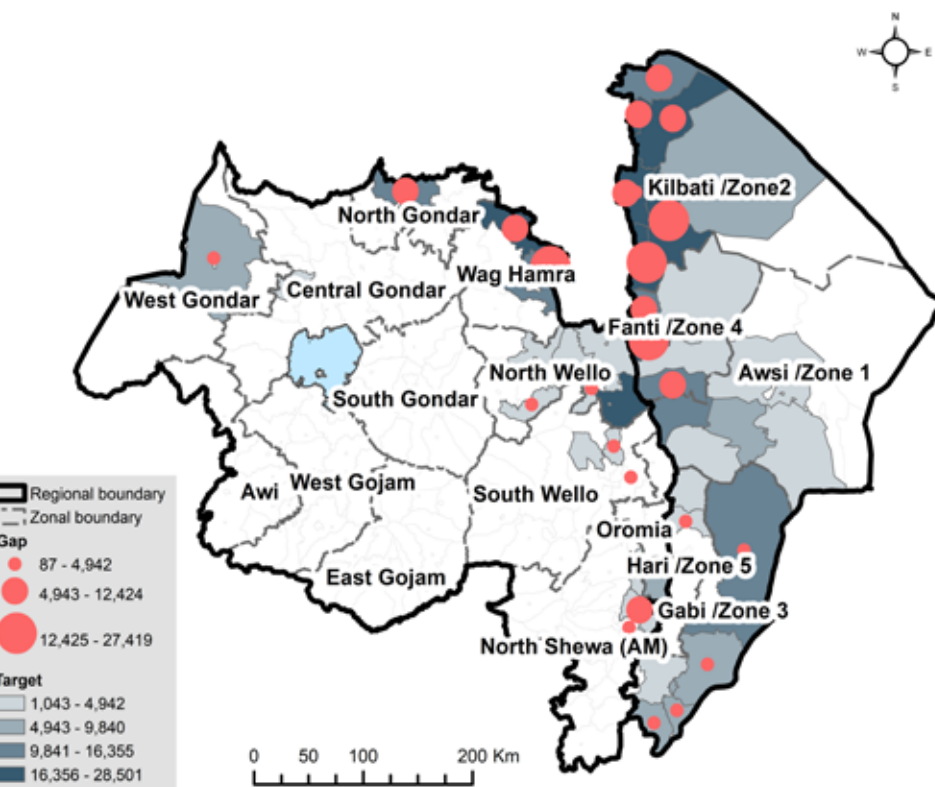


Beneficiary in Bure Kebele, Berhale Woreda ,Afar Region

Key Figures



People Targeted And Gap By Woreda



Response By Activity

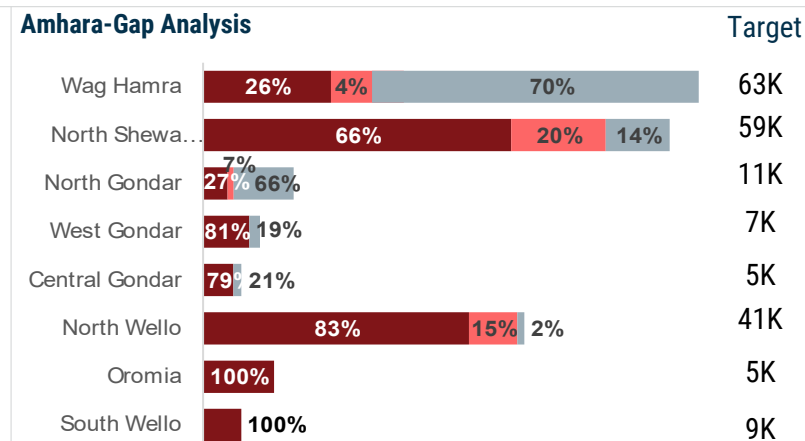
ESNFI/NFI Assistance



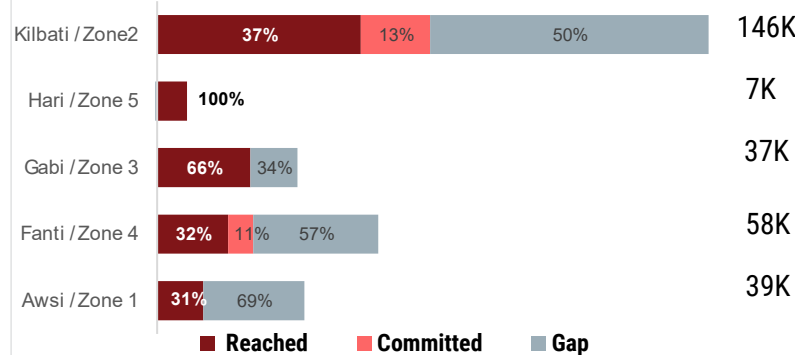
Emergency Shelter/ Repair Assistance



Gap Analysis Per Zone

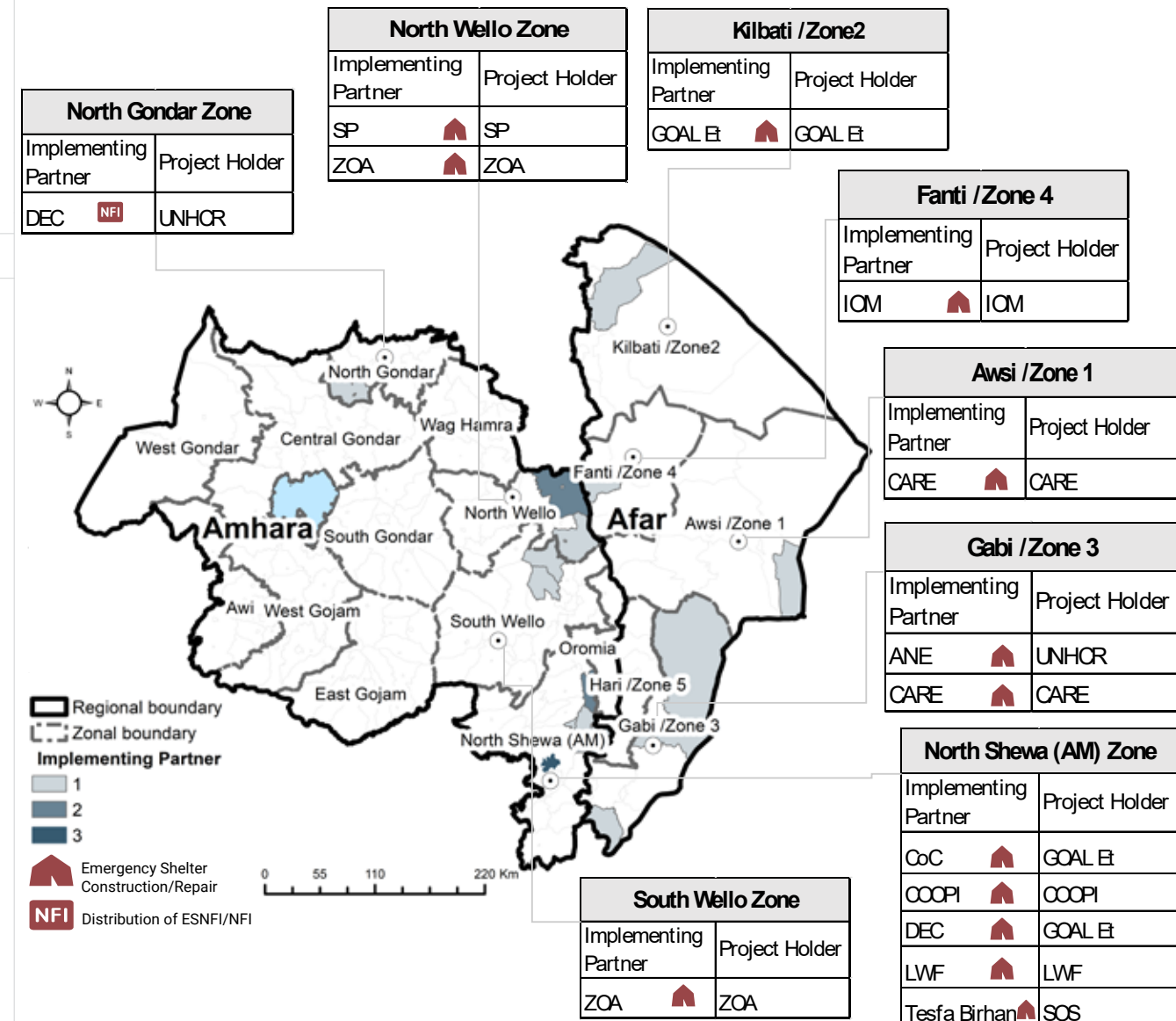


Afar-Gap Analysis



Monthly Operational Presence of Organizations

Note: The presence map shows presence of partners during the reporting month



Implementing Partners

Donors

