

Humanitarian Crisis Overview

Throughout May 2025, Tigray continues to face a worsening displacement crisis, with over 760,000 IDPs residing in overcrowded, inadequate, and unsafe shelters. Conditions are especially dire in 20 high-risk collective centers and informal sites, where over 19,000 households live in makeshift or structurally compromised shelters offering minimal protection. Recent joint Shelter and CCCM Cluster assessments revealed that 87% of shelters in prioritized sites are damaged, with many at risk of collapse. Sites in Shire host thousands in overused public buildings and classrooms, far exceeding capacity.

While no major new displacement reported in Amhara during May, the humanitarian situation remains challenging with stacked caseloads. IDPs in North Wello, South Wello, and North Shewa suffer from deteriorating shelter conditions and NFI struggles, with longer term solutions hindered by difficult prospects of coordinated return and non-existent livelihood options. Repeatedly prioritized by the Cluster, site locations in these woredas fail to see ramped up resource support. Nevertheless, available IOM stocks and committed partners have fruited certain critical assistances in implementation.

The response capacity of shelter partners in Tigray, Amhara, and Contested Area is being critically undermined by declining funding, which has forced organizations to scale back or suspend interventions and programs. With the rainy season approaching, the lack of shelter support and poor living conditions pose immediate risks of overflowing, displacement, and physical harm. ES/NFI Cluster urgently calls for donor support for emergency shelter and NFI assistance and pipeline support, coupled with considerations over hazard mitigation and community-led preparedness.

Response Progress as of May 2025

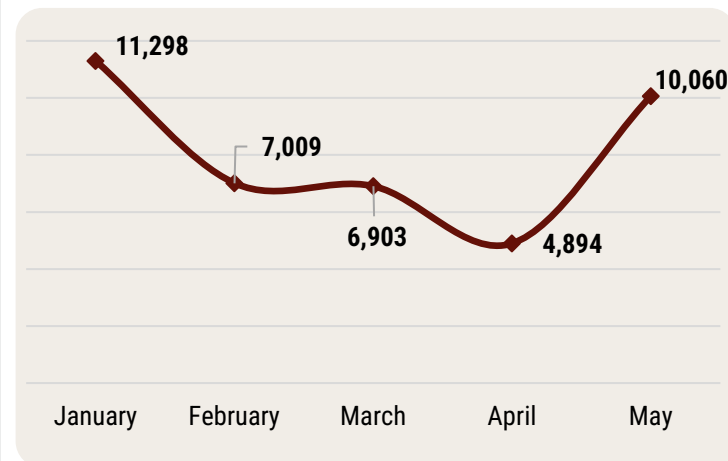
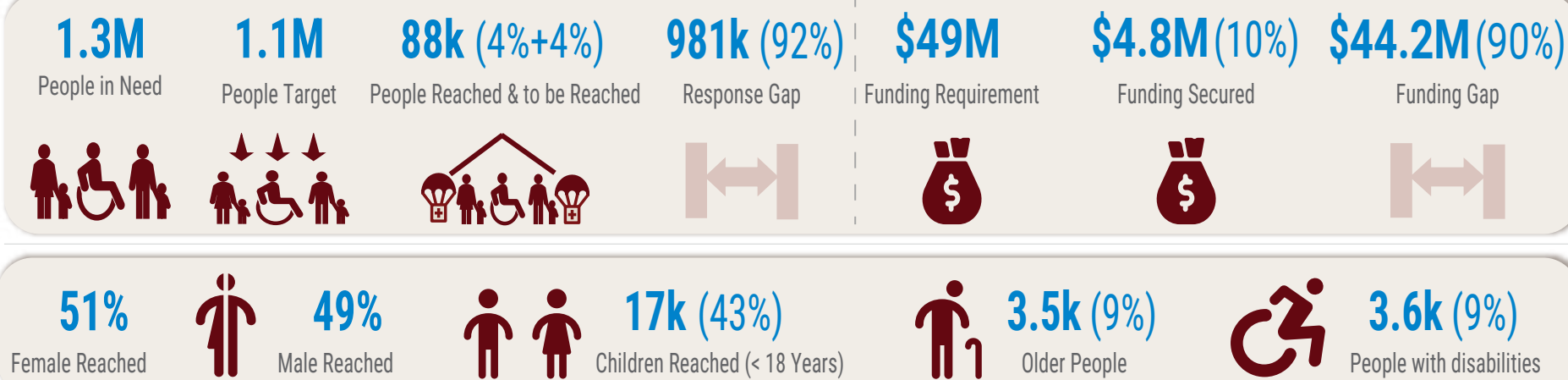
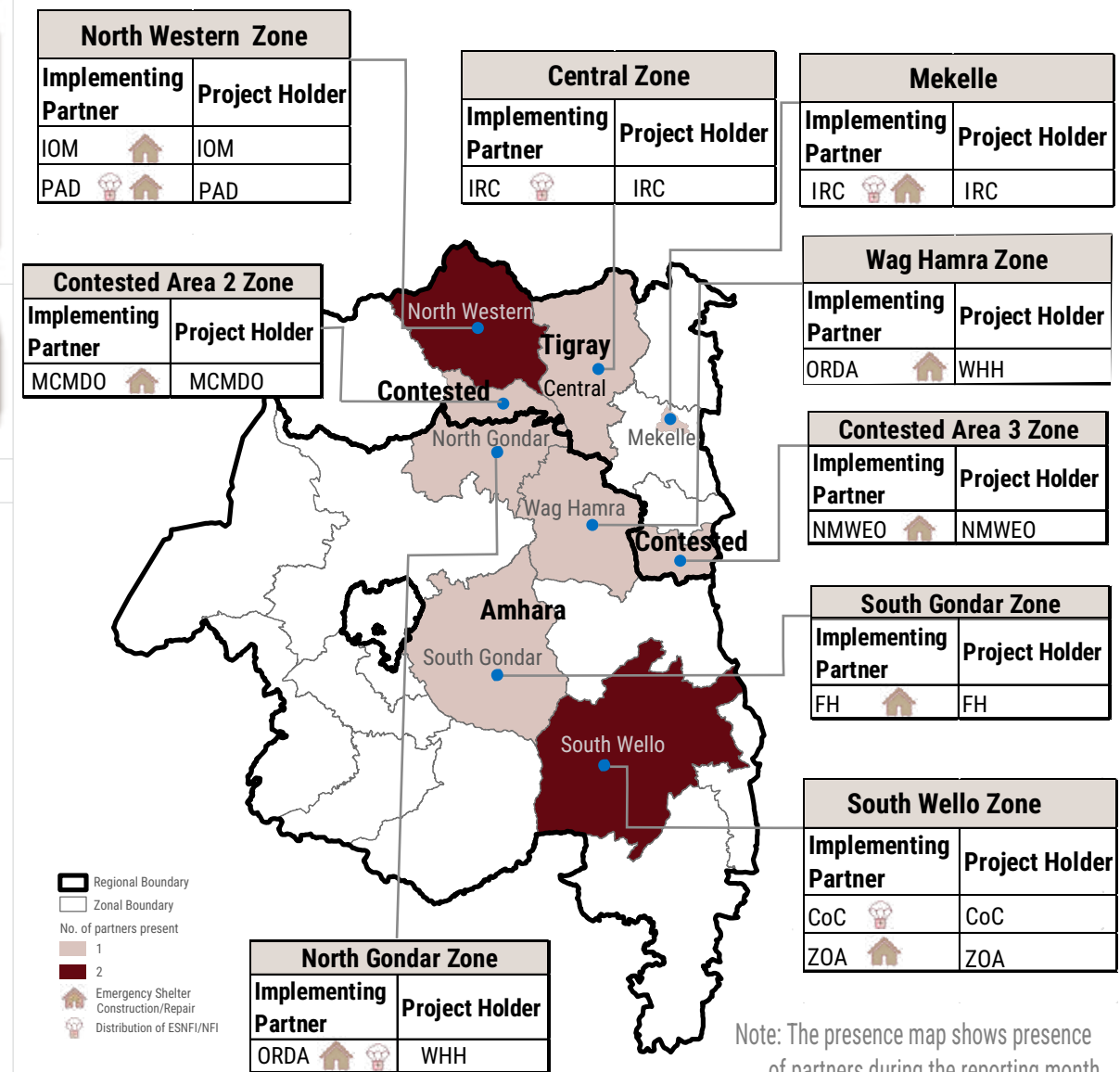


Photo credit ES/NFI Cluster: Shelter situations in Amhara Region- Gerba Degan, Kalu

Key Figures

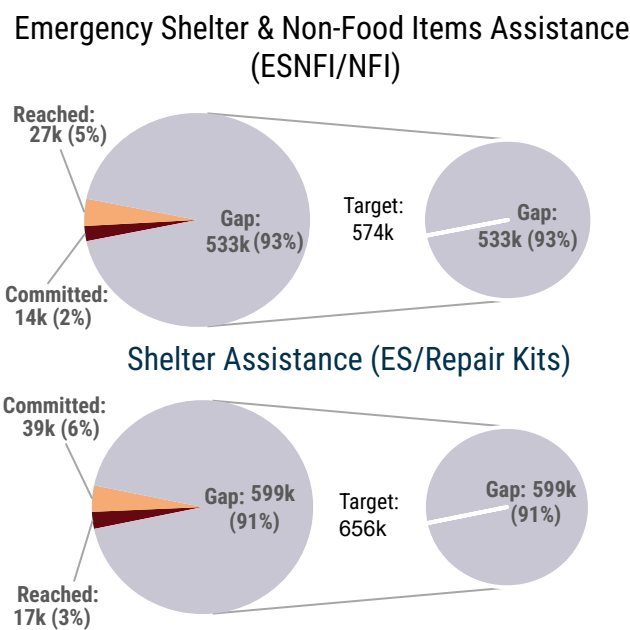


Monthly Operational Presence of Organizations

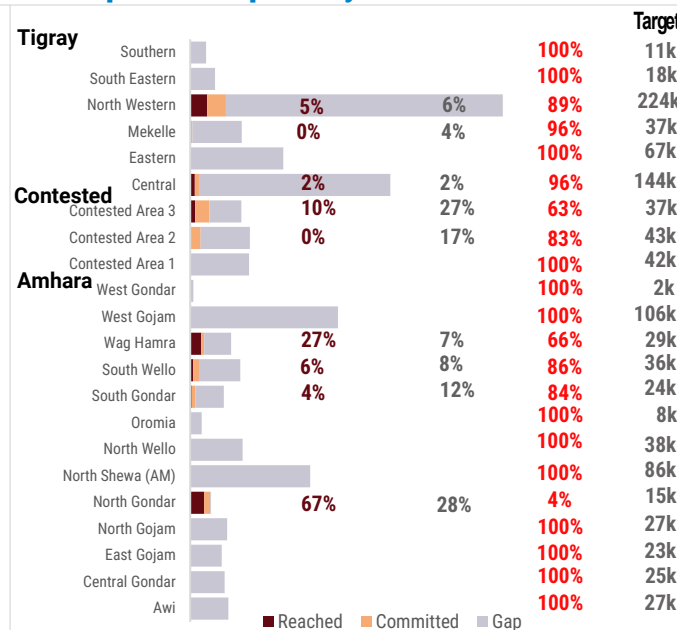


Note: The presence map shows presence of partners during the reporting month

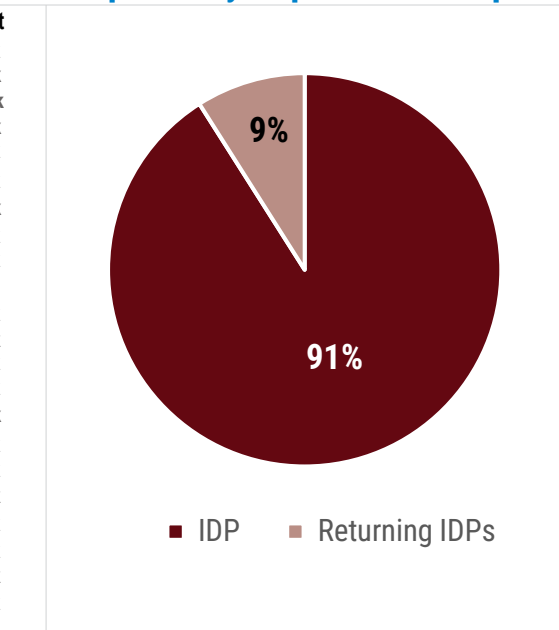
Response by Activity



Response-Gap Analysis Per Zone



Response by Population Group



Donors



Implementing Partners

