

Overview

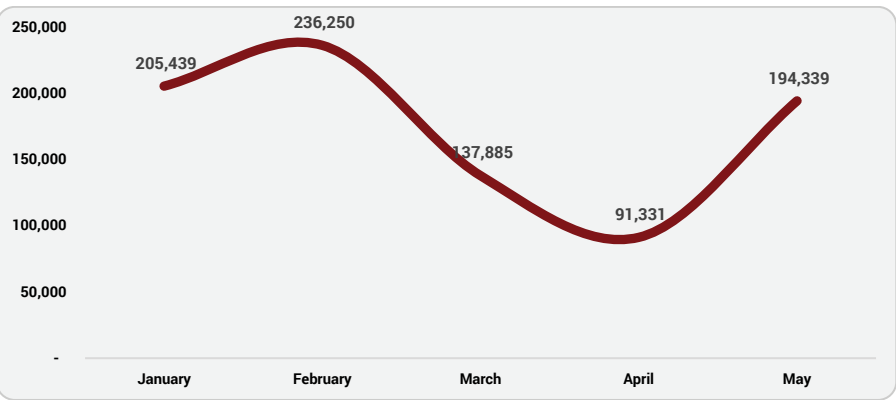
As of 31 May 2023, the cluster has reached, through completed activities, **22%** (865K) of its 3.9M targeted population plus **8%** (296K) committed through ongoing activities and items in stock, leaving a gap of **70%** (2.7M) more to reach for the remaining seven months of the year. The numbers and percentages reached and committed were made possible through secured funding, which is **28%** (USD 40.1M) of the required USD 144.2M, leaving a funding gap of **72%** (USD 104.1M).

The top 5 donors who contributed to the secured funding are EHF, BHA, ICRC, Japan, and CERF. By activity, NFI activities, in kind and in cash, account for the most significant proportion (**48%**) of the reached population, while Emergency Shelter has the most significant gap yet to fill. By region, Tigray has the highest proportion of people reached (**42%**), but only **2%** committed indicates low ongoing activities and no ESNFI items in stock. Oromia remains the region with the lowest (**4%**) population reached. The gaps against the targets per region remain high, ranging from **56%** for Tigray to **88%** for Oromia.

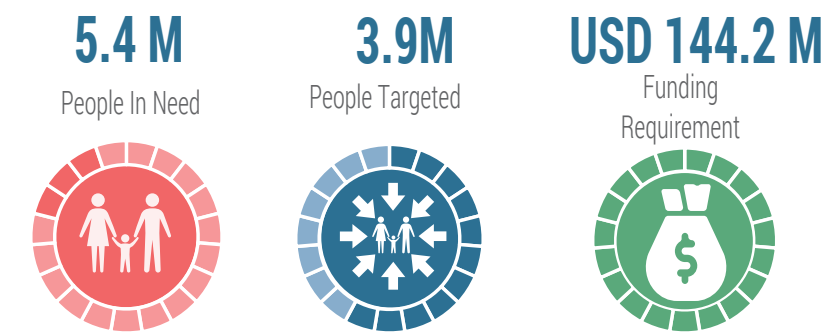
By population group, IDPs across the range of settlements and crisis types account for **74%** of the reached, followed by returnees at **20%**. A small proportion (**6%**) of the reached are affected, non-displaced people.

Cumulatively, from Jan to May, the achievements and gaps of the cluster's response are based on reports submitted by 39 implementing partners consisting of 13 national NGOs, 10 international NGOs, and 2 UN agencies. The implementing partners reporting the top 5 proportions of reached populations through completed activities are DEC, IOM, ICRC, ANE, DPO-ET, & SCI. However, for the month of May, only 22 partners reported. Similarly, the number of people reached, cumulatively, has increased over the first five months of 2023 but taken month by month, there is a linear decrease in the number of people reached through completed activities coupled as ongoing activities except for the month of May where the response is increased by **113%** compared to April.

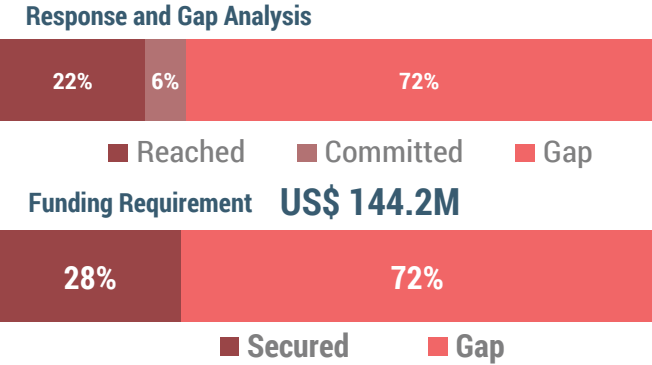
Response trend



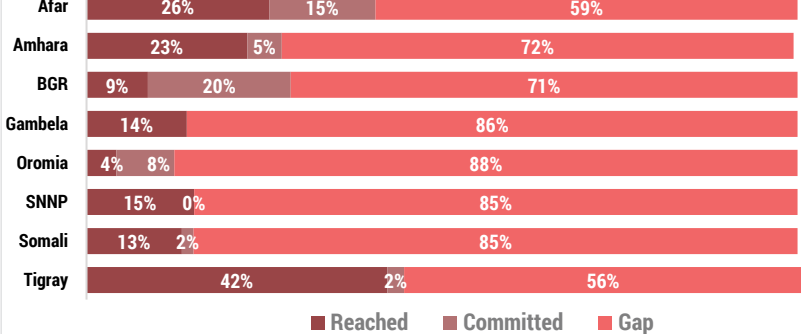
Key Figures



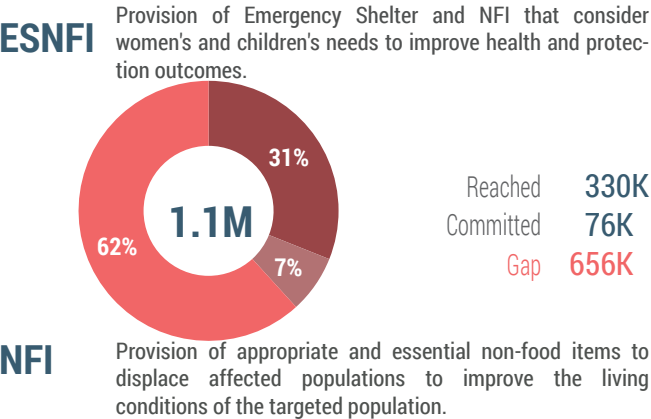
Response and Funding Gap Analysis



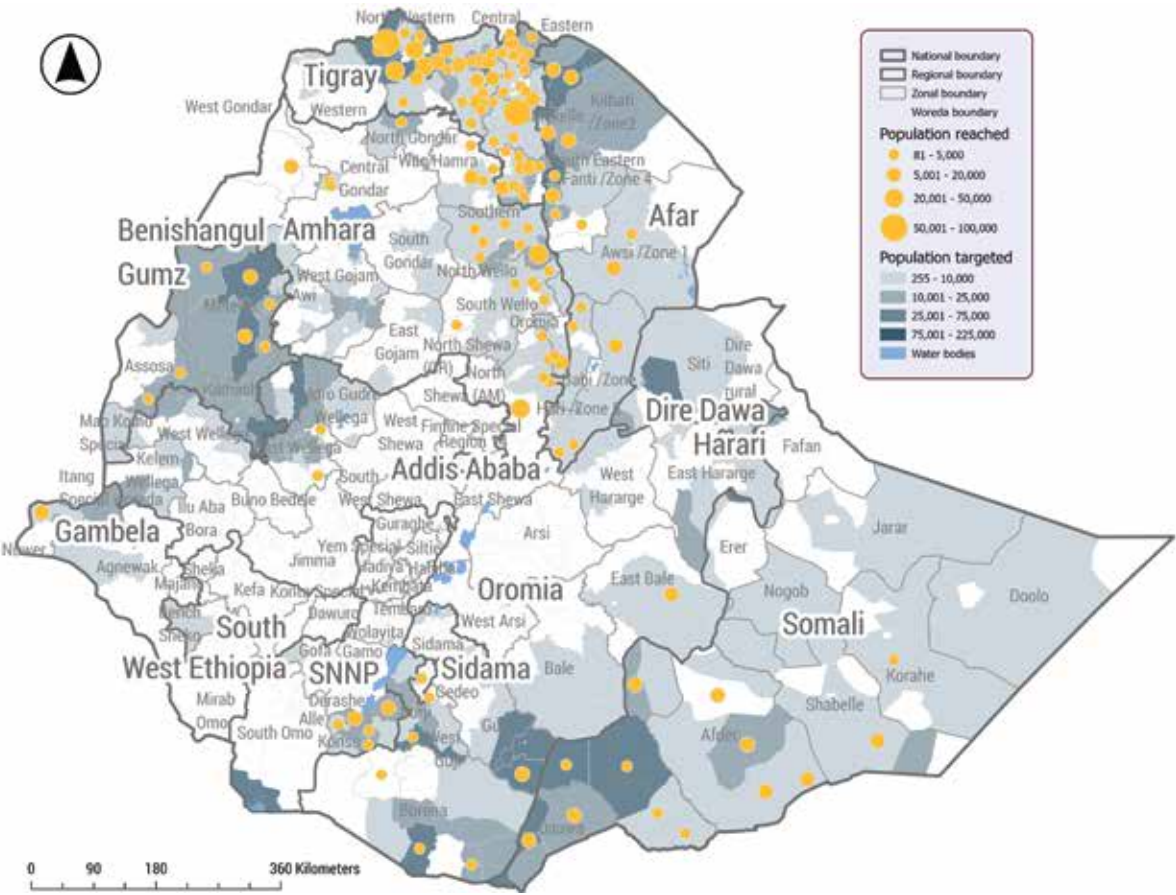
Gap Analysis By Region



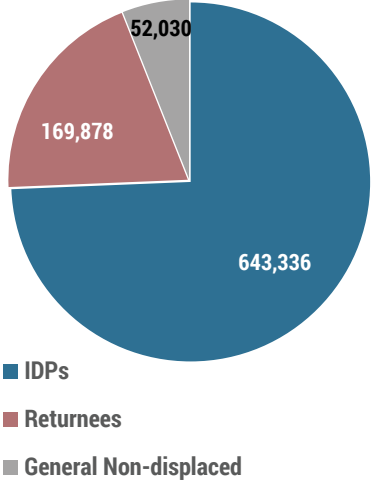
Response By Activity



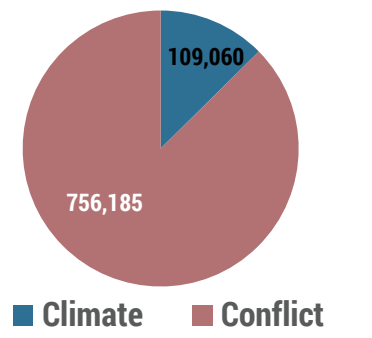
People Targeted And Reached By Woreda



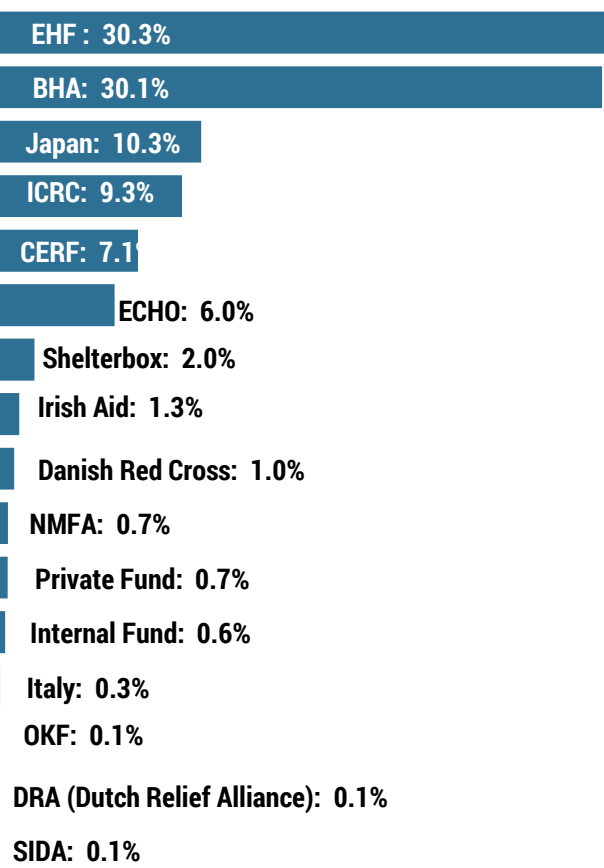
Response By Population Group



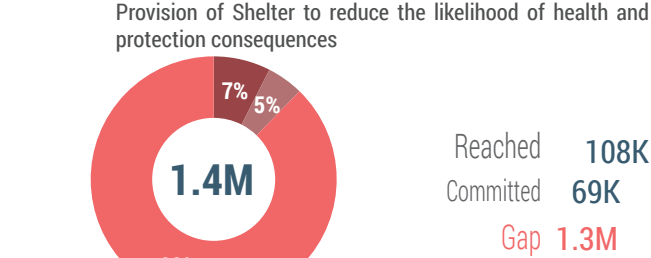
Response by Emergency Type



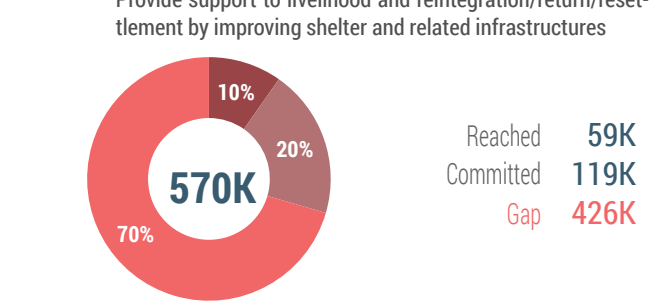
Top Contributing Donors



Emergency Shelter



Shelter Repair



Implementing Partners



Donors

