

## Overview

Based on recent monitoring visits to returnee areas in Kilbai Zone, returnees still live in a precarious shelter situation in makeshift shelters and others stay with relatives, some issues of housing, land, and property (HLP) concerns prevail in Abala Woreda, and the impact of food suspension has further execrated the vulnerabilities of the communities in the Region, particularly women, child-headed households, persons with disabilities and the elderly. Response to the ES/NFI needs of returnees in Kilbati/Zone 2 and Fanti/Zone 4 and flood-induced displacements in Gabi/Zone 3 remains a top priority for the ES/NFI Cluster.

While ES/NFI interventions are ongoing in the region, there remain unmet ES/NFI needs of thousands of conflicts and flood-affected populations in Zone 2, Zone 4, and Zone 3 due to scarcity of resources.

Access to parts of Berhale and the Road connecting Abala and Megale Woredas remains challenging due to security concerns. So far, the cluster has reached 108K, (38%) conflict and flood-affected people in 2023, leaving a gap of 147K (51%) people.

In Amhara, the political situation has stabilized after a state of emergency had been declared in the first weeks of August due to fighting between government security forces and the UAG. However, the Region's humanitarian response, including ESNFI, remains minimal due to limited funding and access to some IDP sites.

## Overall Response and Gap Analysis

### Amhara Funding-Gap Analysis



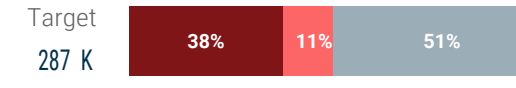
### Amhara Response-Gap Analysis



### Afar Funding-Gap Analysis



### Afar Response-Gap Analysis



Funding Secured Funding Gap

Reached Committed Gap



Beneficiaries in Guben Kebele, Berhale Woreda, Afar Region

## Key Figures



## Response By Activity

### ESNFI/NFI Assistance



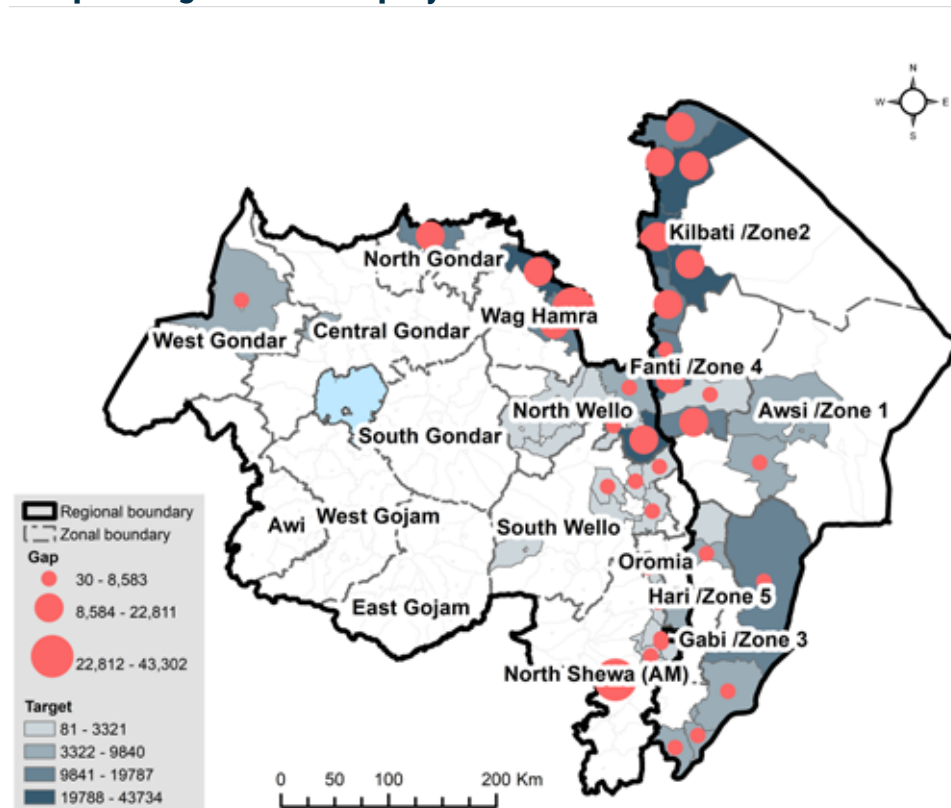
### Emergency Shelter/ Repair Assistance



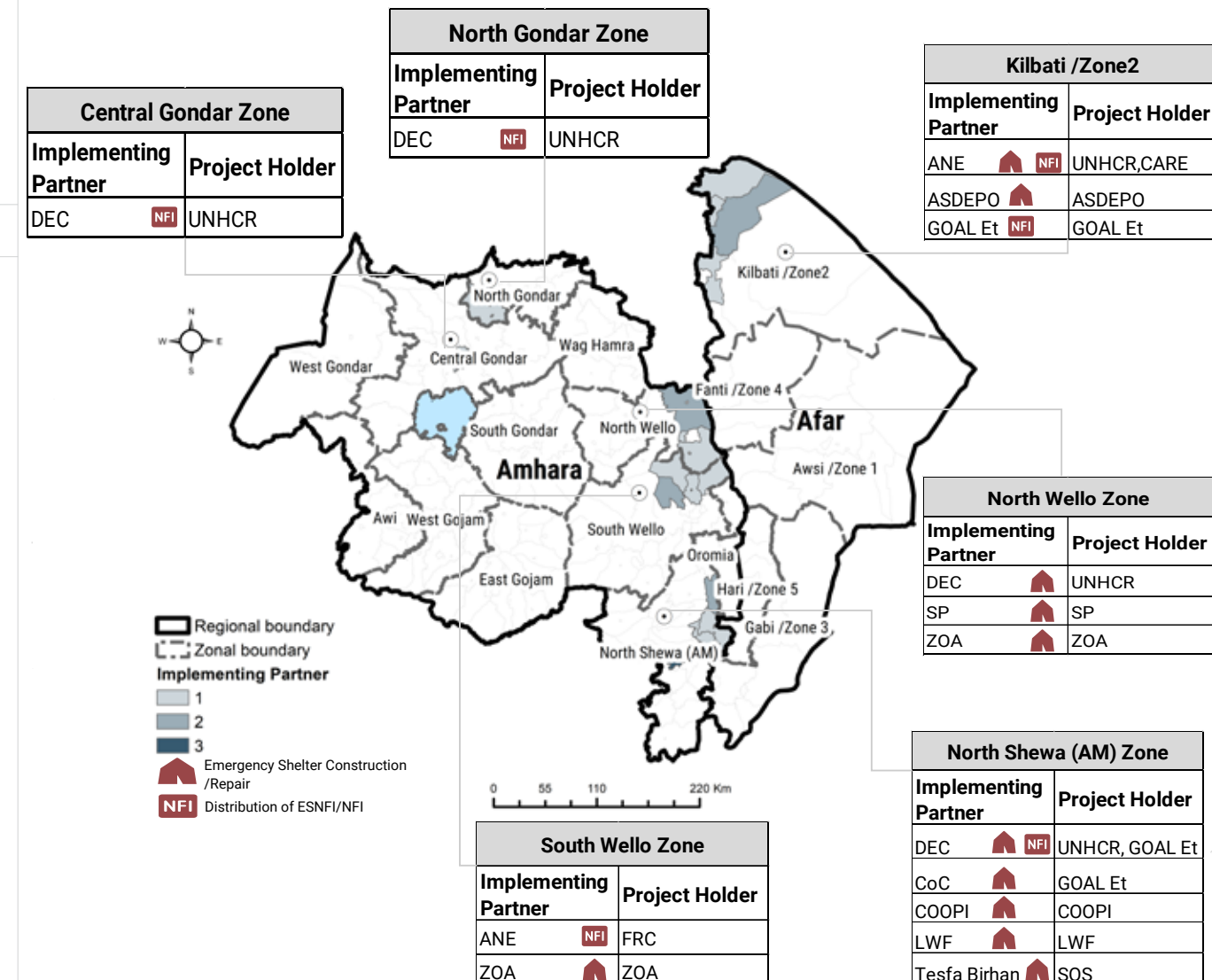
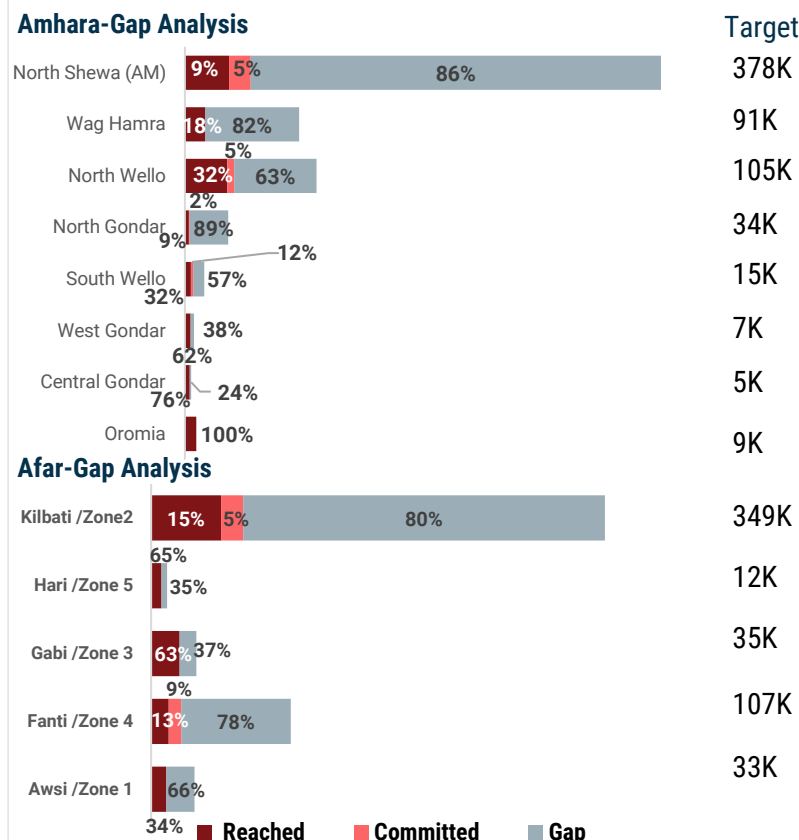
## Monthly Operational Presence of Organizations

Note: The presence map shows presence of partners during the reporting month

## People Targeted And Gap By Woreda



## Gap Analysis Per Zone



## Implementing Partners

## Donors