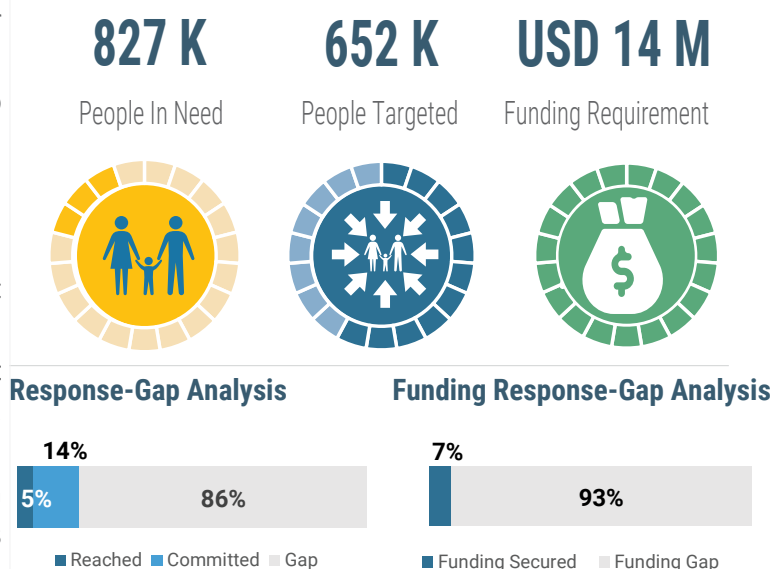


## Overview

The Somali region is in its Jilal season, which is very dry as the Deyr seasonal rainfall failed. Movement of communities has already been observed, and this may increase, leading to more pastoralists traveling to nearby villages in search of relief aid. IDPs displaced due to drought are still at the displacement sites and with dire need for emergency shelters and non-food items.

In the Somali region, some of the locations have been affected by drought and conflict, especially in the Afder zone of the Somali region, where critical humanitarian needs have been reported from a recent assessment conducted in the locations where access has improved since late January. In the Oromia region, the absence of five consecutive seasonal rainfall resulted in prolonged drought, and the poor performance of the Hagayya 2022 season deteriorated the situation. Limited resources and partners remain the challenge for the drought response in all drought-affected areas.

## Key Figures and Response-Gap Analysis



Response-Gap Analysis

14%

5%

86%

Reached

Committed

Gap

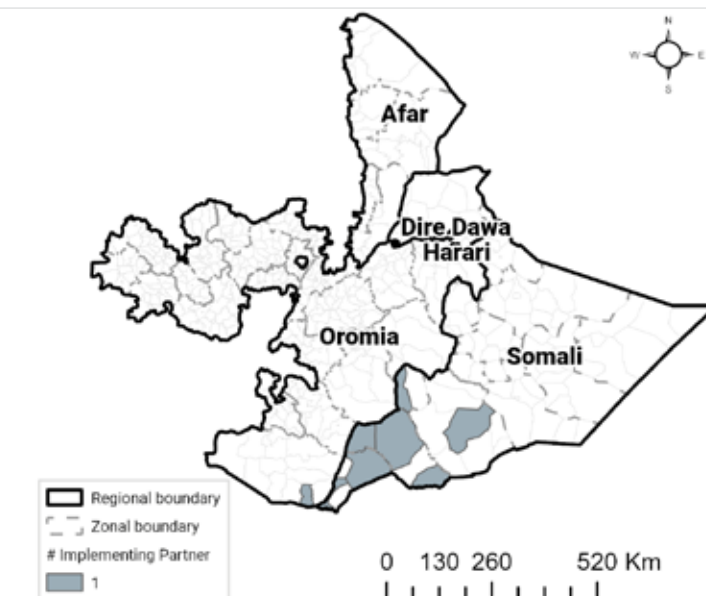
Funding Response-Gap Analysis

7%

93%

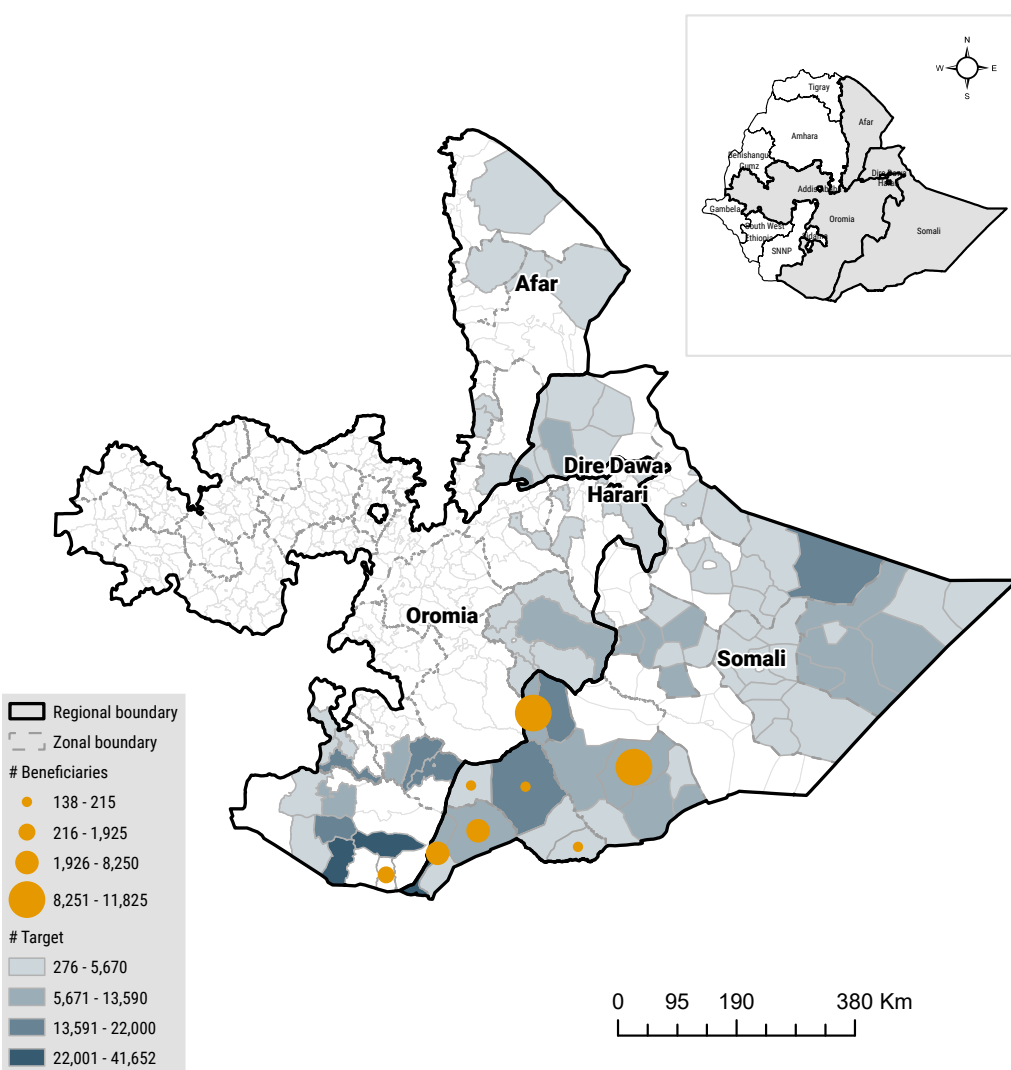
Funding Secured

Funding Gap

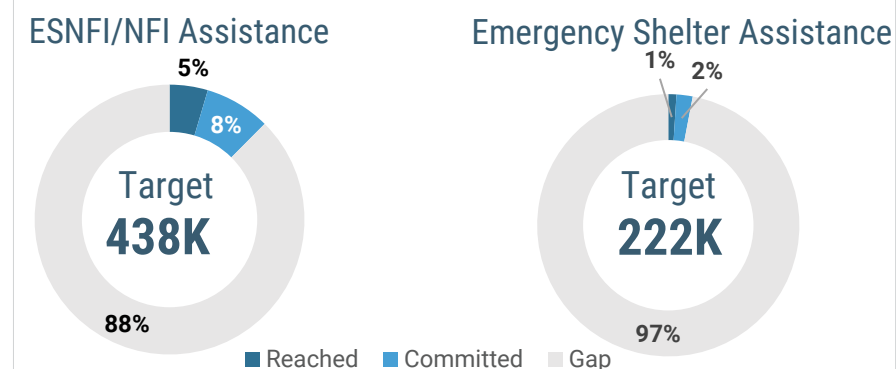


OCHA Tandiwe, Elkare Woreda, Afder Zone, Somali region

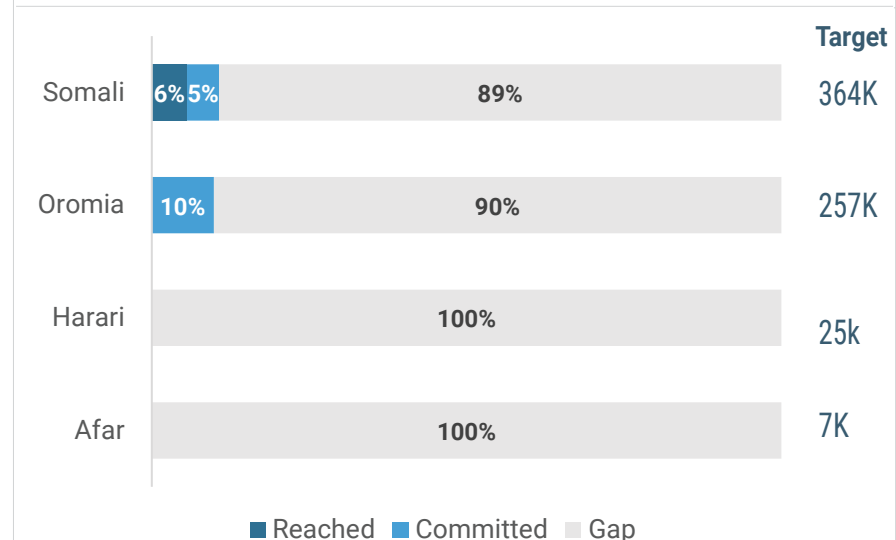
## People Targeted And Reached By Woreda



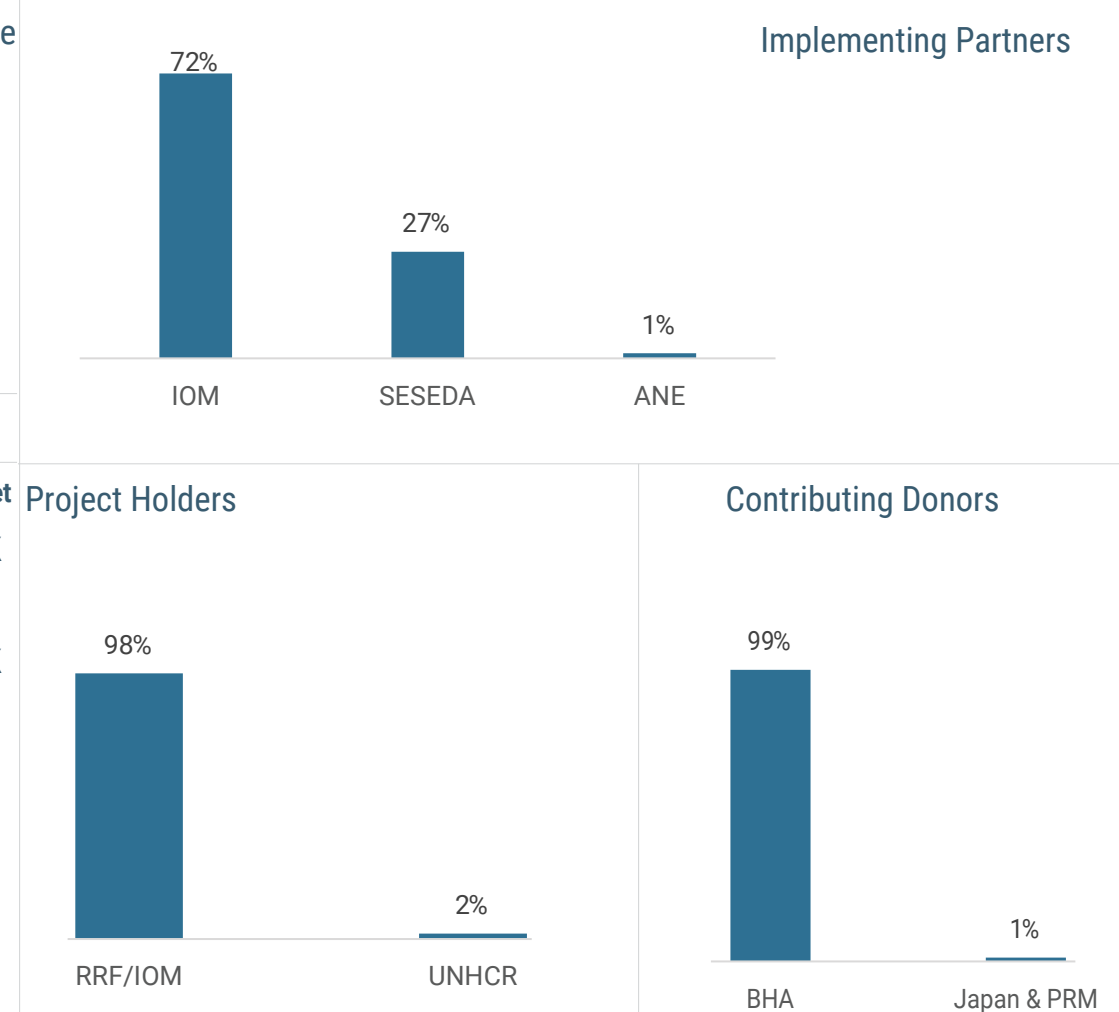
## Response and Gap Analysis Per Activity



## Response-Gap Analysis Per Region



## Contributing Donors and Implementing Partners



## Donors

## Implementing Partners

