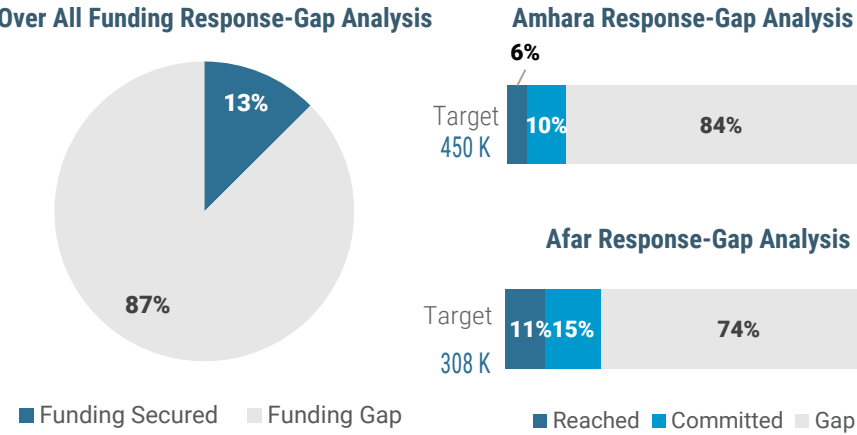


Overview

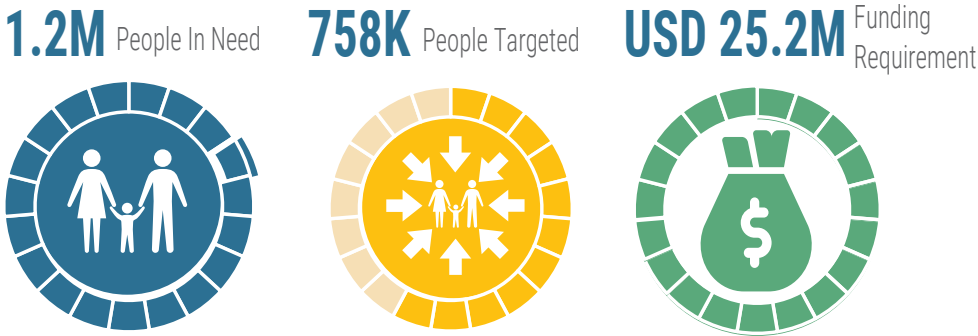
In Afar, IDPs continue to vacate the informal IDP sites, spontaneously returning to their places of origin where security and access situations have improved. The two informal IDP sites of Bereyera in Berhale Woreda and Dirma in Megale Woreda of Kilbati Zone host 23,441 individuals who have expressed the desire to return to their areas of origin. However, some of these areas remain inaccessible due to security concerns. Local authorities and UNOCHA report that the number of spontaneous returnees in Kilbati Zone has reached 461,866, Fanti Zone, 172,222, Awsi Zone, 93747 and in Hari Zone 139,933. These returnees displaced by the Northern Ethiopia conflict multiple times, the Afar-Isaa conflict, floods, and droughts require shelter support and essential non-food items as their houses were vandalized or looted during displacements. All returning IDPs require urgent shelter and NFI support upon arrival at their final destinations. Still, due to a lack of resources, the ES/NFI cluster has not been able to swiftly respond to such needs since the commencement of assistive returns. As a result, over 4000 more individuals await support to return to Kilbati Zone. Access to parts of Berhale, Megale, Kunneba, and Dalol Woredas remains challenging due to security concerns.

In Amhara, conflict-driven displacement continues to grow in the region, leading to additional emerging humanitarian needs in several locations, particularly in the eastern part, where thousands of IDPs are arriving from the Oromia region and joining already congested collective centers in South Wello and North Shewa Zone. In response to the increased number of newly displaced persons, two collective centers have recently been reopened to provide emergency shelter solutions for new arrivals and existing IDPs living in substandard conditions. Meanwhile, new displacement trends have been reported in Wag Hemra Zone, where over 5529 IDPs have been displaced from inaccessible locations in Abregelle and Tsagebeje woredas due to a lack of food and services. While most new arrivals have joined the recently reopened IDP sites, hundreds are forced to sleep in open spaces without proper protection and living space.

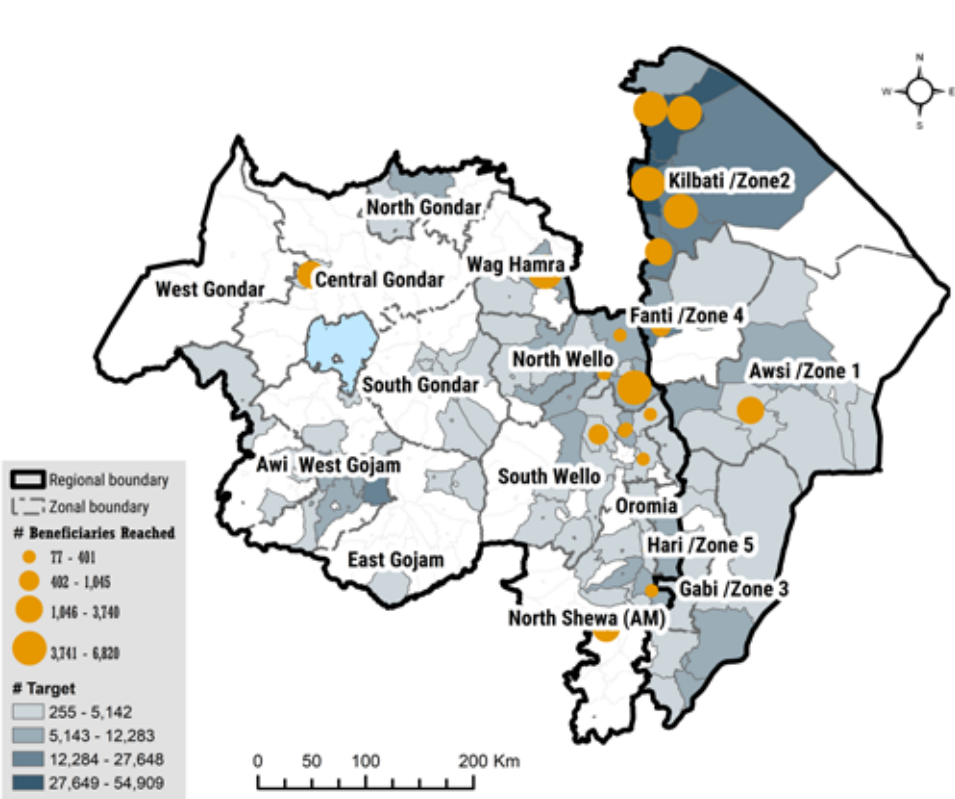
Overall Response and Gap Analysis



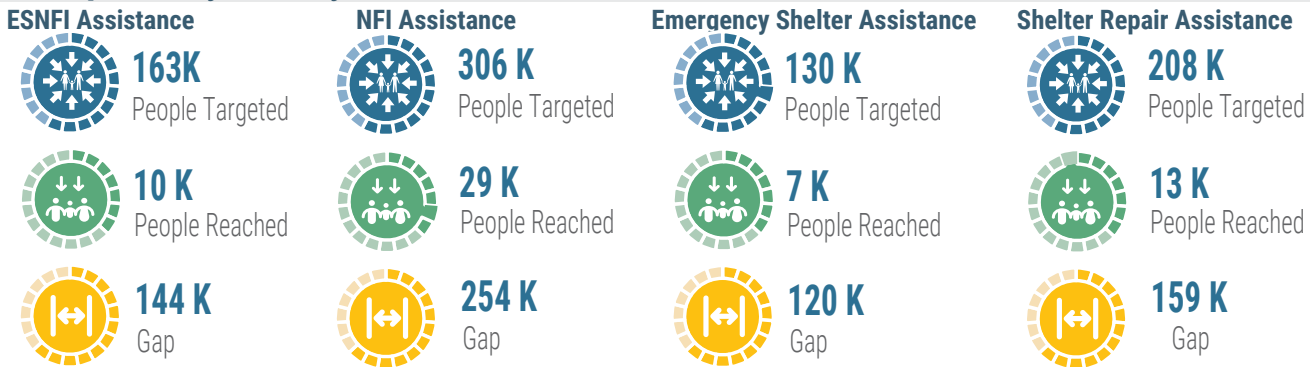
Key Figures



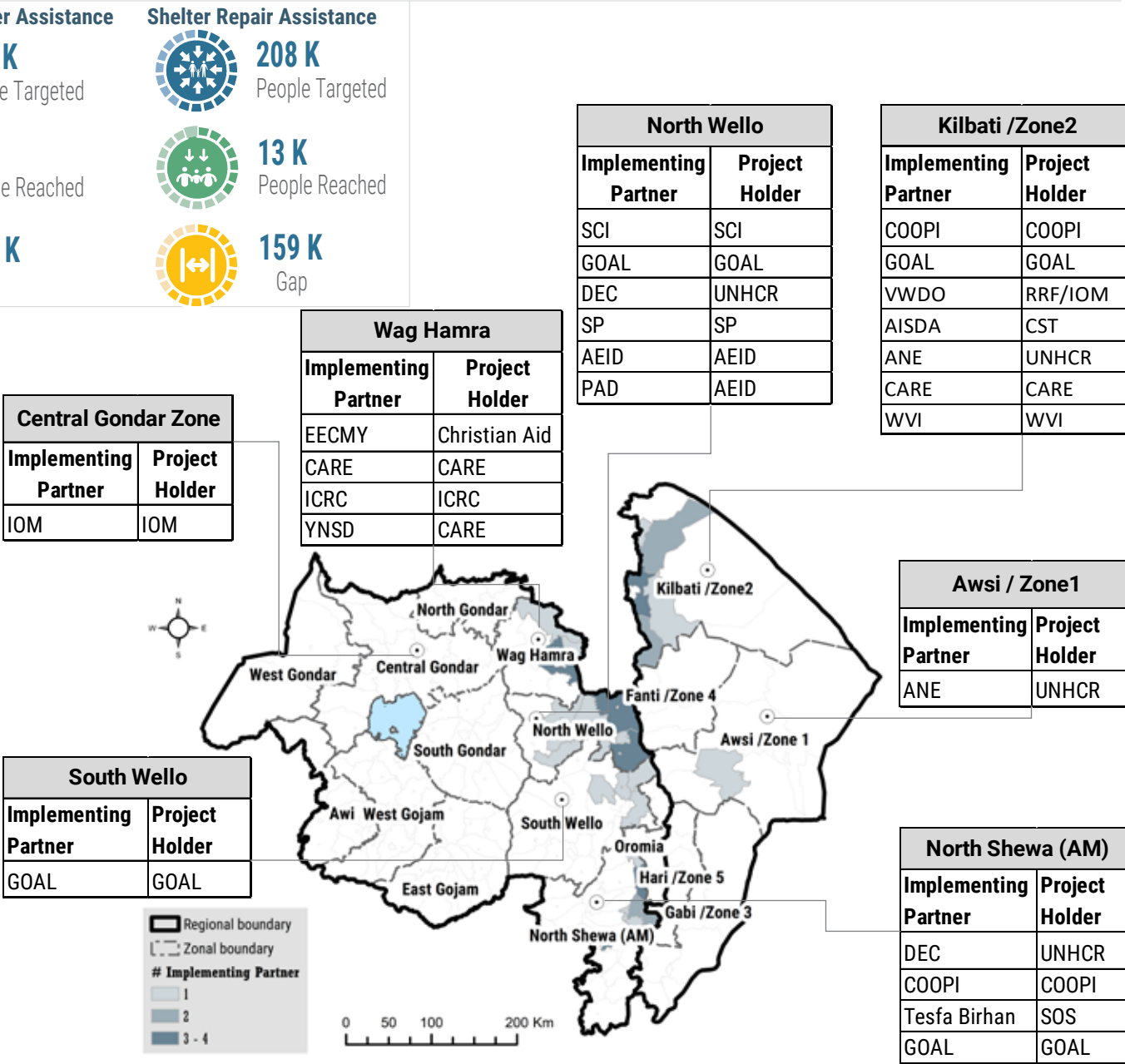
People Targeted And Reached By Woreda



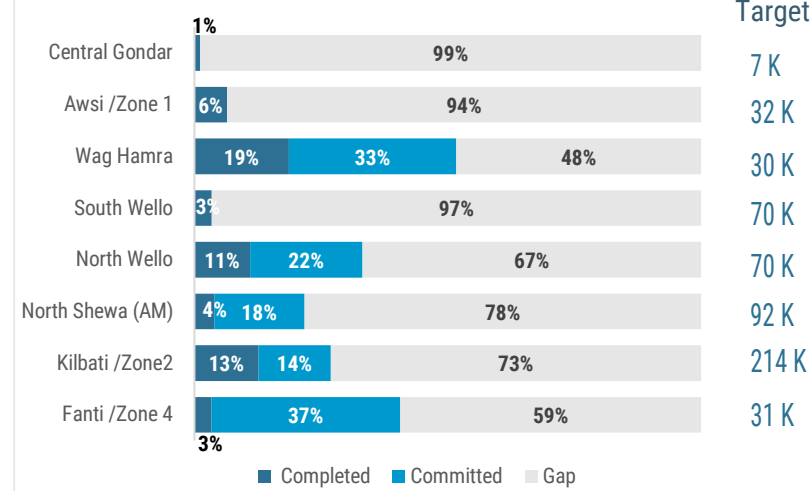
Response By Activity



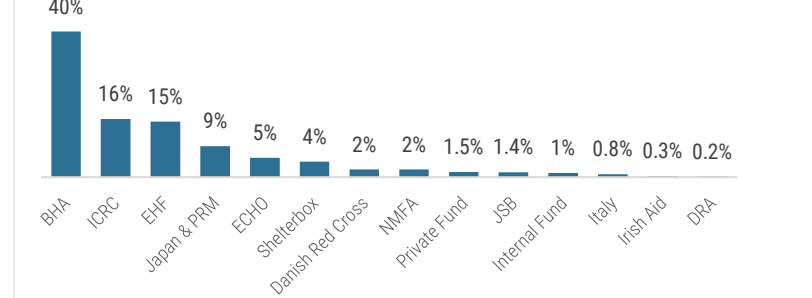
Partners Presence Map



Gap Analysis Per Zone



Top Contributing Donors



Implementing Partners



Donors

